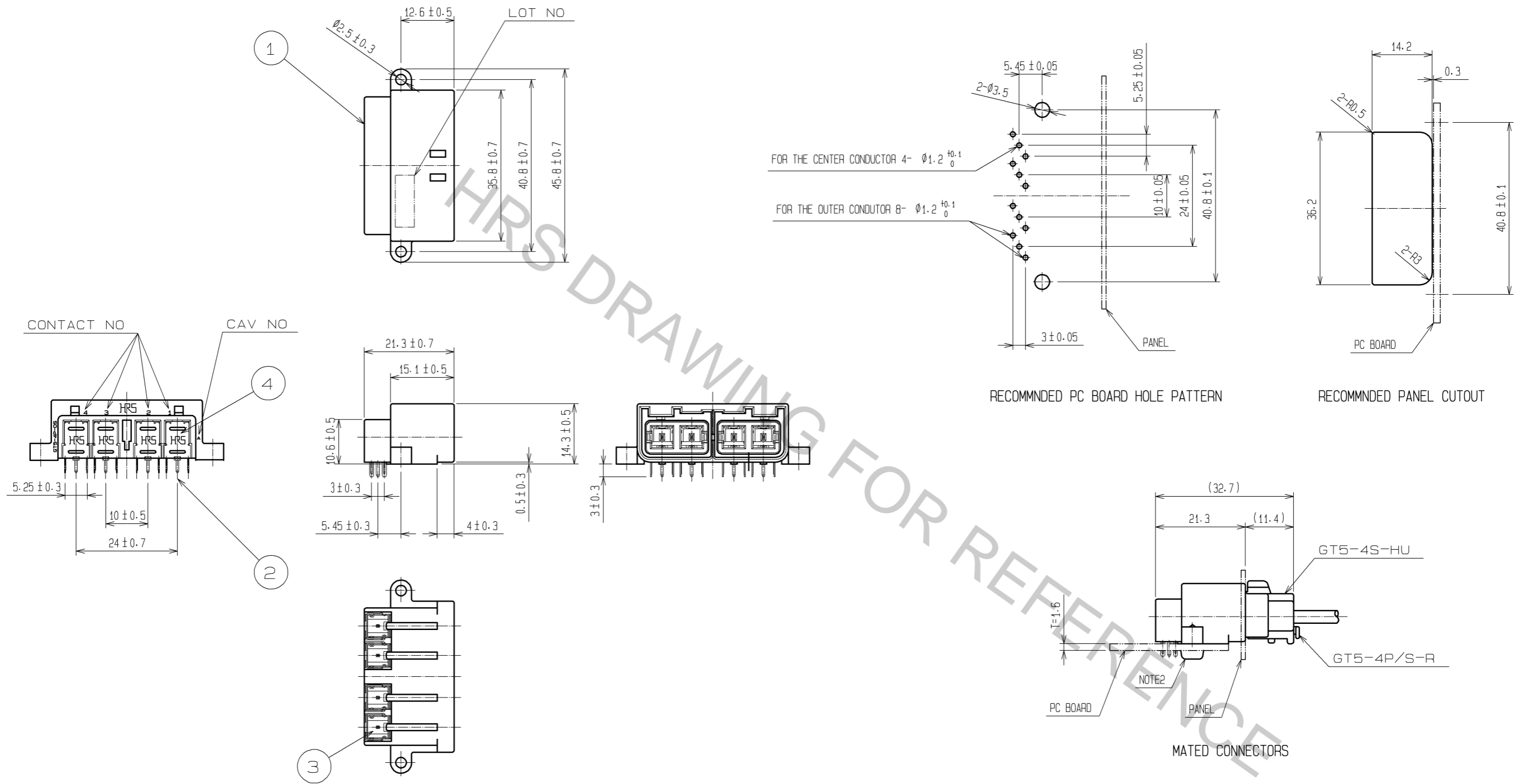


ELV. RoHS COMPLIANT



NOTE1. DEPENDING ON THE CIRCUMSTANCES RECESS OF WELDING SHALL BE ADDED TO MOLD TO PREVENT SINKAGE.
 2. FIXING SCREW SHALL BE NOMINAL DIAMETER 3mm IN ACCORDANCE WITH CLASS 1 OR 4 OF JISB1115, 1122.
 3. APPLICABLE CONNECTOR: GT5-4S-HU (CL755-0056-0)

2	BRASS	TIN PLATED	4	PHOSPHOR BRONZE	TIN PLATED
1	PBT	UL94HB, LIGHT GRAY	3	PBT	UL94V-0, DARK GRAY
NO.	MATERIAL	FINISH, REMARKS	NO.	MATERIAL	FINISH, REMARKS
UNITS mm		SCALE 1:1	COUNT 	DESCRIPTION OF REVISIONS	
HRS HIROSE ELECTRIC CO., LTD.		APPROVED: KS. SATOH	08.06.11	DRAWING NO. EDC3-165614-01	
		CHECKED: NH. NAKATA	08.06.10	PART NO. GT5-4P-DS(70)	
		DESIGNED: MO. OKADA	08.06.09	CODE NO. CL755-0087-4-70	
		DRAWN: MH. SHOUJI	08.05.22	DATE	