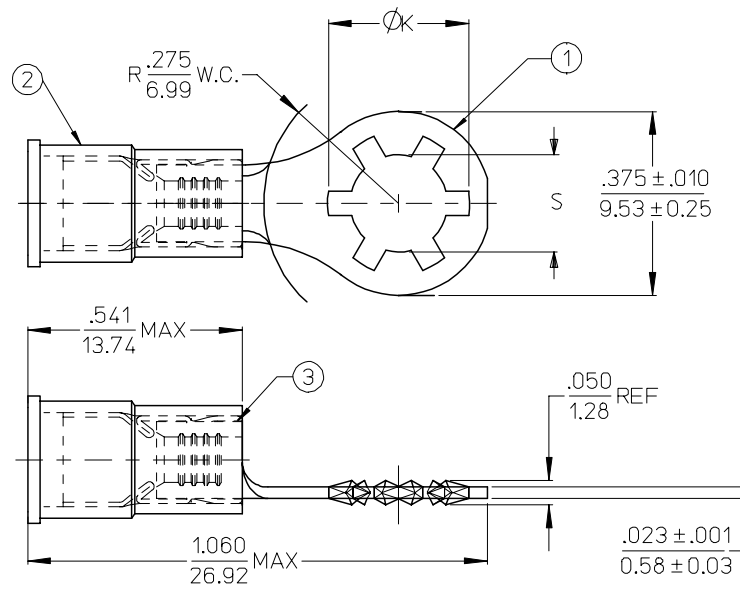


| MATERIAL NUMBER | ENGINEERING NUMBER | S ±.007/.178 | K REF | MATERIAL |
|-----------------|--------------------|-----------------|-----------|----------|
| 190760001 | SRA-529-06 | .146/3.71 | .236/5.99 | BRASS |
| 190760003 | SRA-529-08 | .173/4.40 | .263/6.68 | BRASS |
| 190760005 | SRA-529-10 | .198/5.03 | .288/7.32 | BRASS |
| 190760013 | SRB-529-06 | .146/3.71 | .236/5.99 | BRASS |
| 190760015 | SRB-529-08 | .173/4.40 | .263/6.68 | BRASS |
| 190760017 | SRB-529-10 | .198/5.03 | .288/7.32 | BRASS |
| 190760007 | SRA-S-529-06 | .146/3.71 | .236/5.99 | STEEL |
| 190760009 | SRA-S-529-08 | .173/4.40 | .263/6.68 | STEEL |
| 190760011 | SRA-S-529-10 | .198/5.03 | .288/7.32 | STEEL |
| 190760019 | SRB-S-529-06 | .146/3.71 | .236/5.99 | STEEL |
| 190760021 | SRB-S-529-08 | .173/4.40 | .263/6.68 | STEEL |
| 190760023 | SRB-S-529-10 | .198/5.03 | .288/7.32 | STEEL |



SALES DRAWING

| ITEM | QTY | DESCRIPTION | MATERIAL | FINISH |
|------|-----|-----------------------|-----------|-------------|
| 3 | 1 | FERRULE PLATED | BRASS | TIN PLATING |
| 2 | 1 | RED 600V AVIK MLD INS | NYLON | RED |
| 1 | 1 | STAR RING KRIMPTITE | SEE CHART | TIN PLATING |

NOTES:
 1. MATERIAL: SEE CHART
 2. FINISH: SEE CHART
 3. ALL COMPONENTS OF THIS ASSEMBLY ARE RoHS COMPLIANT

| REVISED / REDRAWN EC NO: ETC2006-0323 DRWN:ASAYDEH 2006/03/15 CHKD:RDEROSS 2006/03/22 APPR:RDEROSS 2006/03/27 | QUALITY SYMBOLS | GENERAL TOLERANCES (UNLESS SPECIFIED) | DIMENSION STYLE | SCALE | DESIGN UNITS | THIRD ANGLE PROJECTION | | | | | | | | | | | | | | | | | | | |
|---|--|--|-----------------|--------------------|--------------|------------------------|-------|-------|----------|-------|-------|----------|--------|------|---------|--------|-------|--|----|------|-------|--|-----|------|--|
| | $\nabla=0$ $\nabla=0$ | <table border="1"> <thead> <tr> <th></th> <th>mm</th> <th>INCH</th> </tr> </thead> <tbody> <tr> <td>4 PLACES</td> <td>± ---</td> <td>± ---</td> </tr> <tr> <td>3 PLACES</td> <td>± ---</td> <td>±.005</td> </tr> <tr> <td>2 PLACES</td> <td>± 0.13</td> <td>±.01</td> </tr> <tr> <td>1 PLACE</td> <td>± 0.25</td> <td>± ---</td> </tr> </tbody> </table> | | mm | INCH | 4 PLACES | ± --- | ± --- | 3 PLACES | ± --- | ±.005 | 2 PLACES | ± 0.13 | ±.01 | 1 PLACE | ± 0.25 | ± --- | <table border="1"> <thead> <tr> <th>mm</th> <th>INCH</th> </tr> </thead> <tbody> <tr> <td>IN/MM</td> <td></td> </tr> </tbody> </table> | mm | INCH | IN/MM | | 4:1 | INCH | |
| | | mm | INCH | | | | | | | | | | | | | | | | | | | | | | |
| | 4 PLACES | ± --- | ± --- | | | | | | | | | | | | | | | | | | | | | | |
| 3 PLACES | ± --- | ±.005 | | | | | | | | | | | | | | | | | | | | | | | |
| 2 PLACES | ± 0.13 | ±.01 | | | | | | | | | | | | | | | | | | | | | | | |
| 1 PLACE | ± 0.25 | ± --- | | | | | | | | | | | | | | | | | | | | | | | |
| mm | INCH | | | | | | | | | | | | | | | | | | | | | | | | |
| IN/MM | | | | | | | | | | | | | | | | | | | | | | | | | |
| DESCRIPTION | TITLE | DRAWN BY | DATE | MOLEX INCORPORATED | | | | | | | | | | | | | | | | | | | | | |
| REV | DRAFT WHERE APPLICABLE MUST REMAIN WITHIN DIMENSIONS | CHECKED BY | DATE | MATERIAL NO. | DOCUMENT NO. | SHEET NO. | | | | | | | | | | | | | | | | | | | |

THIS DRAWING CONTAINS INFORMATION THAT IS PROPRIETARY TO MOLEX INCORPORATED AND SHOULD NOT BE USED WITHOUT WRITTEN PERMISSION