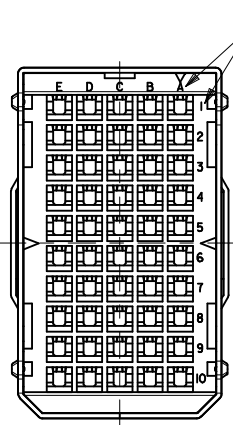
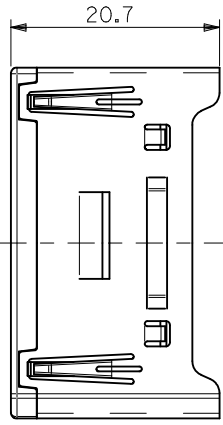
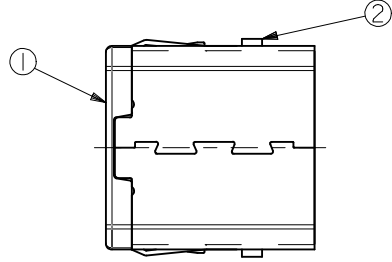


嵌合側  
MATING SIDE



電線挿入側  
WIRE SIDE



注記  
NOTES

- 材質  
MATERIAL  
①ハウジング：ガラス入りPBT樹脂  
HOUSING：PBT G.F.  
UL94V-0 色：灰  
UL94V-0 COLOR：GRAY
- ②シェル：りん青銅 t0.5  
SHELL：PHOSPHOR BRONZE t0.5
- 適用端子：56120-8\*90，56121-8\*90  
APPLICABLE CRIMP SOCKET：56120-8\*90，56121-8\*90
- 嵌合相手：51233-501\*  
MEET WITH：51233-501\*

<誤嵌合防止キー（極性）タイプ> <POLARITY KEY TYPE>

51239-5011	51239-5012	51239-5013	51239-5014	51239-5015
STANDARD TYPE	A TYPE	B TYPE	C TYPE	D TYPE

C-5	STANDARD	51239-5011	51239-***1*	50
POLARITY POSITION (CIRCUIT NO.)	POLARITY TYPE	MATERIAL NO.	MODEL NO.	CIRCUIT

REVISED EC NO: J2009-0953 DRWN: YOSHIDAM 2008/12/16 CHKD: THARUYAMA 2008/12/16 APPR: NUKITA 2008/12/16	GENERAL TOLERANCES (UNLESS SPECIFIED)		DIMENSION STYLE MM ONLY		SCALE ---	DESIGN UNITS METRIC	THIRD ANGLE PROJECTION
	10 UNDER	±0.2	DRAWN BY S. AKIYAMA	DATE '02/01/21	TITLE COMPACT ROBOT CONN. 50CKT. PLUG SOCKET HS'G ASST		
	10 OVER 30 UNDER	±0.25	CHECKED BY J. MIYAZAWA	DATE '02/02/04	MOLEX INCORPORATED		
	30 OVER	±0.3	APPROVED BY Y. ITO	DATE '02/02/04	MATERIAL NO. SEE TABLE	DOCUMENT NO. SD-51239-010	SHEET NO. 1 OF 1
ANGULAR ±3°	DRAFT WHERE APPLICABLE MUST REMAIN WITHIN DIMENSIONS		THIS DRAWING CONTAINS INFORMATION THAT IS PROPRIETARY TO MOLEX INCORPORATED AND SHOULD NOT BE USED WITHOUT WRITTEN PERMISSION				