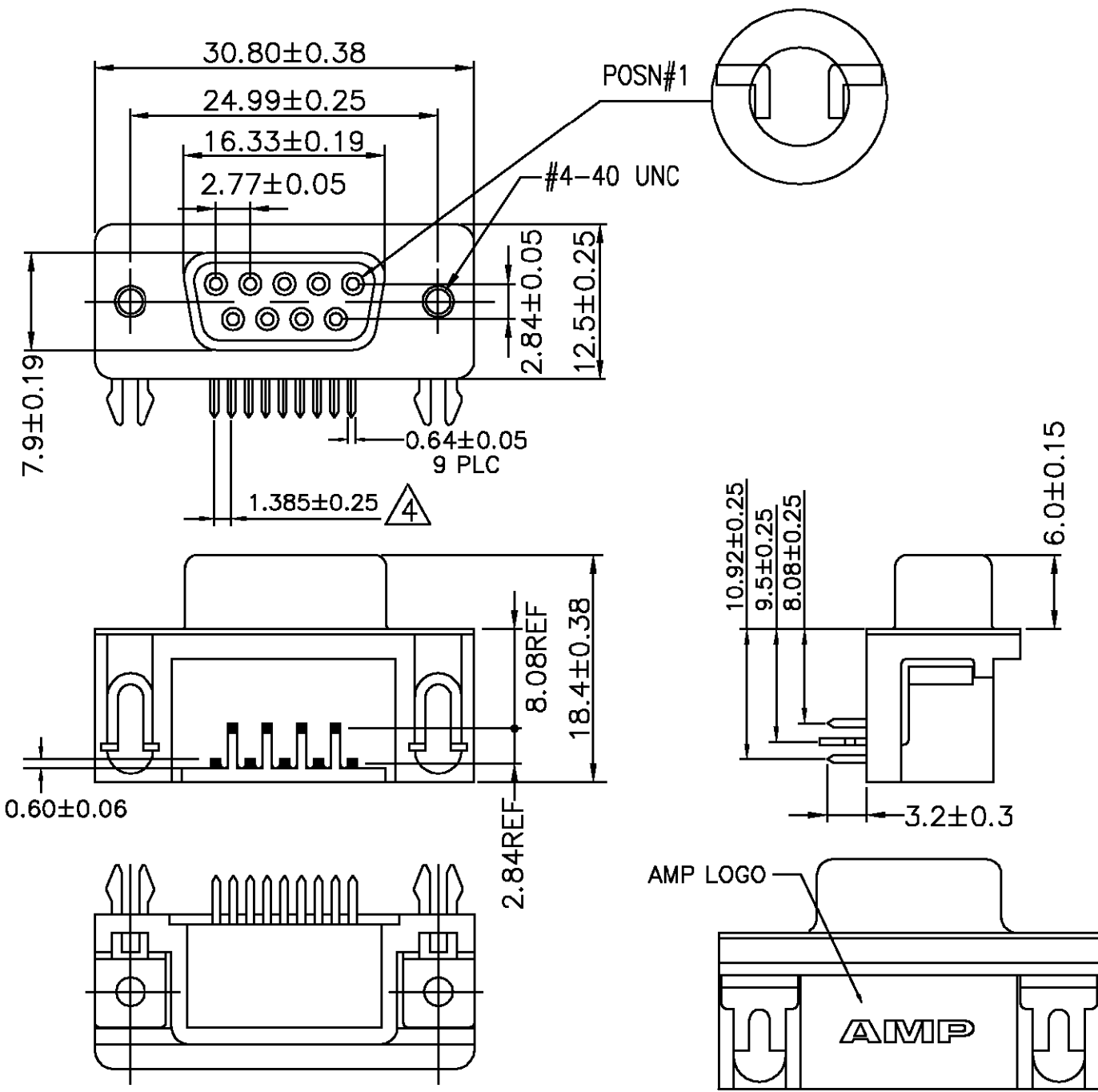
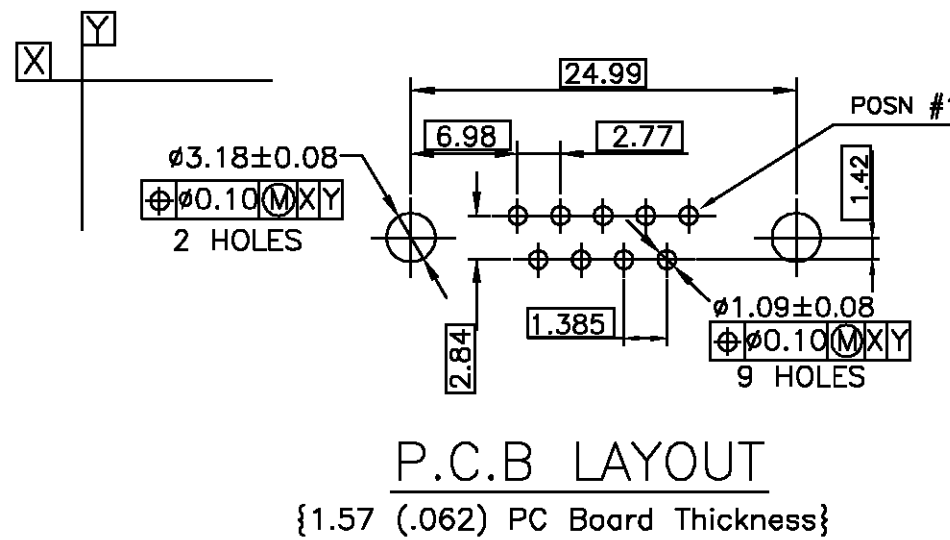


LOC	DIST	REVISIONS					
AD	00	P	LTR	DESCRIPTION	DATE	DWN	APVD
			0	NEW RELEASE	1SEPT99	MM	SG



- ① HOUSING: PBT, UL 94V-0 RATED, COLOR (SEE TABLE)  
 CONTACTS: PHOSPHOR BRONZE.  
 SHELL: STEEL.  
 BOARDLOCKS: BRASS.  
 THREADED INSERTS: BRASS.
- ② CONTACTS: GOLD PLATED (SEE TABLE) ON MATING END, 2.54µm[.000100in]  
 MIN TIN-LEAD ON SOLDER TAILS ALL OVER 1.27µm[.000050in] MIN NICKEL  
 ON ENTIRE CONTACT.  
 SHELL: NICKEL PLATED.  
 BOARDLOCK: TIN OR TIN-LEAD PLATED 2.54µm[.000100in]  
 THREADED INSERT: NICKEL PLATED 0.76µm[.000030in].
- ③ SPECIFICATIONS:  
 CURRENT RATING: 2 AMPS. (SIGNAL APPLICATION ONLY)  
 VOLTAGE RATING: 250 VAC.  
 DIELECTRIC WITHSTANDING VOLTAGE: 500 VAC(RMS).  
 INSULATION RESISTANCE: 1000 MEGOHMS MIN.  
 CONTACT RESISTANCE: 20 MILLIOHMS MAX.  
 OPERATING TEMPERATURE: -55° TO 105°C.
- ④ DIMENSION IS NON-CUMULATIVE.
- 5. SPECIFICATIONS SUBJECT TO CHANGES WITHOUT NOTICE.  
 CONTACT AMP FOR THE LATEST SPECIFICATIONS.



Packaging	Color	Contact Finish	AMP Part NO.
Tray	Black	0.38µm[.000015in]	788750-2
Tray	Black	Gold-Flash	788750-1

THIS DRAWING IS A CONTROLLED DOCUMENT.

DIMENSIONS:	TOLERANCES UNLESS OTHERWISE SPECIFIED:	DWN	01SEP99
MM	0 PLC ± -	M.MORRIS	
	1 PLC ± 0.3	CHK	01SEP99
	2 PLC ± 0.2	S.GOOD	
	3 PLC ± 0.1	APVD	01SEP99
	4 PLC ± -	S.GOOD	
	ANGLES ± -	PRODUCT SPEC	
		APPLICATION SPEC	
MATERIAL	FINISH	NAME	
SEE NOTES ①	SEE NOTES ②	AMP Incorporated	
		Harrisburg, PA 17105-3608	
		RECEPTACLE ASSEMBLY, 9 POSN, RIGHT ANGLE, 8.08mm[0.318in] SERIES, AMPLIMITE	
		SIZE	CAGE CODE
		A3	00779
		DRAWING NO	RESTRICTED TO
		©=788750	
		CUSTOMER DRAWING	SCALE
			1:1
			SHEET
			1 OF 1
			REV
			0