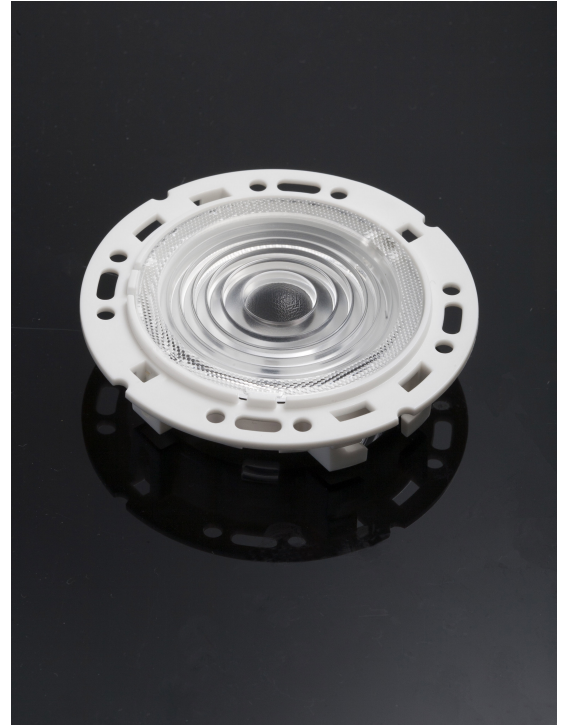


RONDA-S

~25° spot beam with holder A compatible with 3rd party connectors from TE, Bender Wirth and IDEAL

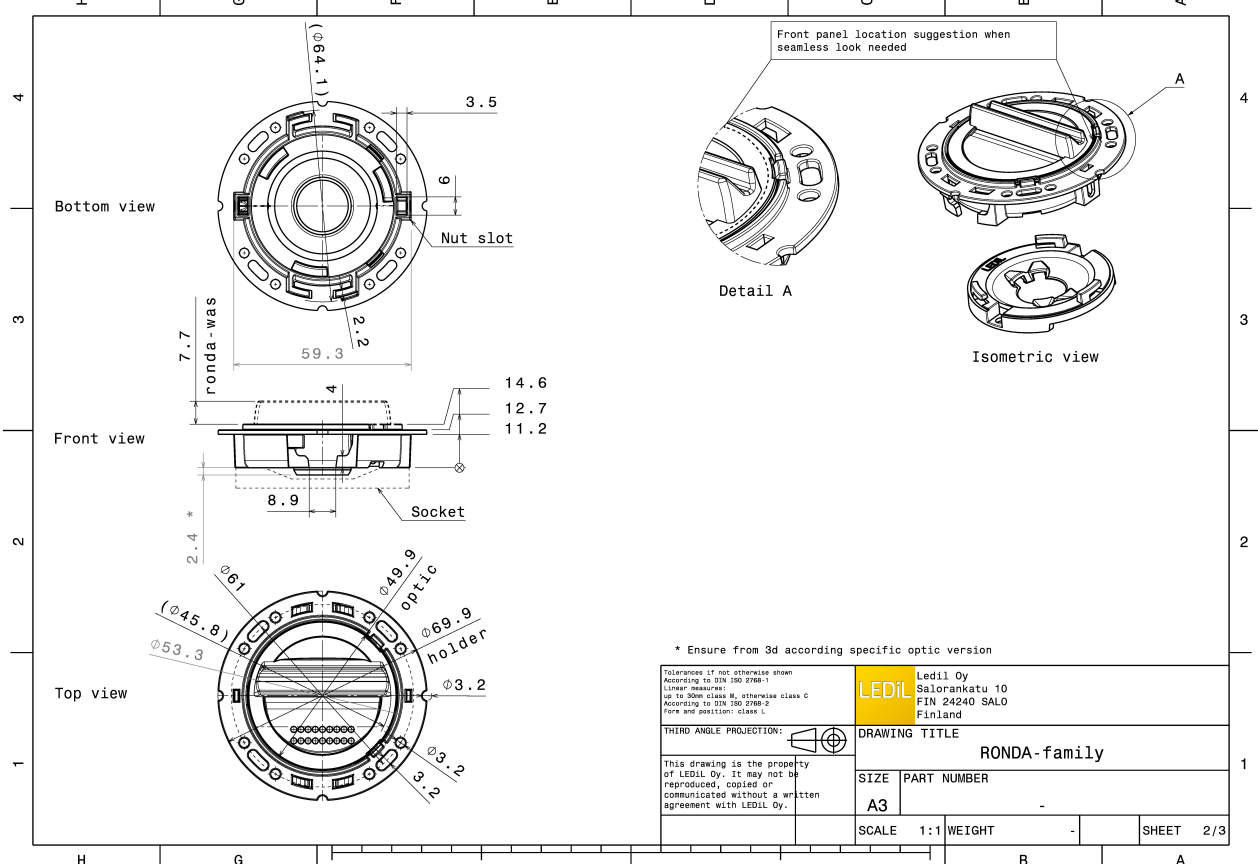
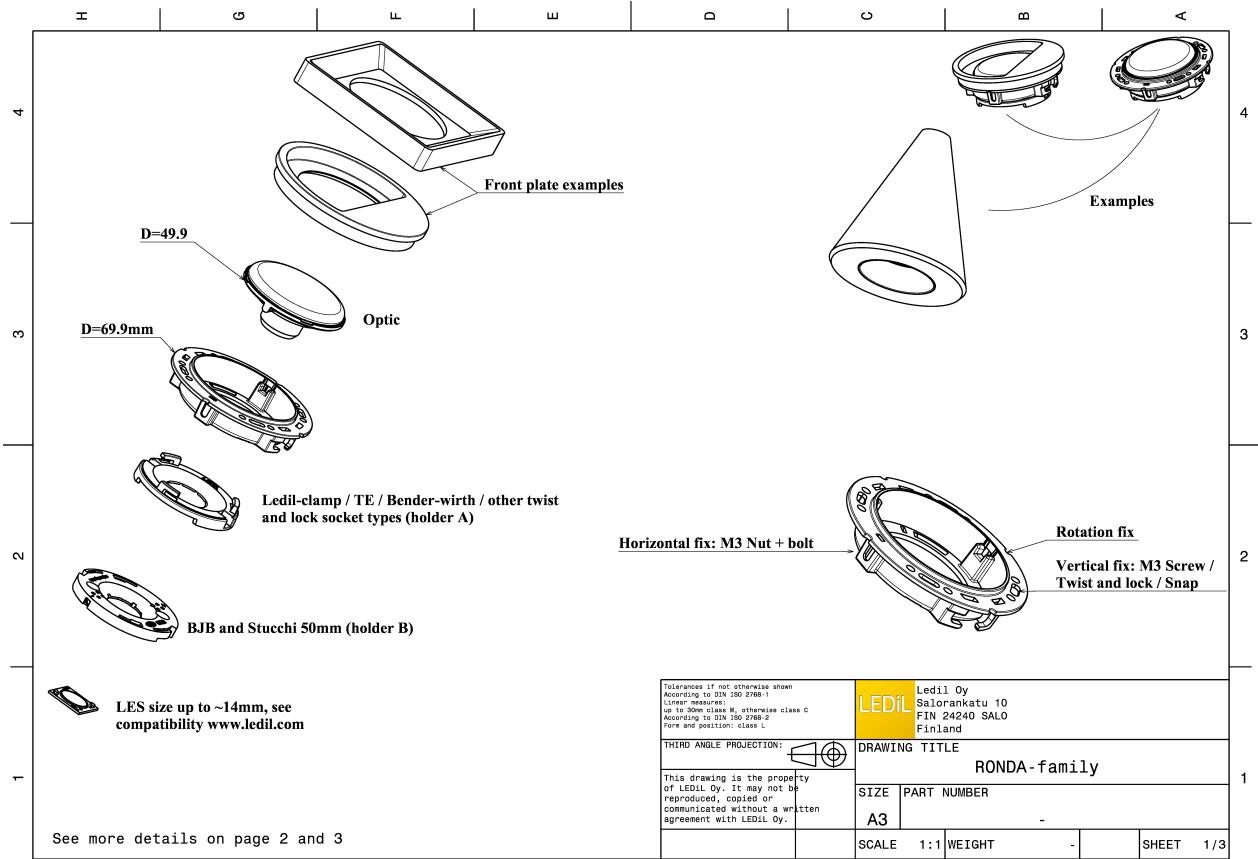
TECHNICAL SPECIFICATIONS:

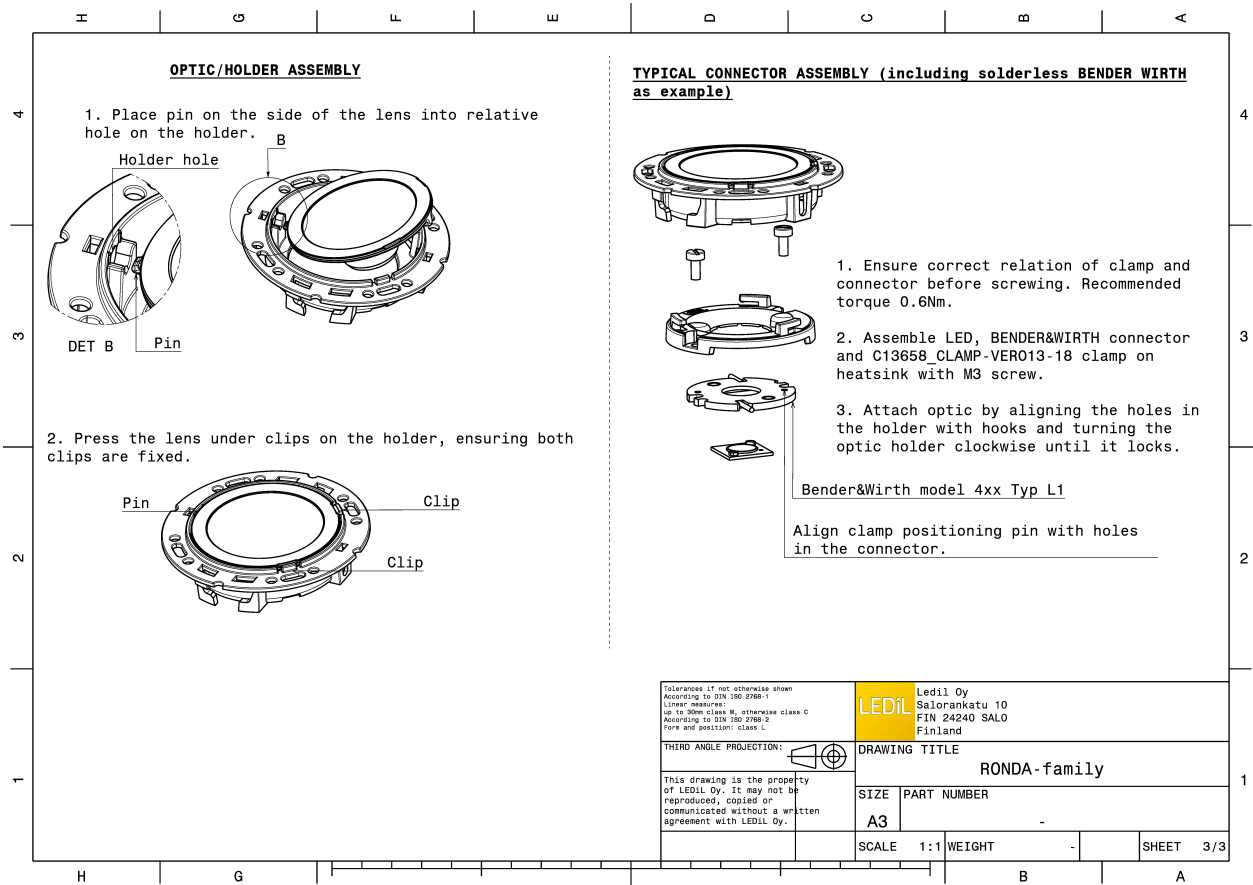
Dimensions	Ø 69.9 mm
Height	14.6 mm
Fastening	screw
Colour	white
Box size	
Box weight	0 kg
Quantity in Box	420 pcs
ROHS compliant	yes ⓘ




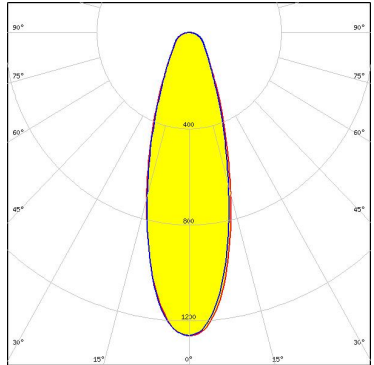

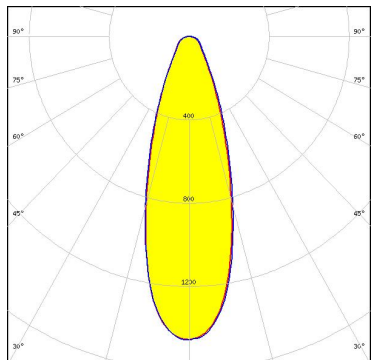
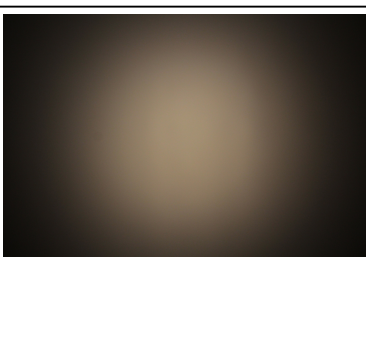
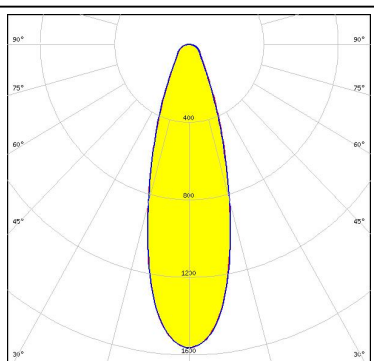

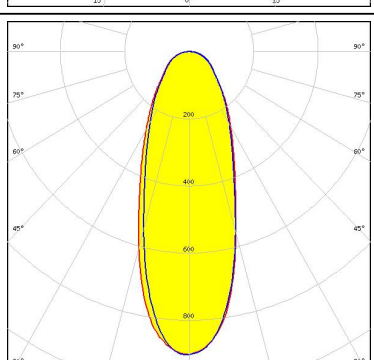
MATERIAL SPECIFICATIONS:

Component	Type	Material	Colour
RONDA-S	Lens	PMMA	clear
RONDA-HLD-A	Holder	PC	white





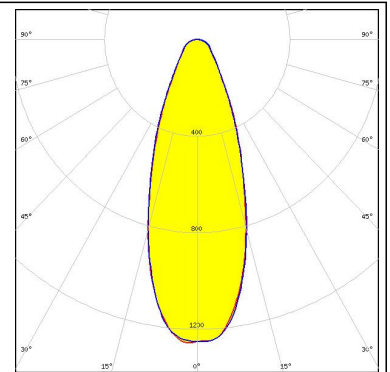
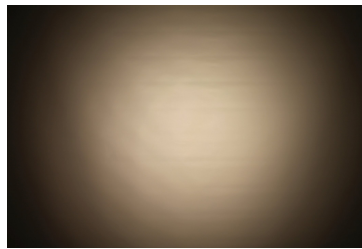
PHOTOMETRIC DATA (MEASURED):

<p>bridgelux.</p> <p>LED V13 Gen7</p> <p>FWHM 32.0°</p> <p>Efficiency 80 %</p> <p>Peak intensity 1.300 cd/lm</p> <p>Required components: TE: 2213254-2 + OPTIC CLIP Z50 TYPE1 2213194-1</p>		
<p>bridgelux.</p> <p>LED Vero SE 13</p> <p>FWHM 33.0°</p> <p>Efficiency 86 %</p> <p>Peak intensity 1.500 cd/lm</p> <p>Required components: C16402_CLAMP-VEROSE-13-18</p>		
<p>bridgelux.</p> <p>LED VERO13</p> <p>FWHM 32.0°</p> <p>Efficiency 87 %</p> <p>Peak intensity 1.600 cd/lm</p> <p>Required components: C13658_CLAMP-VERO13-18</p>		
<p>bridgelux.</p> <p>LED VERO18</p> <p>FWHM 39.0°</p> <p>Efficiency 81 %</p> <p>Peak intensity 0.900 cd/lm</p> <p>Required components: C13658_CLAMP-VERO13-18</p>		

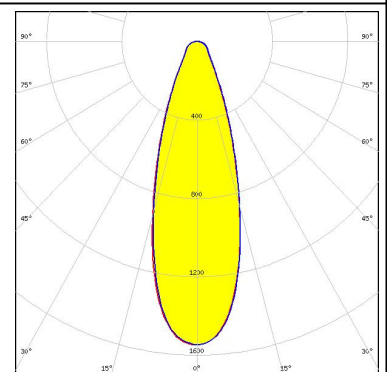
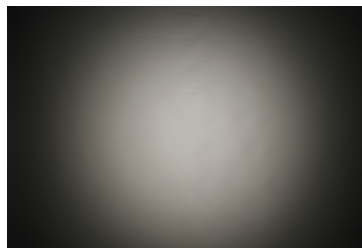
PHOTOMETRIC DATA (MEASURED):



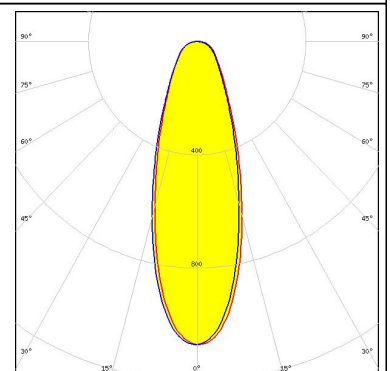
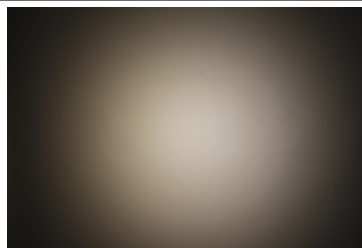
LED CMA1840
 FWHM 38.0°
 Efficiency 88 %
 Peak intensity 1.300 cd/lm
 Required components:
 C14123_CLAMP-CXA15-18



LED CXA/B 1816 & CXA/B 1820 & CXA 1850
 FWHM 33.0°
 Efficiency 88 %
 Peak intensity 1.500 cd/lm
 Required components:
 C13658_CLAMP-VERO13-18
 LEDiL: C14123_CLAMP-CXA15-18

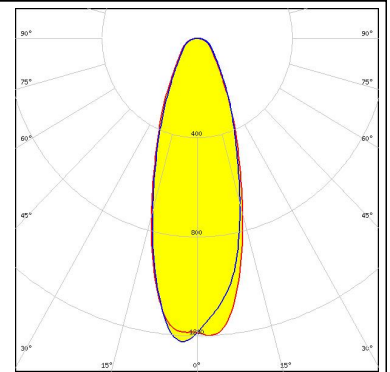
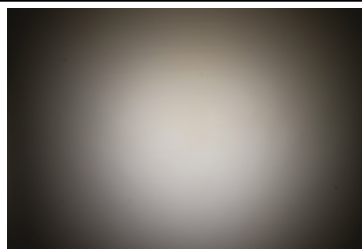


LED Fortimo SLM L15 Standard
 FWHM 34.0°
 Efficiency 79 %
 Peak intensity 1.100 cd/lm
 Required components:



SEOUL SEMICONDUCTOR

LED AC Zhaga COB
 FWHM 36.0°
 Efficiency 83 %
 Peak intensity 1.200 cd/lm
 Required components:
 Optosource: SEHSMJD-A



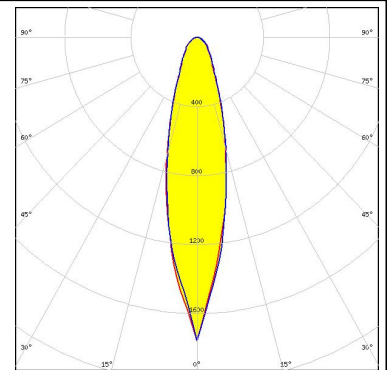
PHOTOMETRIC DATA (MEASURED):



PHOTOMETRIC DATA (SIMULATED):



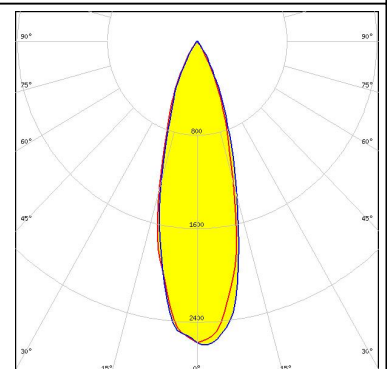
LED V13 Gen7
 FWHM 24.0°
 Efficiency 73 %
 Peak intensity 1.750 cd/lm
 Required components:
 IDEAL: 50-2103CT + 50-2100AN



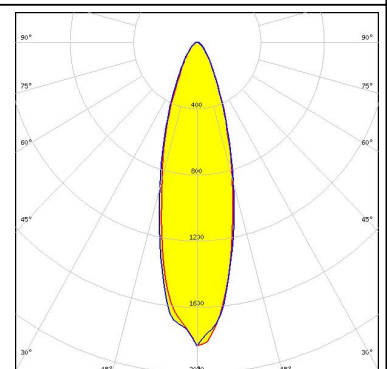
LED CXA/B 1816 & CXA/B 1820 & CXA 1850
 FWHM 27.0°
 Efficiency 85 %
 Peak intensity cd/lm
 Required components:
 TE: 2213401-2 + OPTIC CLIP Z50 TYPE1 2213194-1



LED CXA/B 1816 & CXA/B 1820 & CXA 1850
 FWHM 29.0°
 Efficiency 85 %
 Peak intensity 2.550 cd/lm
 Required components:
 C14123_CLAMP-CXA15-18



LED SLE G6 LES15
 FWHM 29.0°
 Efficiency 78 %
 Peak intensity 1.800 cd/lm
 Required components:
 TE: 2213254-2 + OPTIC CLIP Z50 TYPE1 2213194-1



GENERAL INFORMATION:

NOTE: The typical beam angle will be changed by different color, chip size and chip position tolerance. The typical total beam angle is the full angle measured where the luminous intensity is half of the peak value.

Due to use of high power COB's with this product, special attention to proper thermal design is highly recommended. LEDiL has no liability for direct, indirect or consecutive damages arising from the LEDiL products being used outside of the recommended temperature range.

MATERIALS:

As part of our continuous research and improvement processes, and to ensure the best possible quality and availability of our products, LEDiL reserves the right to change material grades without notice.

PRODUCT DATA USER AGREEMENT AND DISCLAIMER:

The measured data in the provided downloadable LEDiL Product Datasheets and Mechanical 2D-Drawings is rounded and provided as reference for planning. LEDiL Oy's optical specifications have been verified by conducting performance testing of the products in accordance with the company's quality system. The reported data are averaged results of multiple measurements with typical variation. LEDiL Oy reserves the right to without prior notification make changes and improvements to its products.

LEDiL Oy assumes neither warranty, nor guarantee nor any other liability of any kind for the contents and correctness of the provided data. The provided data has been generated with highest diligence but the provided data may in reality not represent the complete possible variation range of all intrinsic parameters. Therefore, in certain cases a deviation from the provided data could occur.

LEDiL Oy reserves the right to undertake technical changes of its products without further notification which could lead to changes in the provided data. LEDiL Oy assumes no liability of any kind for the possible deviation from any provided data or any other damage resulting from the usage of the provided data.

The user agrees to this disclaimer and user agreement with the download or usage of the provided files.

LEDiL Oy

Joensuunkatu 13
FI-24240 SALO
Finland

LEDiL Inc.

228 West Page Street
Suite D
Sycamore IL 60178
USA

Local sales and technical support

[www.ledil.com/
where_to_buy](http://www.ledil.com/where_to_buy)

Shipping locations

Salo, Finland
Hong Kong, China

Distribution Partners

[www.ledil.com/
where_to_buy](http://www.ledil.com/where_to_buy)