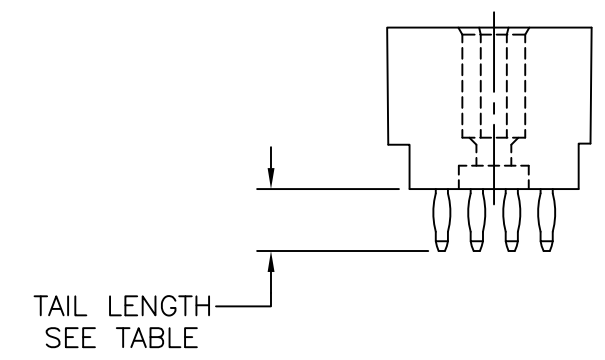
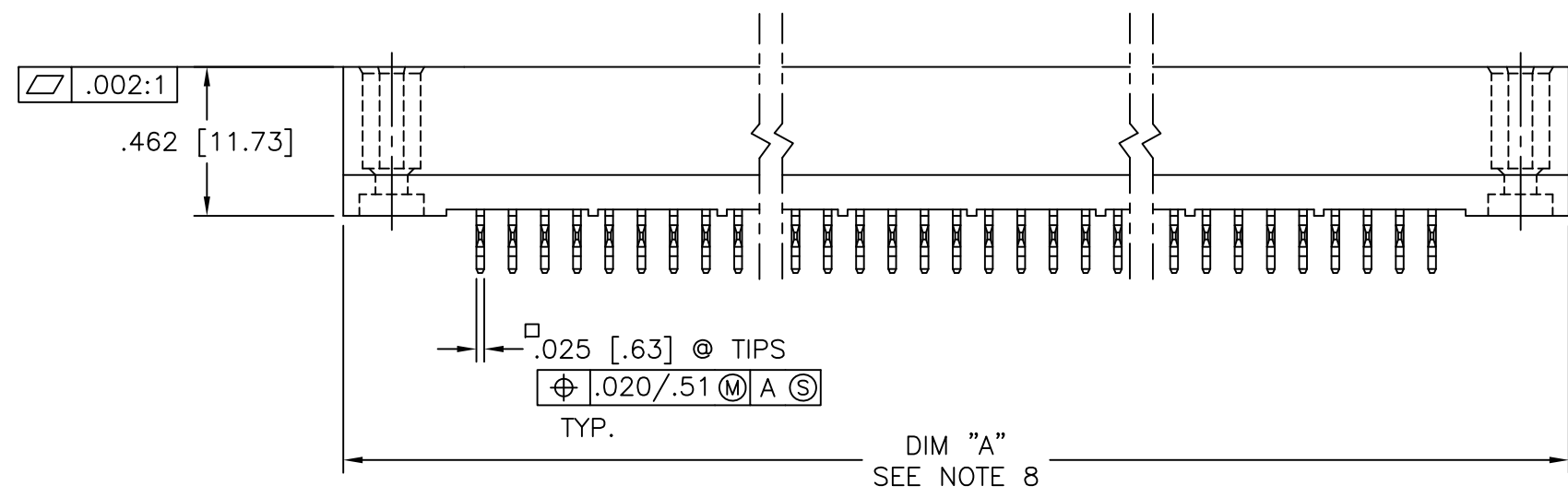
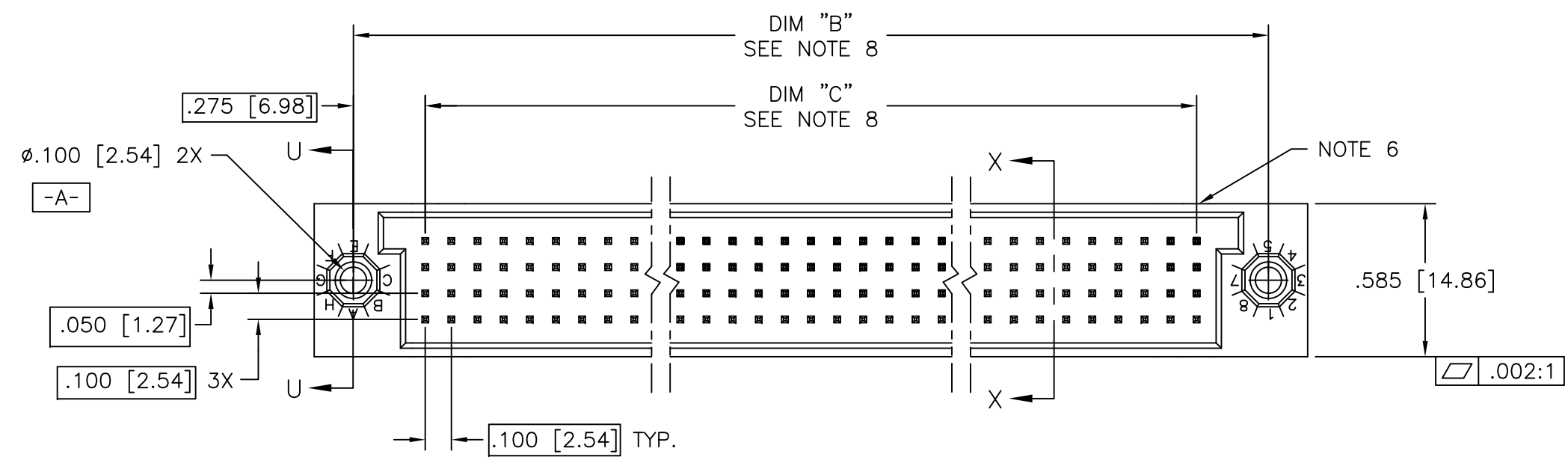


PRODUCT NUMBER
SEE TABLE

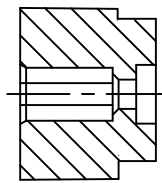


mat'l. code				surface ISO 1302 ✓		tolerance ISO 406 ISO 1101		projection INCH/MM		product family HPC			
-										title 4 ROW VERTICAL HEADER MULTI-PLATED P.F. PINS, 0 G.P.			
ltr	ecn no	dr	date	tolerances unless otherwise specified						dwg no			
J	ELX-I-19010	MJA	10/08/14	angles	linear	.xx ±.01/.3	INCH/MM		sheet 1 of 6		size		
K	ELX-I-24967	MJA	09/19/16			.xxx ±.005/.13			50760		A3		
				σ±2'		.xxxx ±.0020/.051	scale 1:1				type		
								Amphenol FCi		Product Customer Drawing			
sheet		revision		K	H	K	H	J	K				
index		sheet		1	2	3	4	5	6				

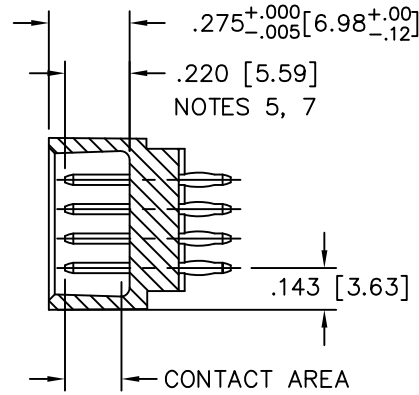


Copyright FCI

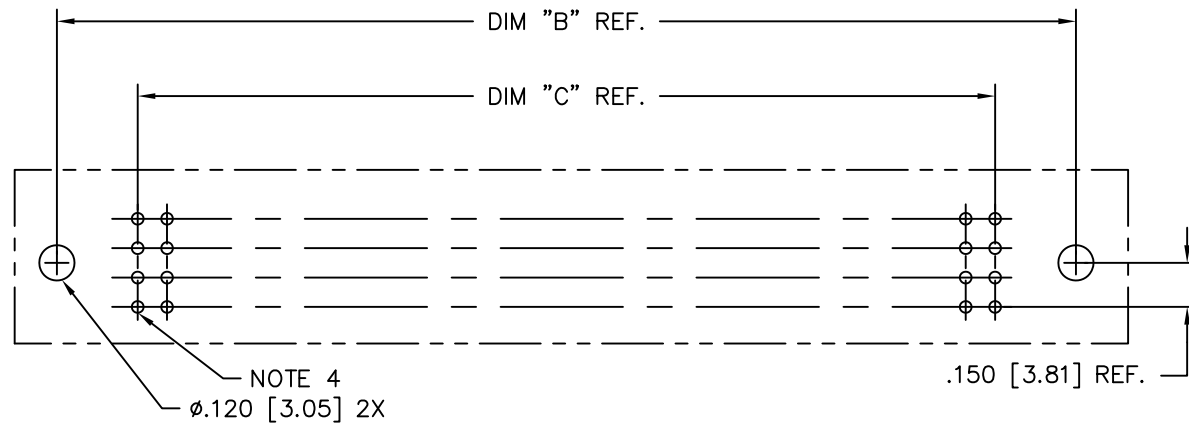
PRODUCT NUMBER
SEE TABLE



SECTION U-U



SECTION X-X



RECOMMENDED PCB LAYOUT
(ALL HOLES LOCATED ON .100/2.54 GRID
UNLESS OTHERWISE SPECIFIED)

NOTES:

- ① PRODUCT NUMBERING CODE:
50760 - X YYY Z LF
 - LEAD FREE (OPTIONAL)
 - TAIL LENGTH (SEE TABLE)
 - NO. OF POSITIONS (NOTE 2)
 - PLATING (SEE TABLE)
 - BASE NUMBER
- ② THIS PRODUCT IS CONFIGURED IN SIZES OF 6 thru 80 COLUMNS IN INCREMENTS OF ONE.
i.e.: 6,7,8,9,.....79,80.
- ③ HOUSING MATERIAL: GLASS AND MINERAL FILLED HIGH TEMP. THERMOPLASTIC. FLAME RETARDANT PER UL94V-0. COLOR: BLACK.
PIN MATERIAL: PHOS BRONZE
- ④ ϕ .0453/1.151 DRILLED HOLE PLATED WITH .0003/.007 MIN. SnPb OVER .001/.03 to .003/.08 Cu. PLATING TO ACHIEVE A ϕ .040 \pm .003/1.02 \pm .08 HOLE.
- ⑤ TO ASSURE PROPER INSTALLATION: TOOLING, AS SPECIFIED IN INSTRUCTION MANUAL 155915-001 MUST BE USED. PIN MATING LENGTH WILL BE \pm .002/.05 AFTER INSTALLATION.
- ⑥ COMPANY NAME, PART NUMBER AND LOT CODE TO APPEAR ON THIS SURFACE PER BUS-22-108.
- ⑦ REFERENCE 50807 FOR F.M.L.B. AVAILABLE OPTIONS AND WORKSHEET.
- ⑧ LENGTH DIMENSION CALCULATIONS:
DIM A: $.100/2.54 \times \text{NO. OF COLUMNS} + .750/19.05$
DIM B: $.100/2.54 \times \text{NO. OF COLUMNS} + .450/11.43$
DIM C: $.100/2.54 \times \text{NO. OF COLUMNS} - .100/2.54$
9. THIS PRODUCT (WITH "LF" SUFFIX) MEETS EUROPEAN UNION DIRECTIVES AND OTHER COUNTRY REGULATIONS AS DESCRIBED IN GS-22-008.
10. THIS HOUSING WILL WITHSTAND EXPOSURE TO 260 °C PEAK TEMPERATURE FOR 10-30 SECONDS IN A CONVECTION, INFRA-RED OR VAPOR PHASE OVEN.



Copyright FCI

mat'l. code		surface		tolerance		projection		product family		
-		ISO 1302 ✓		ISO 406 ISO 1101				HPC		
ltr	ecn no	dr	date	tolerances unless otherwise specified						
H				angles	linear	.xx \pm .01/.3		title		
				$\sigma \pm 2'$.xxx \pm .005/.13		4 ROW VERTICAL HEADER		
						.xxx \pm .0020/.051		MULTI-PLATED P.F. PINS, 0 G.P.		
		dr	P. PARSONS	4/12/94	scale 1:1		dwg no		sheet 2 of 6	size
		enr	J. AFTON	4/11/95			50760		A3	
		chr	G. PETERS	4/15/94			type		Product Customer Drawing	
		appd	S. CLARK	4/18/94						
sheet index	revision sheet									

PRODUCT NO.	NUMBER OF POSITIONS	PLATING: CONTACT AREA	MIN PLATING: PRESS-FIT AREA	MIN PLATING: TAIL AREA	TAIL LENGTH REF
50760-AYYYA	YYY	30u"/0.76u Au	40u"/1.02u SnPb	40u"/1.02u SnPb	.177 / 4.50
50760-AYYYG	YYY	30u"/0.76u Au	40u"/1.02u SnPb	40u"/1.02u SnPb	.250 / 6.35
50760-BYYYA	YYY	30u"/0.76u GXT	40u"/1.02u SnPb	40u"/1.02u SnPb	.177 / 4.50
50760-BYYALF	YYY	30u"/0.76u GXT	40u"/1.02u Sn	40u"/1.02u Sn	.177 / 4.50
50760-BYYYG	YYY	30u"/0.76u GXT	40u"/1.02u SnPb	40u"/1.02u SnPb	.250 / 6.35
50760-BYYGLF	YYY	30u"/0.76u GXT	40u"/1.02u Sn	40u"/1.02u Sn	.250 / 6.35
50760-CYYYC	YYY	30u"/0.76u Au	40u"/1.02u SnPb	30u"/0.76u Au	.533 / 13.54
50760-CYYD	YYY	30u"/0.76u Au	40u"/1.02u SnPb	30u"/0.76u Au	.733 / 18.62
50760-DYYYC	YYY	30u"/0.76u GXT	40u"/1.02u SnPb	30u"/0.76u GXT	.533 / 13.54
50760-DYYCLF	YYY	30u"/0.76u GXT	40u"/1.02u Sn	30u"/0.76u GXT	.533 / 13.54
50760-DYYD	YYY	30u"/0.76u GXT	40u"/1.02u SnPb	30u"/0.76u GXT	.733 / 18.62
50760-DYYDLF	YYY	30u"/0.76u GXT	40u"/1.02u Sn	30u"/0.76u GXT	.733 / 18.62
50760-XX003	180	30u"/0.76u GXT	30u"/0.76u GXT	Au FLASH	SEE SHEET 4
50760-XX003LF	180	30u"/0.76u GXT	30u"/0.76u GXT	Au FLASH	SEE SHEET 4
50760-XX036	80	30u"/0.76u Au	40u"/1.02u SnPb	40u"/1.02u SnPb	SEE SHEET 5
50760-XX036LF	80	30u"/0.76u Au	40u"/1.02u Sn	40u"/1.02u Sn	SEE SHEET 5
50760-XX037LF	80	30u"/0.76u Au	40u"/1.02u Sn	40u"/1.02u Sn	SEE SHEET 6



Copyright FCI

mat'l. code		surface		tolerance		projection		product family	
-		ISO 1302 ✓		ISO 406 ISO 1101				HPC	
ltr	ecn no	dr	date	tolerances unless otherwise specified		INCH/MM		title	
K				angles	linear	.xx ±.01/.3 .xxx ±.005/.13 .xxxx ±.0020/.051		4 ROW VERTICAL HEADER MULTI-PLATED P.F. PINS, 0 G.P.	
sheet index		revision sheet		dr	engr	chr	appd	scale 1:1	type
				P. PARSONS	M JACOB	ALOSIUS STALIN	BIJU K PAUL	Amphenol FCI	Product Customer Drawing
				4/12/94	09/19/16	09/19/16	09/19/16	dwg no	sheet 3 of 6 size
								50760	A3

PRODUCT NUMBER
50760-XX003
50760-XX003LF

SPECIAL LOAD 50760-XX003 AND 50760-XX003LF SHOWN ON THIS SHEET

	1	5	10	15	20	25	30	35	40	45
D	B									B
C										
B										
A										

PIN
1

ITEM KEY	SIGNAL DATA			
	SIZE 4 x 45	TOTAL NO. OF POSITIONS -180	NO. OF POSITIONS LOADED - 180	
	PLATING - 30u"/.76u GXT	PRESS FIT STYLE		
	QTY.	MATING LENGTH	TAIL LENGTH	TOTAL PIN LENGTH
A	178	.180 / 4.57	.557 / 14.15	.924 / 23.47
B	2	.210 / 5.33	.587 / 14.91	.984 / 24.99

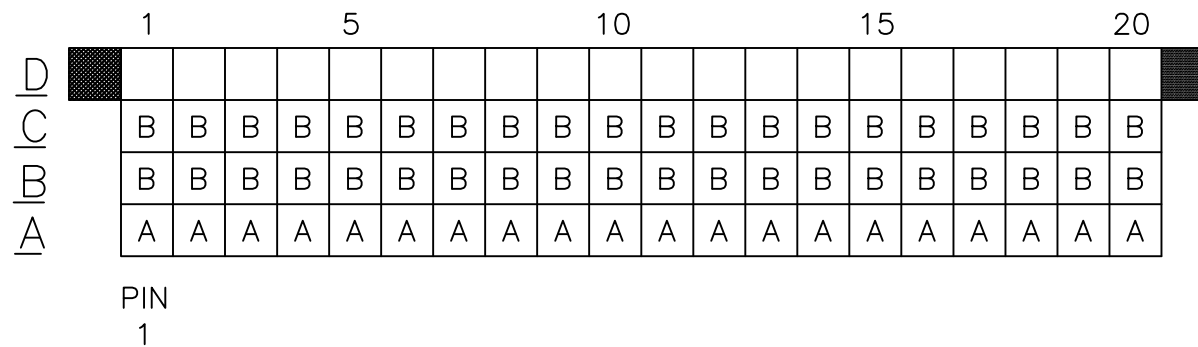
PLATING NOTE: POST-PLATED

- ALL POSITIONS ARE LOADED WITH "A", EXCEPT AS SHOWN.
- COLUMN 1, ROW A IS DESIGNATED AS SIGNAL PIN 1, AS VIEWED FROM THE MATING FACE.

mat'l. code		surface		tolerance		projection		product family	
-		ISO 1302 ✓		ISO 406 ISO 1101				HPC	
ltr	ecn no	dr	date	tolerances unless otherwise specified		INCH/MM		title	
H				angles	linear	.XX ±.01/.3 .XXX ±.005/.13 .XXXX ±.0020/.051		4 ROW VERTICAL HEADER MULTI-PLATED P.F. PINS, 0 G.P.	
				σ±2'		scale 1:1		dwg no	
				dr	P. PARSONS	4/12/94		sheet 4 of 6 size	
				enr	J. AFTON	4/11/95		50760 A3	
				chr	G. PETERS	4/15/94		type	
				appd	S. CLARK	4/18/94		Product Customer Drawing	
sheet index	revision sheet								

PRODUCT NUMBER
50760-XX036
50760-XX036LF

SPECIAL LOAD 50760-XX036 AND 50760-XX036LF SHOWN ON THIS SHEET



ITEM KEY	SIGNAL DATA		
	SIZE 4 x 20	TOTAL NO. OF POSITIONS - 80	NO. OF POSITIONS LOADED - 60
	PLATING - 30u"/.76u Au DUPLEX		PRESS FIT STYLE
	QTY.	MATING LENGTH	TAIL LENGTH
A	20	.220 / 5.59	.250 / 6.35
B	40	.180 / 4.57	.250 / 6.35

- ALL BLANK POSITIONS ARE NOT LOADED
- COLUMN 1, ROW A IS DESIGNATED AS SIGNAL PIN 1, AS VIEWED FROM THE MATING FACE.

mat'l. code		surface		tolerance		projection		product family	
-		ISO 1302 ✓		ISO 406 ISO 1101				HPC	
ltr	ecn no	dr	date	tolerances unless otherwise specified		INCH/MM		title	
A				angles	linear	.xx ±.01/.3 .xxx ±.005/.13 .xxxx ±.0020/.051		4 ROW VERTICAL HEADER MULTI-PLATED P.F. PINS, 0 G.P.	
				σ±2'		scale 1:1		dwg no	
				dr	M JACOB	10/08/14		sheet 5 of 6 size	
				enr	M JACOB	10/08/14		50760 A3	
				chr	ALOSIUS STALIN	10/08/14			
				appd	BIJU K PAUL	10/08/14		type Product Customer Drawing	
sheet index	revision sheet								

PRODUCT NUMBER
50760-XX037LF

SPECIAL LOAD 50760-XX037LF SHOWN BELOW

	1	5	10	15	20															
D	B	B	B	B	B	B	B	B	B	B	B	B	B	B	B	B	B	B	B	B
C	B	B	B	B	B	B	B	B	B	B	B	B	B	B	B	B	B	B	B	B
B																				
A	A	A	A	A	A	A	A	A	A	A	A	A	A	A	A	A	A	A	A	A

PIN
1

ITEM KEY	SIGNAL DATA		
	SIZE 4 x 20	TOTAL NO. OF POSITIONS - 80	NO. OF POSITIONS LOADED - 60
	PLATING - 30u"/.76u Au DUPLEX		PRESS FIT STYLE
	QTY.	MATING LENGTH	TAIL LENGTH
A	20	.210 / 5.33	.250 / 6.35
B	40	.160 / 4.06	.250 / 6.35

- ALL BLANK POSITIONS ARE NOT LOADED
- COLUMN 1, ROW A IS DESIGNATED AS SIGNAL PIN 1, AS VIEWED FROM THE MATING FACE.

mat'l. code		surface		tolerance		projection		product family	
-		ISO 1302 ✓		ISO 406 ISO 1101				HPC	
ltr	ecn no	dr	date	tolerances unless otherwise specified		INCH/MM		title	
K				angles	linear	.xx ±.01/.3 .xxx ±.005/.13 .xxxx ±.0020/.051		4 ROW VERTICAL HEADER MULTI-PLATED P.F. PINS, 0 G.P.	
				σ±2'		scale 1:1		dwg no	
				dr	M JACOB	09/19/16	Amphenol FCi		sheet 6 of 6
				enr	M JACOB	09/19/16	50760		size
				chr	ALOSIUS STALIN	09/19/16			A3
				appd	BIJU K PAUL	09/19/16	type		Product Customer Drawing
sheet index	revision sheet								