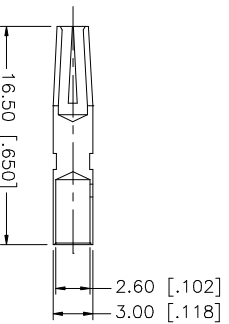
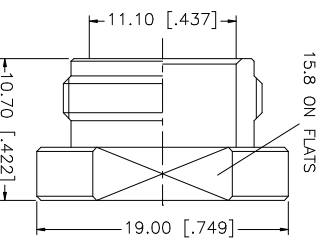
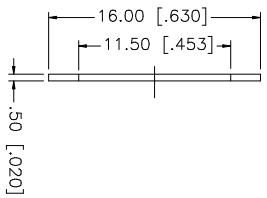
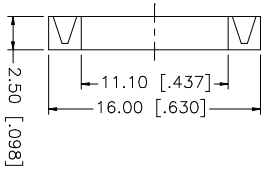
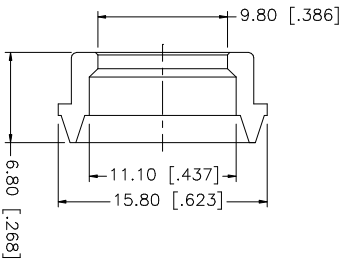
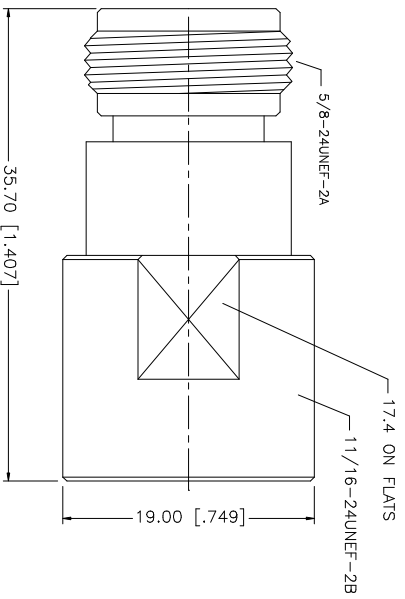
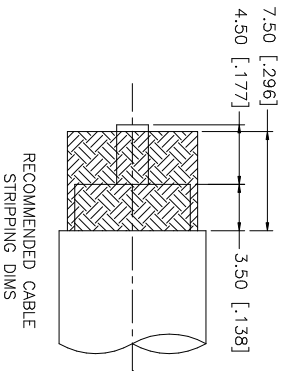


REV.	DATE	DESCRIPTION
NC	04/26/96	INITIAL RELEASE
A	07/29/06	UPDATE DRAWING FORMAT



NOTE:
1. CRIMPED CONTACT PIN HEX CRIMP SIZE .100"
OR SOLDER.

UNLESS OTHERWISE SPECIFIED DIMENSIONS ARE IN MILLIMETERS. DIMENSIONS IN [] ARE IN INCHES AND FOR CONVERSION TOLERANCE ONLY.		APPROVALS	DATE	PART DESCRIPTION N CLAMP JACK (FOR RG-213/U, 214/U, 8/U CABLE)
TOLERANCES FOR MILLIMETERS ARE: 0.5 - 8mm ± 0.20mm 8 - 30mm ± 0.40mm 30 - 120mm ± 0.50mm		DRAWN G.R.S.	07/29/06	
UNLESS OTHERWISE SPECIFIED DIMENSIONS ARE: TOLERANCES FOR INCHES ARE: .020 - .315 ± 0.007" .315 - 1.180 ± 0.015" 1.180 - 4.724 ± 0.020"		CHECKED		
		ISSUED		
		SHEET 1 OF 1		
		CAD FILE C:/172/172116.DWG		
		DWG. NO. 172116.DWG		
		REV. A		
		SIZE A		
		SCALE NA		

Amphenol Connex