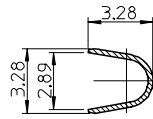
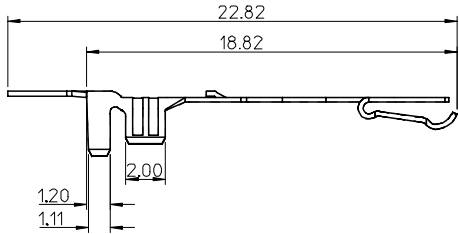
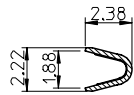


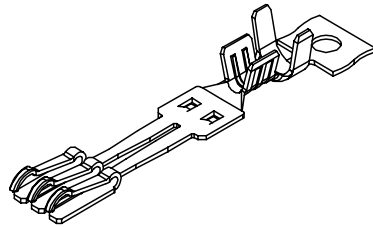
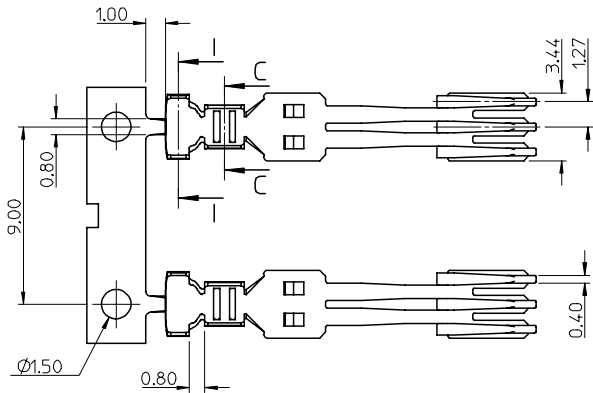
10 9 8 7 6 5 4 3 2 1



Section I-I

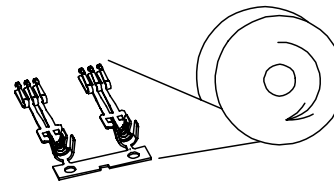


Section C-C

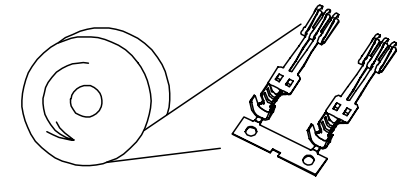


NOTES:

- MATERIAL :  
PHOSPHOR BRONZE, THICKNESS = 0.25mm
- PLATING :  
CONTACT AREA: (A) GOLD FLASH  
(B) GOLD PLATED 0.76 MICRON.  
(C) GOLD PLATED 0.38 MICRON.  
CRIMPING AREA: TIN PLATED 1.875 MICRON MINIMUM.  
UNDER PLATE: NICKELPLATED 1.25 MICRON MINIMUM.
- TO BE USED WITH 67582, 5 SETS TERMINAL PER HOUSING
- PRODUCT SPECIFICATION REFER TO PS-67490-002
- PACKAGE SPECIFICATION REFER TO PK-67581-001
- CRIMPING SPECIFICATION REFER TO CS-67581-001
- RECOMMEND WIRE SIZE: 18/20/22AWG
- PRODUCT COMPLIANT TO RoHS DIRECTIVE 2002/95/EC AND ELV DIRECTIVE 2000/53/EC.



BEFORE CRIMPING  
TYPE I



BEFORE CRIMPING  
TYPE II

P/N	CONTACT AREA GOLD PLATING	TYPE
67581-0000	GOLD FLASH	TYPE I
67581-0001	0.76 MICRON GOLD PLATING	
67581-0002	0.38 MICRON GOLD PLATING	
67581-0010	GOLD FLASH	TYPE II
67581-0011	0.76 MICRON GOLD PLATING	
67581-0012	0.38 MICRON GOLD PLATING	

NEW RELEASE EC NO: SH2007-0312 DRWN: BCHENZ6 CHKD: JTIAN APPR: JNCHEN	QUALITY SYMBOLS ▽=0 ▽=0	GENERAL TOLERANCES (UNLESS SPECIFIED)		DIMENSION STYLE MM ONLY		SCALE 4:1	DESIGN UNITS METRIC	THIRD ANGLE PROJECTION		
				DRAWN BY GRATE MA	DATE 2003/08/15	TITLE TERMINAL FOR SATA POWER CABLE RECEPTACLE				
				CHECKED BY YAJUN	DATE 2003/08/15	APPROVED BY SAM				
				MATERIAL NO. SEE TABLE		DOCUMENT NO. SD-67581-001		SHEET NO. 1 OF 1		
DRAFT WHERE APPLICABLE MUST REMAIN WITHIN DIMENSIONS		SIZE A3		THIS DRAWING CONTAINS INFORMATION THAT IS PROPRIETARY TO MOLEX INCORPORATED AND SHOULD NOT BE USED WITHOUT WRITTEN PERMISSION						

9 8 7 6 5 4 3 2 1