



1

2

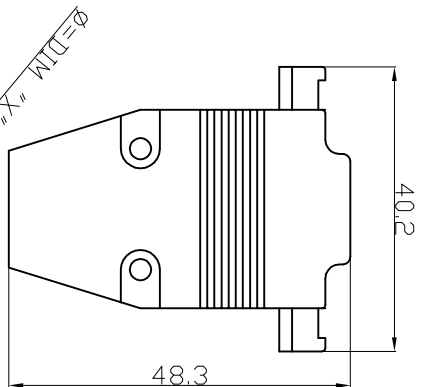
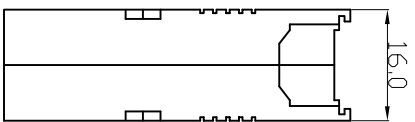
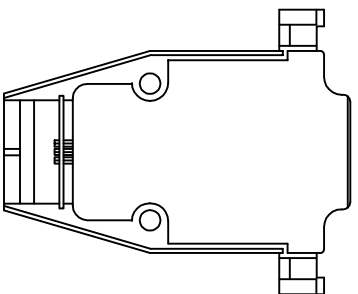
3

4

5

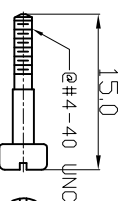
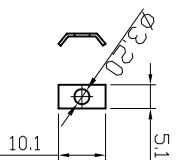
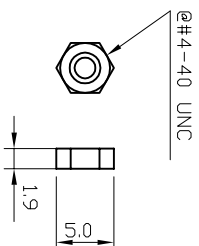
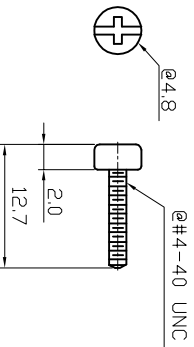
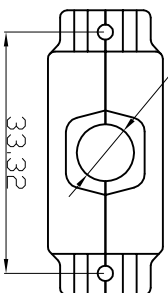
6

7




- NOTE:
1. MATERIAL: zinc alloy
  2. FINISHED: chromate plated
  3. Contact No. : 15 Poles
  4. CABLE ENTRY SIZE: DIMENSION OF "X"=10.0mm
  5. PARTS OPTION: SHORT SCREW

### AGP 15 G-METALL



## RoHS compliant

Scale	1:1								
TOLERANCE									
X.	±0.5	④	Add the 50 poles	09.01.2015	Winnie	Drawn	07.12.2007	Ken	Customer-No. ASSMANN WSW-No. <b>AGP XX G-METALL</b>
X.X	±0.3	③	Modify dimension X	25.11.2009	Dean	Approved	09.01.2015	Winnie	
X.XX	±0.2	②	Update	03.11.2009	Dean	 <b>ASSMANN</b> WSW/ components			Drawing-No. ASS 0464 CO
DIM	TOL	①	Drawn	07.12.2007	Ken				Replace
Angle	±5°								Sheet 2/5

1

2

3

4

5

6

7

G

H

A

B

C

D

E

F

1

2

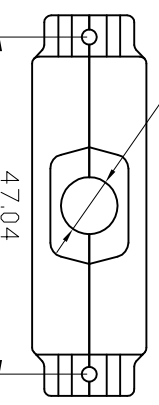
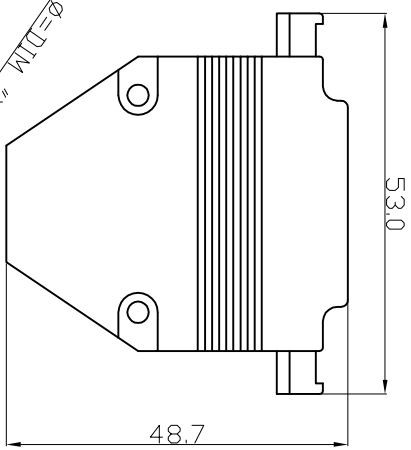
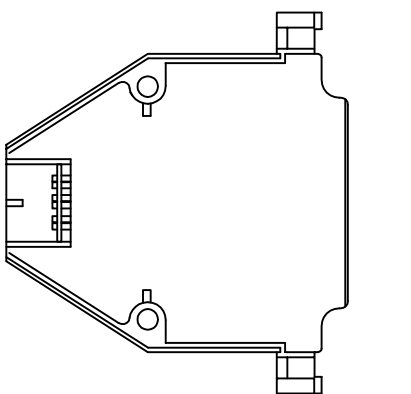
3

4

5

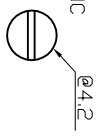
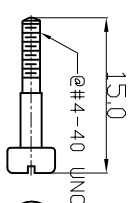
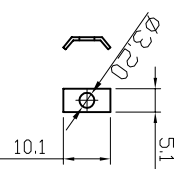
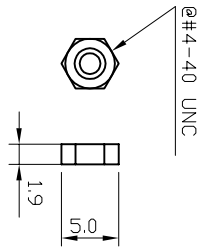
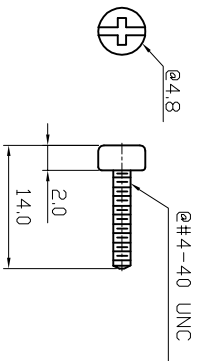
6

7



- NOTE:
1. MATERIAL: zinc alloy
  2. FINISHED: chromate plated
  3. Contact No.: 25 Poles
  4. CABLE ENTRY SIZE: DIMENSION OF "X" =10.0mm
  5. PARTS OPTION: SHORT SCREW

### AGP 25 G-METALL



## RoHS compliant

Scale	1:1		
TOLERANCE			
X.	±0.5	④	Add the 50 poles
X.X	±0.3	③	Modify dimension X
X.XX	±0.2	②	Update
DIM	TOL	①	Drawn
Angle	±5°		

Id.	Modification	Date	Name
①	Drawn	07.12.2007	Ken
②	Update	03.11.2009	Dean
③	Modify dimension X	25.11.2009	Dean
④	Add the 50 poles	09.01.2015	Winnie

Drawn	Date	Name
Drawn	07.12.2007	Ken
Approved	09.01.2015	Winnie

**ASSMANN**  
WSW/ components

Customer-No.

ASSMANN WSW-No.

AGP XX G-METALL

Drawing-No.

ASS 0464 CO

rev04

Replace

Sheet  
3/5

1

2

3

4

5

6

7

A

B

C

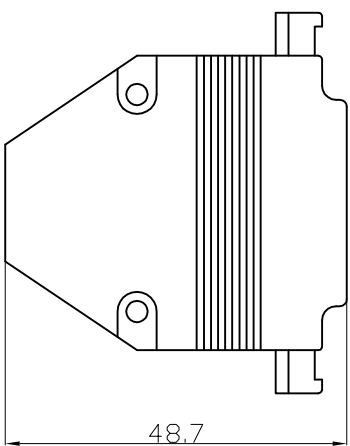
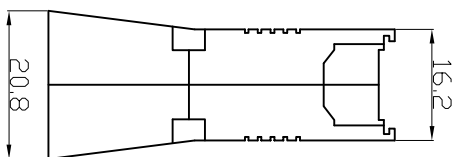
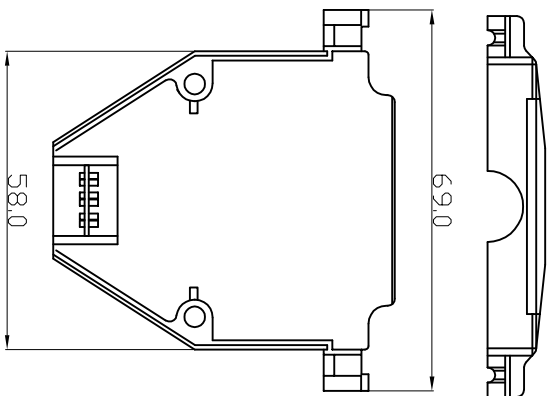
D

E

F

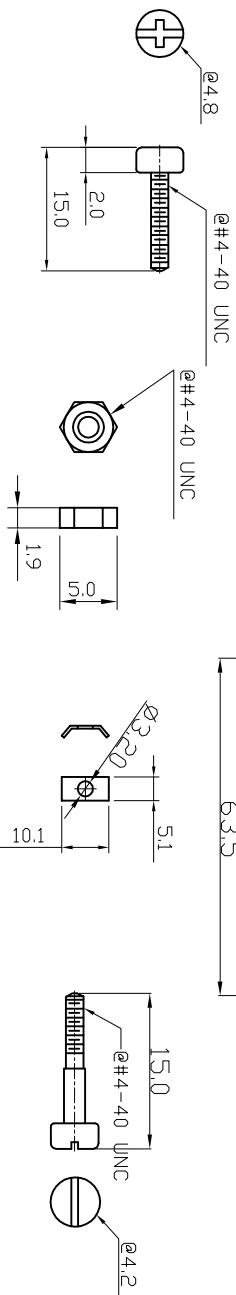
H

G



- NOTE:
1. MATERIAL: zinc alloy
  2. FINISHED: chromate plated
  3. Contact No. : 37 Poles
  4. CABLE ENTRY SIZE: DIMENSION OF "X" = 14.0mm

AGP 37 G-METALL



**RoHS compliant**

Scale	1:1
TOLERANCE	
X.	±0.5
X.X	±0.3
X.XX	±0.2
DIM	TOL
Angle	±5°
Id.	Modification
①	Drawn
②	Update
③	Modify dimension X
④	Add the 50 poles

Date	Name
07.12.2007	Ken
03.11.2009	Dean
25.11.2009	Dean
09.01.2015	Winnie

Date	Name
07.12.2007	Ken
09.01.2015	Winnie

**ASSMANN**  
WSW/ components

Customer-No.  
ASSMANN WSW-No.  
AGP XX G-METALL

Drawing-No.  
ASS 0464 CO

rev04

Replace

Sheet  
4/5

1

2

3

4

5

6

7

1

2

3

4

5

6

7

A

B

C

D

E

F

G

H

1

2

3

4

5

6

7

A



67.0

19.7

A

B

- NOTE:
1. MATERIAL: zinc alloy
  2. FINISHED: chromate plated
  3. Contact No. : 50 Poles
  4. CABLE ENTRY SIZE: DIMENSION OF "X" = 14.5mm

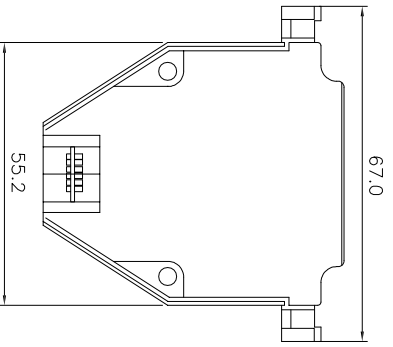
B

C

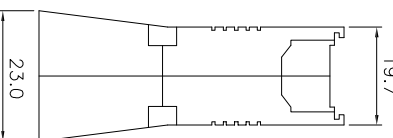
AGP 50 G-METALL

C

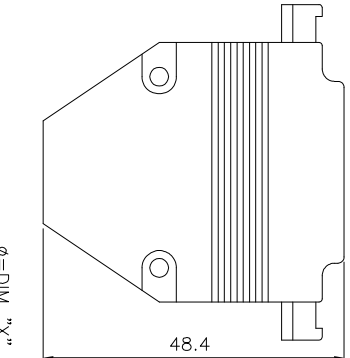
D



55.2



23.0

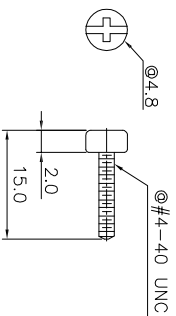


48.4

 $\phi = \text{DIM "X"}$ 

D

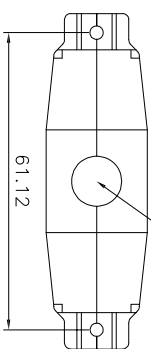
E

 $\phi 4.8$ 

2.0

 $\phi 4-40 \text{ UNC}$ 

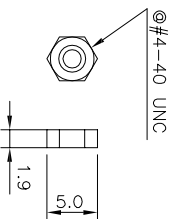
15.0

 $\phi 4.2$ 

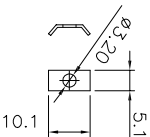
61.12

E

F

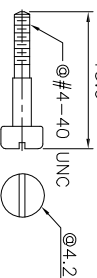
 $\phi 4-40 \text{ UNC}$ 

1.9

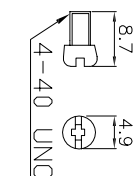
 $\phi 3.2$ 

5.1

10.1

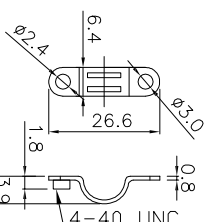


15.0

 $\phi 4.2$  $\phi 4-40 \text{ UNC}$ 

8.7

4-40 UNC

 $\phi 4.9$  $\phi 3.0$ 

6.4

26.6

 $\phi 3.9$ 

E

G

**RoHS compliant**

G

H

Scale	1:1
TOLERANCE	
X.	$\pm 0.5$
X.X	$\pm 0.3$
X.XX	$\pm 0.2$
DIM	TOL
Angle	$\pm 5^\circ$

Id.	Modification	Date	Name
①	Drawn	07.12.2007	Ken
②	Update	03.11.2009	Dean
③	Modify dimension X	25.11.2009	Dean
④	Add the 50 poles	09.01.2015	Winnie

Date	Name
Drawn	Ken
Approved	Winnie

Customer-No.	ASSMANN WSW-No.	AGP XX G-METALL
	ASSMANN WSW-No.	AGP XX G-METALL
	Drawing-No.	ASS 0464 CO
	Replace	rev04
		Sheet 5/5

H

1

2

3

4

5

6

7