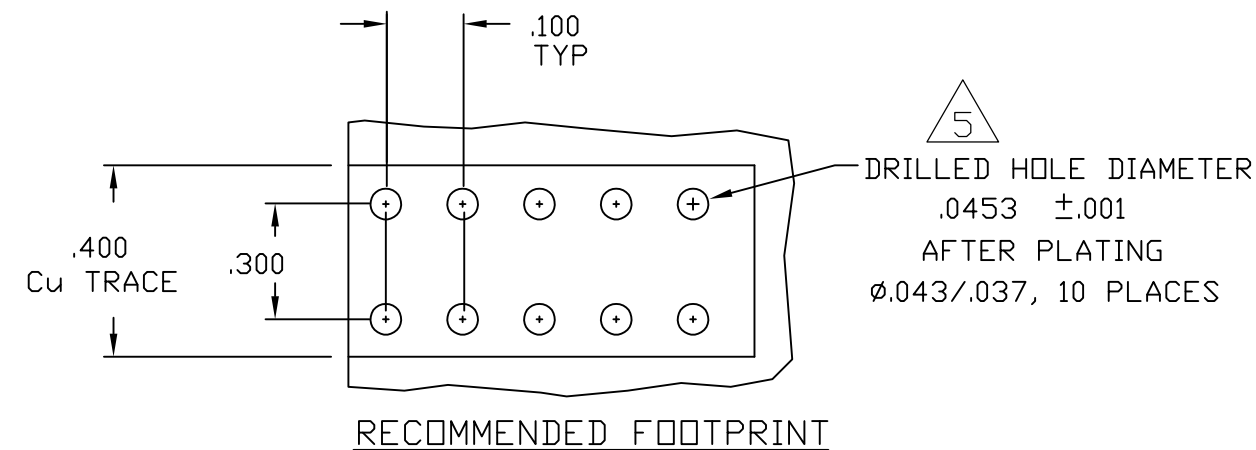
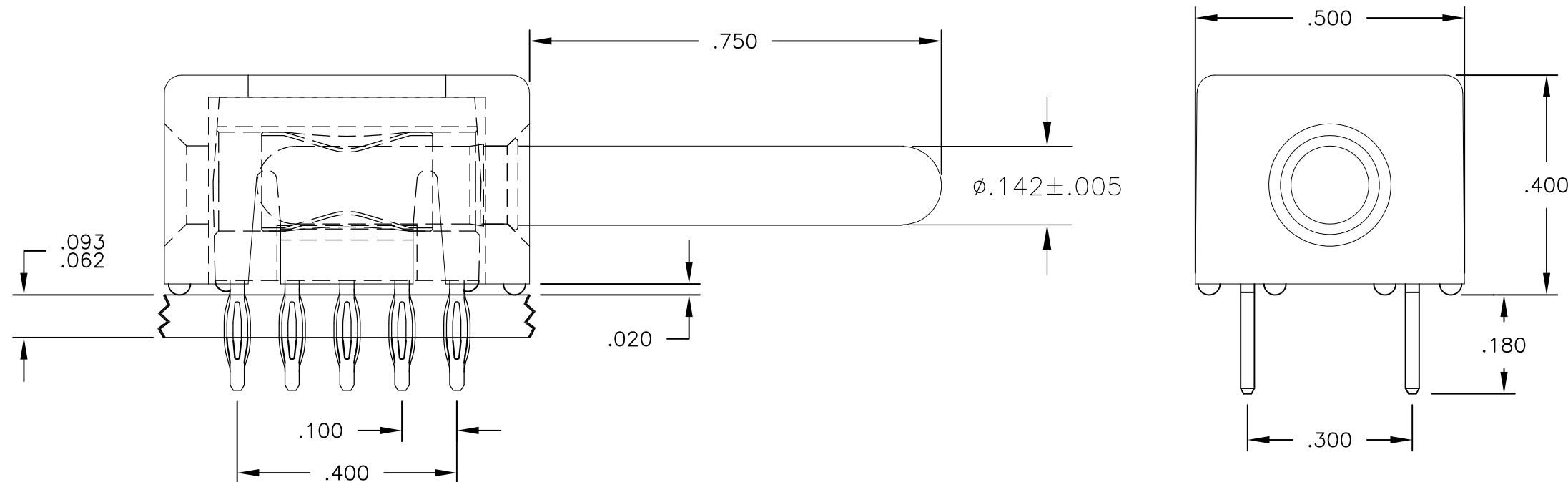


THIS DRAWING IS UNPUBLISHED. RELEASED FOR PUBLICATION
 © COPYRIGHT BY TYCO ELECTRONICS CORPORATION. ALL RIGHTS RESERVED.

LOC	DIST	REVISIONS					
GP	00	P	LTR	DESCRIPTION	DATE	DWN	APVD
			C	REV PER ECO-10-020184	12JAN2011	RG	NE



7 FINISH FOR COMPLIANT PIN: .00020 MIN THK. SILVER OVER
.000040 MIN THK. NICKEL.

6 FINISH FOR COMPLIANT PIN: .000040 MIN THK. TIN OVER
.000050 MIN THK. NICKEL.

5 FOR APPLICATIONS UTILIZING AN IMMERSION SILVER PLATED
PCB, CONTACT TYCO ENGINEERING.

4. FINISH:
 INSULATOR - AS MOLDED COLOR BLACK
 MODULE - SILVER PLATED .0002 MIN THK. OVER
 NICKEL .000040 MIN THK.
 CROWN - GOLD PLATED .000030 MIN THK. OVER
 NICKEL .000040 MIN THK.
 PIN CONTACT - SILVER PLATED .00020 MIN THK. OVER
 NICKEL .000040 MIN THK.

3. MATERIAL:
 INSULATOR - POLYESTER, GLASS FILLED, UL 94 V-0
 MODULE - ZINC ALLOY
 CROWN - COPPER ALLOY
 PIN CONTACT - BRASS
 COMPLIANT PIN - PHOSPHOR BRONZE

2. ITEMS PROVIDED TO THIS SPECIFICATION SHALL BE IDENTIFIED
 ON CONTAINER WITH THE FOLLOWING INFORMATION PART NUMBER
 AND DATE CODE OF MANUFACTURE.

1. PART NUMBER CHANGES AND/OR DESIGN CHANGES AFFECTING
 ITEM INTERCHANGEABILITY REQUIRE PRIOR TYCO APPROVAL
 AND AUTHORIZATION BY REVISION TO THIS DRAWING.

6	6643443-2
7	6643443-1
DESCRIPTION	PART NUMBER

THIS DRAWING IS A CONTROLLED DOCUMENT.		DWN	R.GRZYBOWSKI	21AUG06	Tyco Electronics Corporation Harrisburg, PA 17105-3608			
DIMENSIONS: INCHES		CHK	S.FLICKINGER	21AUG06	NAME			
TOLERANCES UNLESS OTHERWISE SPECIFIED:		APVD	S.FLICKINGER	21AUG06	ICCON PIN, PARALLEL, COMPLIANT PIN NONLOCKING, 10 PIN FOOTPRINT			
0 PLC ± -		PRODUCT SPEC		SIZE		CAGE CODE	DRAWING NO	RESTRICTED TO
1 PLC ± -		APPLICATION SPEC		A3		00779	C-6643443	-
2 PLC ± .02 [.3]		WEIGHT		CUSTOMER DRAWING		SCALE	SHEET	REV
3 PLC ± .010 [.25]		-		-		4:1	1 OF 1	C
4 PLC ± -		-		-				
ANGLES ± .5		-		-				
MATERIAL		FINISH		-				