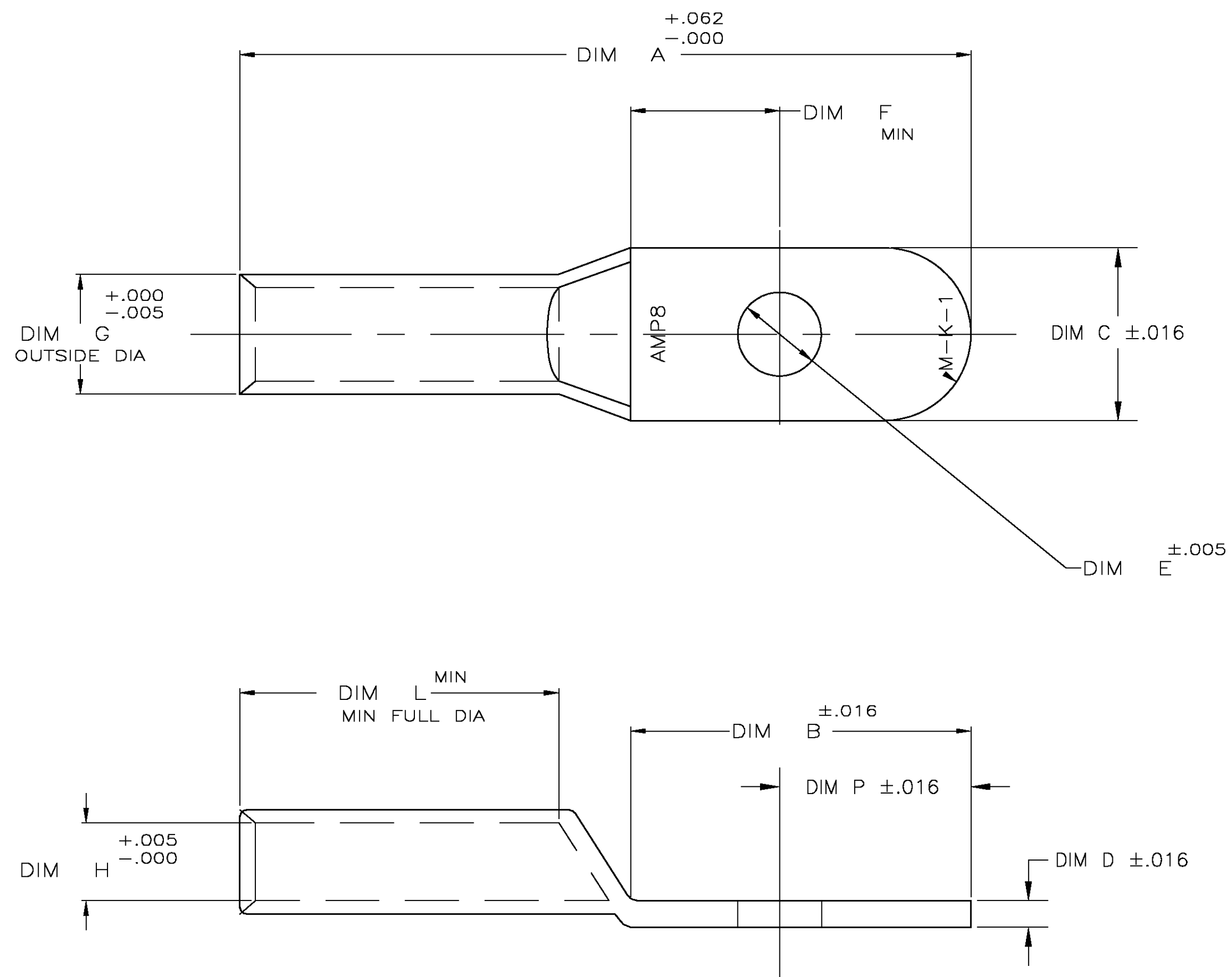


THIS DRAWING IS UNPUBLISHED. RELEASED FOR PUBLICATION
 © COPYRIGHT BY TYCO ELECTRONICS CORPORATION. ALL RIGHTS RESERVED.

LOC	DIST	REVISIONS					
G	86	P	LTR	DESCRIPTION	DATE	DWN	APVD
		E		REV PER 0G3A-0088-05	01JUN05	JR	MS



1 HIGH CONDUCTIVITY WROUGHT COPPER, ANNEALED.

OBSOLETE	.220	.700	.182	.286	.248	#8	.173 DIA	.094	.406	.500	1.437	606287-6
	.375	.700	.182	.286	.440	.375	.394 DIA	.062	.594	.846	1.781	606287-4
OBSOLETE	.343	.700	.182	.286	.355	.312	.331 DIA	.062	.594	.728	1.689	606287-3
OBSOLETE	.250	.700	.182	.286	.305	.250	.265 DIA	.078	.469	.587	1.531	606287-2
	.220	.700	.182	.286	.251	#10	.197 DIA	.094	.406	.502	1.437	606287-1
	P	L	H	G	F	BOLT HOLE SIZE	E	D	C	B	A	PART NO
DIMENSIONS, INCHES												

THIS DRAWING IS A CONTROLLED DOCUMENT.

DIMENSIONS: INCHES	TOLERANCES UNLESS OTHERWISE SPECIFIED: 0 PLC ± - 1 PLC ± - 2 PLC ± .02 3 PLC ± .005 4 PLC ± - ANGLES ± -	FINISH: ELECTRO TIN PLATE	DWN: JR RUTH 08OCT99 CHK: M SPICER 08OCT99 APVD: M SPICER 08OCT99	NAME: AMP TUBULAR TERMINAL, 8 AWG
MATERIAL:	FINISH: ELECTRO TIN PLATE	WEIGHT: -	SIZE: A2 CAGE CODE: 00779 DRAWING NO: C=606287	RESTRICTED TO: -
CUSTOMER DRAWING			SCALE: 1:1	SHEET 1 OF 1

606287