

HONEYWELL
PART NUMBER

ZW50F90AW1

Operation Characteristics

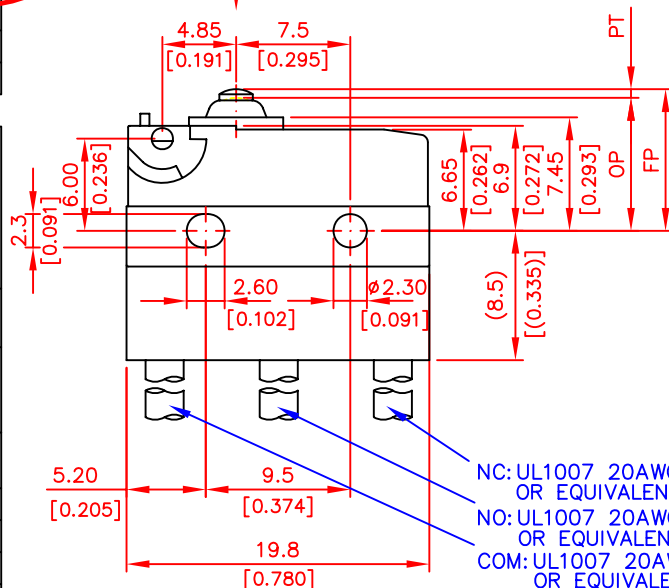
Operating Force (OF)	Max. 203 gf
Releasing Force (RF)	Min. 50 gf
Free Position (FP)	Max. 9.9 mm
Operating Position (OP)	8.4 ± 0.3 mm
Movement Differential (MD)	Max. 0.2 mm
Over-travel (OT)	Min. 0.6 mm
Pre-travel (PT)	Max. 1.2 mm

Specifications

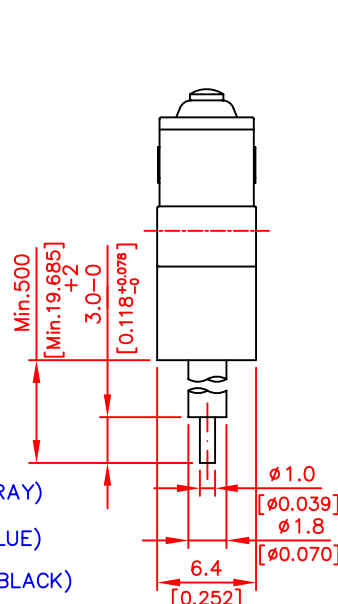
Initial Contact Resistance	Max. 100 mΩ.
	Before measure the switch contact resistance, please press the switch threetimes on and off. (Measured by ohm meter-Open Voltage<1VDC, Driver current-100mA)
Initial Dielectric Strength	1000 VAC(50-60HZ)/minute between contacts
	1,500VAC(50-60HZ)/minute between Live-parts and dead metal parts.
Circuit Arrangement	SPDT (Single pole double throw)
Rating	5A 125/250VAC, 6A 250VAC
Service Life	Min. 10,000 operations
Rating Load	Resistive Load
Operating Frequency	10~30 operations per minute
Safety certificate	UL, cUL, ENEC14, CE
IP Code:	IP 67
Mechanical Service Life	Min. 1,000,000 operations.
Operating Frequency	Max. 400 operations per minute



Need to inflict vertical force



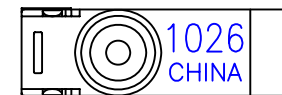
NC: UL1007 20AWG
OR EQUIVALENT (GRAY)
NO: UL1007 20AWG
OR EQUIVALENT (BLUE)
COM: UL1007 20AWG
OR EQUIVALENT (BLACK)



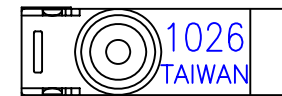
Environments

Storage Temperature	-25°C~85°C (with no icing)
Storage Humidity	at 40°C, Max. 85% R.H
Soldering By Hand	300°C maximum within 5 seconds.
Soldering Bath	260°C maximum within 5 seconds.

MADE IN CHINA



MADE IN TAIWAN

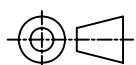


DATE CODE
1026
year week

DESIGN UNITS: MM
TOLERANCES UNLESS NOTED:

NO PLACES	X	±	1.000
ONE PLACE	.X	±	0.40
TWO PLACE	.XX	±	0.40
THREE PLACE	.XXX	±	0.40
ANGLES	X	±	3.0°

THIRD ANGLE PROJECTION



APPROVAL	CHECK	DRAWN
King	Leon	Morris

THIS DRAWING COVERS A PROPRIETARY ITEM AND IS THE PROPERTY OF HONEYWELL. THIS DRAWING IS NOT TO BE COPIED OR USED WITHOUT THE PERMISSION OF HONEYWELL.

INTERPRET PER ASME Y14.5M-1994 OTHER HONEYWELL ENGINEERING STANDARDS MAY APPLY

AUTOCAD

Honeywell

TITLE SWITCH

SIZE	TYPE	CAGE CODE	DRAWING NAME	REV
A4	-	-	ZW50F90AW1	D

SCALE	4 : 1	SHEET	1 OF 1
-------	-------	-------	--------