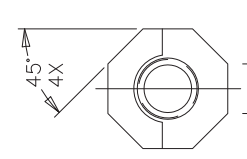


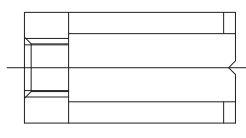
6 5 4 3 2 1

PRODUCT NO.	DIM A	DIM B
77030-001	.065/1.65	.310/7.87
77030-002	.450/11.43	.770/19.56
77030-001LF	.065/1.65	.310/7.87
77030-002LF	.450/11.43	.770/19.56

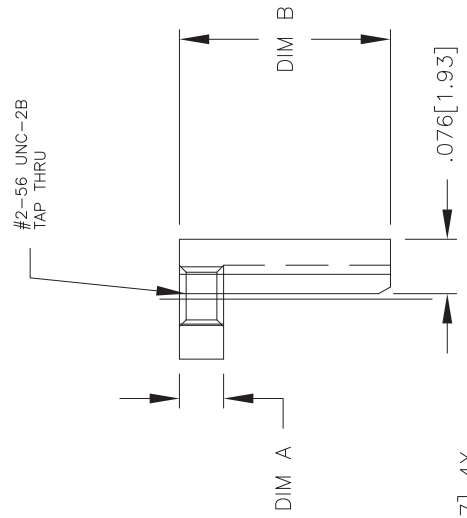
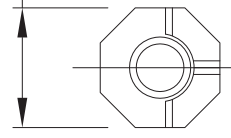
NOTE 2  
NOTE 2



.073 [1.85] 8X



.176 [4.47] 4X



NOTES:  
 ① MATERIAL: STAINLESS STEEL NO.416  
 ② THIS PRODUCT MEETS EUROPEAN UNION DIRECTIVES AND OTHER COUNTRY REGULATIONS AS DESCRIBED IN GS-22-008.

Copyright FCI

Fciconnect.com

form: A3

mat'l. code		surface	tolerance	projection	product family
NOTE 1		ISO 1302	ISO 406 ISO 1101		HPC
ltr	ecn no	dr	date	title	
B	14184	JRL	10/14/87	8 POSITION SCREW TYPE	
C	V90010	SAR	1/15/99	ORIENTATION INSERT	
D	V00717	LSS	3/22/00		
E	V05-0643	DCH	7/8/05		
F	M06-0283	MHT	7/27/06		
		enrg	D.HORCHLER 7/8/05		
		chr	T.BREWBAKER 7/8/05		
		appd	D.HORCHLER 7/8/05		
sheet	revision	F			
index	sheet	1			

6 5 4 3 2 1