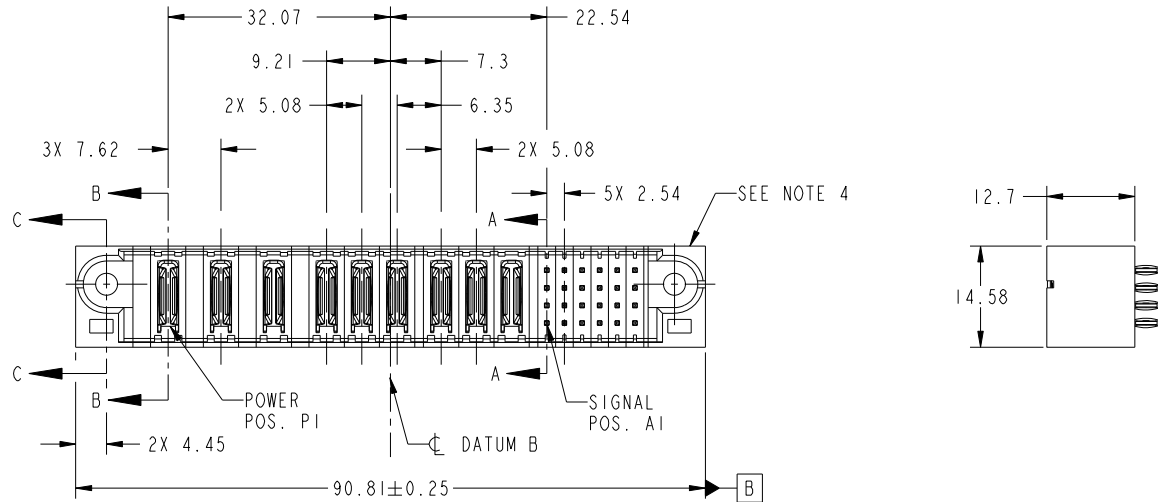


Tous droits strictement reserves. Reproduction ou communication a des tiers interdite sous quelque forme que ce soit sans autorisation écrite du propriétaire. Propriete de c FCI. Droits de reproduction FCI.



All rights strictly reserved. Reproduction or issue to third parties in any form whatever is not permitted without written authority from the proprietor. Property of FCI. Copyright FCI.

PRODUCT NO.	ROWS	POWER									SIGNAL							
		E1	P1	P2	P3	P4	P5	P6	P7	P8	P9	1	2	3	4	5	6	E2
51952-142-- NOTE ③	D C B A		PC	PC	PC	PC	PC	PC	PC	PC	PC	G	K	G	G	G	K	
												G	G	G	G	G	K	
												G	G	G	G	G	K	
												G	G	G	G	G	K	



CODE	DIM "M" MATING LENGTH	CONTACT TYPE
PC	[N/A]	POWER
G	[6.86]	SIGNAL
K	[5.59]	SIGNAL

mat'l code				tolerances unless otherwise specified		CUSTOMER			
lfr	ecn no.	dr	date	linear	0.X ± 0.5	COPY		www.fciconnect.com	
A	DG09-0018	WD	02/04/09	angles	0.XX ± 0.25	projection		title 9P + 24S	
					0.XXX ± 0.1			VERTICAL PRESS-FIT HEADER	
					0° ± 2°	MIM		product family PwrBlade code 213	
				dr	Warren Du 12/18/08	scale 1:1		size A	
				enr	Warren Du 12/18/08			dwg no 51952-142 sheet 1 of 4	
				chr	Gary Hsieh 12/18/08				
				appd	JOSEPH HSIA 12/18/08				
sheet index	revision sheet	A	A	A	A			cage code 22526	
		1	2	3	4				

Pro/E

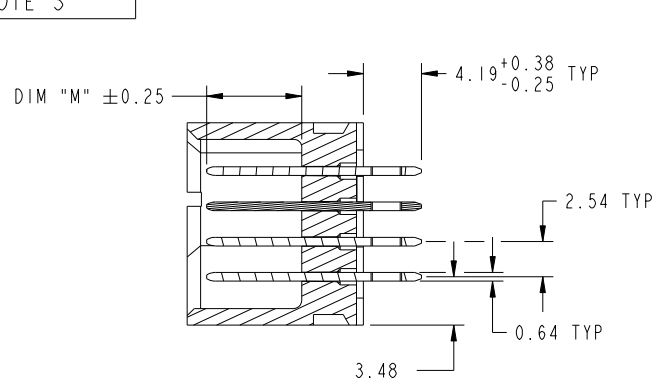
cage code 22526

Tous droits strictement reserves. Reproduction ou communication a des tiers interdite sous quelque forme que ce soit sans autorisation écrite du propriétaire. Propriete de c FCI. Droits de reproduction FCI.

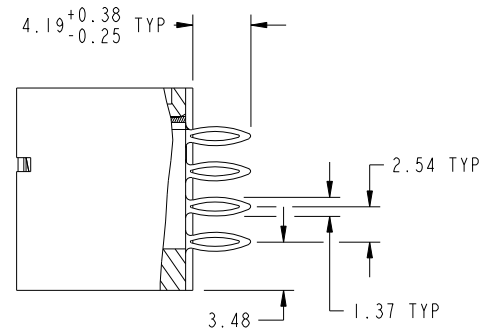


All rights strictly reserved. Reproduction or issue to third parties in any form whatever is not permitted without written authority from the proprietor. Property of FCI. Copyright FCI.

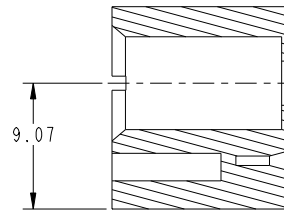
PRODUCT NUMBER  
51952-142--  
NOTE 3



SECTION A-A  
SCALE 2:1



SECTION B-B  
SCALE 2:1



SECTION C-C  
SCALE 2:1

mat'l code				tolerances unless otherwise specified			CUSTOMER		 www.fciconnect.com	
ltr	ecn no.	dr	date	linear	0.X ±0.5	projection	 MIM	title		
A					0.XX ±0.25			9P + 24S		
					0.XXX ±0.1			VERTICAL PRESS-FIT HEADER		
				angles	0° ±2°			product family	PwrBlade	code
				dr	Warren Du 12/18/08			size	dwg no	213
				enr	Warren Du 12/18/08			A	51952-142	sheet
				chr	Gary Hsieh 12/18/08					2 of 4
				appd	JOSEPH HSIA 12/18/08					
sheet index	revision sheet									

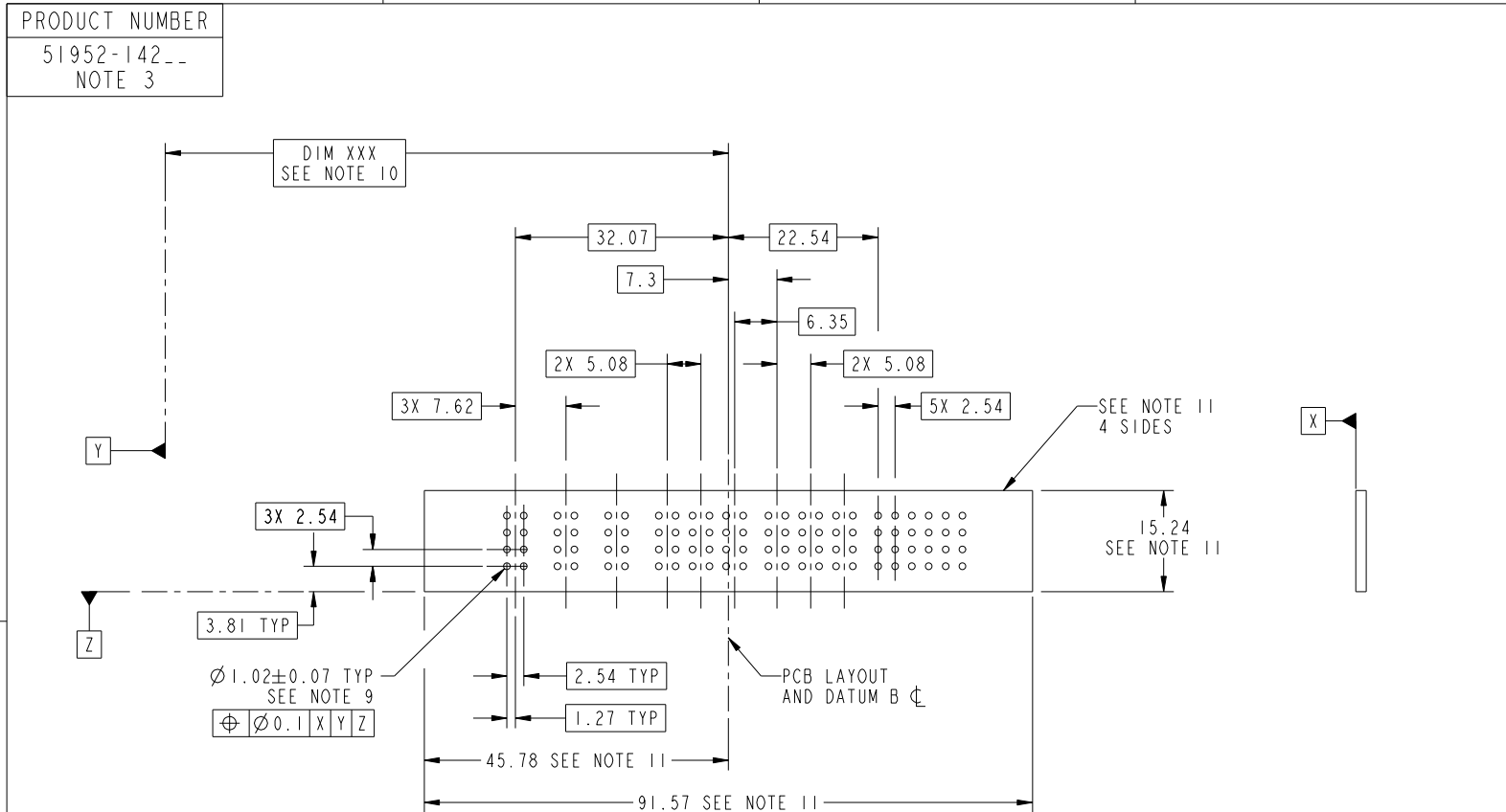
cage code 22526

Pro/E

Tous droits strictement reserves. Reproduction ou communication a des tiers interdite sous quelque forme que ce soit sans autorisation ecrite du proprietaire. Propriete de c FCI. Droits de reproduction FCI.



All rights strictly reserved. Reproduction or issue to third parties in any form whatever is not permitted without written authority from the proprietor. Property of FCI. Copyright FCI.



RECOMMENDED PCB LAYOUT

mat'l code				tolerances unless otherwise specified		CUSTOMER		 www.fciconnect.com	
ltr	ecn no.	dr	date	linear	0.X ± 0.5	COPY		title	
A					0.XX ± 0.25	projection		9P + 24S	
				angles	0.XXX ± 0.1			VERTICAL PRESS-FIT HEADER	
				dr	0° ± 2°			product family PwrBlade code	
				enr	Warren Du 12/18/08	scale		213	
				chr	Warren Du 12/18/08	1:1		sheet	
				appd	Gary Hsieh 12/18/08	A		3 of 4	
					JOSEPH HSIA 12/18/08			51952-142	
sheet index	revision sheet							cage code	
								22526	

Pro/E

cage code 22526

Tous droits strictement reserves. Reproduction ou communication a des tiers interdite sous quelque forme que ce soit sans autorisation écrite du propriétaire. Propriete de c FCI. Droits de reproduction FCI.



All rights strictly reserved. Reproduction or issue to third parties in any form whatever is not permitted without written authority from the proprietor. Property of FCI. Copyright FCI.

PRODUCT NUMBER  
51952-142--  
NOTE 3

NOTES:

1. DIMENSIONS AND TOLERANCES ARE IN ACCORDANCE WITH ASME Y14.5M, 1994 UNLESS OTHERWISE SPECIFIED.

CONNECTOR NOTES:

- 2 HOUSING MATERIAL: UL 94 V-0 GLASS FILLED HIGH-TEMP THERMOPLASTIC  
POWER CONTACT MATERIAL: COPPER ALLOY  
SIGNAL PIN MATERIAL: COPPER ALLOY
  - 3. SEE ITEM 3 & 4 IN PRINT 10064183 FOR PLATING SPEC OF 51952-142 AND 51952-142LF RESPECTIVELY.
  - 4 MANUFACTURER'S NAME, P/N, AND DATE CODE TO APPEAR ON THIS SURFACE.
  - 5. PRODUCT SPECIFICATION GS-12-149.  
APPLICATION SPECIFICATION BUS-20-067.
  - 6. PACKAGED IN TRAYS.
- PCB NOTES:
- 7. ALL HOLE DIAMETERS ARE FINISHED HOLE SIZE.
  - 8. MOUNTING HOLES, WHERE APPLICABLE, ARE UNPLATED.
  - 9  $\varnothing 1.151 \pm 0.025$  DRILLED HOLES PLATED WITH  
0.008 MIN SnPb OR Sn OVER .001 [0.03]  
TO 0.08 Cu PLATING TO ACHIEVE  
 $\varnothing 1.02 \pm .07$  HOLE.
  - 10 "DIM XXX" TO BE DETERMINED BY THE CUSTOMER.
  - 11 CONNECTOR KEEP-OUT ZONE.
  - 12. FOR PRESS FIT APPLICATION USE FCI CAM TOOL 430169-XXX.

mat'l code				tolerances unless otherwise specified		CUSTOMER			
ltr	ecn no.	dr	date	linear	0.X ± 0.5	COPY		www.fciconnect.com	
A					0.XX ± 0.25	projection	title 9P + 24S VERTICAL PRESS-FIT HEADER		
				angles	0.XXX ± 0.1				
					0° + 2°		product family	PwrBlade	code
				dr	Warren Du 12/18/08	scale	size	dwg no	213
				engr	Warren Du 12/18/08	1:1	A	51952-142	sheet
				chr	Gary Hsieh 12/18/08				4 of 4
				appd	JOSEPH HSIA 12/18/08				
sheet index	revision sheet								

cage code 22526