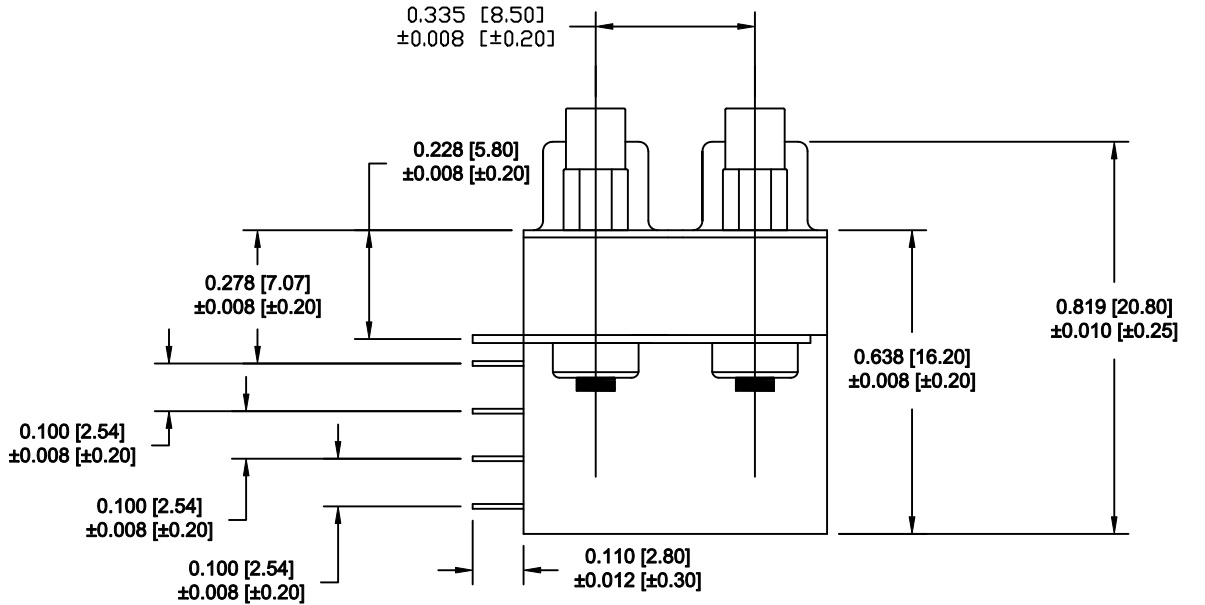
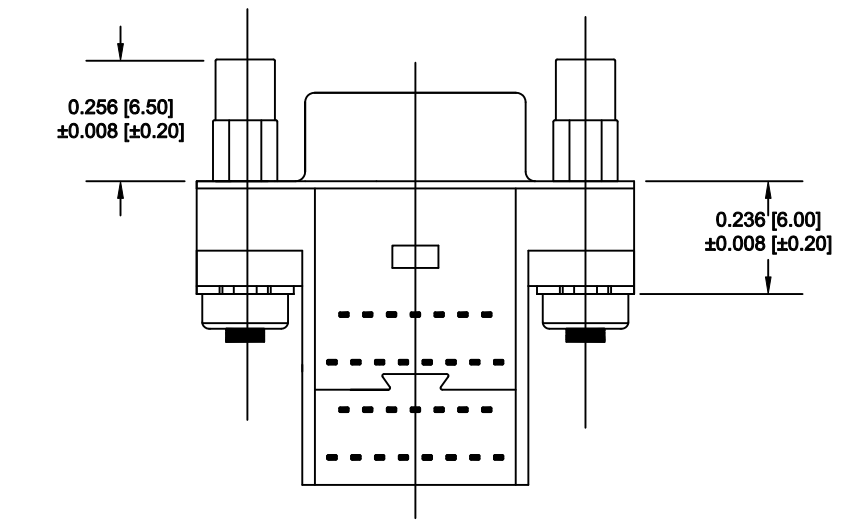
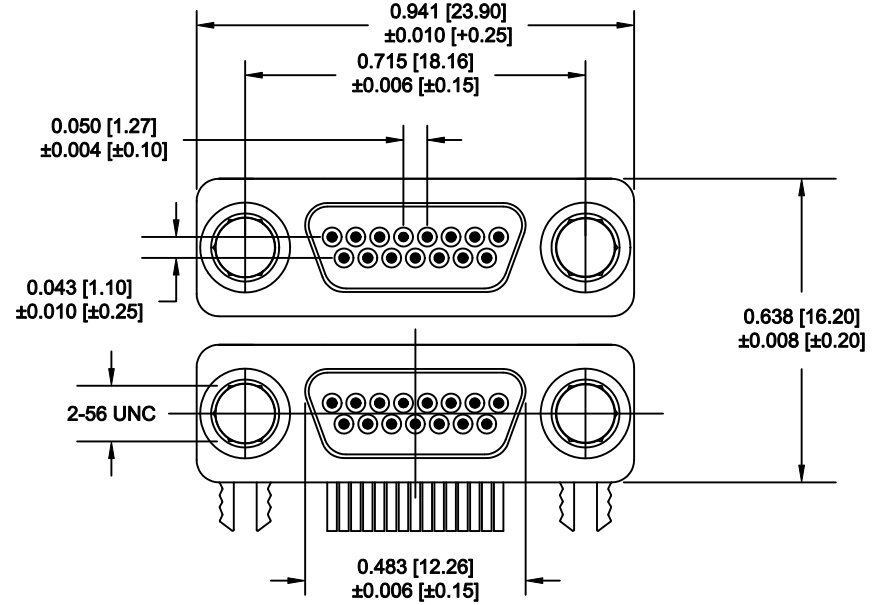


DESCRIPTION: MICRO D-SUB - MALE - RIGHT ANGLE - DUAL PORT



ELECTRICAL

CONTACT CURRENT RATING: 1 AMP
 DIELECTRIC WITHSTANDING VOLTAGE: 500 VAC
 INSULATION RESISTANCE: 1000 MOhms MIN.
 CONTACT RESISTANCE: 45 MILLI Ohms MAX.
 OPERATING TEMPERATURE: -55°C TO +85°C

MATERIALS

CONTACTS: COPPER ALLOY
 INSULATOR: THERMOPLASTIC 94V-0
 SHELL: COLD ROLLER STEEL


FINISHES

CONTACT: 15 μ" MIN. GOLD ON MATING END
 TIN ON TERMINATION END
 ALL UNDERPLATING NICKEL
 SHELL: BRIGHT TIN OVER COPPER

HARDWARE

2-56 THREADED STANDOFF
 2.5 IN-LBS TORQUE MAX.

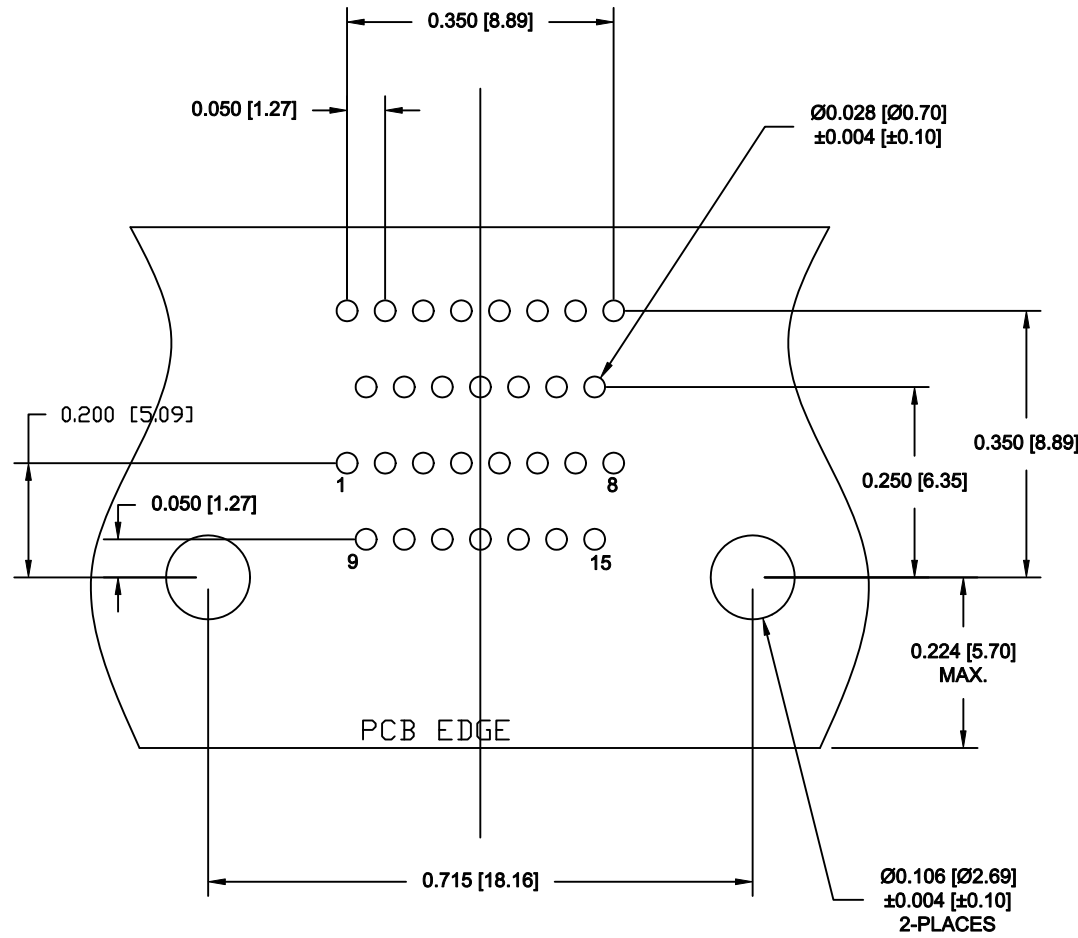
DO NOT SCALE FROM DRAWING

	THESE DRAWINGS AND SPECIFICATIONS ARE THE PROPERTY OF NorComp AND SHALL NOT BE REPRODUCED, COPIED OR USED AS THE BASIS FOR THE MANUFACTURE OF SALE OF APPARATUS WITHOUT WRITTEN PERMISSION.	DRAWN: M. SIGMON	DATE: 08-26-11
		CHECKED:	DATE:

RoHS COMPLIANT

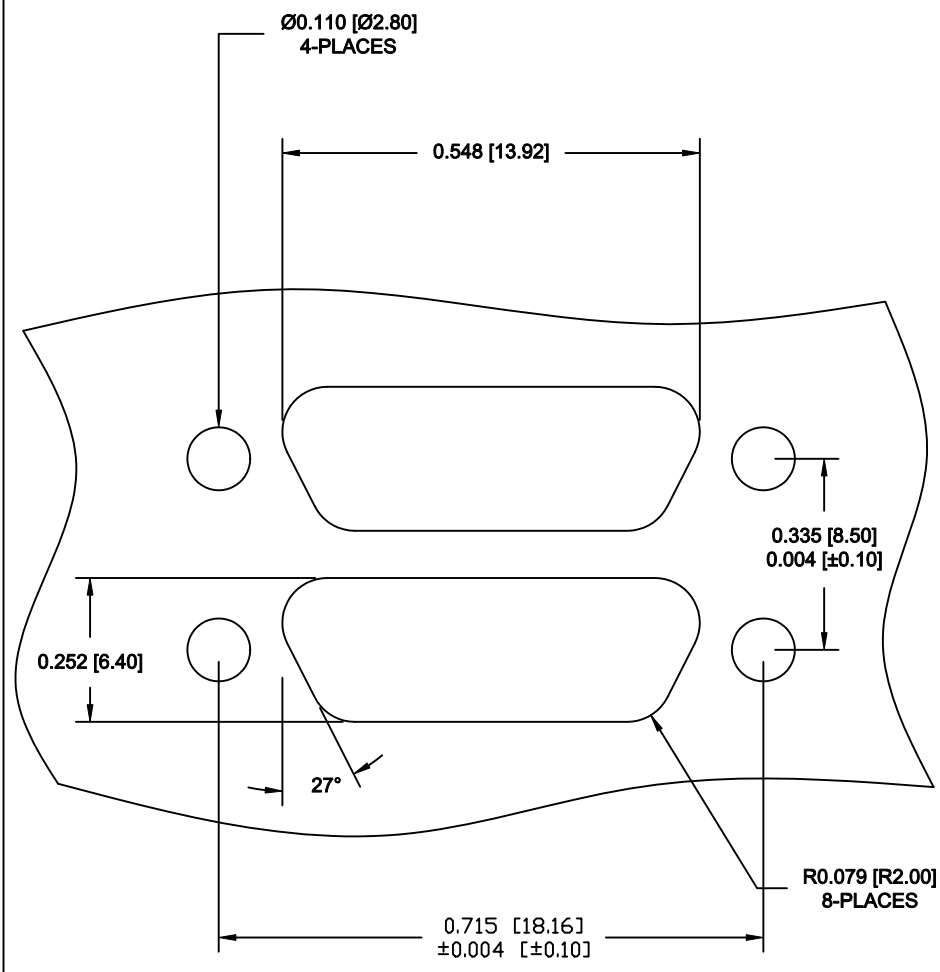
NorComp

SCALE: 2.5 : 1	SHEET 1	OF 2	REV 1
DWG NO. 382-015-112L565			



RECOMMENDED PC BOARD LAYOUT
(30 POSITION ONLY) TOLERANCE ± 0.002 [± 0.05]

PANEL CUTOUT



PANEL CUTOUT
TOLERANCE ± 0.002 [± 0.05]

DO NOT SCALE FROM DRAWING

RoHS COMPLIANT

NC
THESE DRAWINGS AND SPECIFICATIONS ARE THE PROPERTY OF NorComp AND SHALL NOT BE REPRODUCED, COPIED OR USED AS THE BASIS FOR THE MANUFACTURE OF SALE OF APPARATUS WITHOUT WRITTEN PERMISSION.

NorComp

DRAWN: M. SIGMON		DATE: 08-26-11	
CHECKED:		DATE:	
SCALE: 4 : 1	SHEET 2	OF 2	REV 1
DWG NO.		382-015-112L565	