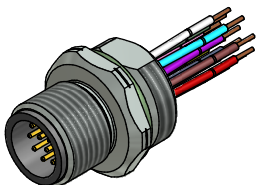


Contact assignment:

- | | |
|------------|----------------|
| 1 - brown | 7 - black |
| 2 - blue | 8 - grey |
| 3 - white | 9 - red |
| 4 - green | 10 - violet |
| 5 - pink | 11 - grey-pink |
| 6 - yellow | 12 - red-blue |



Technical specification :

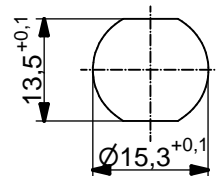
Rated voltage: IEC 61076-2-101	30 V
Current rating: IEC 61076-2-101	1,5 A at 40°C
Insulation resistance: IEC 60512	>=100 MΩ
Pollution degree: IEC 60664-1	3/2
Degree of protection: IEC 60529	IP 67, in mated condition
Temperature range:	-30°C ... +80°C
Mating cycles: IEC 60512-9a	>=100

Materials:

Contact:	CuZn
Contact plating:	Nickel, gold plated
Contact carrier:	PBT GF, UL 94
Sealing:	FPM
Socket housing:	CuZn, nickel plated
Grouting:	Polyurethane-resin, UL 94

Installation specification:

recommended torque:	1-1,2 Nm
Conec installation tool:	Torque wrench: 36-000200 Insert across flats 17: 36-000230



Minimum wall thickness 1,5mm,
alternativ panel cut-out d=15,3

Part no:	Description:	Pos	Length L:	Wire:
43-01346	SAL - 12 - FS12 - 0,5 - 9	12	0,5m	AWG 26 PVC, UL
43-xxxxx	SAL - 12 - FS12 - ... - 9	12	x	

DO NOT ALTER CAD DRAWING BY HAND Directive 2002/95/EC RoHS compliant	Index: e, 11.03.14 rbo - Ä5125 Data sheet revised, numbers of contacts in view A corrected	dim. in mm	title: Male socket M12x1 wir wire, frontmounting, PG9		
	tolerance of wire: L ≤ 0,5m: L + 20mm L > 0,5m: L + 4%		date drawn 20.10.08 appd. 20.10.08	name Fromm Mankopf	dwg no: 43K1A778
	general tolerance: 0 ± 0,50mm 0,0 ± 0,25mm 0,00 ± 0,10mm			part no: see table	
	<small>THIS DRAWING MAY NOT BE COPIED OR REPRODUCED IN ANY WAY, AND MAY NOT BE PASSED ON TO A THIRD PARTY WITHOUT WRITTEN PERMISSION. OWNERSHIP AND COPYRIGHT OF CONEC GmbH</small>				