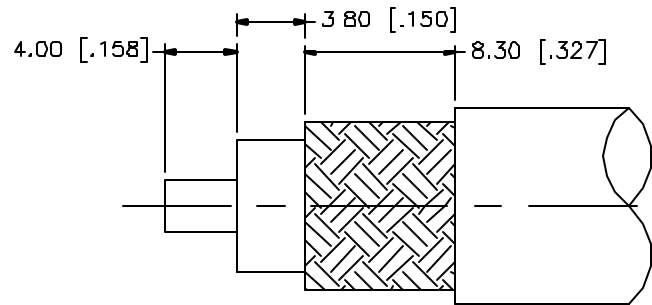
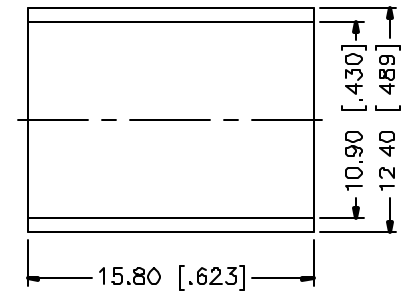
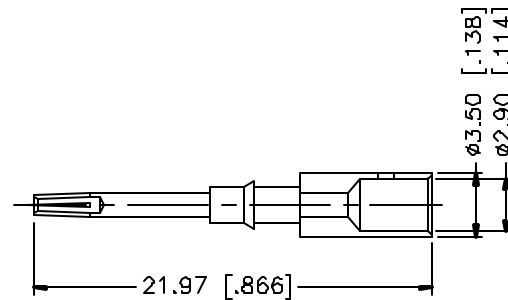
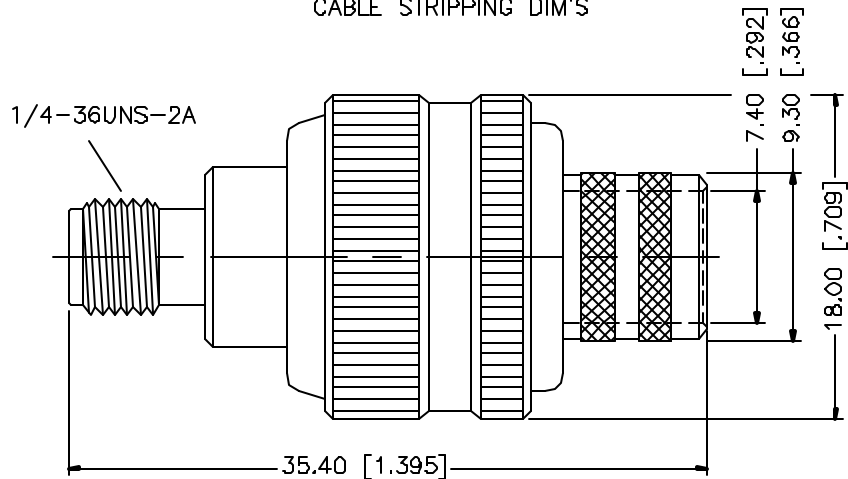


REV.	DATE	DESCRIPTION
NC	07/16/01	INITIAL RELEASE




RECOMMENDED
CABLE STRIPPING DIM'S



CRIMP NOTES:

1. CRIMPED FERRULE
HEX CRIMP SIZE .429"
2. CRIMPED CONTACT PIN
HEX CRIMP SIZE .118"

DESCRIPTION	MATERIAL	FINISH	UNLESS OTHERWISE SPECIFIED DIMENSIONS ARE IN MILLIMETERS	APPROVALS	DATE							
1	BODY	BRASS	GOLD	DRAWN	G.R.S.					07/16/01	TITLE SMA CRIMP JACK (FOR BELDEN 9913, 9914, LMR-400)	
2	INSULATOR	TEFLON	NATURAL	CHECKED			SIZE A					
3	CONTACT PIN	BRASS	GOLD	ISSUED							FSCM NO. 99001	
4	FERRULE	COPPER	GOLD	UNLESS OTHERWISE SPECIFIED TOLERANCES FOR MILLIMETERS ARE: 0.5-6 = ± 0.2 8-30 = ± 0.4 30-120 = ± 0.6 120-315 = ± 1 315-1000 = ± 1.6 1000-2000 = ± 2.4			SCALE NA		PART NO. 132332		SHEET 1 OF 1	
5				DIMENSIONS IN [] ARE IN INCHES FOR CUSTOMER REFERENCE ONLY			DO NOT SCALE DRAWING					
6												
7												
8												