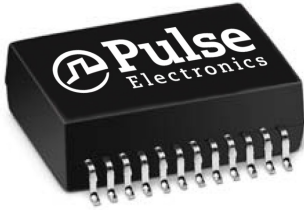


# T1/E1/CEPT/ISDN-PRI INTERFACE MODULES

Four Transformer Modules for Dual SMT  
T1/E1 Ports, Extended Temperature Range



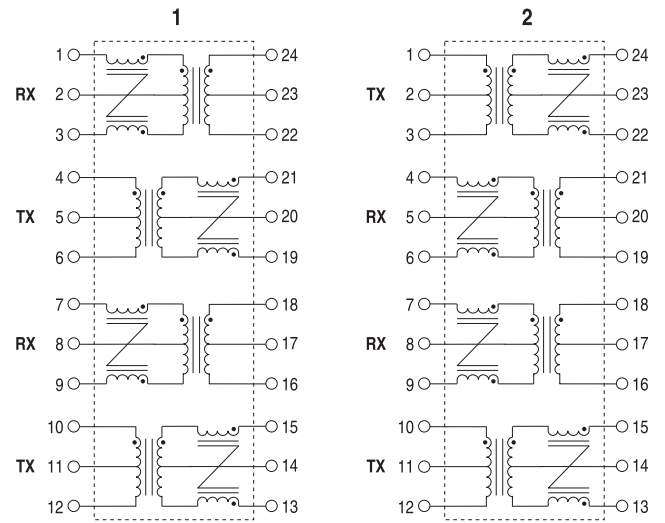
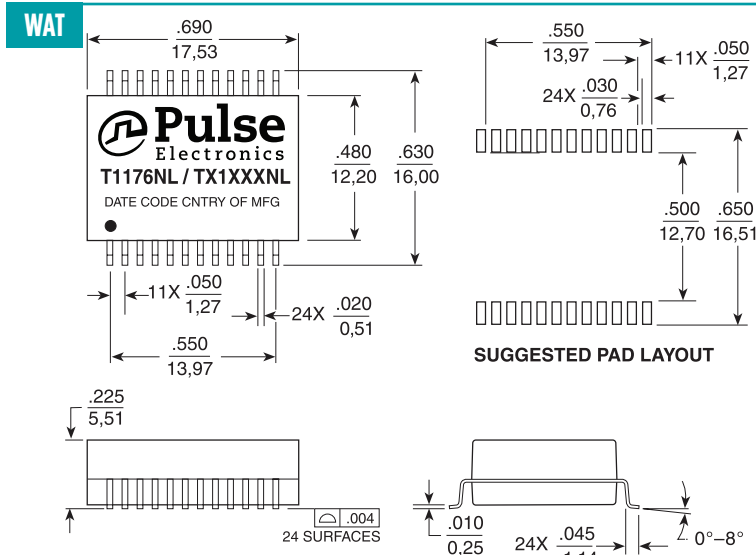
- RoHS peak reflow temperature rating 245°C
- Optimized for enhanced EMC performance
- SMT Dual Port package contains transformers with optional common mode chokes on both transmit and receive channels
- Models matched to leading transceiver ICs
- Patented Interlock Base construction for high-reliability
- Recognized to UL 1950
- Isolation Voltage: 1500 Vrms

Electrical Specifications @ 25°C									
RoHS Compliant Part Number		Turns Ratio (Pri: Sec ± 2%)		Secondary OCL @ 25°C (mH MIN)	Cw/w (pF MAX)	DCR Pri (Ω MAX)	Package/Schematic	Primary Pins	
w/CMC	wo/CMC	Transmit	Receive					Transmit	Receive
EXTENDED TEMPERATURE RANGE MODELS - OPERATING TEMPERATURES -40°C TO +85°C									
T1176NL	-	1CT:2.4CT	1CT:1CT	1.20	35	.80	WAT/2	1-3 & 10-12	21-19 & 18-16
TX1192NL	-	1CT:2.42CT	1CT:2.42CT	1.20	25	.80	WAT/1	4-6 & 10-12	1-3 & 7-9
TX1193NL	TX1323NL	1CT:2CT	1CT:1CT	1.20	35	.80	WAT/1	4-6 & 10-12	24-22 & 18-16

- Notes:**
- Extended Temperature Range Models** - For extended temperature range transformers (-40°C to +85°C operating temperature range), OCL (Open Circuit Inductance) is specified at both -40°C and +25°C. At -40°C, OCL is 600 μH minimum. All other parameters are specified at +25°C only.
  - Turns ratio** is specified primary: secondary (CT = Center Tap).
  - Standard packaging** for the surface mount package is anti-static tubes. Optional Tape & Reel can be ordered by adding a "T" suffix to the part number, (i.e T1176NLT).

## Mechanical

## Schematics



Weight .....3.8 grams  
Tape & Reel .....175/reel  
Tray .....105/tray

Dimensions:  $\frac{\text{Inches}}{\text{mm}}$  Unless otherwise specified, all tolerances are  $\pm \frac{.010}{0,25}$

USA 858 674 8100

Germany 49 7032 7806 0

Singapore 65 6287 8998

Shanghai 86 21 62787060

China 86 755 33966678

Taiwan 886 3 4356768

# T1/E1/CEPT/ISDN-PRI INTERFACE MODULES

Four Transformer Modules for Dual SMT  
T1/E1 Ports, Extended Temperature Range

## Application Notes

- 1. Flammability** - Materials used in these products are recognized as UL94-VO approved. Products meet the requirements of IEC 695-2-2 (Needle Flame Test).
- 2. Balance Characteristics** - The transformers meet the requirements for longitudinal balance of FCC part 68.
- 3. Common Mode Rejection Ratio** - the CMRR for all transformers is better than 50 dB at 1 MHz.
- 4. Crosstalk Attenuation** - In the packages which contain transmit and receive transformers side by side, sufficient crosstalk attenuation is achieved by the inherent characteristics of the toroid cores as well as by their proper positioning. The crosstalk attenuation is typically 65 dB or better.
- 5. Return Loss** - ITU-T G703 and the European national regulatory documents specify minimum return loss levels. The transformers will allow these limits to be complied within the situations where they are applicable.

Frequency	50-100 KHz	100KHz-2 MHz	2-3 MHz
Return Loss			
XMIT	9 dB	15 dB	11 dB
RCV	12 dB	18 dB	14 dB

- 6. General information** - The transformers are specifically designed for use in 1.544 Mbps (T1), 2.048 Mbps (CEPT) and ISDN Primary Rate Interface (PRI) applications. They are matched to the majority of the line interface transceiver ICs currently available. Use of the proper transformer allows the interface circuit to comply with ITU-T G.703 and other standards regarding pulse waveform, return loss, and balance.

## For More Information

### Pulse Worldwide Headquarters

12220 World Trade Drive  
San Diego, CA  
92128  
U.S.A.

Tel: 858 674 8100  
Fax: 858 674 8262

### Pulse Europe

Einsteinstrasse 1  
D-71083 Herrenberg  
Germany

Tel: 49 7032 78060  
Fax: 49 7032 7806 135

### Pulse China Headquarters

B402, Shenzhen Academy of  
Aerospace Technology Bldg.  
10th Kejinan Road  
High-Tech Zone  
Nanshan District  
Shenzhen, PR China  
518057  
Tel: 86 755 33966678  
Fax: 86 755 33966700

### Pulse North China

Room 2704/2705  
Super Ocean Finance  
Ctr.  
2067 Yan An Road  
West  
Shanghai 200336  
China

Tel: 86 21 62787060  
Fax: 86 2162786973

### Pulse South Asia

135 Joo Seng Road  
#03-02  
PM Industrial Bldg.  
Singapore 368363

Tel: 65 6287 8998  
Fax: 65 6287 8998

### Pulse North Asia

3F, No. 198  
Zhongyuan Road  
Zhongli City  
Taoyuan County 320  
Taiwan R. O. C.  
Tel: 886 3 4356768  
Fax: 886 3 4356823 (Pulse)  
Fax: 886 3 4356820 (FRE)

Performance warranty of products offered on this data sheet is limited to the parameters specified. Data is subject to change without notice. Other brand and product names mentioned herein may be trademarks or registered trademarks of their respective owners. © Copyright, 2012. Pulse Electronics, Inc. All rights reserved.