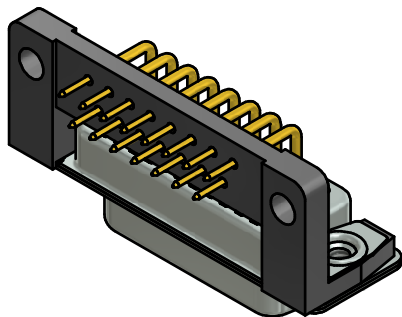
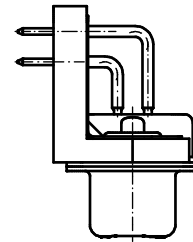
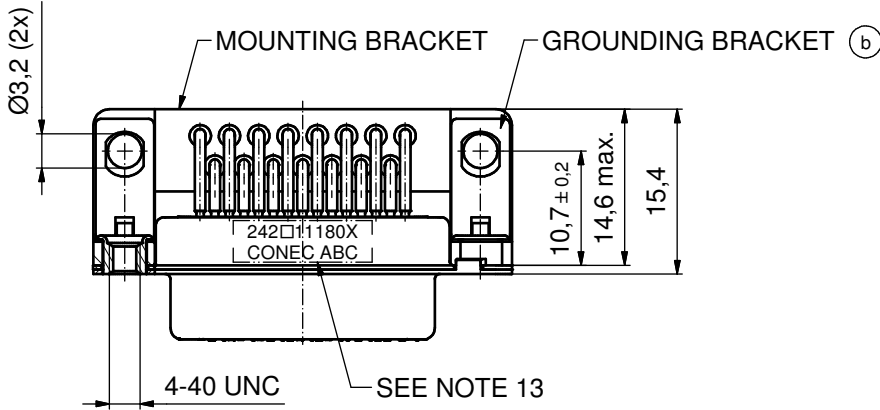


(5:1)



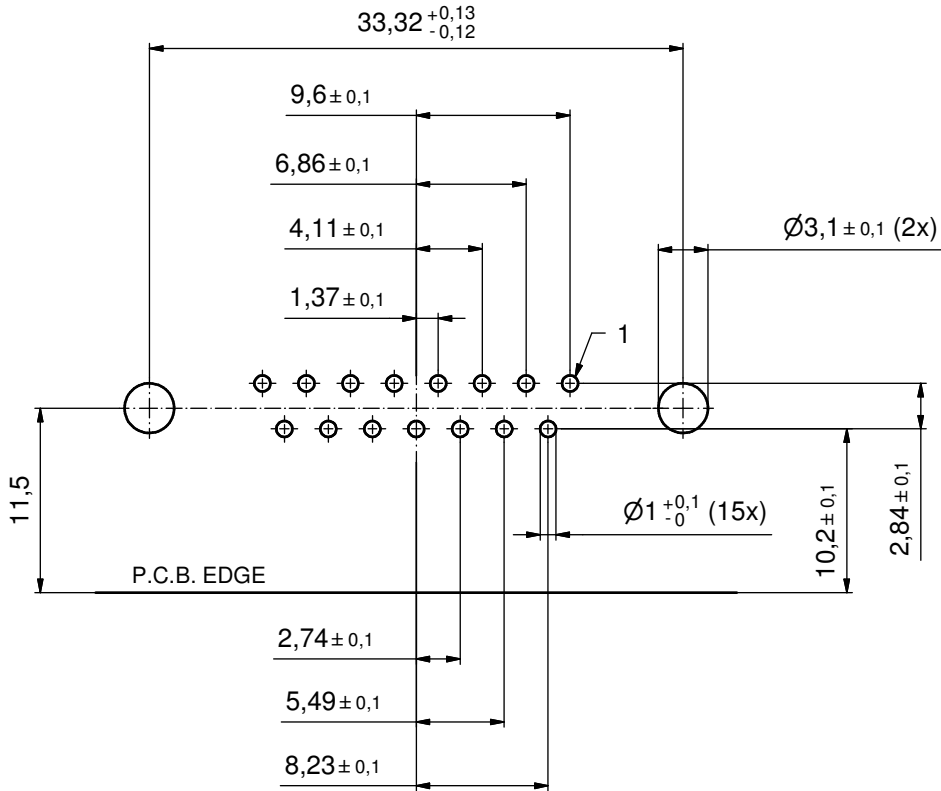
NOTES:

1. RoHS COMPLIANT
2. SUITABLE FOR REFLOW SOLDERING (SOLDER BATH TEMPERATURE 260°C FOR 5 SEC AND SOLDER PREHEAT 100°C FOR 30 SEC.)
3. METALSHELLS: STEEL; min. 315µin TIN over 40-80µin NICKEL
4. INSULATORS: HIGH TEMPERATURE PLASTIC UL 94 V-0, BLACK
5. CONTACTS: COPPER ALLOY; PLATING (SEE PART.):
 - PLEASE ADD A for GOLD FLASH over NICKEL (PREFERRED TYPE)
 - PLEASE ADD B for 20µin HARD GOLD over min. 50µin NICKEL
 - PLEASE ADD C for 30µin HARD GOLD over min. 50µin NICKEL
- CONTACT TAILS PRETINNED
6. MOUNTING BRACKET: HIGH TEMPERATURE PLASTIC UL 94 V-0; BLACK
7. THREADED INSERTS: COPPER ALLOY; min. 200µin TIN over 80µin NICKEL
8. GROUNDING BRACKETS: COPPER ALLOY; TIN PLATED
9. CAPACITANCE: 830pF±20%
10. DIELECTRIC WITHSTANDING VOLTAGE: 424 VDC
11. P.B.C. HOLE DRILLINGS ON SHEET 2
12. MAXIMUM TORQUE VALUE FOR THREAD: 6 in.LB
13. CONNECTOR IS PART MARKED: 242□11180X CONEC ABC

Directive 2002/95/EC RoHS compliant

| | | | | | | |
|--|-------------|------------|-------|--------------------------------------|--------------|--|
| THIS DRAWING MAY NOT BE COPIED OR REPRODUCED IN ANY WAY, AND MAY NOT BE PASSED ON TO A THIRD PARTY WITHOUT WRITTEN PERMISSION. OWNERSHIP AND COPYRIGHT OF CONEC GmbH DO NOT ALTER CAD DRAWING BY HAND | | | | tolerance | | scale: 2:1 (5:1) |
| | | | | dim. in mm | | material: see notes |
| | | | | date | name | title: |
| | | | | drawn 04.02.06 | Schwenkler | D-SUB FILTER FEMALE 90° 15pos. SOLDER PIN ANGLED 0.370inch threaded insert, mounting bracket, grounding clip |
| | | | | appd. 04.02.06 | Lehmenkühler | |
| | | | norm | | dwg no: | |
| | | | d-old | 24K1A951 | DIN-A3 | |
| 5 x b | A4636 | 04.02.2013 | K.H. | CONEC [®] | | sh: 1/2 |
| a | Original | | | | | part no: 24K1A1425 (b) |
| rev. | description | date | name | part no: (b) 242□11180X (see note 5) | | |

P.C.B. HOLE DRILLINGS
(P.C.B. TOP SIDE)



| | | | | | | | |
|--|------|-------------|------|------|----------------------|----------|---|
| THIS DRAWING MAY NOT BE COPIED OR REPRODUCED IN ANY WAY, AND MAY NOT BE PASSED ON TO A THIRD PARTY WITHOUT WRITTEN PERMISSION. OWNERSHIP AND COPYRIGHT OF CONEC GmbH DO NOT ALTER CAD DRAWING BY HAND | | | | | tolerance | | scale: 3:1 |
| | | | | | dim. in mm | | material: SEE SHEET 1 |
| | rev. | description | date | name | drawn | date | name |
| | a | Original | | | 04.02.06 | 04.02.06 | Schwenkler |
| | | | | | appd. | | Lehmenkühler |
| | | | | | norm | | |
| | | | | | d-old | 24K1A951 | |
| | | | | | | | title: P.C.B. HOLE DRILLINGS D-SUB FILTER MALE 90° 15pos., 0.370inch threaded insert, mounting bracket,grounding clip |
| | | | | | | | dwg no: 24K1A1425 |
| | | | | | part no: SEE SHEET 1 | | |