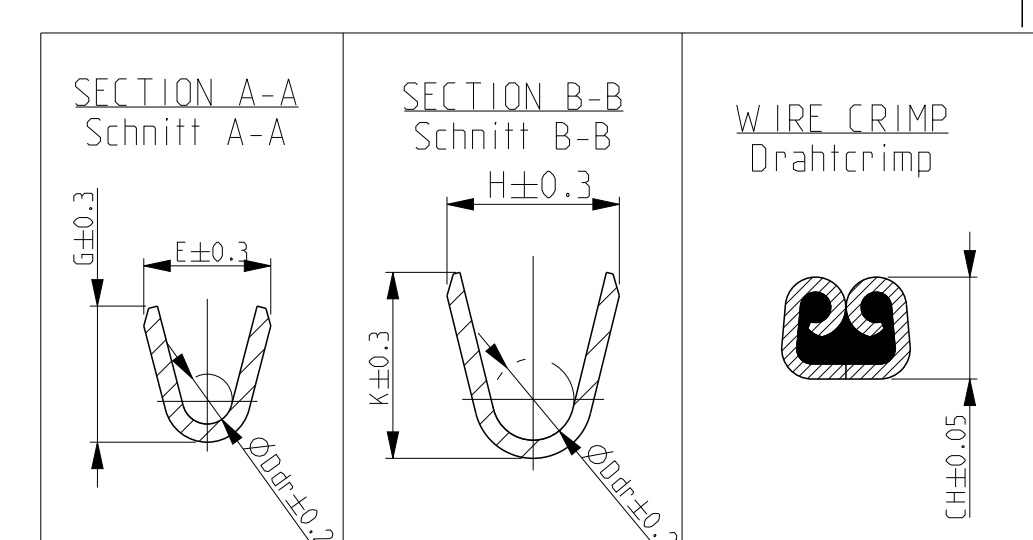
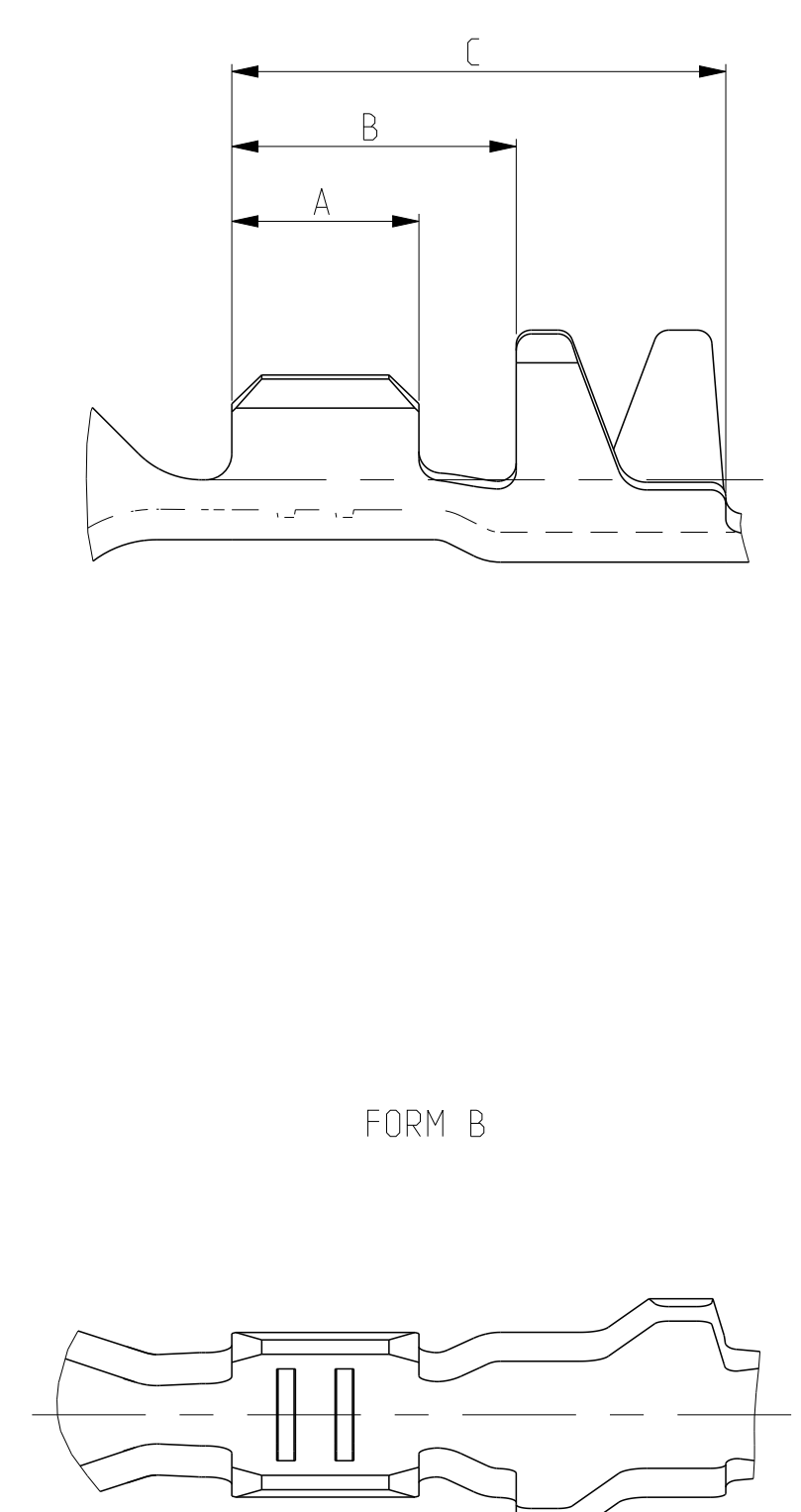
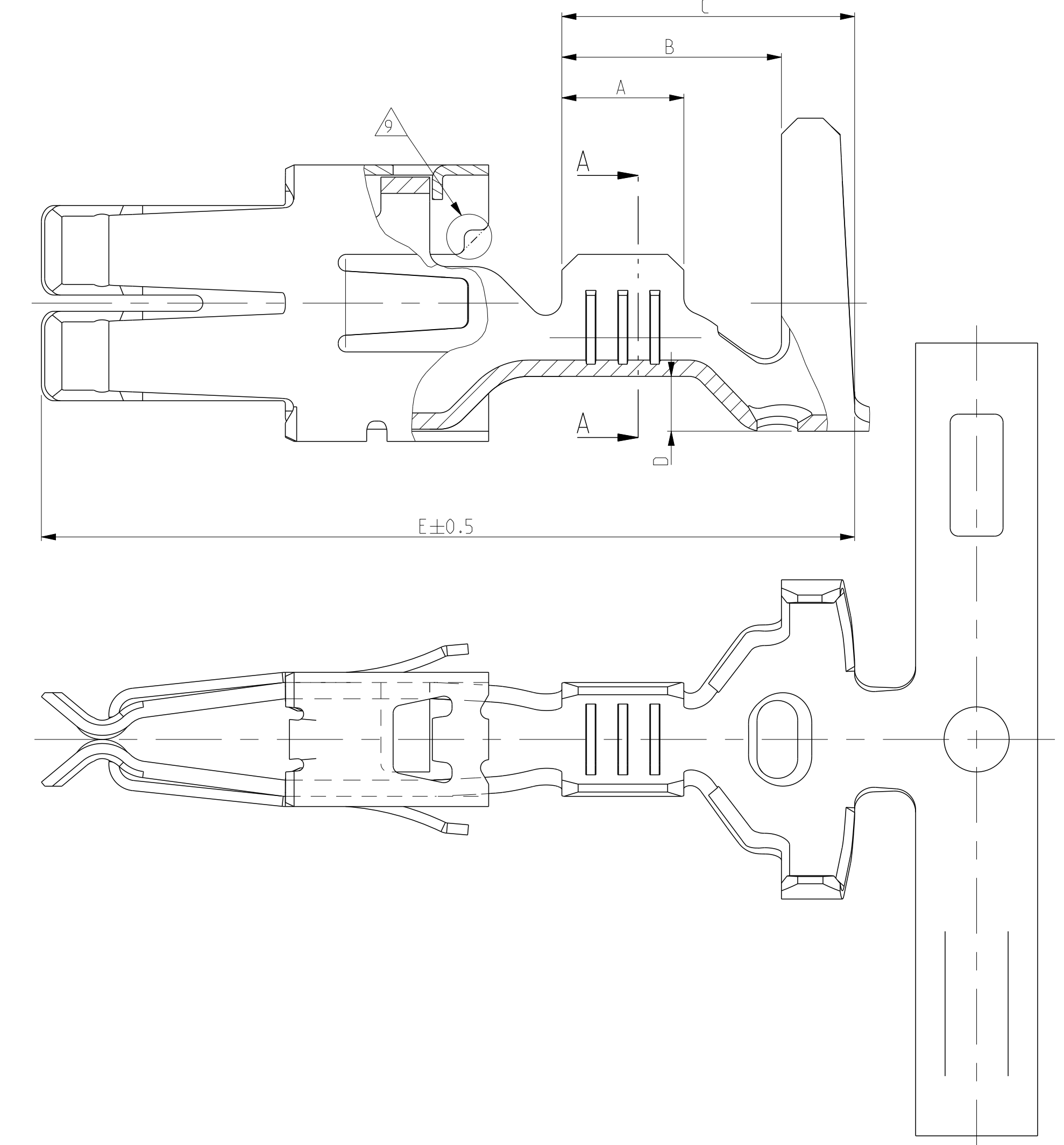


CONTACTS FOR FLR AND FLK CABLES  
Kontakte fuer flr und FLK-Leitung

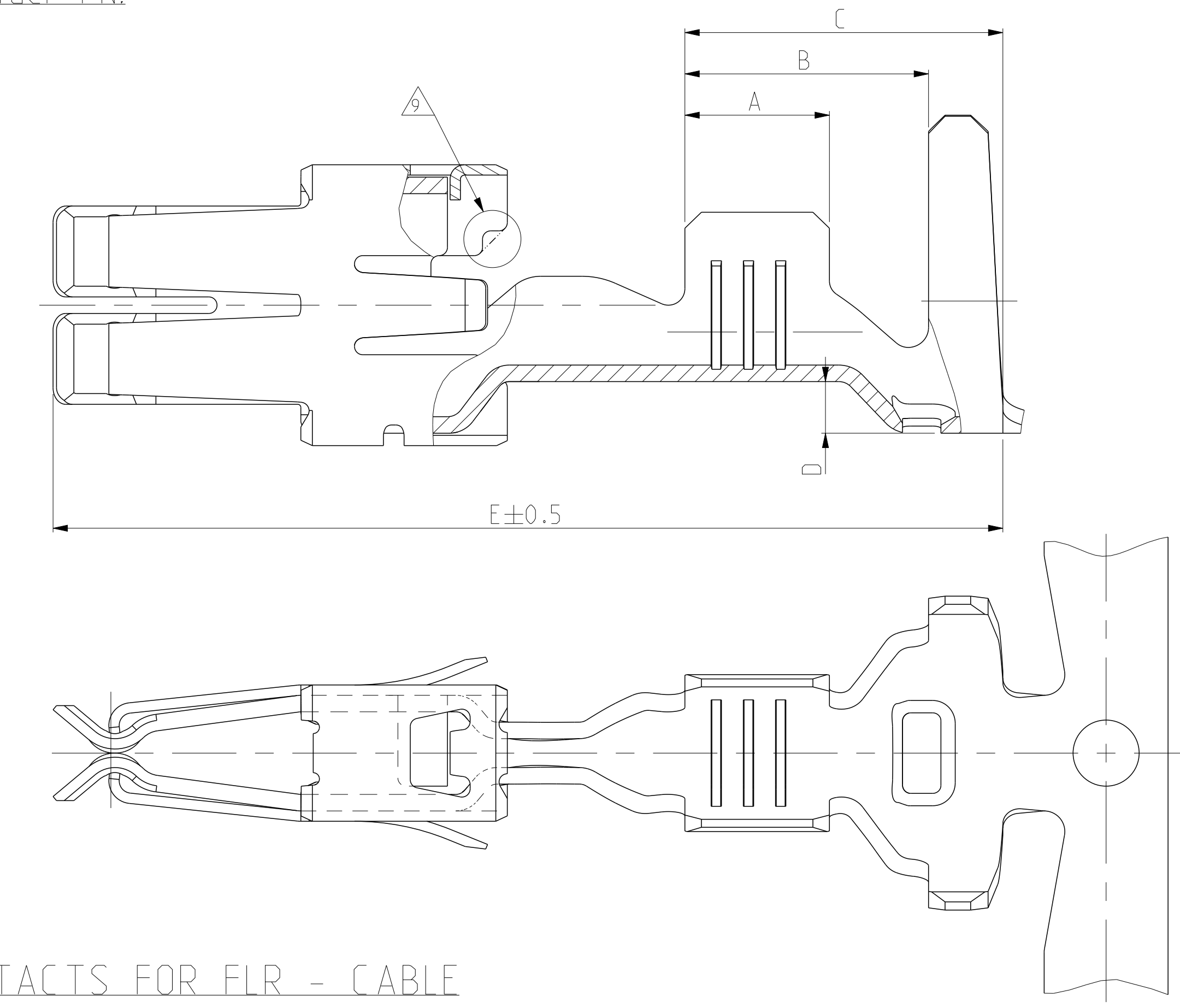


CONTACTS FOR SINGLE WIRE SEALING SYSTEM: FLR- AND FLK- CABLE  
Kontakte fuer Einzel - Dichtung - System: FLR- UND FLK - Leitung



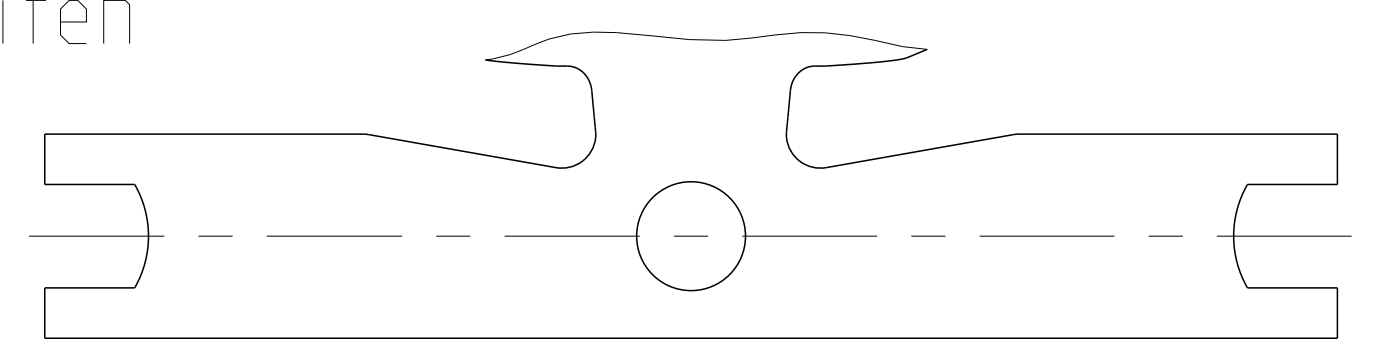
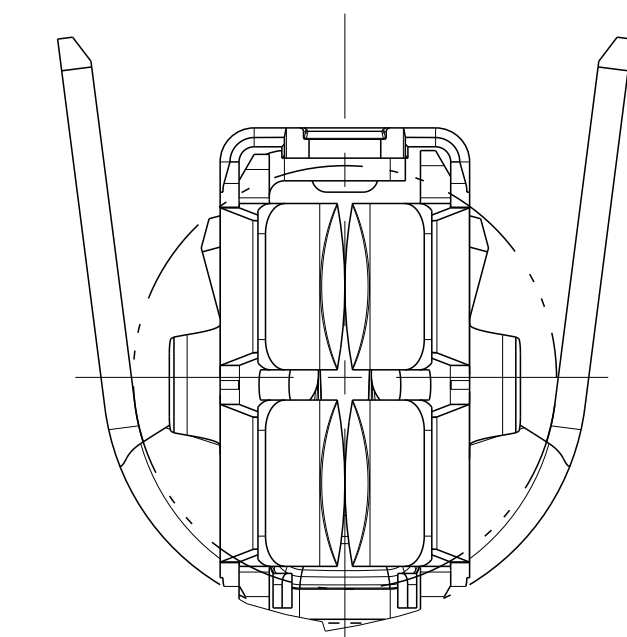
DIMENSIONS SEE FIGURE CONTACTS FOR FLR - CABLE  
Masse siehe Darstellung der Kontakte fuer FLR -Leitung

ONLY FOR PN: 968035, 968037 and 1670426  
Nur fuer PN:



CARRIERSTRIP  
Traegerstreifen

ONLY FOR PIN : 964330 , 964332 , 964334 , 968035 and 968037  
Nur fuer PN:



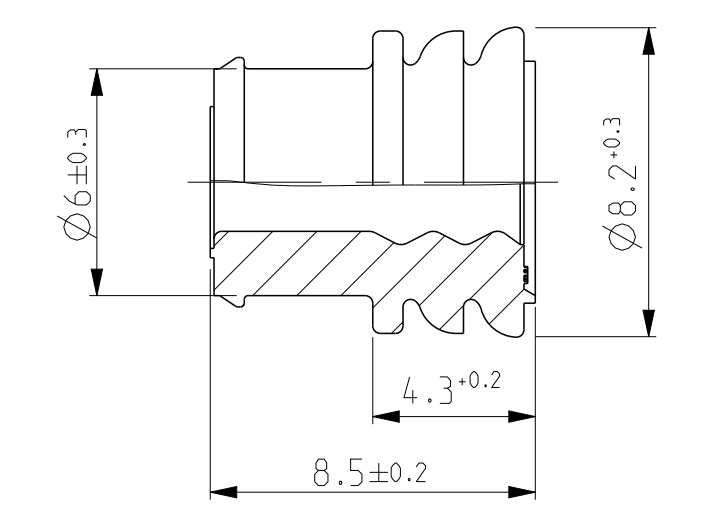
REV	WIRE RANGE Drahtgroessen Bereich (mm²)	INSULATION Isolations Ø (mm)	MATERIAL Werkstoff	SURFACE Oberflaeche	LENGTH Laenge	WIRE CRIMP Drahtcrimp	INSULATION CRIMP Isolationscrimp	CRIMP HEIGHT (CH) Crimp - Hoehe	ORDER- NO. Bestell-Nr	CRIMP DATA AND CRIMP TOOL Crimpdata u. Crimpwerkzeuge
11	4.0 - 6.0 INCL. AWG 10	3.6 - 5.1 (SEAL)	CuNiSi		A=4.30 B=5.90 C=8.30 D=1.45 E=20.0	E = 5.30 G = 5.60 D <sub>cr</sub> = 2.90	H = 8.15 K = 8.00 D <sub>150</sub> = 6.00	5.00mm² = 2.36 6.00mm² = 2.55 PRELIMINARY vortlaufig	1-1670426-6	
B	2.5 - 4.0	3.4 - 3.7	CuSn4		A=4.00 B=5.90 C=7.70 D=1.25 E=23.0	E = 4.60 G = 4.80 D <sub>cr</sub> = 2.40	H = 7.60 K = 7.70 D <sub>150</sub> = 5.60	4.00mm² = 2.35 3.00mm² = 2.13	2-968037-4	
B	1.0 - 2.5	2.7 - 3.7	CuSn4		A=3.50 B=5.90 C=7.70 D=1.25 E=23.0	E = 3.80 G = 4.10 D <sub>cr</sub> = 1.60	H = 7.60 K = 7.70 D <sub>150</sub> = 5.60	1.50mm² = 1.76 2.00mm² = 1.90 2.50mm² = 2.04	0-968037-2 2-968035-4 0-968035-2	
B	2.5 - 4.0	3.4 - 4.5	CuFe2		A=4.00 B=5.90 C=7.70 D=1.25 E=20.0	E = 4.60 G = 4.80 D <sub>cr</sub> = 2.40	H = 7.80 K = 7.80 D <sub>150</sub> = 5.70	3.00mm² = 2.13 4.00mm² = 2.35	1-964334-5 1-964332-5	
B	1.0 - 2.5	2.2 - 3.7	CuFe2		A=3.50 B=5.90 C=7.70 D=1.25 E=20.0	E = 3.80 G = 4.00 D <sub>cr</sub> = 1.70	H = 7.80 K = 7.80 D <sub>150</sub> = 5.70	1.50mm² = 1.76 2.00mm² = 1.90 2.50mm² = 2.04	964332-5 1-964332-2 1-964332-1	
B	0.5 - 1.0	1.4 - 2.7	CuFe2		A=3.00 B=5.40 C=7.20 D=1.25 E=20.0	E = 2.80 G = 3.00 D <sub>cr</sub> = 1.10	H = 7.70 K = 7.70 D <sub>150</sub> = 5.50	0.50mm² = 1.43 0.75mm² = 1.52 1.00mm² = 1.61	1-964330-2 1-964330-1 1-969044-5	
B	2.5 - 4.0	3.4 - 4.5	CuFe2		A=4.00 B=5.90 C=7.70 D=1.45 E=20.0	E = 4.60 G = 4.80 D <sub>cr</sub> = 2.40	H = 8.15 K = 8.00 D <sub>150</sub> = 6.00	4.00mm² = 2.35	969044-5 969044-1	
B	1.0 - 2.5	2.2 - 3.7	CuFe2		A=3.50 B=5.90 C=7.70 D=1.45 E=20.0	E = 3.80 G = 4.00 D <sub>cr</sub> = 1.70	H = 8.15 K = 8.00 D <sub>150</sub> = 5.70	2.50mm² = 2.04 2.00mm² = 1.90 1.50mm² = 1.76	969042-1	
B	0.5 - 1.0	1.4 - 2.7	CuFe2		A=3.00 B=5.40 C=7.20 D=1.35 E=20.0	E = 2.80 G = 3.00 D <sub>cr</sub> = 1.10	H = 7.85 K = 7.70 D <sub>150</sub> = 5.50	1.00mm² = 1.61 0.75mm² = 1.52 0.50mm² = 1.43	969040-1	
B	2.5 - 4.0	3.3 - 4.5	CuFe2		A=4.00 B=5.20 C=6.80 D=0.60 E=19.50	E = 4.60 G = 4.80 D <sub>cr</sub> = 2.40	H = 6.40 K = 6.70 D <sub>150</sub> = 4.00	3.00mm² = 2.13 3.50mm² = 2.24 4.00mm² = 2.35	964328-5 964328-1	
C	1.0 - 2.5	2.2 - 3.0	CuFe2		A=3.50 B=4.70 C=6.30 D=0.40 E=19.50	E = 3.80 G = 4.00 D <sub>cr</sub> = 1.70	H = 4.70 K = 4.90 D <sub>150</sub> = 2.60	1.50mm² = 1.76 2.00mm² = 1.90 2.50mm² = 2.04	964326-5	
B	0.5 - 1.0	1.4 - 2.1	CuFe2		A=3.00 B=4.20 C=5.80 D=0.40 E=19.50	E = 2.80 G = 3.00 D <sub>cr</sub> = 1.10	H = 3.80 K = 4.10 D <sub>150</sub> = 1.80	0.50mm² = 1.43 0.75mm² = 1.52 1.00mm² = 1.61	964324-1	
B	0.2 - 0.5	1.15 - 1.6	CuFe2		A=2.50 B=3.80 C=6.60 D=0.30 E=19.50	E = 2.20 G = 2.20 D <sub>cr</sub> = 0.80	H = 3.10 K = 3.10 D <sub>150</sub> = 1.40	0.20mm² = 1.13 0.25mm² = 1.15 0.35mm² = 1.19 0.50mm² = 1.26	964322-1	

REV	WIRE RANGE Drahtgroessen Bereich (mm²)	INSULATION Isolations Ø (mm)	MATERIAL Werkstoff	SURFACE Oberflaeche	LENGTH Laenge	WIRE CRIMP Drahtcrimp	INSULATION CRIMP Isolationscrimp	CRIMP HEIGHT (CH) Crimp - Hoehe	ORDER- NO. Bestell-Nr	CRIMP DATA AND CRIMP TOOL Crimpdata u. Crimpwerkzeuge
11	4.0 - 6.0 INCL. AWG 10	3.6 - 5.1 (SEAL)	CuNiSi		A=4.30 B=5.90 C=8.30 D=1.45 E=20.0	E = 5.30 G = 5.60 D <sub>cr</sub> = 2.90	H = 8.15 K = 8.00 D <sub>150</sub> = 6.00	5.00mm² = 2.36 6.00mm² = 2.55 PRELIMINARY vortlaufig	1-1670426-6	

SEE APPLICATION SPECIFICATION  
siehe Verarbeitungsspezifikation

- △ ACCORDING INSULATION Ø IS TO CHOOSE THE SINGLE WIRE SEAL ATTENTION: DIFFERENT HOUSING CAVITY DIAMETER ARE POSSIBLE. PLEASE NOTICE APPROPRIATE HOUSING PRODUCT SPECIFICATION !  
Entsprechend dem Isolationsdurchmesser ist die Einzel- Dichtung auszuwaehlen  
Achtung: Verschiedene Gehaeuse- kammer- Durchmesser moeglich. Bitte entsprechende Gehaeuse- Product- Spezifikation beachten !
- △ ADDITIONAL CUSTOMER-SPECIFIC SEAL EXISTING  
Weitere kundenspezifische Einzeldichtung vorhanden
- △ BODY ELECTRO TIN PLATED OVER NICKEL 0.2µm min.  
Kontaktkoerper : gal. verzinkt ueber Nickel 0.2µm min.  
CONTACT AREA SELECTIVE GOLD OVER NICKEL 0.8µm min.  
Kontaktzone: selektiv vergoldet ueber Ni 0.8µm min.
- WIRE CRIMP AREA ELECTRO TIN PLATED OVER NICKEL 1.0µm min.  
Draht crimpbereich galv. verzinkt ueber Nickel 1.0µm min.
- △ CONTACT ZONE SELECTIVE PRE SILVER PLATED MIN. 1-1.5µm  
Kontaktzone selektiv vorversilbert min. 1-1.5µm
- △ CONTACT BODY ELECTRO TIN LATED OVER NICKEL 0.2µm min.  
kontaktkoerper : gal. verzinkt ueber Nickel 0.2µm min.  
TOUCHING AREA TO CANTILEVER SPRING  
SELECTIVE AU PLATED OVER NICKEL 0.8µm min.  
Anlageflaeche zur Ueberfeder Kontaktzone  
selektiv Au ueber Ni beschichtet 0.8µm min  
CANTILEVER SPRING: COMPLETELY AU PLATED 0.6µm min.  
Ueberfeder: komplett Au beschichtet 0.6µm min.
- △ CONTACT ZONE SELECTIVE PRE SILVER PLATED MIN. 3- 4.5µm  
Kontaktzone selektiv vorversilbert min. 3- 4.5µm
- △ 1-3 µm Sn28M LAYER FOR HIGHER TEMPERATURE REQUIREMENTS  
1-3 µm Sn28M Schicht fuer Hoehere Temperaturanforderungen
- △ TRANSITION ONLY FOR PN 964325 AND 964326  
Uebergang nur fuer PN 964325 und 964326
- △ DOTTED LINE IS ALTERNATIVE SHAPE  
Gestrichelte Linie alternative Form
- △ THICKNESS OF MATERIAL 0.4±0.03 mm  
Materialstärke 0.4±0.03 mm

11 OBSOLETE



REV	WIRE RANGE Drahtgroessen Bereich (mm²)	INSULATION Isolations Ø (mm)	MATERIAL Werkstoff	SURFACE Oberflaeche	LENGTH Laenge	WIRE CRIMP Drahtcrimp	INSULATION CRIMP Isolationscrimp	CRIMP HEIGHT (CH) Crimp - Hoehe	ORDER- NO. Bestell-Nr	CRIMP DATA AND CRIMP TOOL Crimpdata u. Crimpwerkzeuge
B	3.4 - 3.7	3.4 - 3.7	CuFe2		A=3.40 B=4.70 C=6.30 D=0.40 E=19.50	E = 3.80 G = 4.00 D <sub>cr</sub> = 1.70	H = 4.70 K = 4.90 D <sub>150</sub> = 2.60	1.50mm² = 1.76 2.00mm² = 1.90 2.50mm² = 2.04	963245-1	
B	2.2 - 3.0	2.2 - 3.0	CuFe2		A=2.20 B=3.50 C=5.10 D=0.30 E=19.50	E = 2.80 G = 3.00 D <sub>cr</sub> = 1.10	H = 3.50 K = 3.80 D <sub>150</sub> = 1.80	0.50mm² = 1.43 0.75mm² = 1.52 1.00mm² = 1.61	963244-1	
B	1.2 - 2.1	1.2 - 2.1	CuFe2		A=1.20 B=1.50 C=2.10 D=0.20 E=19.50	E = 1.50 G = 1.60 D <sub>cr</sub> = 0.80	H = 1.50 K = 1.60 D <sub>150</sub> = 1.00	0.20mm² = 1.13 0.25mm² = 1.15 0.35mm² = 1.19 0.50mm² = 1.26	963243-1	
B	3.6 - 4.3	3.6 - 4.3	CuFe2		A=3.60 B=4.90 C=6.50 D=0.40 E=19.50	E = 4.00 G = 4.20 D <sub>cr</sub> = 1.80	H = 4.90 K = 5.00 D <sub>150</sub> = 3.00	1.50mm² = 1.76 2.00mm² = 1.90 2.50mm² = 2.04	967011-1	
B	4.3 - 5.1	4.3 - 5.1	CuFe2		A=4.30 B=5.60 C=7.20 D=0.40 E=19.50	E = 4.60 G = 4.80 D <sub>cr</sub> = 2.40	H = 5.60 K = 5.70 D <sub>150</sub> = 4.00	3.00mm² = 2.13 4.00mm² = 2.35	968043-1	