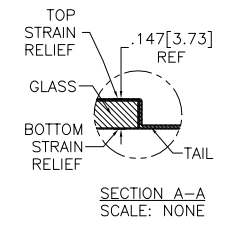
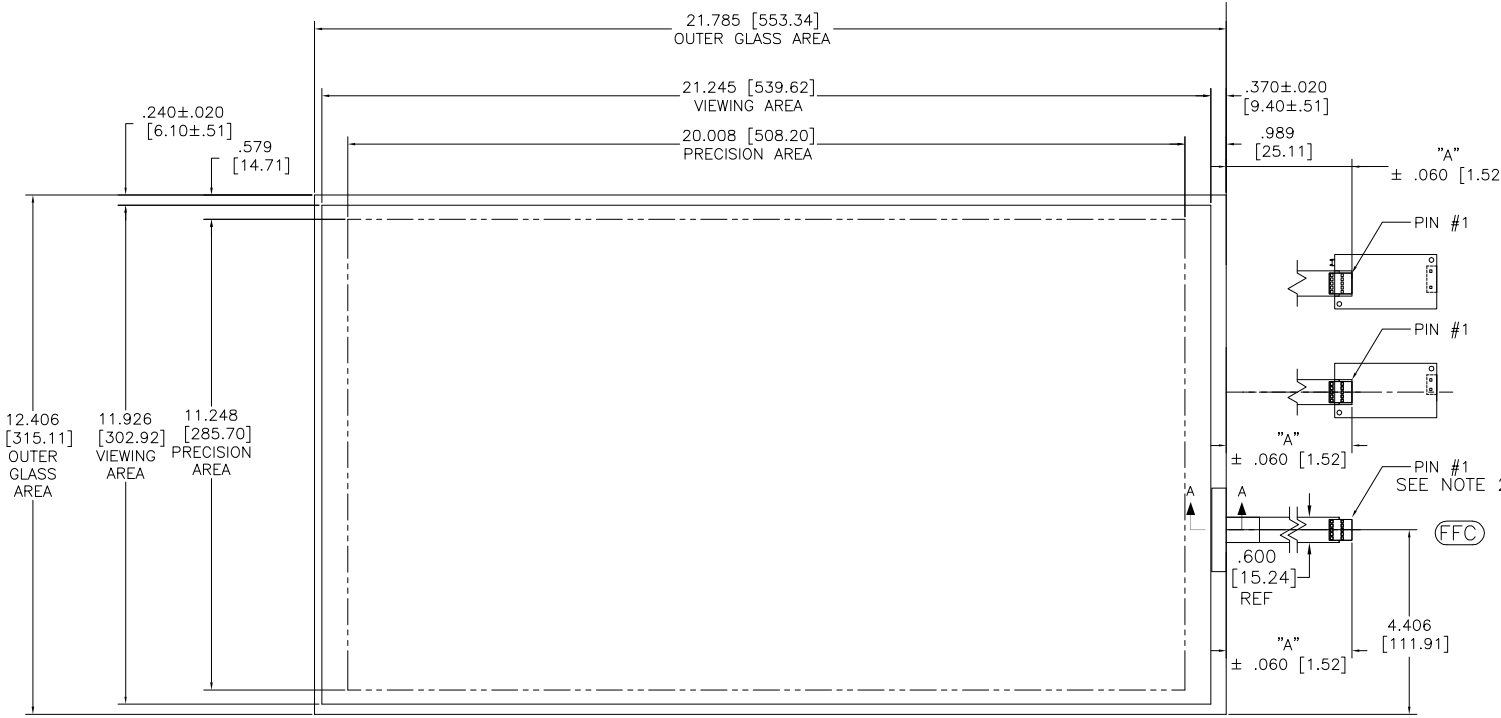


OGA DIAGONAL: 25.07 [636.77]
 VA DIAGONAL: 24.36 [618.83]
 PA DIAGONAL: 22.95 [583.00]

TOP LEVEL NUMBER	US NUMBER	TYPE	DIM "A" (TOTAL GLASS TO CONNECTOR)	A/G FINISH	PROD SPEC
17-9011-226	98-0003-3375-1	USB R	8.00" [203.20]	AG500	23655
N/A	98-0003-3794-3	SER	8.00" [203.20]	WC100	34523
N/A	98-0003-3875-0	SER	8.00" [203.20]	AG500	23655
N/A	98-0003-3876-8	FFC	8.00" [203.20]	AG500	23655
N/A	98-0003-4215-8	USB R	8.00" [203.20]	WC100	34523
N/A	98-1100-0092-8	FFC	8.00" [203.20]	WC100	34523



(SER)
 EXII-7720SC
 98-0003-2217-6
 SERIAL CONTROLLER
 SOLDER SIDE

(USB R)
 EXII-7769UC
 98-0003-2815-7
 USB CONTROLLER
 SOLDER SIDE



ESD CLAMSHELL CASE IS USED WITH USB AND SER ERMINATIONS.

- NOTES:
1. WEIGHT OF GLASS IN GRAMS: 1384±10%
 2. NICOMATIC HOUSING P/N: 0L05
 NICOMATIC RECEPTACLES (PINS) MATTE TIN PLATED P/N: 14106-12
 HOUSING ORIENTED WITH LATCH DOWN

PINOUT	
1	UL
2	UR
3	SHLD
4	LR
5	LL

UNITS INCHES [MM]

TOLERANCES UNLESS OTHERWISE SPECIFIED
 .X ±
 .XX ±.03 [.76]
 .XXX ±.015 [.38]
 ANGLES ±1°

THIRD ANGLE PROJECTION

DO NOT SCALE DRAWING

SCALE 1 = 1

3M 3M TOUCH SYSTEMS
 METHUEN, MA
 USA

© COPYRIGHT 2004
 THIS DOCUMENT IS COPYRIGHTED PROPERTY OF THE 3M COMPANY AND MAY NOT BE REPRODUCED WITHOUT 3M WRITTEN PERMISSION OR USED OR DISCLOSED FOR OTHER THAN 3M AUTHORIZED PURPOSES.

DRAWN AH 6/09

REV	REVISION	PER	CO	DATE	DRW
H	REVISE	PER	CO	036256	4/13 SB
G	REVISE	PER	CO	036101	2/13 SB
F	REVISE	PER	CO	035430	9/12 SB
CHANGE NOTICE				DATE	DRW

TITLE
 MARKETING DRAWING
 SCT32NN 24.36" W

CAD FORMAT AUTOCAD SHEET 1 OF 1

SIZE C DOCUMENT NO. TSD-37090 REV H