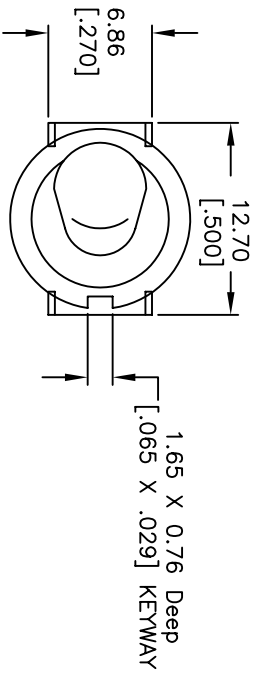


CIRCUIT: SPDT

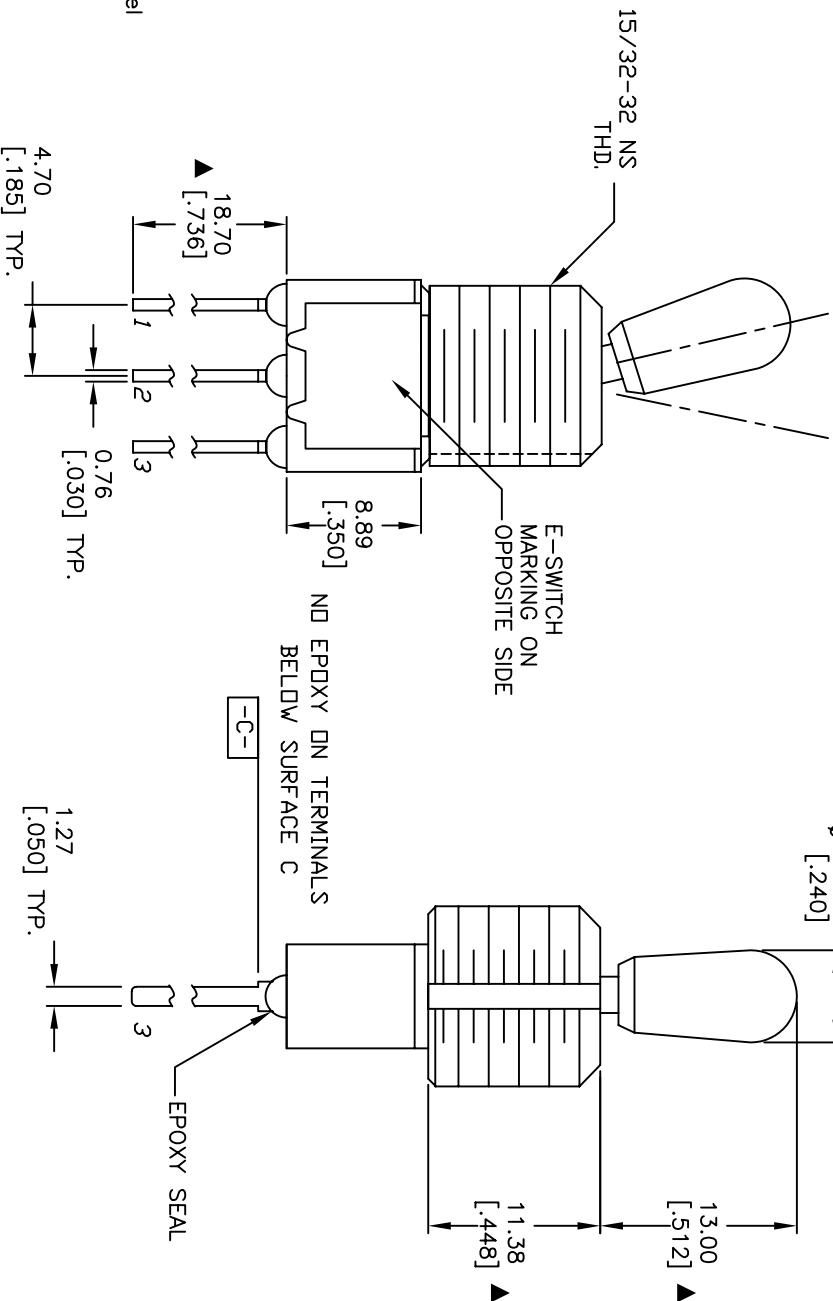
▲ SWITCH FUNCTION		
PDS. 1	PDS. 2	PDS. 3
DN	NDNE	DN
2-3	DPEN	2-1

NOTES:

1. ALL DIMENSIONS IN MM [INCH]
2. GENERAL TOLERANCE: X.X=±0.4
X.XX=±0.25
3. TERM. NOS. FOR REF. ONLY
4. RATING: 5A @120VAC OR 28VDC;
2A @250VAC
5. FIXED TERM. & MOVING CONTACT;
Copper Alloy W/Silver plate.
6. ELECTRICAL LIFE: 50,000 make-and-break
cycles at full load.
7. INSULATION RESISTANCE: 1,000M ohm min.
8. DIELECTRIC STRENGTH: 1000V RMS @sea level
9. OPERATING TEMP.: -30°C to 85°C
10. ▲ DENOTES CRITICAL PARAMETER.
11. 2002/95/EC (ROHS) COMPLIANT
12. HARDWARE TO BE SUPPLIED BULK:
T100012-LOCK WASHER QTY-1
T100003-LOCK RING QTY-1
T100004 HEX NUT QTY-2



PDS. 1 PDS. 2



E-SWITCH®

100SP1T7B13MS1QE H

TITLE

SCALE 2:1

DATE 11/8/05

DR PH

DWG ST111033

REV B

B	15538	DIM FROM 19.05 TO 18.70	11/16/05	PH
---	-------	-------------------------	----------	----

A	15511	RELEASED FOR PRODUCTION	11/8/05	PH
---	-------	-------------------------	---------	----

REV.	ECN No.	DESCRIPTION	DATE	CHKD
------	---------	-------------	------	------

THE INFORMATION CONTAINED IN THIS DOCUMENT IS PROPRIETARY TO E-SWITCH AND IS NOT TO BE COPIED OR TRANSFERRED