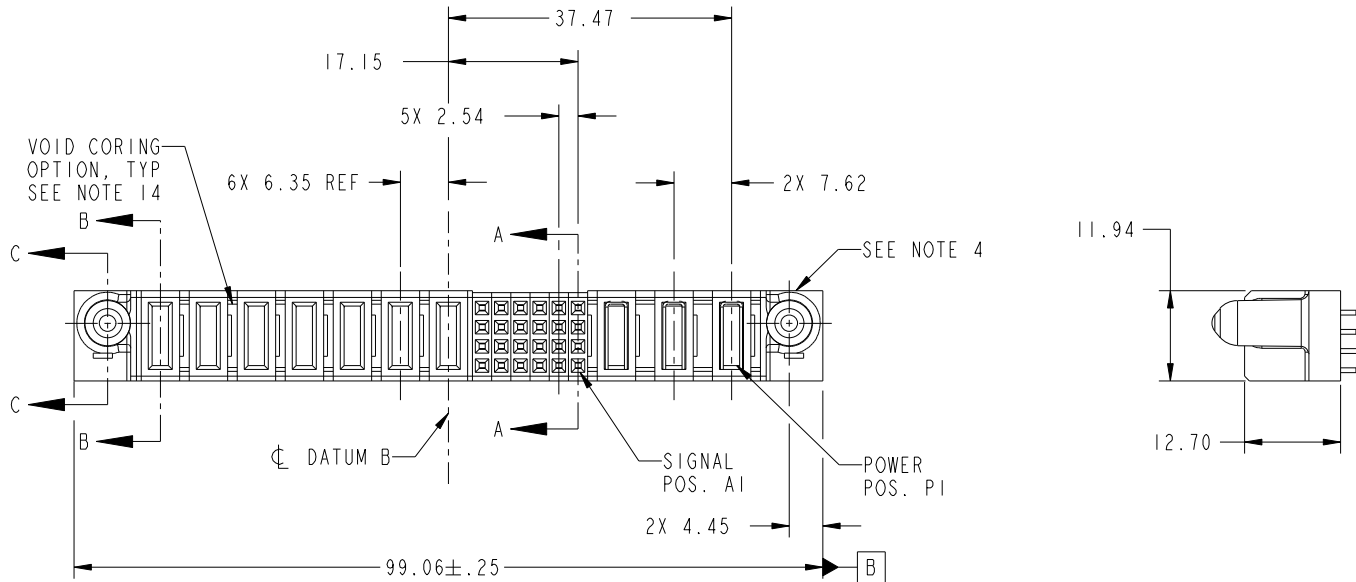


Tous droits strictement réservés. Reproduction ou communication a des tiers interdite sous quelque forme que ce soit sans autorisation écrite du propriétaire. Propriété de c.FCI. Droits de reproduction FCI.

All rights strictly reserved. Reproduction or issue to third parties in any form whatever is not permitted without written authority from the proprietor. Property of FCI. Copyright FCI.



PRODUCT NO. 51940-236-- NOTE: 3	ROWS D C B A	POWER								SIGNAL					POWER			
		E2	P10	P9	P8	P7	P6	P5	P4	6	5	4	3	2	1	P3	P2	P1
			PD	PD	PD	PA	PA	PD	PD	EEEEEE	EEEEEE	EEEEEE	EEEEEE	EEEEEE	PA	PD	PD	



CODE	DIM "M" MATING LENGTH	CONTACT TYPE
E	[N/A]	SIGNAL
PD	[2.34]	POWER
PA	[1.07]	POWER

mat'l code				SEE NOTE		tolerances unless otherwise specified		CUSTOMER		 www.fciconnect.com	
lfr	ecn no.	dr	date	linear	0.X ± 0.5	COPY		projection		title	
A	DG07-0378	JC	09/18/07	0.XX ± 0.25	Jerome Chen 09/05/07		MM		3ACP + 24S + 7P		
B	DG07-0498	JW	09/13/08	0.XXX ± 0.10	Jerome Chen 09/18/07		1:1		VERTICAL STB RECEIPT		
				angles	0° ± 2°	chr Gary Hsieh 09/05/07		product family		code	
						appd Joseph Hsiao 09/05/07		PwrBlade		213	
sheet index		revision sheet		B B		B B		size		sheet	
		1 2		B B		B B		A		1 of 4	
								51940-236			

A

B

3

4

A

B

1 | 2

Pro/E

PDM: Rev: B

STATUS: Released

Printed: Dec 20, 2010

cage code 28536

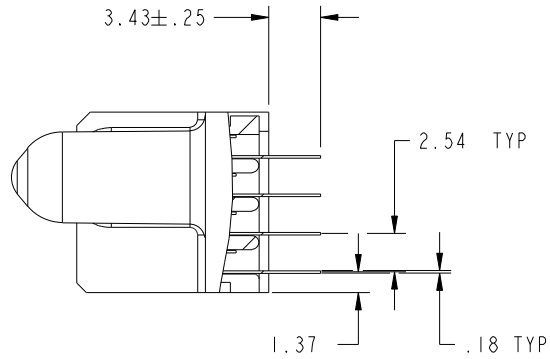
Tous droits strictement reserves. Reproduction ou communication a des tiers interdite sous quelque forme que ce soit sans autorisation ecrite du proprietaire. Propriete de c FCI. Droits de reproduction FCI.

All rights strictly reserved. Reproduction or issue to third parties in any form whatever is not permitted without written authority from the proprietor. Property of FCI. Copyright FCI.

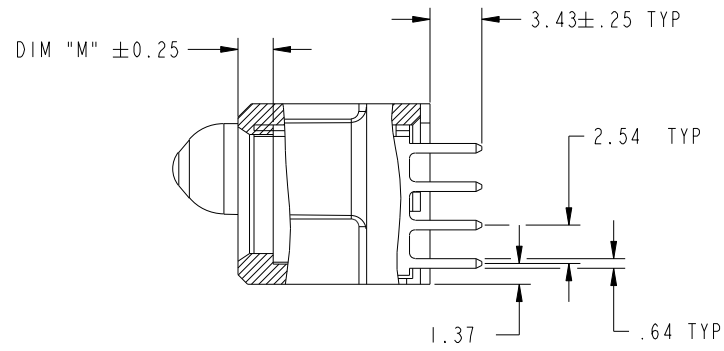


PRODUCT NUMBER

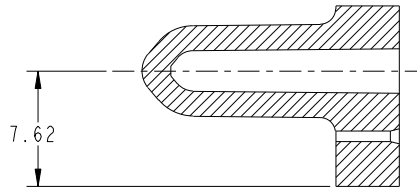
51940-236__
NOTE: 3



SECTION A-A
SCALE 2:1



SECTION B-B
SCALE 2:1



SECTION C-C
SCALE 2:1

mat'l code				SEE NOTE		tolerances unless otherwise specified		CUSTOMER		 www.fciconnect.com	
lfr	ecn no.	dr	date	linear	0.X ± 0.5		COPY		title		
B					0.XX ± 0.25		projection		3ACP + 24S + 7P VERTICAL STB RECEIPT		
					0.XXX ± 0.10				product family PwrBlade code		
				angles	0° ± 2°		 MM		size		213
				dr	Jerome Chen	09/05/07	scale		A		sheet
				engr	Jerome Chen	09/18/07	1:1		51940-236		2 of 4
				chr	Gary Hsieh	09/05/07					
				appd	Joseph Hsia	09/05/07					
sheet index	revision sheet										

cage code 2856

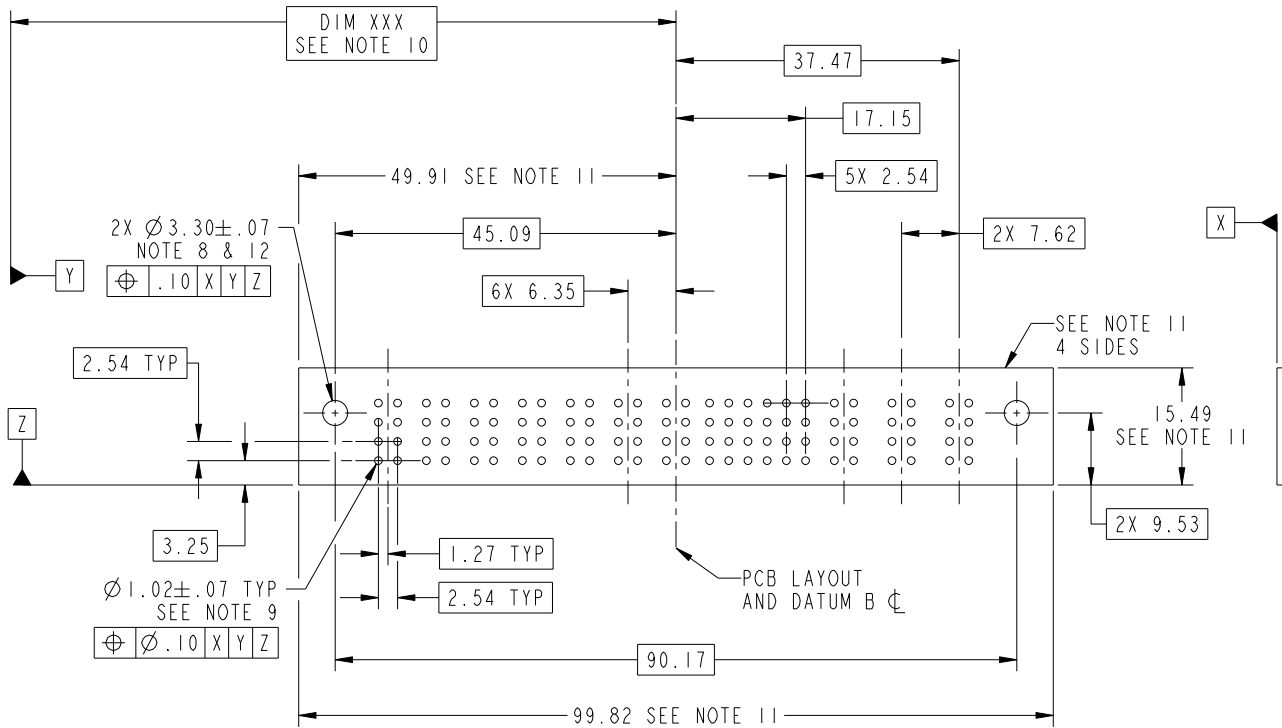
Tous droits strictement reserves. Reproduction ou communication a des tiers interdite sous quelque forme que ce soit sans autorisation ecrite du proprietaire. Propriete de c FCI. Droits de reproduction FCI.

All rights strictly reserved. Reproduction or issue to third parties in any form whatever is not permitted without written authority from the proprietor. Property of FCI. Copyright FCI.



PRODUCT NUMBER

51940-236__
NOTE: 3



RECOMMENDED PCB LAYOUT

mat'l code				SEE NOTE		tolerances unless otherwise specified		CUSTOMER		 www.fciconnect.com	
lir	ecn no.	dr	date	linear	0.X ±0.5		COPY		title 3ACP + 24S + 7P VERTICAL STB RECEPT		
B					0.XX ±0.25		projection				
					0.XXX ±0.10						
				angles	0° ±2°		 MM		product family PwrBlade code 213		
				dr	Jerome Chen	09/05/07	scale		size	dwg no	sheet 3 of 4
				enrg	Jerome Chen	09/18/07	1:1		A	51940-236	
				chr	Gary Hsieh	09/05/07					
				appd	Joseph Hsiao	09/05/07					
sheet index	revision sheet										

cage code 2256

Pro/E

PDM: Rev: B

STATUS: Released

Printed: Dec 20, 2010

Tous droits strictement réservés. Reproduction ou communication a des tiers interdite sous quelque forme que ce soit sans autorisation écrite du propriétaire. Propriete de c.FCI. Droits de reproduction FCI.

All rights strictly reserved. Reproduction or issue to third parties in any form whatever is not permitted without written authority from the proprietor. Property of FCI. Copyright FCI.



1 | 2

3

4

PRODUCT NUMBER

51940-236__
NOTE: 3

NOTES:

1. DIMENSIONS AND TOLERANCES ARE IN ACCORDANCE WITH ASME Y14.5M, 1994 UNLESS OTHERWISE SPECIFIED.

CONNECTOR NOTES:

② HOUSING MATERIAL: UL 94 V-0 GLASS FILLED HIGH-TEMP THERMOPLASTIC
POWER CONTACT MATERIAL: COPPER ALLOY
SIGNAL PIN MATERIAL: COPPER ALLOY

△B 3. PLATING SPEC. SEE ITEM 5 & 6 IN PRINT 10064183 FOR PLATING SPEC OF 51940-236; 51940-236LF RESPECTIVELY

④ MANUFACTURER'S NAME, P/N, AND DATE CODE TO APPEAR ON THIS SURFACE.

5. PRODUCT SPECIFICATION GS-12-149. APPLICATION SPECIFICATION BUS-20-067.

6. PACKAGED IN TRAYS.

PCB NOTES:

7. ALL HOLE DIAMETERS ARE FINISHED HOLE SIZE.

⑧ MOUNTING HOLES, WHERE APPLICABLE, ARE UNPLATED.

⑨ $\varnothing 1.151 \pm 0.025$ DRILLED HOLES PLATED WITH 0.008 MIN SnPb OR Sn OVER 0.03 TO 0.08 Cu PLATING TO ACHIEVE $\varnothing 1.02 \pm .07$ HOLE.

⑩ "DIM XXX" TO BE DETERMINED BY THE CUSTOMER.

⑪ CONNECTOR KEEP-OUT ZONE.

⑫ RECOMMENDED RETENTION TO PCB $\varnothing 3.30$ THRU HOLE FOR #5 SOCKET HEAD CAP SCREW MAX. HEAD 5.21 RECOMMENDED SCREW LENGTH 11.99 + PCB THICKNESS. RECOMMENDED SCREW SEATING TO PCB TORQUE: 2-5 lbf-in (2300-5760 gf-cm).

13. A/B SYMBOL WILL BE NEXT TO ANY DIMENSION, VIEW, OR NOTE WHICH HAS BEEN MODIFIED WITH THE CURRENT DRAWING REVISION.

14. THE VOID CORING IN BETWEEN POWER MODULES, SIGNAL MODULES AND END MODULES ARE OPTIONAL AND THE SHAPE MAY BE DIFFERENT FOR OPTIMIZING THE MOLDING PROCESS. THE VOID CORING WILL NOT EFFECT TO PRODUCT FUNCTION.

mat'l code				SEE NOTE		tolerances unless otherwise specified		CUSTOMER		FCI www.fciconnect.com	
lfr	ecn no.	dr	date	linear	0.X ±0.5		COPY		projection	title	
B					0.XX ±0.25		3ACP + 24S + 7P			VERTICAL STB RECEPT	
					0.XXX ±0.10		MM			product family PwrBlade	
				angles	0° ±2°		scale		A	size	dwg no
				dr	Jerome Chen	09/05/07	1:1			51940-236	213
				enrg	Jerome Chen	09/18/07				4 of 4	
				chr	Gary Hsieh	09/05/07					
				appd	Joseph Hsia	09/05/07					
sheet index	revision sheet										

A

A

B

B

1 | 2

Pro/E

PDM: Rev:B

STATUS: Released

Printed: Dec 20, 2010

cage code 2856