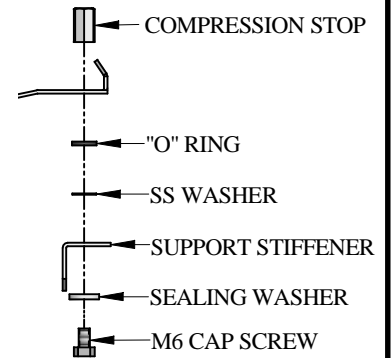
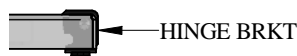
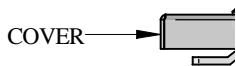


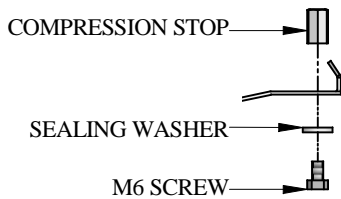
PRE - ASSEMBLY INSTRUCTIONS:

Caution: Check gasket on desk cover for damage before assembly. If cut or torn, contact Hammond Manufacturing for immediate replacement.

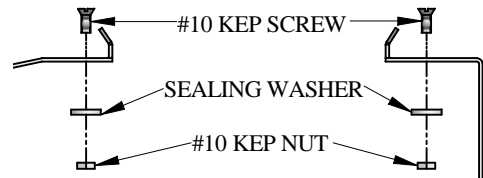
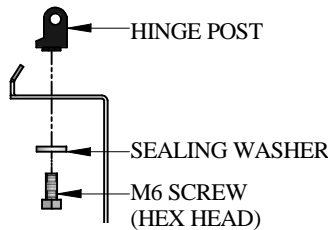
Note: When assembling total modular system build from the floor up for assembly ease. Plinth > Base Unit > Desk Unit > Turret



DETAIL A



SECTION X-X



SECTION Y-Y

ASSEMBLY INSTRUCTIONS:

- A) Mount hinge posts onto back slots on desk top. Center post on slot, and torque M6 hex head screw to 60 in/lbs.
- B) Mount compression stops on to front slots on desk to center stop on slot, and torque screw to 60 in/lbs. (Section X-X)
- C) Mount sealing hardware in unused 0.312 dia holes as pre section Y-Y (#10-32 x .5), and torque screw to 35 in/lbs.
- D) Assemble desk cover onto hinge posts using hinge pins provided.
- E) Close cover using 1/4 turn latches.

ASSEMBLY INSTRUCTIONS FOR SUPPORT STIFFENER - OPTIONAL FOR 48 OR 60 INCH WIDE UNITS

This stiffener is only advised for use if heavy equipment is going to set directly on desk cover: Anything over 100 lbs. MAX weight 250 lbs

- A) Add stiffener along center support. Latch side of desk cover. See detail A.
- B) Use M6 cap screws, "O" ring, bracking washer, sealing washer to mount stiffener to center support
- C) Assemble the desk cover as per steps D and E in assembly intructions above.

