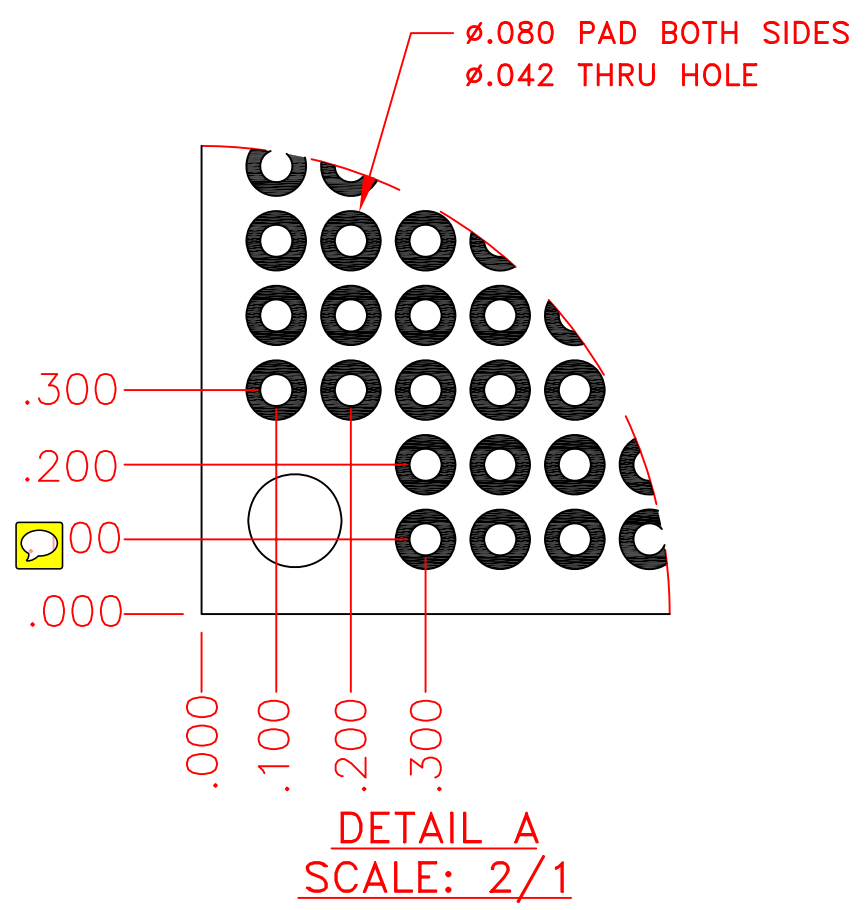
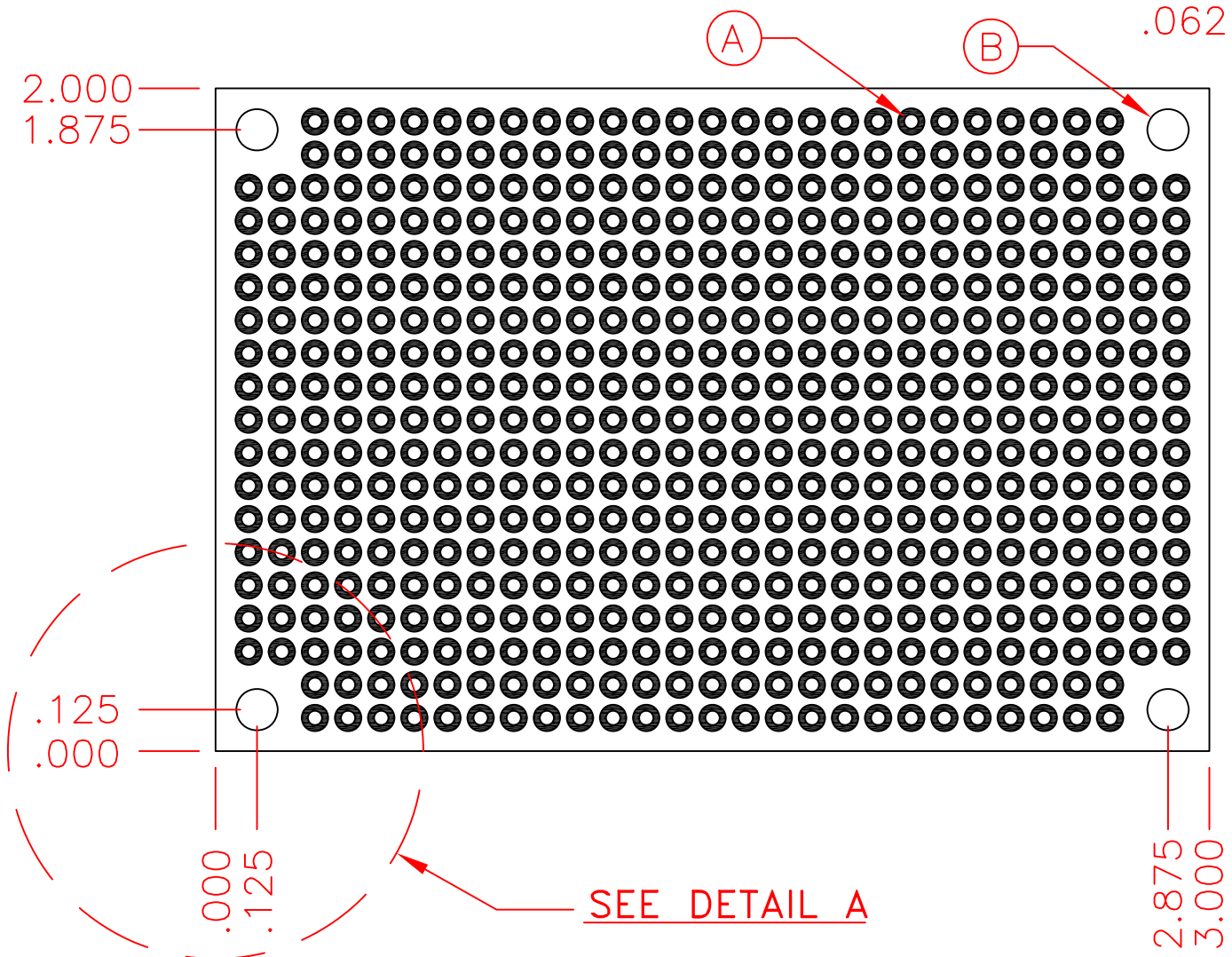


All information disclosed herein was originated by, & shall remain the property of Vector Electronics & Tech., Inc., which reserves all patent, proprietary, design use, sale, manufacturing & reproduction rights thereto. Vector Electronics & Tech., Inc., retains & reserves sole right to modify or alter any part or all of this drawing without notice.

REVISIONS					
ZONE	REV	BY	DESCRIPTION	DATE	APPROVED
ALL	A	N.D	ENGINEERING RELEASE	08/24/04	
	B	TRUSHAR	REVISED FAB NOTES CORRECTED HOLE SIZES ADDED HOLE SIZE TOLERANCES CORRECTED HOLE QTY.	04/27/11	



- 6. TOLERANCE NON CUMULATIVE
- 5. BOARDS TO BE IAW IPC-A-600C
- 4. BOW AND TWIST .010 INCH PER INCH MAX.
- 3. HOLES TO BE COATED WITH .001 MIN. COPPER AND ALL PADS TO BE COATED WITH .0002 MIN. 63/37 TO 60/40 TIN-LEAD SOLDER
- 2. FINISHED COPPER THICKNESS TO BE 1oz.
- 1. MATERIAL : FR-4 EPOXY GLASS, .062±.007 THK. , 1/1 oz.

NOTES: UNLESS OTHERWISE SPECIFIED

SYM	FINISHED HOLE SIZE	QTY	PLTD THRU
B	∅.125±.005	4	NO
A	∅.042±.003	535	YES

HOLE TABULATION

QTY REQD	FSCM NO.	PART OR IDENTIFYING NO.	NOMENCLATURE OR DESCRIPTION	MATERIAL SPECIFICATION	FIND NO.
PARTS LIST					
UNLESS OTHERWISE SPECIFIED DIMENSIONS ARE IN INCHES. TOLERANCES ARE: FRACTIONS DECIMALS ANGLES ± .XXX±.010 ±1°			CONTRACT NO.	VECTOR ELECTRONICS & TECH., INC. N. HOLLYWOOD, CA	
MATERIAL	1	APPROVALS	DATE	CIRCBORD, PADS PER HOLE 2.00" X 3.00"	
FINISH	3	DRAWN	N. DIXIT 08/24/04	SIZE	CAGE CODE 82893
DO NOT SCALE DRAWING	ISSUED	CHECKED		DWG NO.	8029
				SCALE	8029.DWG
					SHEET 1 OF 1