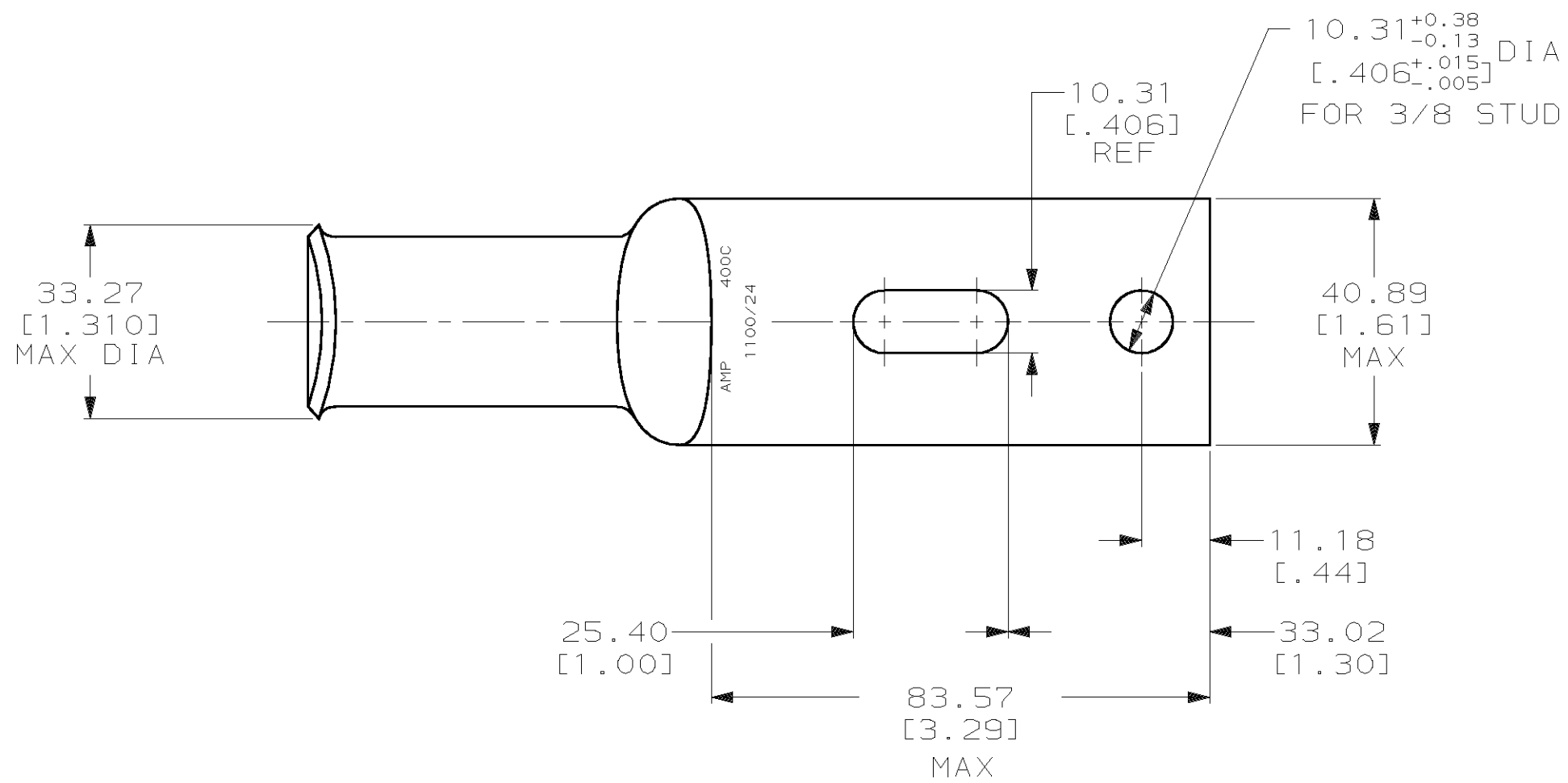
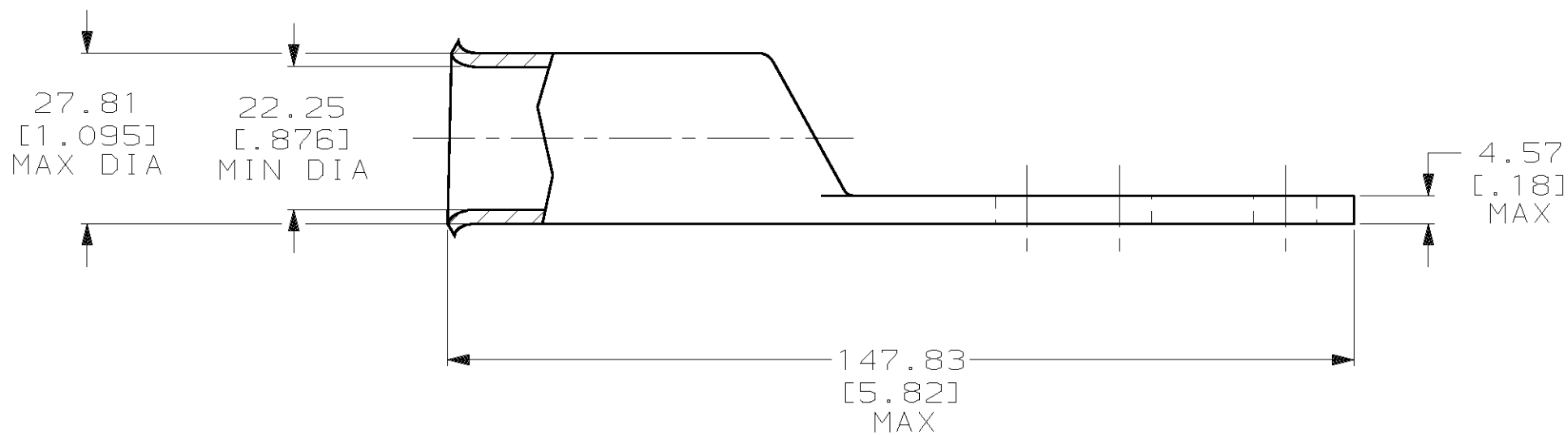


THIS DRAWING IS UNPUBLISHED. RELEASED FOR PUBLICATION .19
 © COPYRIGHT 19 BY AMP INCORPORATED. ALL INTERNATIONAL RIGHTS RESERVED.

LOC		DIST		P		F		REVISIONS		DATE	APPD
ZONE	LTR	DESCRIPTION									
G	86					C	REV PER 0G3A-0561-01	07OCT02	JR/MS		



△ TIN PL 0.00381 [.000150] MIN THK PER MIL-T-10727



276963

276963-1

PART NO

DO NOT SCALE PRINT.
 UNLESS SPECIFIED
 DIMENSIONS IN mm [INCHES]
 TOLERANCES ON :
 2 PLC DEC ± 0.51 [.020]
 3 PLC DEC ± -
 ANGLES ± -
 MATERIAL
 ANNEALED COPPER
 ASTM B-75

DR 03/09/90
 DK SCHRUM
 CHK 24JAN95
 MS FEHER
 APPD 24JAN95
 WJ VOCKROTH
 APPD 24JAN95
 TL SHUTTER
 PRODUCT SPEC
 108-30200

AMP AMP INCORPORATED
 Harrisburg, Pa. 17105
 NAME
 TERMINAL, AMPPOWER,
 WIRE SIZE: 400 MCM

FINISH
 △

APPLICATION SPEC
 -
 WEIGHT -

SIZE
C
 SCALE 1:1

CAGE CODE 00779
 DRAWING NO 276963
 SHEET 1 OF 1

