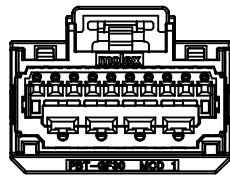
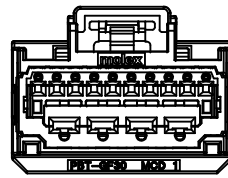


POLARIZATION OPTION "A"  
P/N: 34969-0140



POLARIZATION OPTION "B"  
P/N: 34969-0141



POLARIZATION OPTION "C"  
P/N: 34969-0142

MOLEX ASSEMBLY PART NO.'S	MATING COMPONENT	
	VERTICAL HEADER	RIGHT ANGLE HEADER
34969-0140	34772-0140	34773-0140
34969-0141	34772-0141	34773-0141
34969-0142	34772-0142	34773-0142

ITEM	DESCRIPTION	COLOR	MOLEX COMPONENTS PART NO.	RECYCLING CODE	WEIGHT	NO OF ITEMS REQUIRED	
1	FEMALE HOUSING POL A	BLACK	34969-3140	PBT-GF30	7.24g	1	
2	FEMALE HOUSING POL B	GRAY	34969-3141	PBT-GF30	7.24g		1
3	FEMALE HOUSING POL C	BROWN	34969-3142	PBT-GF30	7.24g		1
3	TPA	NATURAL	34927-1200	PBT-GF30	1.14g	1	1

ITEM	APPLICABLE COMPONENTS		APPLICABLE WIRE SIZE		PAYOFF
	DESCRIPTION	TYPE	WIRE GAGE	MAXIMUM INSULATION DIAMETER	
1	MOLEX CTX64 TERMINAL	Sn 34803-0212	20 AWG	1.90 mm	LEFT
2		Sn 34803-0211	22 AWG	1.65 mm	LEFT
3		Sn 34803-0214	20 AWG	1.90 mm	RIGHT
4		Sn 34803-0213	22 AWG	1.65 mm	RIGHT
5	TYCO 2.8 TERMINAL	Sn 1326030-4	10/12 AWG	4.04 mm	\
6		Sn 1326030-3	14/16 AWG	2.69 mm	\
7		Sn 1326030-2	18/20 AWG	2.06 mm	\
8		Sn 1326030-1	22 AWG	1.65 mm	\
9	TYCO 2.8 TERMINAL	Sn 7116-4112-02	14 AWG	2.69 mm	\
10		Sn 7116-4111-02	16/18 AWG	2.34 mm	\
11		Sn 7116-4110-02	20/22 AWG	1.85 mm	\



ISOMETRIC VIEWS  
SCALE 1:1  
(POLARITY A SHOWN)

NOTES: VALID UNLESS OTHERWISE SPECIFIED

1. GENERAL:

- a. APPLICATION SPECIFICATION SEE: AS-34729-010
- b. PRODUCT SPECIFICATION SEE: PS-34969-100
- c. PACKAGING SPECIFICATION PER MOLEX DRAWING: PK-31301-211
- d. PARTS MUST BE IN COMPLIANCE TO MOLEX CHEMICAL SUBSTANCES FOR PRODUCTS AND PACKAGING SPECIFICATION: PS-40000-5015
- e. DATA MUST BE SUBMITTED UNDER THE MOLEX PART NUMBER TO IMDS (COMPANY ID#13255)

2. DESIGN - MATERIALS:

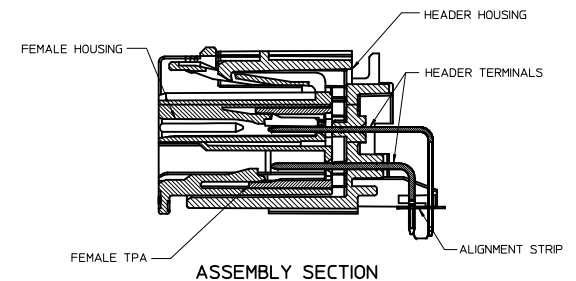
- a. SEE BOM TABLE

3. DESIGN - GEOMETRY:

- a. THIS IS A 100% CAD GENERATED PART. THE CAD MATHEMATICAL DATA IS THE MASTER FOR THIS PART. FOR DIMENSIONAL OR ANY INFORMATION NOT SHOWN ON THIS DRAWING, ANALYZE THE CAD MODEL.
- b. GEOMETRIC DIMENSIONS AND TOLERANCES PER ASME Y14.5M - 1994
- c. EDGES AND UNDIMENSIONED DETAILS PER ISO13715
- d. CORNERS SHOWN AS SHARP TO BE R 0.2 MAX.
- e. LETTERING SHALL BE 0.15 MAX RAISED IN 0.25 MAX RECESS PAD. THIS INCLUDES RECYCLING CODE, CAVITY ID, VENDOR IDENTIFICATION, AND CUSTOMER MATERIAL NUMBER.
- f. VISUAL DEFECTS SHALL MEET COSMETIC STANDARD PS-45499-002 (Class B)

4. DESIGN - MANUFACTURING:

- a. TPAs MAY BECOME SEATED DURING TRANSIT. IF THIS OCCURS, REFERENCE MOLEX PRODUCT SPECIFICATION PS-34646-001

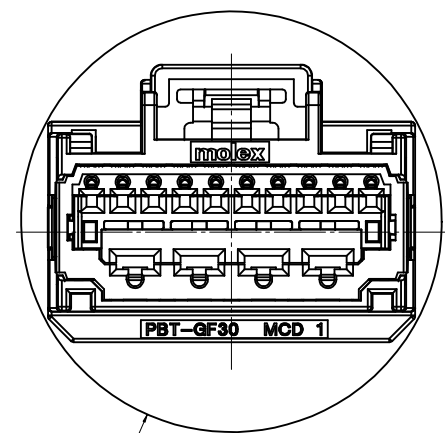
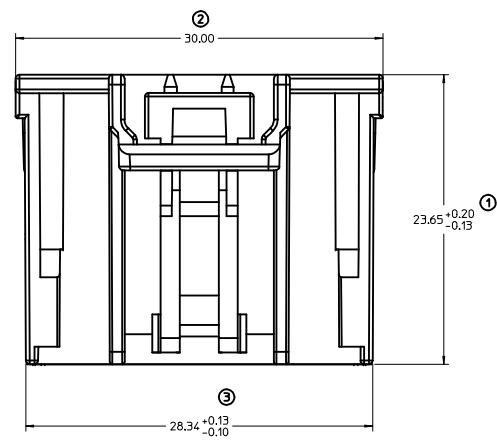


ASSEMBLY SECTION

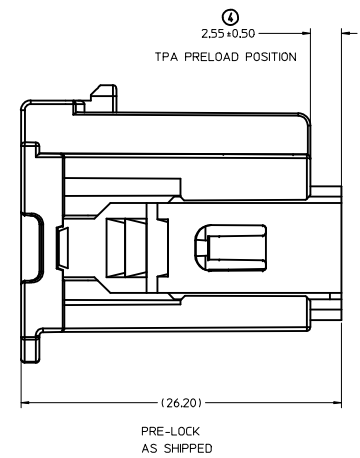
INITIAL RELEASE IEC NO: UAU2016-1509 DRAWN: FISCHERO1 2016/04/11 CHYK: APPROVAL: RBAUMAN 2016/04/14 DESCRIPTION:	QUALITY SYMBOLS	GENERAL TOLERANCES (UNLESS SPECIFIED)	DIMENSION STYLE	SCALE	DESIGN UNITS	THIRD ANGLE PROJECTION
	$\nabla=0$ $\nabla=0$ $\nabla=0$	4 PLACES $\pm$ --- $\pm$ --- 3 PLACES $\pm$ --- $\pm$ --- 2 PLACES $\pm$ 0.13 $\pm$ --- 1 PLACE $\pm$ 0.25 $\pm$ --- ANGULAR $\pm$ 3 °	MM ONLY DRAWN BY: SONGOS DATE: 2012/02/20 CHECKED BY: TITAN DATE: 2012/02/16 APPROVED BY: RBAUMAN DATE: 2013/01/04	3:1	METRIC	
	DRAFT WHERE APPLICABLE MUST REMAIN WITHIN DIMENSIONS		SEE TABLE	MATERIAL NO. SD-34969-010 DOCUMENT NO.		TITLE 14 CKT HYBRID CTX 0.64 AND GENY 2.80 RECEPTACLE
	SIZE D		THIS DRAWING CONTAINS INFORMATION THAT IS PROPRIETARY TO MOLEX INCORPORATED AND SHOULD NOT BE USED WITHOUT WRITTEN PERMISSION		MOLEX INCORPORATED SHEET NO. 1 OF 2	

20 19 18 17 16 15 14 13 12 11 10 9 8 7 6 5 4 3 2 1

M  
L  
K  
J  
I  
H  
G  
F  
E  
D  
C  
B  
A

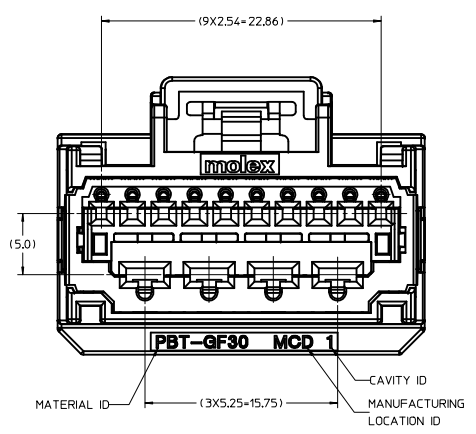


Ø 35.38 PASS-THRU WITH +1.0 PER SIDE

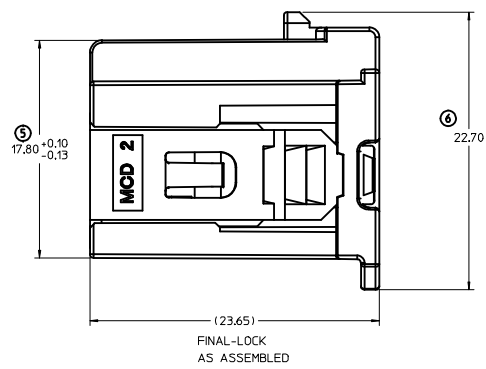


TPA PRELOAD POSITION

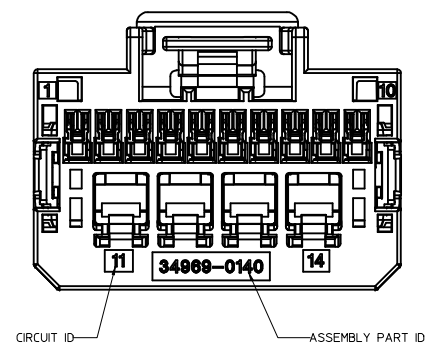
PRE-LOCK AS SHIPPED



MATERIAL ID CAVITY ID MANUFACTURING LOCATION ID



FINAL-LOCK AS ASSEMBLED



CIRCUIT ID ASSEMBLY PART ID

<b>SEE SHEET 1</b> IEC NO. UAU2016-1509 DRAWN/FISCHER01 2016/04/11 CHKD: APPR:RBAUMAN 2016/04/14	QUALITY SYMBOLS ∇=0 ∇=0 ∇=0	GENERAL TOLERANCES (UNLESS SPECIFIED) mm INCH 4 PLACES ± --- ± --- 3 PLACES ± --- ± --- 2 PLACES ± 0.13 ± --- 1 PLACE ± 0.25 ± --- ANGULAR ± 3°	DIMENSION STYLE MM ONLY	SCALE 5:1	DESIGN UNITS METRIC	THIRD ANGLE PROJECTION	
	DRAWN BY LSONG05	DATE 2012/02/20	CHECKED BY T.I.TAN	DATE 2012/02/16	APPROVED BY RBAUMAN	DATE 2013/01/04	MOLEX INCORPORATED
	MATERIAL NO. SEE SHEET 1	DOCUMENT NO. SD-34969-010	DRAFT WHERE APPLICABLE MUST REMAIN WITHIN DIMENSIONS	THIS DRAWING CONTAINS INFORMATION THAT IS PROPRIETARY TO MOLEX INCORPORATED AND SHOULD NOT BE USED WITHOUT WRITTEN PERMISSION			
				SHEET NO. 2 OF 2			

19 18 17 16 15 14 13 12 11 10 9 8 7 6 5 4 3 2 1