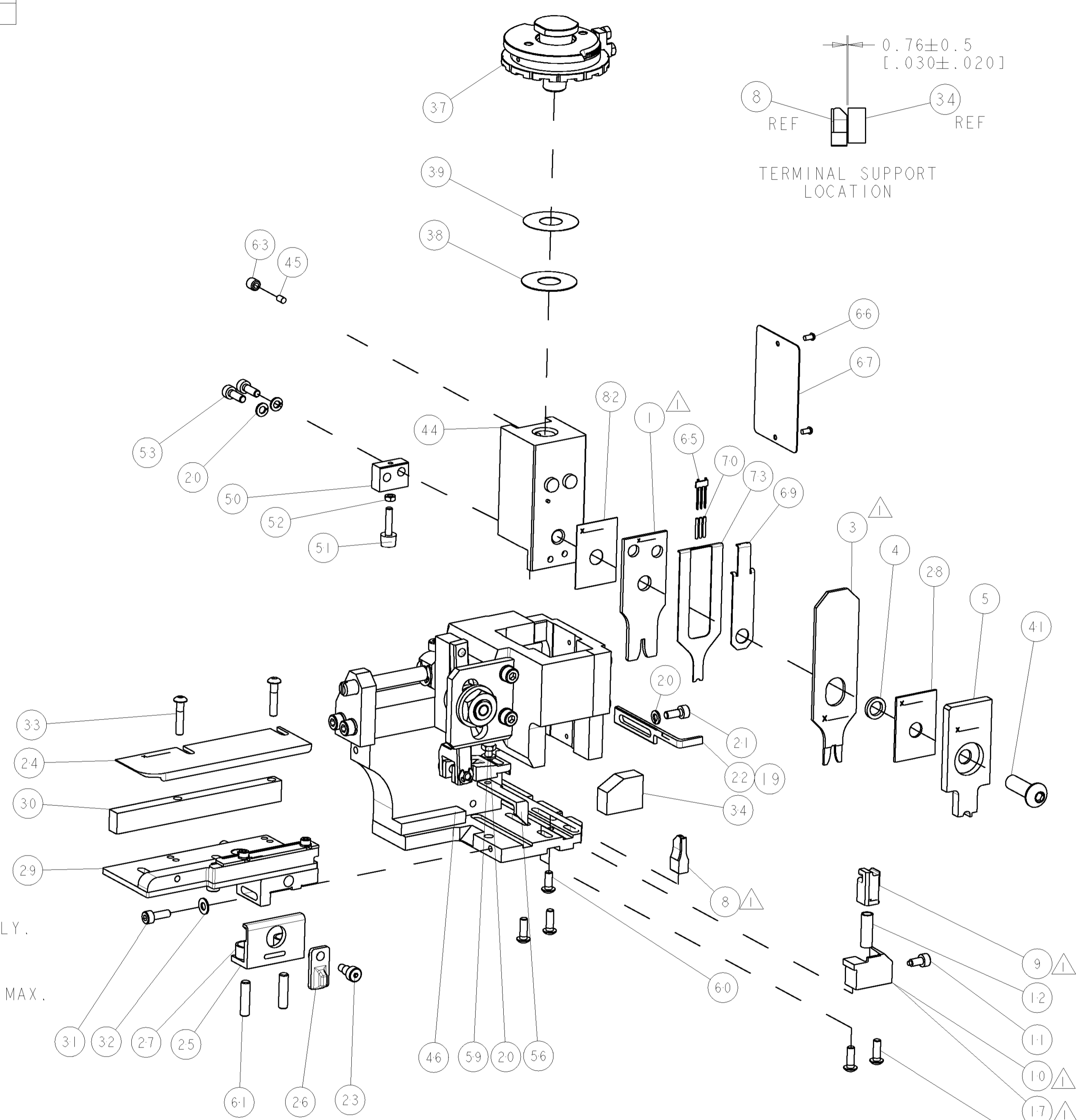
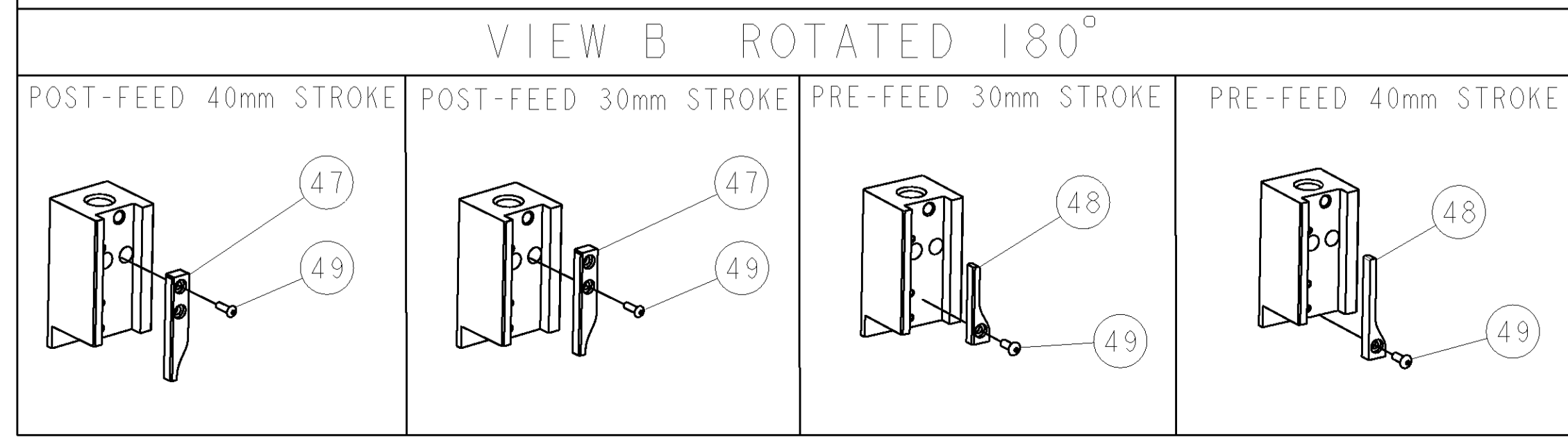


PART NUMBER	REV	TERMINATOR	FEED TYPE	DESCRIPTION
1528558-1	A	LEADMAKER	MECH POST FEED	CUTS CARRIER
1528558-2	A	BENCH	MECH PRE FEED	CUTS CARRIER
1528558-6	A	LEADMAKER	MECH POST FEED	CONTINUOUS CARRIER
7-1528558-1	A	LEADMAKER	MECH POST FEED	-1 AND SPARE PARTS
7-1528558-2	A	BENCH	MECH PRE FEED	-2 AND SPARE PARTS
7-1528558-6	A	LEADMAKER	MECH POST FEED	-6 AND SPARE PARTS
7-1528558-7	A	-	-	SPARE PARTS KIT

CRIMP DATA		TYCO TERMINAL	TYCO CRIMP SPEC
TERMINAL NAME: AMP-DUAC POWER CTC SOCKET			
CRIMP	SIZE	TYPE	RANGE
WIRE	2.29 [1.090 IN]	F	16 AWG - 2 X 18 AWG
INSUL	3.05 [1.120 IN]	F	3.30 MAX [1.130 IN MAX] ⁴
WIRE STRIP LENGTH 2.40-3.20 [1.094-1.126 IN]		APPL INSTRUCTIONS 408-8322 & 408-8490 ⁴	
TERMINAL APPL SPEC	114-19048	FEED	12.00 [4.472 IN]
TERMINALS APPLIED			
794418	-	-	-
794140	-	-	-
-	-	-	-
-	-	-	-
-	-	-	-
WIRE SIZE	CRIMP HEIGHT	REF SETTING	
2 X 18 AWG	1.300 ±0.025 [1.051 ±0.001 IN]	B4	
16 AWG	1.195 ±0.025 [1.047 ±0.001 IN]	C0	



* WARNING
ON INSTALLATION, SET WIRE DISC TO LARGEST WIRE SIZE SETTING. USE OF SETTINGS BELOW MIN. REQUIRED CRIMP HEIGHT SETTING WILL CAUSE DAMAGE TO CRIMP TOOLING.



77	76	72	71	6	2	1	PART NO	DESCRIPTION	ITEM NO
-	-	-	-	-	-	-	455888-3	SPACER, CRIMPER	82
-	-	-	-	-	-	-	-	-	81
-	-	-	-	-	-	-	-	-	80
-	-	-	-	-	-	-	-	-	79
-	-	-	-	-	-	-	-	-	78
-	-	-	-	-	-	-	-	-	77
-	-	-	-	-	-	-	-	-	76
-	-	-	-	-	-	-	-	-	75
-	-	-	-	-	-	-	-	-	74

SET UP GAGE 458637-3		LOC	DIST	REVISONS				
A	66			REV	DATE	BY	APPD	
				A	19SEP2005	MC	FB	

REV	DATE	BY	APPD	PART NO	DESCRIPTION	ITEM NO
-	-	-	-	1490525-3	DEPRESSOR, WIRE	73
-	-	-	-	-	-	72
-	-	-	-	1338705-3	DOCUMENTATION PACKAGE	71
-	3	3	3	2-23147-2	SPRING, COMPRESSION	70
-	-	-	-	1490524-1	DEPRESSOR, SPACER	69
-	-	-	-	-	-	68
-	-	-	-	461264-5	PLATE, IDENTIFICATION	67
-	2	2	2	21017-2	SCREW, DRIVE	66
-	-	-	-	1424350-1	HOLDER, PIN	65
-	-	-	-	-	-	64
-	-	-	-	3-18031-0	SCR, SET, CUP POINT M6 X 6.0	63
-	-	-	-	-	-	62
-	2	2	2	2-18032-5	SCR, SET, FLT POINT M5 X 20.0	61
-	-	-	-	18024-7	SCR, BTN SKT HD CAP (M4 X 10.0)	60
-	-	-	-	5-18022-2	SCR, HEX HD CAP M4 X 8.0	59
-	-	-	-	-	-	58
-	-	-	-	-	-	57
-	-	-	-	1338685-1	PAWL, FEED	56
-	-	-	-	-	-	55
-	4	4	4	18024-8	SCR, BTN SKT HD CAP (M4 X 12.0)	54
-	2	2	2	1-18023-2	SCR, SKT HD CAP M4 X 12.0	53
-	-	-	-	18030-1	NUT, HEX, REG M3	52
-	-	-	-	811242-5	BUMPER, HOLD DOWN	51
-	-	-	-	690753-2	SPACER, TONKER	50
-	-	-	-	18024-3	SCR, BTN SKT HD CAP (M3 X 10.0)	49
-	-	-	-	1338675-1	CAM, UNIVERSAL PRE FEED	48
-	-	-	-	1338676-1	CAM, UNIVERSAL POST-FEED	47
-	-	-	-	1320999-3	APPLICATOR SUBASSEMBLY, HDI	46
-	-	-	-	690191-1	PLUG, NYLON	45
-	-	-	-	1338660-1	RAM	44
-	-	-	-	-	-	43
-	-	-	-	-	-	42
-	-	-	-	2-18024-6	SCR, BTN SKT HD CAP (M8 X 25.0)	41
-	-	-	-	-	-	40
-	-	-	-	690125-1	SHIM SUB-ASSY	39
-	-	-	-	469367-9	SHIM	38
-	-	-	-	879103-2	DISC, ADJUSTABLE GEITNER	37
-	-	-	-	-	-	36
-	-	-	-	-	-	35
-	-	-	-	1320934-1	SUPPORT, TERMINAL	34
-	2	2	2	1-18024-0	SCR, BTN SKT HD CAP (M4 X 20.0)	33
-	-	-	-	18027-2	WASHER, FLAT, REG M4	32
-	-	-	-	1-18023-2	SCR, SKT HD CAP M4 X 12.0	31
-	-	-	-	1-1320908-5	SPACER, STRIP GUIDE	30
-	-	-	-	1633073-1	STRIP GUIDE ASSEMBLY	29
-	-	-	-	1-455888-0	SPACER, CRIMPER	28
-	2	2	2	1-22284-0	SPRING, COMPRESSION	27
-	-	-	-	356835-1	LEVER, DRAG RELEASE	26
-	-	-	-	240792-5	DRAG, TERMINAL	25
-	-	-	-	1320928-1	PLATE, STRIP GUIDE	24
-	-	-	-	980371-4	SCR, SKT HD SHLDR 5.0 DIA X 6.0	23
-	-	-	-	690472-2	STRIPPER	22
-	-	-	-	1-18023-1	SCR, SKT HD CAP M4 X 10.0	21
-	4	4	4	18025-2	WASHER, SPRG LOCK, REG M4	20
-	-	-	-	690472-1	STRIPPER	19
-	-	-	-	-	-	18
-	-	-	-	1338684-1	HOLDER, SHEAR, NO-CUT	17
-	-	-	-	-	-	16
-	-	-	-	-	-	15
-	-	-	-	-	-	14
-	-	-	-	-	-	13
-	-	-	-	5-22280-0	SPRING, COMPRESSION	12
-	-	-	-	356885-4	STOP, SHEAR	11
-	-	-	-	1320921-1	SHEAR HOLDER, FRONT, CUT	10
-	-	-	-	454276-1	FLOATING SHEAR, FRONT	9
-	1	2	2	1633132-1	ANVIL, COMBINATION .090	8
-	-	-	-	-	-	7
-	-	-	-	-	-	6
-	-	-	-	1-455889-4	DEPRESSOR, SHEAR	5
-	-	-	-	238011-7	BLOCK, CRIMPER SPACER	4
-	1	2	2	1333278-2	CRIMPER, INSULATION F	3
-	-	-	-	-	-	2
-	1	2	2	2-456406-6	CRIMPER, WIRE PREMIUM	1