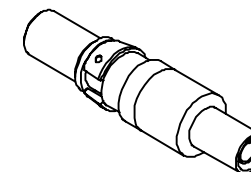
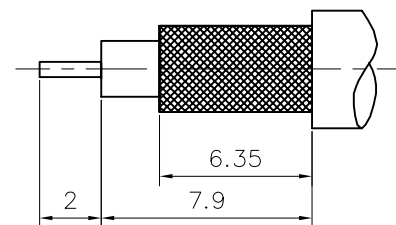
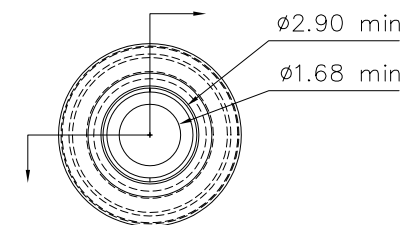
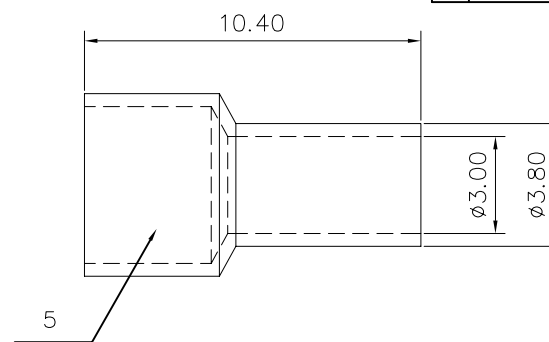
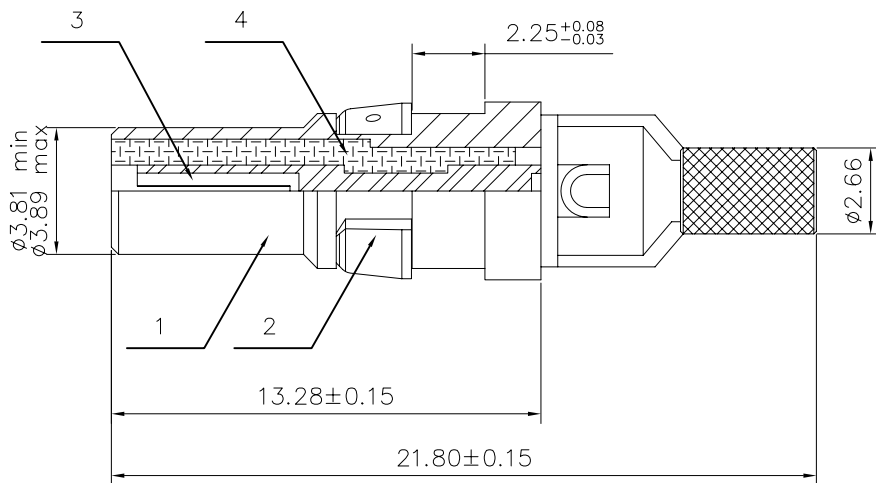


This document is the property of Amphenol Corporation and is delivered on the express condition that it is not to be disclosed, reproduced or used, in whole or in part, for manufacture or sale by anyone other than Amphenol Corporation without its prior consent, & that no right is granted to disclose or to use any information in this document.

Customer drawing

| REVISIONS | | | | |
|-----------|-----|----------------------------|------------|----------|
| SYM | ECN | DESCRIPTION | DATE | APPROVED |
| E | | trasfered from ASF drawing | 11/14/07 | IP |
| F | | add to more information | Jan./05/09 | IP |



Trim cable



NOTES:

MECHANICAL

Materials and Finish: referring to the table

ELECTRICAL :

- Voltage rating 300 V Rms to 50 Hz
- Current rating 0.5A
- Impedance: 50 Ohms Nominal
- Frequency Range: 0 to 1 GHz
- Insulation resistance: 5000 Megaohms Minimum
- Cable RG: 179B/U and RG316B/U

ENVIRONMENTAL

- Operating Temperature range -55 °C up to 125°C
- Vibration: MIL-STD-202, Method 204, Test Condition D
- Shock: MIL-STD-202, Method 213, Test Condition I
- Corrosion Resistance: MIL-STD-202, Method 101, Test Condition B

| | | |
|----------|-----------------|------------------------------------|
| 5 | brass | gold over 1.25um nickel |
| 4 | ferrule | Color white |
| 3 | Phosphor bronze | 0.75um min gold over 1.25um nickel |
| 2 | thermoplastic | Color black |
| 1 | brass | gold over 1.25um nickel |
| Sequence | Material | Remark |

| UNLESS OTHERWISE SPECIFIED TOLERANCES | | APPROVAL | | DATE |
|---------------------------------------|--------|---------------------|-----------|----------|
| U.S. | METRIC | DRAWN | Iss. peng | 11/14/07 |
| .X +/- | 0.20 | CHECKED | Ma.wang | 11/14/07 |
| .XX +/- | 0.10 | CHECKED | | |
| .XXX +/- | 0.05 | | | |
| FRACTIONS +/- | | | | |
| ANGLES +/- | 2' | | | |
| FOR MATERIALS AND FINISHES SEE NOTES | | DRAWING FILE : | | |
| REMOVE SHARP EDGES | | ANGLE OF PROJECTION | | |
| DIMENSIONS | | | | |
| U.S. | INCHES | | | |
| METRIC | MM | | | |

| | | |
|---|------------------------|--------------|
| | | |
| TITLE Straight shielded contacts Crimp ferrule | | |
| SIZE | DRAWING NO. | REV. |
| A4 | 4W00210C-C-L17DM537401 | F |
| SCALE | NONE | SHEET 1 OF 1 |