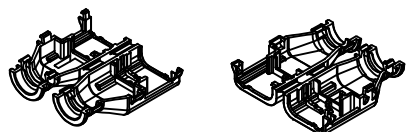


TABLE OF CONTENTS	
SHEET NO.	SHEET DESCRIPTION
1	NOTES AND BOM
2	CONFIGURATIONS
3	BACKSHELL DETAIL

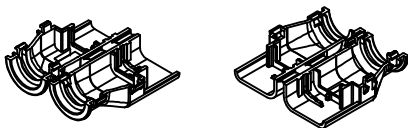
BILL OF MATERIALS (BOM)				
PART NUMBER	CIRCUIT SIZE	RIBS	STATUS	MATING ASSEMBLY DRAWING
34951-0610	2X3	YES	SALEABLE	SD-33472-061
34951-0620	2X3	NO	SALEABLE	SD-33472-061
34951-0810	2X4	YES	DESIGN CONCEPT	SD-33472-081
34951-0820	2X4	NO	DESIGN CONCEPT	SD-33472-081
34951-1210	2X6	YES	SALEABLE	SD-33472-121
34951-1220	2X6	NO	SALEABLE	SD-33472-121

BACKSHELL NOTES: VALID UNLESS OTHERWISE SPECIFIED

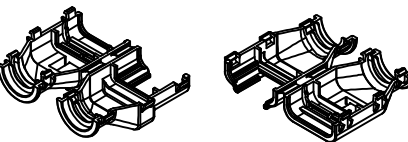
1. GENERAL:
- a. APPLICATION SPECIFICATION SEE: AS-34951-001
    - DESIGNED TO MATE WITH RECEPTACLE SEALED ASSEMBLY AS SPECIFIED IN BOM
    - COMPONENTS ARE OPTIONAL AND MUST BE PURCHASED SEPERATELY
    - BACKSHELL DESIGN IS OWNED BY SCHLEMMER
  - b. PRODUCT SPECIFICATION
    - THESE PRODUCTS ARE ONE TIME USE ONLY.
    - REMOVAL FORCE OF THE BACKSHELL FROM THE MOLEX CONNECTOR TO BE 100N MIN.
    - REMOVAL FORCE OF SLIT CONVOLUTE FROM THE WITH RIB OPTION BACKSHELLS TO BE 100N MIN.
    - REMOVAL FORCE OF UNSLIT CONVOLUTE FROM THE WITH RIB OPTION BACKSHELLS TO BE 100N MIN.
  - c. PACKAGING SPECIFICATION SEE PK-31302-118
  - d. PARTS MUST BE IN COMPLIANCE TO MOLEX CHEMICAL SUBSTANCES FOR PRODUCTS AND PACKAGING SPECIFICATION: OEHS-699000-300
  - e. DATA MUST BE SUBMITTED UNDER THE MOLEX PART NUMBER TO IMDS (COMPANY ID#13255)
  - f. FOLLOWING PRODUCTION CODES TO BE PRESENT
    - DATE CODE
    - MOLD CAVITY CODE
    - MOLEX LOGO
    - RECYCLE CODE
    - SUPPLIER PART NUMBER
2. DESIGN - MATERIALS:
- a. PA66 0% GLASS FILLED
  - b. BLACK
3. DESIGN GEOMETRY:
- a. THIS IS A 100% CAD GENERATED PART. THE CAD MATHEMATICAL DATA IS THE MASTER FOR THIS PART. FOR DIMENSIONAL OR ANY INFORMATION NOT SHOWN ON THIS DRAWING, ANALYZE THE CAD MODEL.
  - b. GEOMETRIC DIMENSIONS AND TOLERANCES PER ASME Y14.5M - 2009
  - c. CORNERS SHOWN AS SHARP TO BE R 0.1.
  - d. VISUAL DEFECTS SHALL MEET COSMETIC STANDARD PS-45499-002 (CLASS B).
  - e. DRAFT OF 2° PRESENT.
  - f. ALLOWABLE FLASH, PARTING LINES MISMATCH, EJECTOR PINS MARK, AND GATE VESTIGE TO BE +0.30 MAX PROTUSION.



2X3 RECEPTACLE



2X4 RECEPTACLE

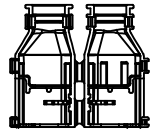


2X6 RECEPTACLE

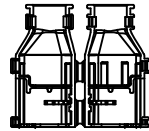
A6	UPDATED BILL OF MATERIALS
A5	UPDATED STATUS COLUMN
A4	MINOR NOMENCLATURE CLEAN UP
A3	UPDATED VIEWSET & NOTES
A2	UPDATED REFERENCE DRAWINGS
A1	UPDATED NOTES
A	INITIAL RELEASE
REV	DESCRIPTION

<b>ENTER DESCRIPTION</b> IEC NO. UAU2015-1693 DRAWN: BOURZENSKI, 2015/05/11 CHKD: APPR: VKOSHY, 2015/05/12 REV DESCRIPTION	<b>QUALITY SYMBOLS</b> ∇=0 ∇=0 ∇=0	<b>GENERAL TOLERANCES (UNLESS SPECIFIED)</b>		<b>DIMENSION STYLE</b> <b>MM ONLY</b>		SCALE <b>1:1</b>	DESIGN UNITS <b>METRIC</b>	THIRD ANGLE PROJECTION																			
		<table border="1"> <tr><th></th><th>mm</th><th>INCH</th></tr> <tr><td>4 PLACES</td><td>±---</td><td>±---</td></tr> <tr><td>3 PLACES</td><td>±---</td><td>±---</td></tr> <tr><td>2 PLACES</td><td>±0.1</td><td>±---</td></tr> <tr><td>1 PLACE</td><td>±0.3</td><td>±---</td></tr> <tr><td>0 PLACE</td><td>±---</td><td>±---</td></tr> </table>			mm	INCH	4 PLACES	±---	±---	3 PLACES	±---	±---	2 PLACES	±0.1	±---	1 PLACE	±0.3	±---	0 PLACE	±---	±---	DRAWN BY DATE DAHALL 2013/03/27		CHECKED BY DATE		TITLE <b>MX150 RECEPTACLE DUAL ROW BACKSHELL</b>	
			mm	INCH																							
		4 PLACES	±---	±---																							
3 PLACES	±---	±---																									
2 PLACES	±0.1	±---																									
1 PLACE	±0.3	±---																									
0 PLACE	±---	±---																									
ANGULAR ± 3 °		APPROVED BY DATE VKOSHY 2013/04/08		MATERIAL NO. <b>SEE BOM</b>		DOCUMENT NO. <b>SD-34951-0001</b>																					
DRAFT WHERE APPLICABLE MUST REMAIN WITHIN DIMENSIONS		SIZE <b>D</b>		THIS DRAWING CONTAINS INFORMATION THAT IS PROPRIETARY TO MOLEX INCORPORATED AND SHOULD NOT BE USED WITHOUT WRITTEN PERMISSION		SHEET NO. <b>1 OF 3</b>																					

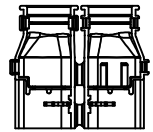
CONFIGURATION



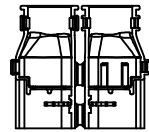
34951-0610  
2X3 RECEPTACLE WITH RIBS



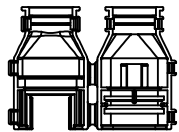
34951-0620  
2X3 RECEPTACLE WITHOUT RIBS



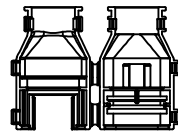
34951-0810  
2X4 RECEPTACLE WITH RIBS



34951-0820  
2X4 RECEPTACLE WITHOUT RIBS



34951-1210  
2X6 RECEPTACLE WITH RIBS



34951-1220  
2X6 RECEPTACLE WITHOUT RIBS

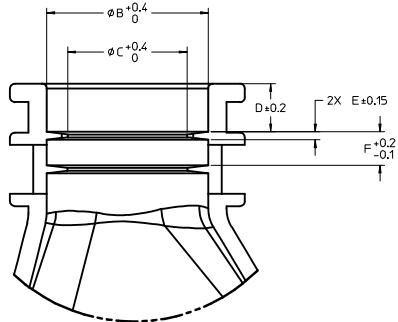
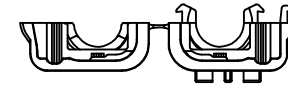
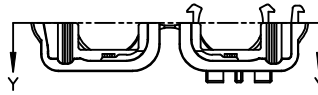
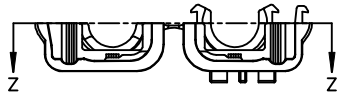
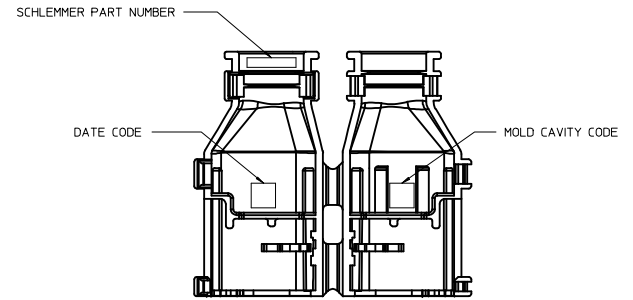
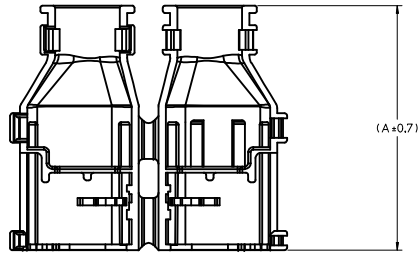
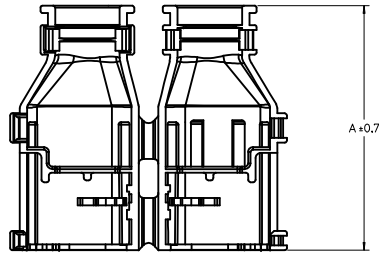
<b>ENTER DESCRIPTION</b> IEC NO. UAU2015-1693 DRAWN BY BURUSZENSKI, 2015/05/11 CHKD: APPR: VKOSHY 2015/05/12	QUALITY SYMBOLS ▽=0 ▽=0 ▽=0	GENERAL TOLERANCES (UNLESS SPECIFIED) <table border="1"> <thead> <tr> <th></th> <th>mm</th> <th>INCH</th> </tr> </thead> <tbody> <tr> <td>4 PLACES</td> <td>± 0.1</td> <td>± 0.004</td> </tr> <tr> <td>3 PLACES</td> <td>± 0.15</td> <td>± 0.006</td> </tr> <tr> <td>2 PLACES</td> <td>± 0.2</td> <td>± 0.008</td> </tr> <tr> <td>1 PLACE</td> <td>± 0.3</td> <td>± 0.012</td> </tr> <tr> <td>0 PLACE</td> <td>± 0.4</td> <td>± 0.016</td> </tr> </tbody> </table> ANGULAR ± 3° DRAFT WHERE APPLICABLE MUST REMAIN WITHIN DIMENSIONS		mm	INCH	4 PLACES	± 0.1	± 0.004	3 PLACES	± 0.15	± 0.006	2 PLACES	± 0.2	± 0.008	1 PLACE	± 0.3	± 0.012	0 PLACE	± 0.4	± 0.016	DIMENSION STYLE <b>MM ONLY</b>	SCALE <b>1:1</b>	DESIGN UNITS <b>METRIC</b>	THIRD ANGLE PROJECTION
		mm	INCH																					
	4 PLACES	± 0.1	± 0.004																					
	3 PLACES	± 0.15	± 0.006																					
2 PLACES	± 0.2	± 0.008																						
1 PLACE	± 0.3	± 0.012																						
0 PLACE	± 0.4	± 0.016																						
DRAWN BY DAHALL	DATE 2013/03/27	CHECKED BY DATE	TITLE <b>MX150 RECEPTACLE                  DUAL ROW                  BACKSHELL</b>																					
APPROVED BY VKOSHY	DATE 2013/04/08	MATERIAL NO. <b>SEE BOM</b>																						
SIZE <b>D</b>		DOCUMENT NO. <b>SD-34951-0001</b>																						

SHEET NO.  
2 OF 3

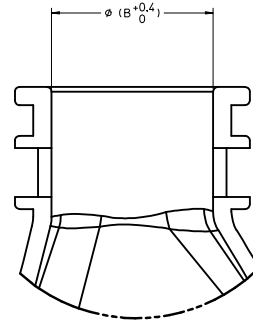
**molex**

THIS DRAWING CONTAINS INFORMATION THAT IS PROPRIETARY TO MOLEX INCORPORATED AND SHOULD NOT BE USED WITHOUT WRITTEN PERMISSION

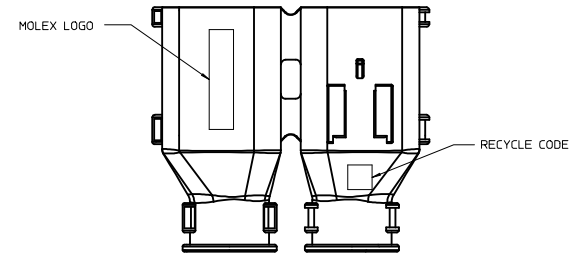
BACKSHELL DETAIL



Partial Z-Z  
SCALE 5:1  
WITH RIBS



Partial Y-Y  
SCALE 5:1  
WITHOUT RIBS



PART NUMBER	DIMENSIONS					
	A	B	C	D	E	F
34951-0610	50	13.2	9.8	3.9	0.65	2.7
34951-0620	50	13.2	N/A	N/A	N/A	N/A
34951-1210	50	17.7	13.6	3.5	0.83	3.1
34951-1220	50	17.7	N/A	N/A	N/A	N/A

<b>ENTER DESCRIPTION</b> IEC NO. UAU2015-1693 DRAWN BY: BURZESKI, 2015/05/11 CHKD: CHYK APPR: VKOSHY 2015/05/12	QUALITY SYMBOLS	GENERAL TOLERANCES (UNLESS SPECIFIED)	DIMENSION STYLE	SCALE	DESIGN UNITS	THIRD ANGLE PROJECTION	
	$\nabla=0$ $\nabla=0$ $\nabla=0$	mm INCH 4 PLACES # --- # --- 3 PLACES # --- # --- 2 PLACES # 0.1 # --- 1 PLACE # 0.3 # --- 0 PLACE # --- # ---	MM ONLY	2:1	METRIC		
	DRAFT WHERE APPLICABLE MUST REMAIN WITHIN DIMENSIONS	ANGULAR $\pm 3^\circ$	DRAWN BY: DAHALL DATE: 2013/03/27 CHECKED BY: DATE:	APPROVED BY: VKOSHY DATE: 2013/04/08	MATERIAL NO. SEE BOM DOCUMENT NO. SD-34951-0001	TITLE: MX150 RECEPTACLE DUAL ROW BACKSHELL 	SHEET NO. 3 OF 3
	SIZE D	THIS DRAWING CONTAINS INFORMATION THAT IS PROPRIETARY TO MOLEX INCORPORATED AND SHOULD NOT BE USED WITHOUT WRITTEN PERMISSION					