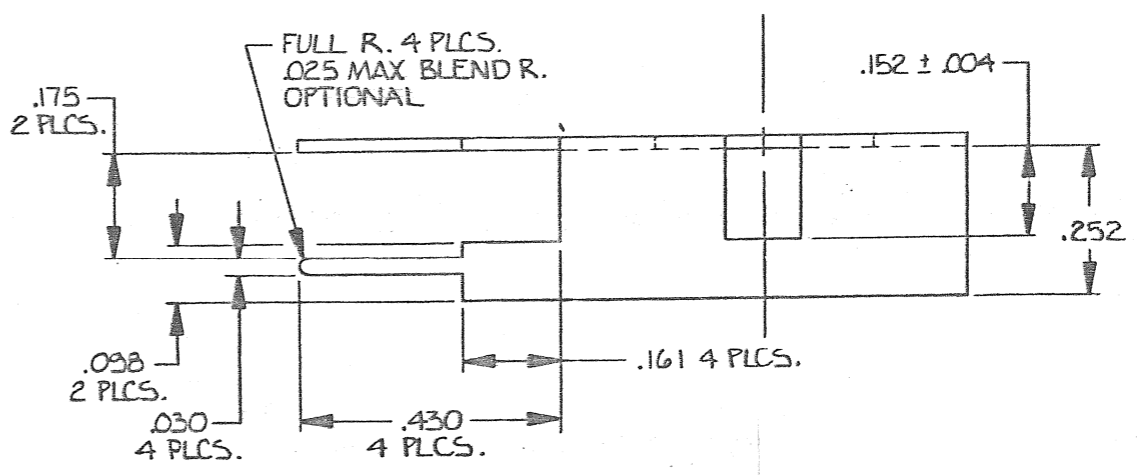
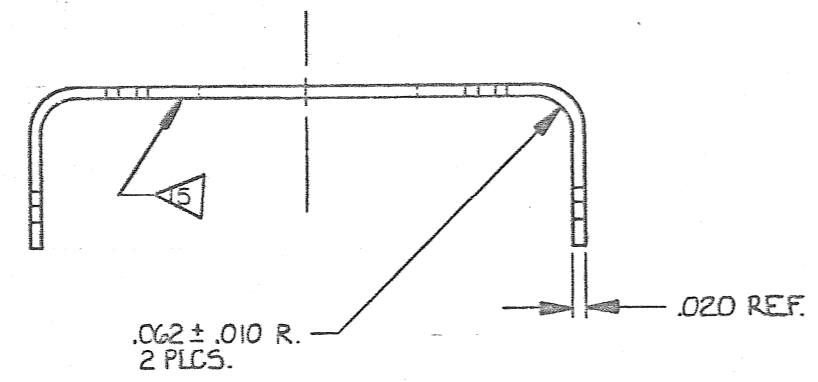
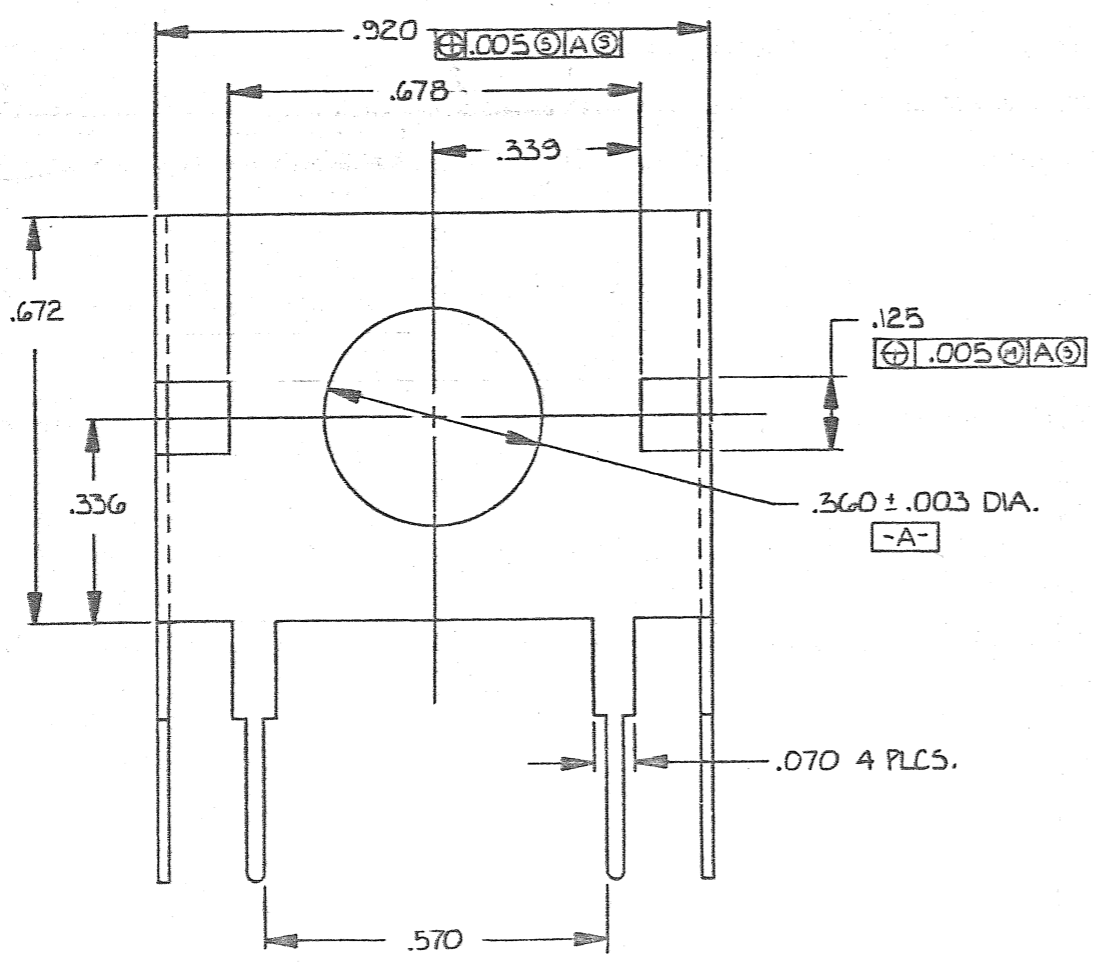


UNCONTROLLED COPY Expires: 6/25/2016

REVISIONS			03168-17700	
REV. LTR.	E.O. NO.	DESCRIPTION	MADE BY	CHECKED BY
A	P2645	RELEASE TO PROTOTYPE	SCP 1/16/87	[Signature]
B	P2790	B1-RELEASE TO TOOLING #.	JL 7/28/87	[Signature]
C	P4677	C1- RELEASED TO PRODUCTION C2- ADDED NOTE 14 C3-ADDED NOTE 15	LU 6/9/91	PW 6/9/91



P/N - 01

15. .005 MAX BURR ACCEPTABLE THIS SIDE ONLY.
14. SOLDERABILITY PER MIL STD 202, METHOD 208, EXCEPT COVERAGE TO BE 80%, DISREGARD CUT EDGES OF LEGS.
13. MAT'L TO BE BRASS STRIP CDA 260. 1/2 HARD .020 ± .002 THK. TIN PLATE PER MIL-T-1027 TYPE I .0001 TO .0003 THICK.
12. .010 MAX R. UNLESS OTHERWISE SPECIFIED
- NOTES:**

THIS PRINT DISCLOSES SUBJECT MATTER IN WHICH BOURNS, INC. HAS PROPRIETARY RIGHTS. THE RECEIPT OR POSSESSION OF THIS PRINT DOES NOT CONFER, TRANSFER OR LICENSE THE USE OF THE DESIGN OR TECHNICAL INFORMATION SHOWN HEREIN. REPRODUCTION OF THIS PRINT OR ANY INFORMATION CONTAINED HEREIN OR MANUFACTURE OF ANY ARTICLE THEREFROM, FOR DISCLOSURE TO OTHERS, IS FORBIDDEN, EXCEPT BY SPECIFIC WRITTEN PERMISSION FROM BOURNS, INC.

03168-17701	16140-31302	13	SIGNATURE DATE		BOURNS, Inc. PRECISIONS/CONTROLS DIVISION		
PART NUMBER	MATERIAL	MATERIAL DESCRIPTION	DRAWN BY	S. PARRIS	1/16/87	TITLE	
NOTES EXCEPT AS SPECIFIED			CHECKED BY	[Signature]	7-10-87	BRACKET	
1 DIMENSION IN INCHES (MILLIMETERS) PER ANSI-Y14.5			APP'D BY	[Signature]	7-1-87	SIZE	CODE IDENT NO.
2 SURFACES SHALL BE FLAT WITHIN .001 IN/IN (0.001 MM/MM)			TOL. STUDY			C	57921
3 ANGLE TOLERANCE ± 1:2°			APP'D PLNT. MFG.			DWG. NO.	03168-17700
4 DEBURR EDGES .005 (0.127) MAX (0.051)						SCALE	MODEL
5 MAX BURR PERMITTED .002 (0.051)						5X	PL00
6 INSIDE RAD .005 (0.127) MAX						SHEET 1 OF 1	
7 OUTSIDE RAD .005 (0.127) MAX							
8 TOLERANCES .XX ± .02 (0.50)							
.XXX ± .005 (0.127)							
.XXXX ± .0005 (0.0127)							
9 SURFACE ROUGHNESS PER ANSI B46.1 TO BE 5μ							
10 DIAMETERS WITH SAME CENTERLINE TO BE CONCENTRIC WITHIN .005 (0.127) TIR							
11 FEATURES WITH SAME CENTERLINE TO BE SYMMETRICAL WITHIN .005 (0.127)							
MATERIAL	HEAT TREAT	FINISH					
13							

TEL: 603-883-1111 FAX: 603-883-1112

EC-5319 (6/79)

DRAWING NO. ONLY 03168-17700