

Technical specification:

Rated voltage:	3pos
IEC 61076-2-101	30 V
Current rating:	4 A at 40°C
IEC 61076-2-101	
Insulation resistance:	>=100 MΩ
IEC 60512	
Pollution degree:	3/2
IEC 60664-1	
Degree of protection:	IP 67, in mated condition
IEC 60529	
Temperature range:	-30°C ... +80°C
IEC 60664-1	
Mating cycles:	>=100
IEC 60512-9a	

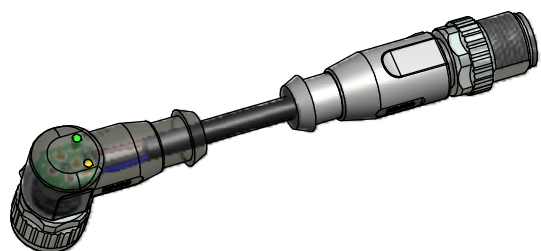
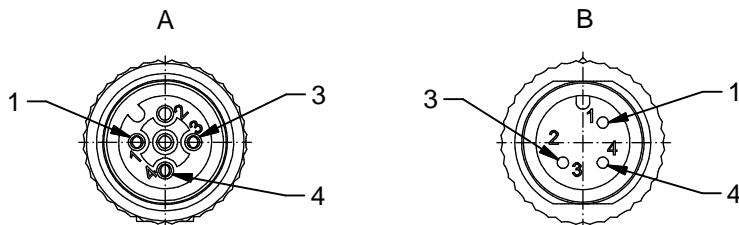
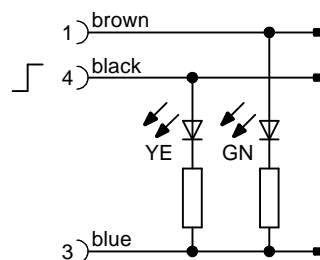
Materials:

Contact:	CuZn
Contact plating:	Nickel, gold plated
Contact carrier:	TPU GF, UL 94
Sealing:	FPM
Coupling nut/ screw:	GD-Zn, nickel plated
Moulding body axial:	TPU, UL 94, grey
Moulding body angled:	TPU, UL 94, translucent

Installation specification:

Recommended torque:	0,6 Nm
Conec installation tool:	Torque wrench: 36-000200 Insert across flats 13: 36-000220

Contact assignment:



Part no:	Description:	Length L:	Cable:
43-10884	SAL - 12 - RKW3 - RS3 - 2L - 0,3 / K1	0,3m	TPU, UL 20549, black, 3x0,34mm ² Cable: 781-K13300
43-10885	SAL - 12 - RKW3 - RS3 - 2L - 0,6 / K1	0,6m	
43-10886	SAL - 12 - RKW3 - RS3 - 2L - 1,5 / K1	1,5m	
43-10887	SAL - 12 - RKW3 - RS3 - 2L - 3 / K1	3m	
43-xxxxx	SAL - 12 - RKW3 - RS3 - 2L - ... / K1	x	

D see data sheet cable

DO NOT ALTER CAD DRAWING BY HAND	Directive 2002/95/EC RoHS compliant	Index: b 01.02.11 VF Ä3767 Coupling nut/ screw modified, spanner flats added, data sheet modified	dim. in mm	title: Connecting cable M12x1, female connector angled with LED - male connector axial												
		tolerance of cable: L ≤ 4m: L + 40mm L > 4m: L + 1%														
		THIS DRAWING MAY NOT BE COPIED OR REPRODUCED IN ANY WAY, AND MAY NOT BE PASSED ON TO A THIRD PARTY WITHOUT WRITTEN PERMISSION. OWNERSHIP AND COPYRIGHT OF CONEC GmbH	<table border="1"> <tr> <td></td> <td>date</td> <td>name</td> </tr> <tr> <td>drawn</td> <td>14.03.07</td> <td>Fromm</td> </tr> <tr> <td>appd.</td> <td>14.03.07</td> <td>Mankopf</td> </tr> </table>			date	name	drawn	14.03.07	Fromm	appd.	14.03.07	Mankopf		dwg no: 43K1A429	
					date	name										
drawn	14.03.07	Fromm														
appd.	14.03.07	Mankopf														
			part no: see table													