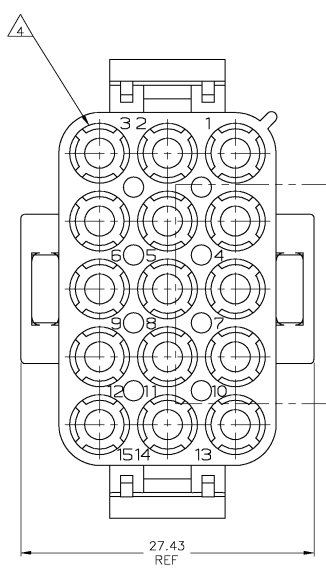
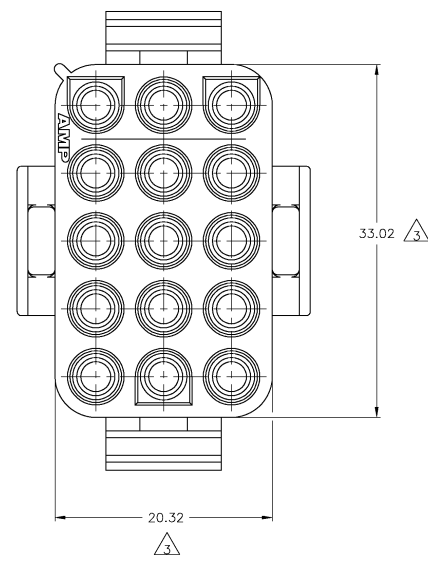
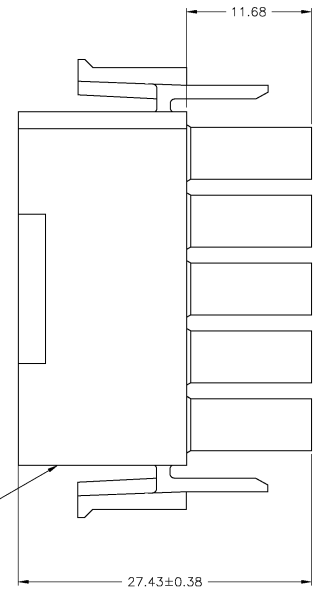


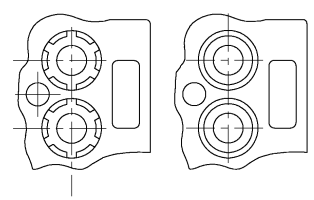
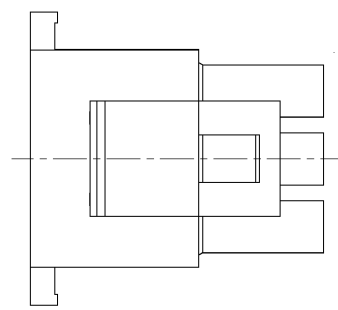
LOC	DSRT	REVISIONS					
		P	LR	DESCRIPTION	DATE	DW	APP
A1		A		RELEASED	24JAN2008	J.S.	L.B.



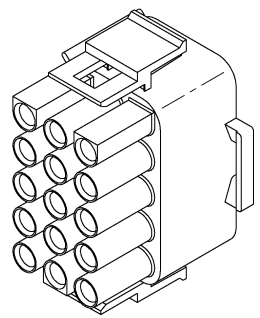
SEE DETAIL A



- MATES WITH APPROPRIATE UNIVERSAL MATE-N-LOK™ CAP OR HEADER.
- SMALL NICKS ARE PERMITTED ON THE CIRCUIT TOWERS WHICH COULD INCREASE THE INITIAL HOUSING MATING FORCE BY UP TO 4.4 NEWTONS [1.0 LBS]. NO INDIVIDUAL NICKED TOWER SHALL INCREASE THIS FORCE BY OVER 2.2 NEWTONS [.5 LBS].
- DIMENSION INDICATED IS AS MOLDED. ADDITIONAL GROWTH DUE TO SUBSEQUENT MOISTURE ABSORPTION MAY OCCUR.
- FOUR RIBS EQUALLY SPACED, NO SPECIFIC ORIENTATION. NO RIBS OR SIX RIBS EQUALLY SPACED, NO SPECIFIC ORIENTATION, OPTIONAL.
- NOT MANUFACTURED IN U.S.
- UNDERWRITERS RECOGNIZED COMPONENT LOGO AND CSA CERTIFICATION LOGO TO BE LOCATED ONCE ON EACH SIDE OF HOUSING.
- MATERIAL CORRESPONDING TO THE REQUIREMENTS OF IEC 60335 (INCL GLOW WIRE TEST 750°C WITHOUT FLAME)



DETAIL A
OPTIONAL CONSTRUCTION



3-DIMENSIONAL MODEL
NOT TO SCALE

MM	IN
33.02	1.300
27.43	1.080
20.32	.800
11.68	.460
0.38	.015
0.13	.005

CONVERSION TABLE



NATURAL	1863007-1
COLOR	PART NUMBER

THIS DRAWING IS A CONTROLLED DOCUMENT.

DIMENSIONS: mm 0 P.L.C. # - 1 P.L.C. # - 2 P.L.C. # 0.13 3 P.L.C. # - 4 P.L.C. # - ANGLE # 0.287 FINISH -	TO DIMENSIONS UNLESS OTHERWISE SPECIFIED: DWG J. SALO 24JAN2008 CHK J. LAZARO 24JAN2008 APPV L. BATLLO 24JAN2008 PRODUCT SPEC APPLICATION SPEC REIGHT - MATERIAL PAB CUSTOMER DRAWING	Tyco Electronics Tyco Electronics AMP Espana S.A. Barcelona, Spain. PLUG, 15 CIRCUIT, UNIVERSAL MATE-N-LOK™ SIZE (CASE CODE) DRAWING NO. RESTRICTED TO A1 00779 ©=1863007 SCALE 4:1 SHEET 1 OF 1 REV A
-----------------------------------------------------------------------------------------------------------------------------------	---------------------------------------------------------------------------------------------------------------------------------------------------------------------------------------------------------------	--------------------------------------------------------------------------------------------------------------------------------------------------------------------------------------------------------------------------------