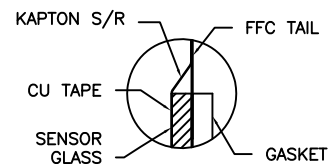
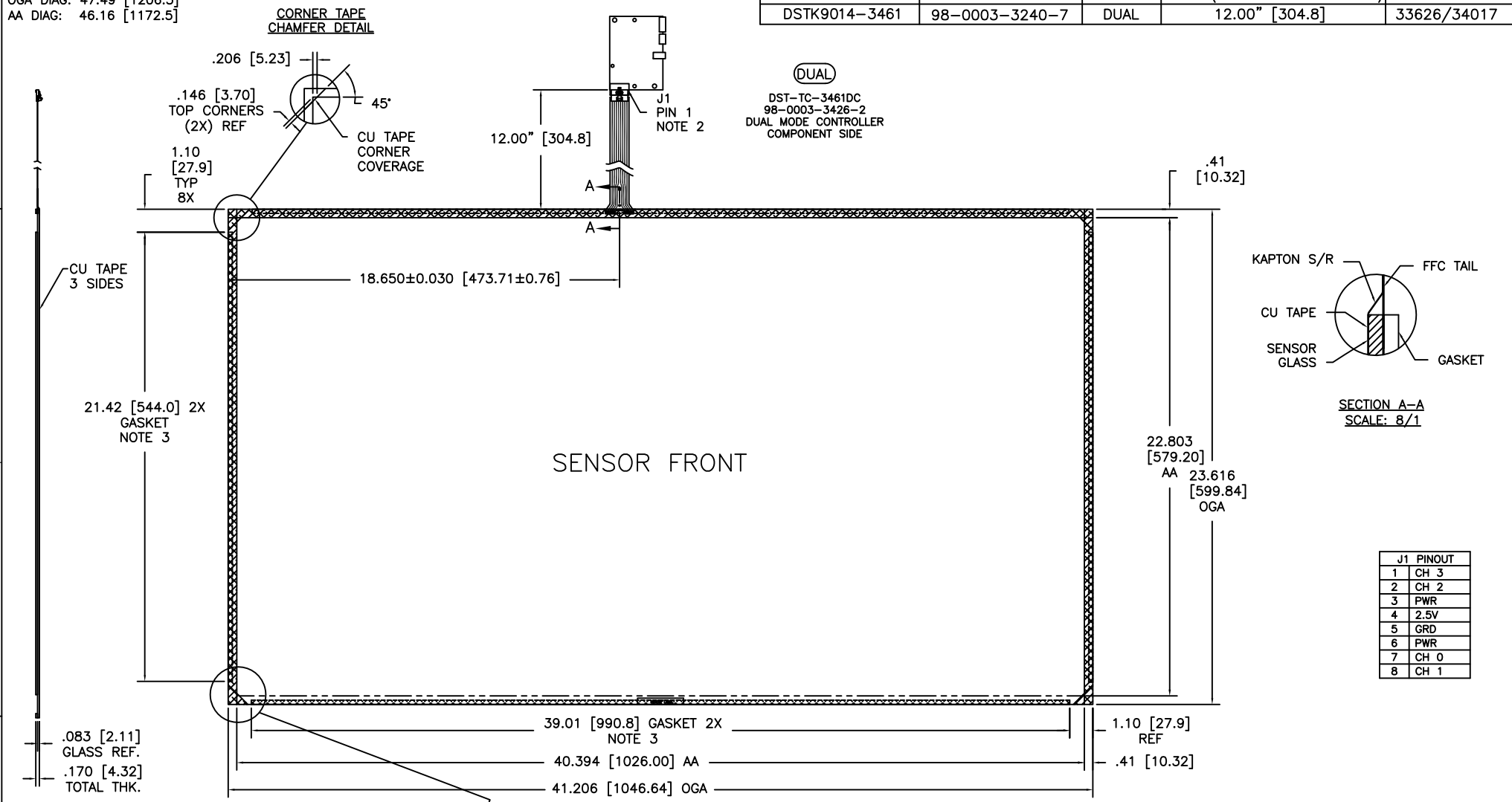


OGA DIAG: 47.49 [1206.3]
 AA DIAG: 46.16 [1172.5]

TOP LEVEL NUMBER	SKU NUMBER	TYPE	DIM "A" (TOTAL GLASS TO FLEXTAIL CONN)	PRODUCT SPEC
DSTK9014-3461	98-0003-3240-7	DUAL	12.00" [304.8]	33626/34017



J1 PINOUT	
1	CH 3
2	CH 2
3	PWR
4	2.5V
5	GRD
6	PWR
7	CH 0
8	CH 1

- NOTES:
- WEIGHT OF GLASS IN GRAMS: 3308±10%
 - 8 PIN AMP CONNECTOR
 LATCH STYLE HOUSING P/N: 487526-7
 TIN CONTACTS P/N: 2-487406-4
 HOUSING ORIENTED WITH LATCH UP
 - GASKET ON SENSOR BACKSIDE

05 REVISE PER CO 030743	7/09 ISB
04 REVISE PER CO 029810	11/08 JAH
MKT DWG DST2270DX 46"-1	
<small>DO NOT SCALE DRAWING</small>	<small>1 = 1</small>
<small>DESIGNED BY: A. Hartofella</small>	<small>DATE: 1/08</small>
<small>APP'D BY: [Signature]</small>	<small>DATE: 1/08</small>
<small>REV: B</small>	<small>1 OF 1</small>
<small>35107-MKT</small>	<small>05</small>