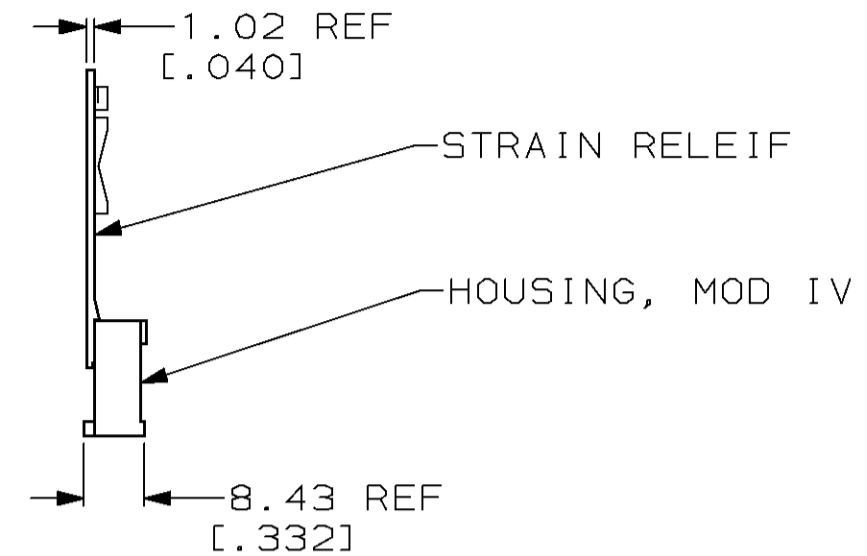
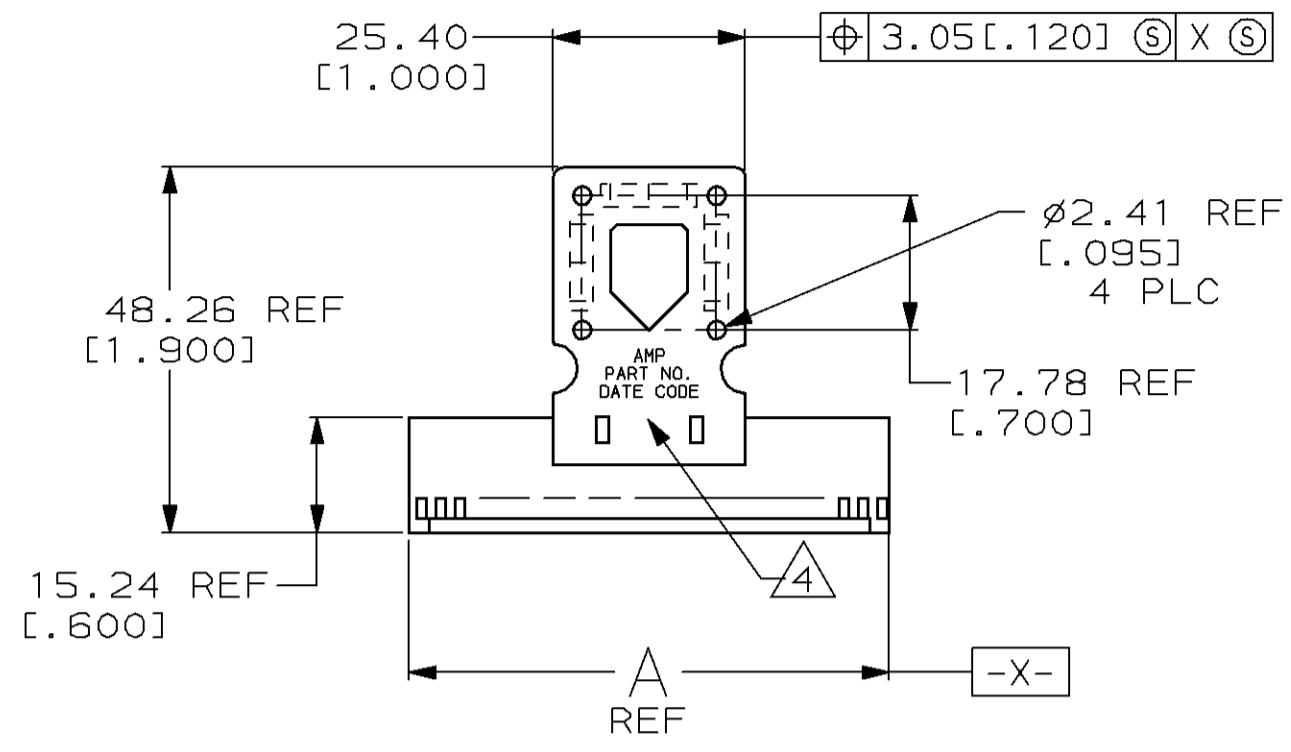
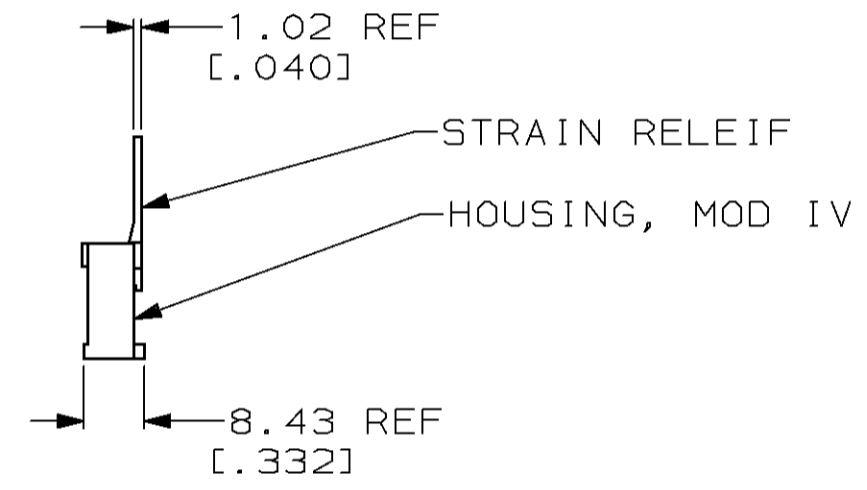
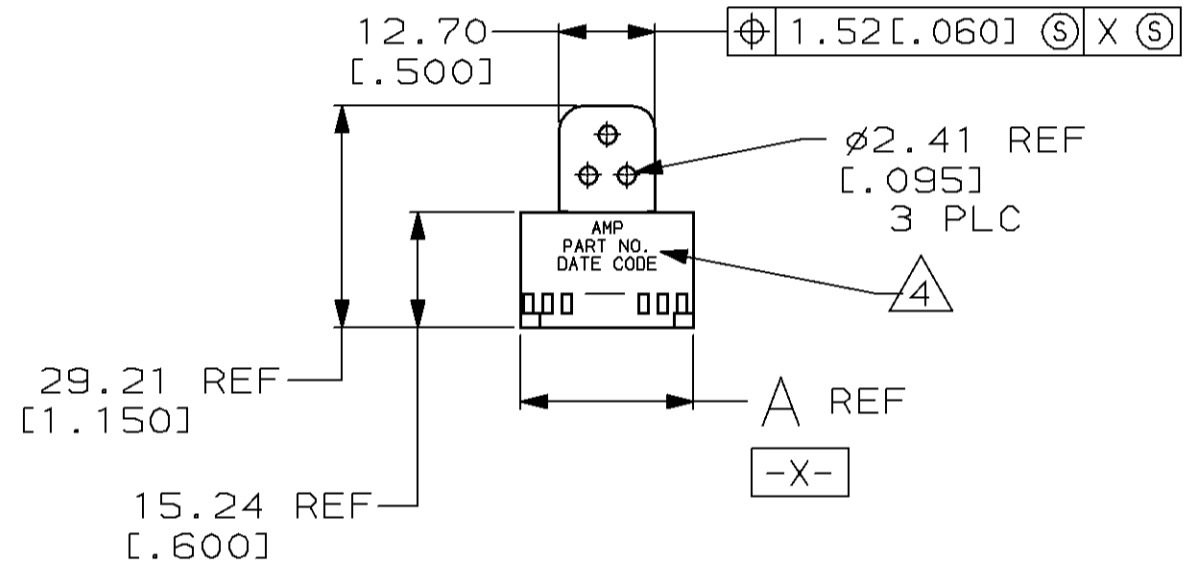


Loc	DIST	P	F	REVISIONS				
				ZONE	LTR	DESCRIPTION	DATE	APPD
AD	39			F		REV PER 0010-0684-94	5-23-94	PS
				G		REV PER 0010-0932-94	6-27-94	PS
				H		OBS -8 PER 0010-0665-96	30DEC96	JH

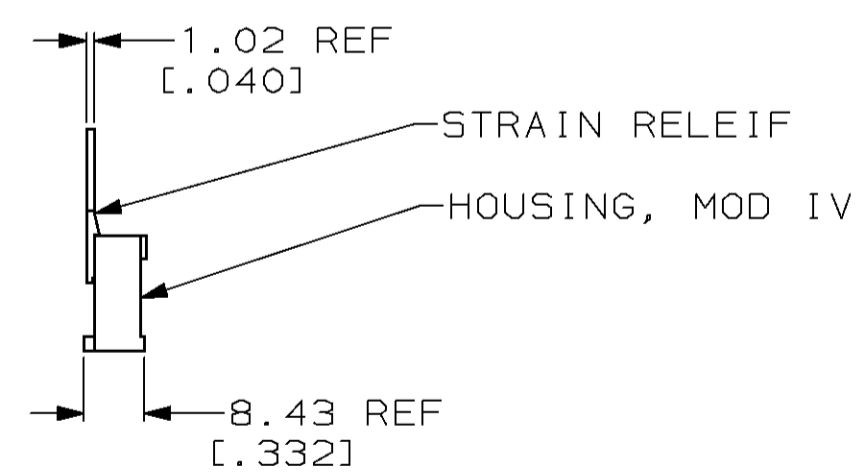
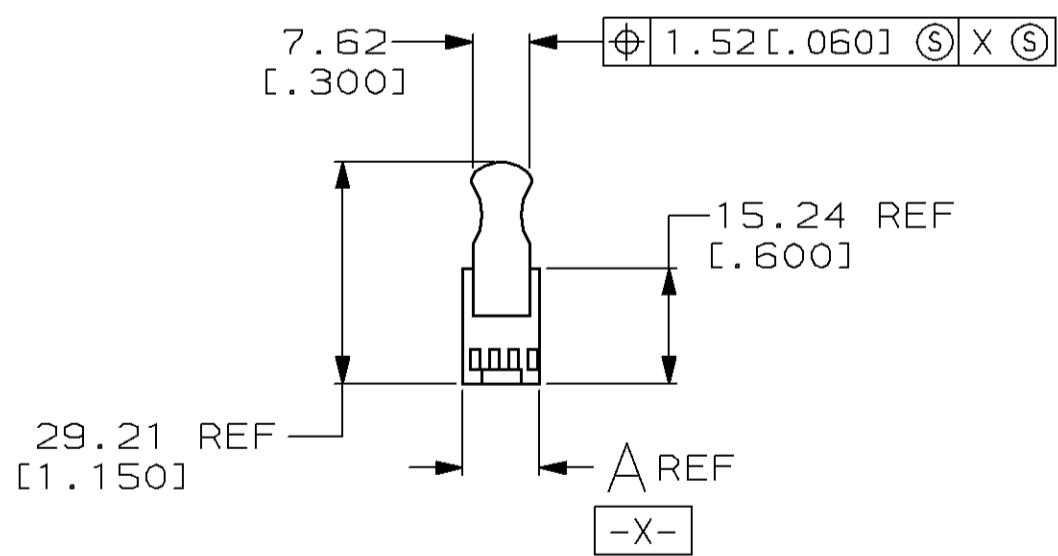
TYPE I



TYPE II



TYPE III



1. STRAIN RELIEF TO BE ULTRASONICALLY WELDED TO HOUSING.
2. ASSEMBLIES 8 POSN AND SMALLER WILL NOT BE MARKED.
3. OBSOLETE PART NUMBER.
4. "AMP", PART NO., AND DATE CODE MARKED (WHITE) 1.58±0.38[.062±.015] HIGH CHARACTERS IN AREA SHOWN.

THIS DRAWING IS A CONTROLLED DOCUMENT FOR AMP INCORPORATED. IT IS SUBJECT TO CHANGE AND THE CONTROLLING ENGINEERING ORGANIZATION SHOULD BE CONTACTED FOR THE LATEST REVISION.


DO NOT SCALE PRINT. UNLESS SPECIFIED DIMENSIONS IN mm [INCHES] TOLERANCES ON : 2 PLC DEC ± 0.13[.005] 3 PLC DEC ± - ANGLES ± -		DR 6-20-94 E. BRANDBERG	PART NO	
MATERIAL FLAME RETARDANT GLASS FILLED NYLON COLOR: BLACK	CHK 6-20-94 P. SREMCICH	APPD 6-20-94 P. SREMCICH	AMP Incorporated Harrisburg, PA 17105-3608	
FINISH -	APPD 6-20-94 D. DUPLER	PRODUCT SPEC -	NAME HOUSING ASSEMBLY, MOD IV 2.54[.100] X 2.54[.100] ⚡ W/POLARIZATION AND STRAIN RELIEF	
WEIGHT -	APPLICATION SPEC -	SIZE C	CAGE CODE 00779	DRAWING NO G=102184
		SCALE 1:1	SHEET 1 OF 2	

THIS DRAWING IS UNPUBLISHED. RELEASED FOR PUBLICATION, 19 .  
 © COPYRIGHT 19 BY AMP INCORPORATED. ALL INTERNATIONAL RIGHTS RESERVED.

LOC	DIST	P	F	ZONE	LTR	DESCRIPTION	DATE	APPD
AD	39				H	SEE SHEET 1	-	-

NONE	I	81.28 [3.200]	6-87977-2	64	△	6-102184-2
ALL	I	81.28 [3.200]	6-87977-2	64	△	6-102184-1
NONE	I	73.66 [2.900]	6-87977-0	58	△	6-102184-0
ALL	I	73.66 [2.900]	6-87977-0	58	△	5-102184-9
NONE	I	71.12 [2.800]	5-87977-8	56	△	5-102184-8
ALL	I	71.12 [2.800]	5-87977-8	56	△	5-102184-7
NONE	I	60.96 [2.400]	5-87977-6	48	△	5-102184-6
ALL	I	60.96 [2.400]	5-87977-6	48	△	5-102184-5
NONE	I	91.44 [3.600]	5-87977-4	72	△	5-102184-4
NONE	I	88.90 [3.500]	5-87977-3	70	△	5-102184-3
NONE	I	83.82 [3.300]	5-87977-2	66	△	5-102184-2
NONE	I	76.20 [3.000]	5-87977-1	60	△	5-102184-1
NONE	I	68.58 [2.700]	5-87977-0	54	△	5-102184-0
NONE	I	66.04 [2.600]	4-87977-9	52	△	4-102184-9
NONE	I	63.50 [2.500]	4-87977-8	50	△	4-102184-8
NONE	I	55.88 [2.200]	4-87977-7	44	△	4-102184-7
NONE	I	53.34 [2.100]	4-87977-6	42	△	4-102184-6
NONE	I	50.80 [2.000]	4-87977-5	40	△	4-102184-5
NONE	I	48.26 [1.900]	4-87977-4	38	△	4-102184-4
NONE	I	45.72 [1.800]	4-87977-3	36	△	4-102184-3
NONE	I	43.18 [1.700]	4-87977-2	34	△	4-102184-2
NONE	I	40.64 [1.600]	4-87977-1	32	△	4-102184-1
NONE	I	38.10 [1.500]	4-87977-0	30	△	4-102184-0
NONE	I	35.56 [1.400]	3-87977-9	28	△	3-102184-9
NONE	I	33.02 [1.300]	3-87977-8	26	△	3-102184-8
NONE	I	30.48 [1.200]	3-87977-7	24	△	3-102184-7
NONE	I	27.94 [1.100]	3-87977-6	22	△	3-102184-6
NONE	I	25.40 [1.000]	3-87977-5	20	△	3-102184-5
NONE	II	22.86 [.900]	3-87977-4	18	△	3-102184-4
NONE	II	20.32 [.800]	3-87977-3	16	△	3-102184-3
NONE	II	17.78 [.700]	3-87977-2	14	△	3-102184-2
MARKING	TYPE	A	HOUSING PART NO.	NO. OF POSN		PART NUMBER

NONE	II	15.24 [.600]	3-87977-1	12	△	3-102184-1
NONE	II	12.70 [.500]	3-87977-0	10	△	3-102184-0
NONE	III	10.16 [.400]	2-87977-9	8		2-102184-9
NONE	III	7.62 [.300]	2-87977-8	6		2-102184-8
ALL	I	91.44 [3.600]	5-87977-4	72	△	2-102184-7
ALL	I	88.90 [3.500]	5-87977-3	70	△	2-102184-6
ALL	I	83.82 [3.300]	5-87977-2	66	△	2-102184-5
ALL	I	76.20 [3.000]	5-87977-1	60	△	2-102184-4
ALL	I	68.58 [2.700]	5-87977-0	54	△	2-102184-3
ALL	I	66.04 [2.600]	4-87977-9	52	△	2-102184-2
ALL	I	63.50 [2.500]	4-87977-8	50	△	2-102184-1
ALL	I	55.88 [2.200]	4-87977-7	44	△	2-102184-0
ALL	I	53.34 [2.100]	4-87977-6	42	△	1-102184-9
ALL	I	50.80 [2.000]	4-87977-5	40	△	1-102184-8
ALL	I	48.26 [1.900]	4-87977-4	38	△	1-102184-7
ALL	I	45.72 [1.800]	4-87977-3	36	△	1-102184-6
ALL	I	43.18 [1.700]	4-87977-2	34	△	1-102184-5
ALL	I	40.64 [1.600]	4-87977-1	32	△	1-102184-4
ALL	I	38.10 [1.500]	4-87977-0	30	△	1-102184-3
ALL	I	35.56 [1.400]	3-87977-9	28	△	1-102184-2
ALL	I	33.02 [1.300]	3-87977-8	26	△	1-102184-1
ALL	I	30.48 [1.200]	3-87977-7	24	△	1-102184-0
ALL	I	27.94 [1.100]	3-87977-6	22	△	102184-9
ALL	I	25.40 [1.000]	3-87977-5	20	△	102184-8
ALL	II	22.86 [.900]	3-87977-4	18		102184-7
ALL	II	20.32 [.800]	3-87977-3	16	△	102184-6
ALL	II	17.78 [.700]	3-87977-2	14	△	102184-5
ALL	II	15.24 [.600]	3-87977-1	12	△	102184-4
ALL	II	12.70 [.500]	3-87977-0	10	△	102184-3
ALL	III	10.16 [.400]	2-87977-9	8	△	102184-2
ALL	III	7.62 [.300]	2-87977-8	6	△	102184-1
MARKING	TYPE	A	HOUSING PART NO.	NO. OF POSN		PART NUMBER

DO NOT SCALE PRINT. UNLESS SPECIFIED DIMENSIONS IN mm [INCHES] TOLERANCES ON : 2 PLC DEC ± 0.13[.005] 3 PLC DEC ± - ANGLES ± -	DR 6-20-94 E. BRANDBERG	 AMP Incorporated Harrisburg, PA 17105-3608
	CHK 6-20-94 P. SREMCICH	
	APPD 6-20-94 P. SREMCICH	
	APPD 6-20-94 D. DUPLER	
MATERIAL FLAME RETARDANT GLASS FILLED NYLON COLOR: BLACK	PRODUCT SPEC -	NAME HOUSING ASSEMBLY, MOD IV 2.54[.100] X 2.54[.100] ⚡ W/POLARIZATION AND STRAIN RELIEF
FINISH -	APPLICATION SPEC -	SIZE C
	WEIGHT -	CAGE CODE 00779
		DRAWING NO G=102184
		SCALE 2:1
		SHEET 20F2

THIS DRAWING IS A CONTROLLED DOCUMENT FOR AMP INCORPORATED. IT IS SUBJECT TO CHANGE AND THE CONTROLLING ENGINEERING ORGANIZATION SHOULD BE CONTACTED FOR THE LATEST REVISION.