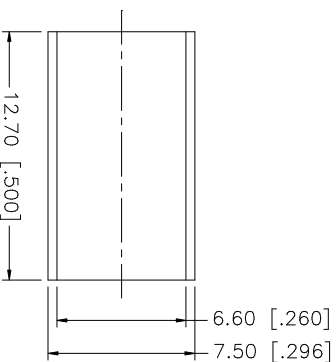
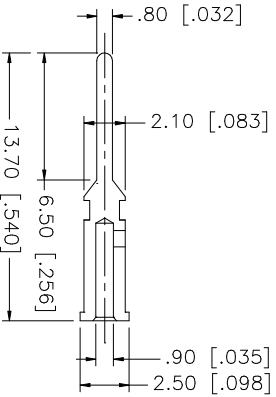
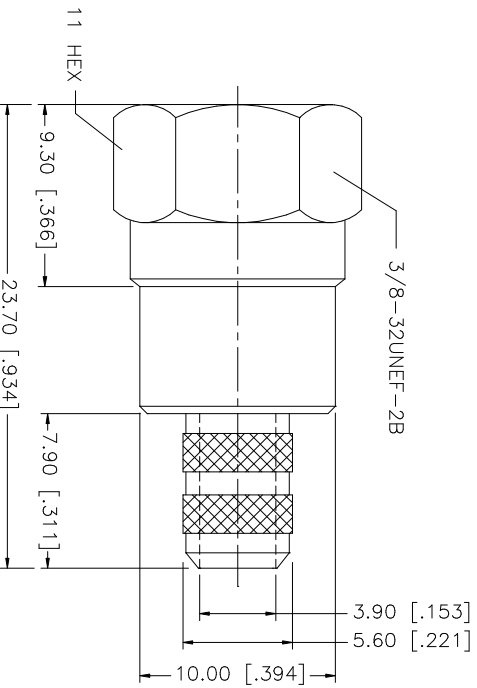
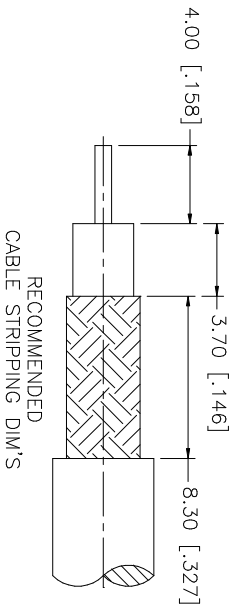


REV.	DATE	DESCRIPTION
A	03/06/03	UPDATE DRAWING FORMAT



- NOTE:
1. CRIMPED FERRULE  
HEX CRIMP SIZE ".255"
  2. CRIMPED CONTACT PIN  
HEX CRIMP SIZE ".068"

NO.	DESCRIPTION	MATERIAL	FINISH	QTY	UNLESS OTHERWISE SPECIFIED DIMENSIONS ARE IN MILLIMETERS. DIMENSIONS IN [ ] ARE IN INCHES AND FOR CUSTOMER REFERENCE ONLY. TOLERANCES FOR MILLIMETERS ARE:	APPROVALS	DATE	PART DESCRIPTION		
8					0.5 - 8mm ± 0.20mm	DRAWN G.R.S.	03/06/03	F CRIMP PLUG (FOR RG-59/U 20AWG - BELDEN 9100)		
7					8 - 30mm ± 0.40mm					
6					30 - 120mm ± 0.50mm	CHECKED				
5	FERRULE	BRASS	NICKEL	1	UNLESS OTHERWISE SPECIFIED DIMENSIONS ARE IN MILLIMETERS. DIMENSIONS IN [ ] ARE IN INCHES AND FOR CUSTOMER REFERENCE ONLY. TOLERANCES FOR MILLIMETERS ARE:	ISSUED				
4	BARREL	BRASS	NICKEL	1	0.20 - .315 = ± 0.007"	SHEET 1 OF 1				
3	CONTACT PIN	BRASS	GOLD	1	.315 - 1.180 = ± 0.015"					
2	INSULATOR	DELRIN	NATURAL	1	1.180 - 4.724 = ± 0.020"					
1	SHELL/BODY	BRASS	NICKEL	1						
	DESCRIPTION	MATERIAL	FINISH	QTY	DO NOT SCALE DRAWING	CAD FILE C:/222/222119.DWG	DWG. NO. 222119.DWG	REV. A	SIZE A	SCALE NA

**Amphenol Connex**