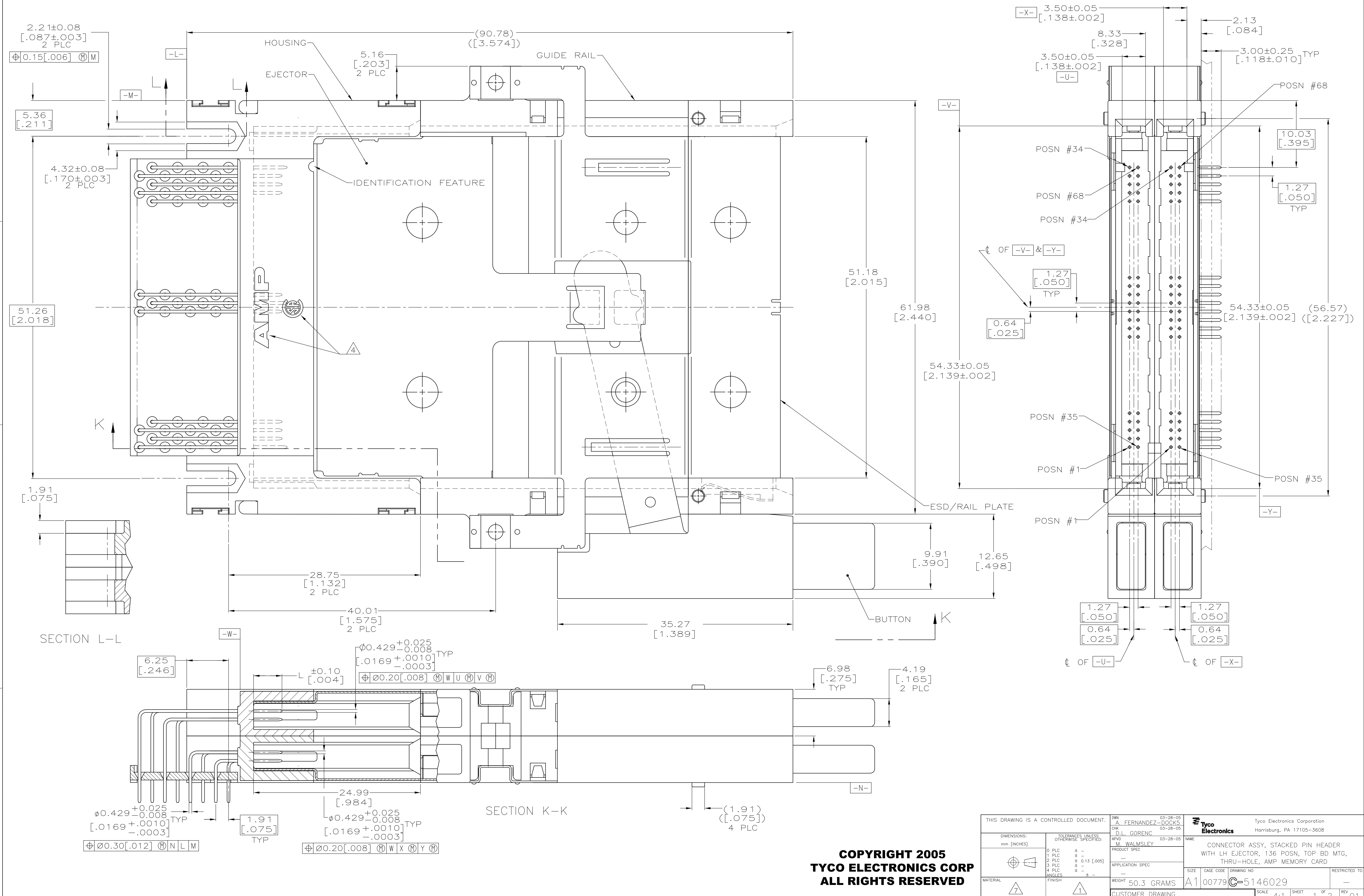
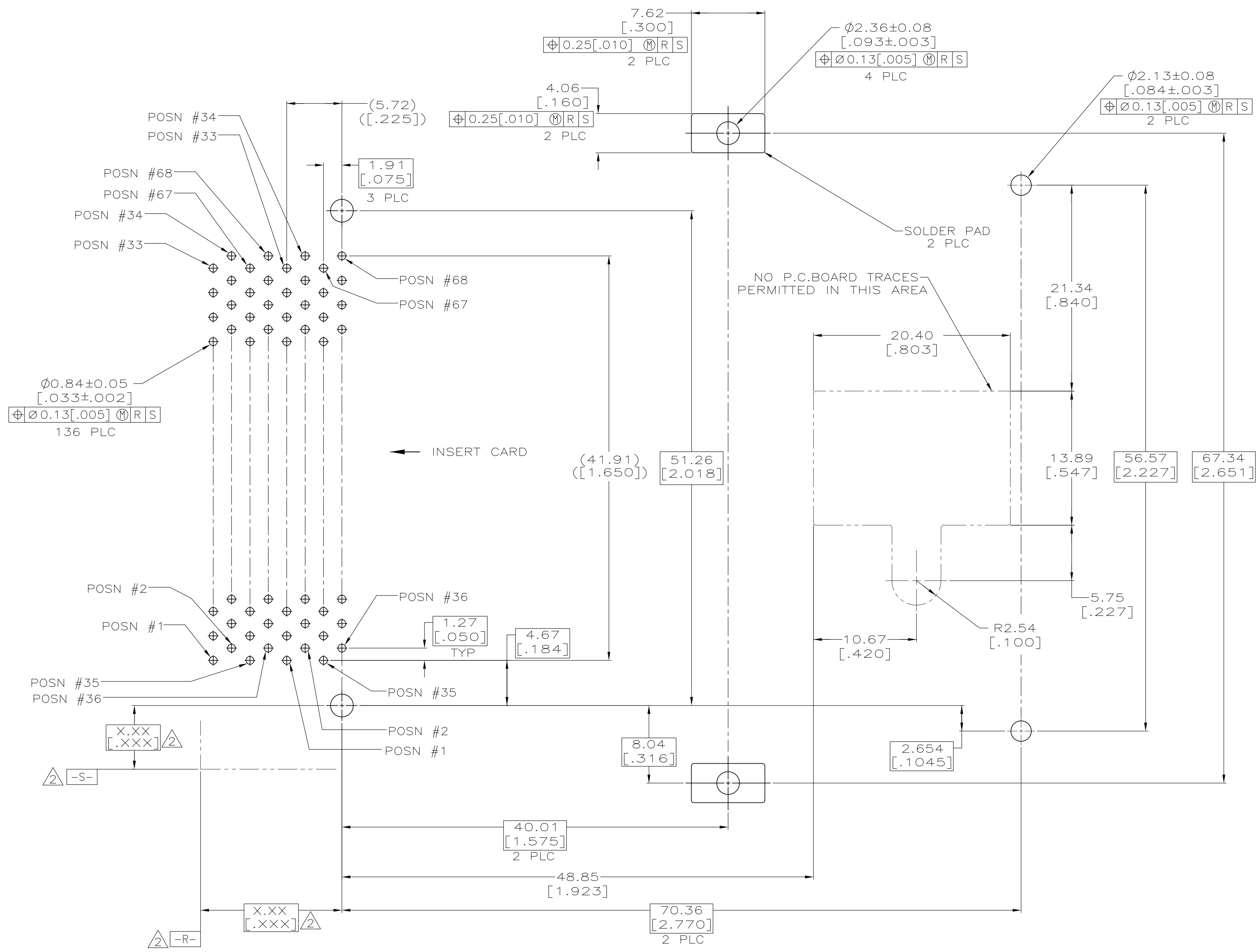


LOC		DIST		REVISIONS			
CP	00	P	LTR	DESCRIPTION	DATE	OWN	APPD
		0		REL PER EC 0513-0031-05	03-28-05	AF	JG
		01		REVISED PER ECO-09-024927	07NOV09	KK	AEG



**COPYRIGHT 2005
 TYCO ELECTRONICS CORP
 ALL RIGHTS RESERVED**

THIS DRAWING IS A CONTROLLED DOCUMENT.		DWN A. FERNANDEZ-DOCK5 03-28-05	03-28-05	Tyco Electronics Corporation Harrisburg, PA 17105-3608
DIMENSIONS: mm [INCHES]		CHK D.L. GORENC 03-28-05	03-28-05	
TOLERANCES UNLESS OTHERWISE SPECIFIED:		APVD M. WALMSLEY 03-28-05		NAME CONNECTOR ASSY, STACKED PIN HEADER WITH LH EJECTOR, 136 POSN, TOP BD MTG, THRU-HOLE, AMP MEMORY CARD
0 PLC ±	1 PLC ±	2 PLC ± 0.13 [005]	3 PLC ±	APPLICATION SPEC
4 PLC ±	ANGLES ±			SIZE CAGE CODE DRAWING NO
MATERIAL	FINISH	WEIGHT	50.3 GRAMS	A1 00779 C=5146029
		CUSTOMER DRAWING		RESTRICTED TO
		SCALE	4:1	SHEET 1 OF 2 REV 01



- △ PIN:
0.00076[.000030] MINIMUM GOLD IN CONTACT AREA,
0.00381[.000150] MIN TIN ON SOLDER TAILS,
ALL OVER 0.00127[.000050] MINIMUM NICKEL
- △ DATUMS AND BASIC DIMENSIONS ESTABLISHED BY CUSTOMER
- 3. CONNECTOR REQUIRES USE OF 4 - SIZE 2M SCREWS FOR FASTENING TO PRINTED CIRCUIT BOARD
- △ RECESSED AMP AND CSA LOGOS LOCATED ON BOTH SIDES OF HOUSINGS.
- △ ASSEMBLY KEYED FOR 5 VOLT CARDS.
- △ ASSEMBLY KEYED FOR LOW VOLT CARDS (3.3V).
- △ MATERIAL:
HOUSING, GUIDES, SHROUD, BUTTON & ORGANIZER: LCP,
COLOR; BLACK
PINS: PHOSPHOR BRONZE & BRASS
EJECTOR, RAIL PLATE & LEVER: STAINLESS STEEL
- △ OBSOLETE PARTS: OBSOLETE CIS STREAMLINING PER D.RENAUD/D.SINISI

RECOMMENDED BOARD LAYOUT

8	OBSOLETE	△6	1,17,34 35,51,68	ALL OTHER PINS	36,67	-5146029-2-
		△5	1,17,34 35,51,68	ALL OTHER PINS	36,67	5146029-1
VOLTAGE KEYING			5.0 [.197]	4.25 [.167]	3.5 [.138]	PART NUMBER
"L" (PIN LENGTH) AND LOCATION						

THIS DRAWING IS A CONTROLLED DOCUMENT.		OWN A. FERNANDEZ-DOCK5 03-28-05	CHK D.L. GORENC 03-28-05	APVD M. WALMSLEY 03-28-05	NAME	Tyco Electronics Corporation Harrisburg, PA 17105-3608	
DIMENSIONS: mm [INCHES]		TOLERANCES UNLESS OTHERWISE SPECIFIED:		PRODUCT SPEC		CONNECTOR ASSY, STACKED PIN HEADER WITH LH EJECTOR, 136 POSN, TOP BD MTG, THRU-HOLE, AMP MEMORY CARD	
MATERIAL		FINISH		APPLICATION SPEC		RESTRICTED TO	
CUSTOMER DRAWING		SCALE 4:1		SHEET 2 OF 2		REV 01	

**COPYRIGHT 2005
 TYCO ELECTRONICS CORP
 ALL RIGHTS RESERVED**