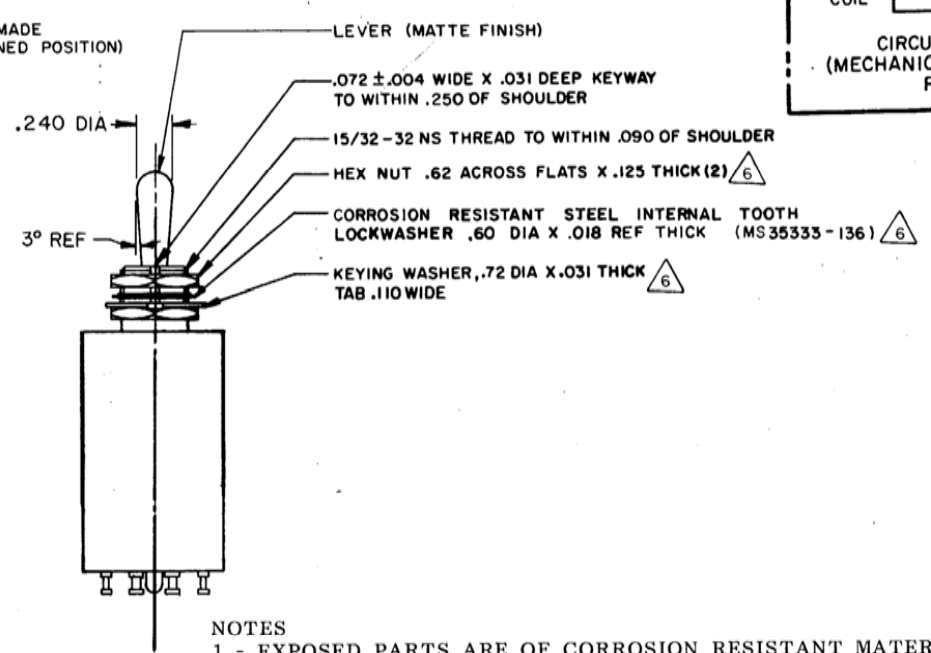
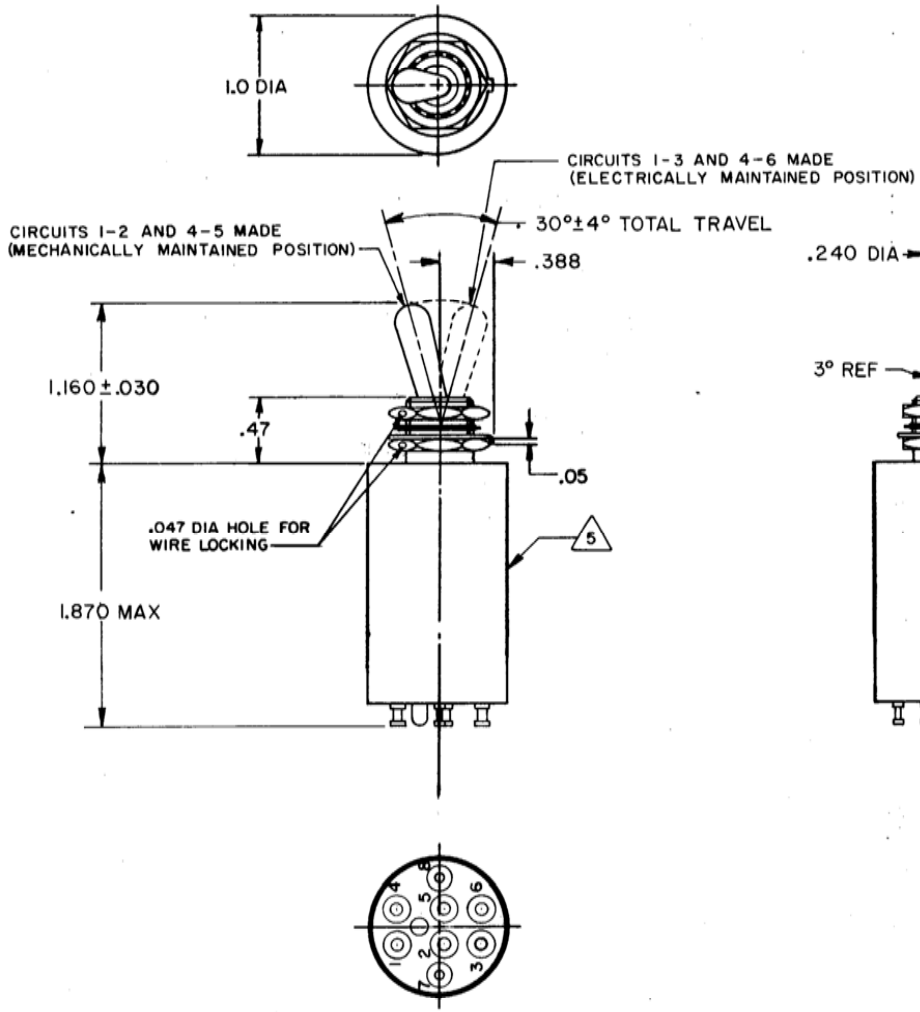
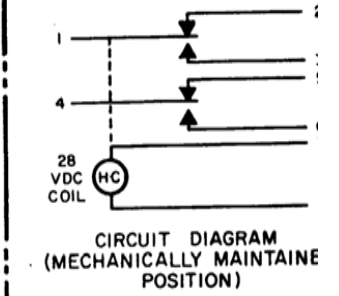


MICRO SWITCH
 DEPT. ILLINOIS U.S.A.
 DIVISION OF HONEYWELL
 MFG. CODE 91929

**SWITCH - TOGGLE
 (MAGNETIC HOLD-IN)**

CATALOG LISTING
26ET61-T
 MILITARY STDS. PART NO.
 M5594/2-1



- NOTES
- 1 - EXPOSED PARTS ARE OF CORROSION RESISTANT MATERIAL OR ARE SUITABLY PROTECTED TO PREVENT CORROSION. ENCLOSURE FINISHED WITH BLUE EPOXY BASED ENAMEL COLOR NO. 25184 PER FEDERAL STANDARD 595
 - 2 - SWITCH SEALED PER MIL-S-5594
 - 3 - HOLD IN VOLTAGE: THE MINIMUM SPECIFIED VOLTAGE AT WHICH THE LEVER WILL REMAIN ACTUATED. HOLD IN MAY OCCUR AT A LOWER VALUE.
 DROP OUT VOLTAGE: THE VOLTAGE RANGE IN WHICH THE LEVER WILL BE RELEASED
 - 4 - CIRCUITS CAN BE TRANSFERRED MANUALLY. ENERGIZING THE COIL WILL NOT CAUSE TRANSFER OF CIRCUITS
 - 5 - CIRCUIT IDENTIFICATION AND CATALOG LISTING IS SHOWN ON SWITCH
 - 6 - HARDWARE MAY BE FURNISHED UNASSEMBLED PER MIL-S-5594
 - 7 - FORCE TO BE APPLIED AT THIS POINT IN A DIRECTION PERPENDICULAR TO THE LEVER LONGITUDINAL AXIS
 - 8 - SWITCHES DO NOT NECESSARILY OPERATE SIMULTANEOUSLY

THIS DRAWING COVERS A PROPRIETARY ITEM AND IS THE PROPERTY OF MICRO SWITCH, A DIVISION OF HONEYWELL. THIS DRAWING IS NOT TO BE COPIED OR USED WITHOUT THE APPROVAL OF MICRO SWITCH.

CHARACTERISTICS	ELECTRICAL DATA	SCALE FULL
SOLENOID RATING AT 20°C	CONTACT ARRANGEMENT SPDT (2)	DO NOT SCALE PRINT
STATE LIMITS ----- 20-29 VDC	28 VDC	UNLESS OTHERWISE NOTED
----- 15 VDC	Sea Level 65,000 feet	DIMENSIONS ARE IN INCHES
----- 0-15 VDC	Resistive 4 4	TOLERANCES ARE:
DE FORCE AT 29 VDC --- 10 LB MAX	Inductive 2.5 2	ONE PLACE (.01) ±.030
ING FORCE ----- 7 LB MAX	Motor 4 4	TWO PLACE (.001) ±.018
RESISTANCE ----- 220 OHM MIN		THREE PLACE (.0001) ±.008
		ANGLES ±
		WEIGHT 4.0 OZ MAX