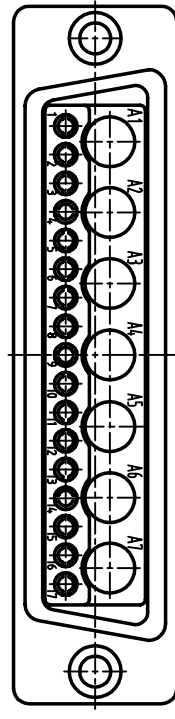
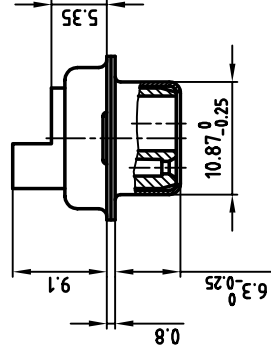
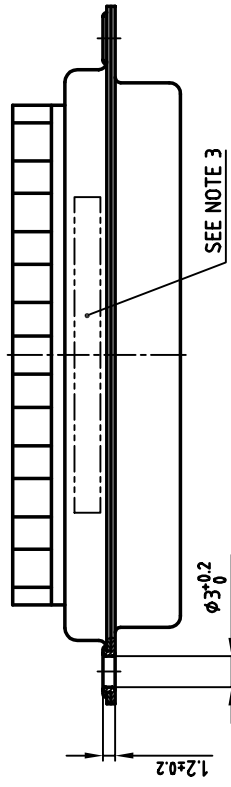
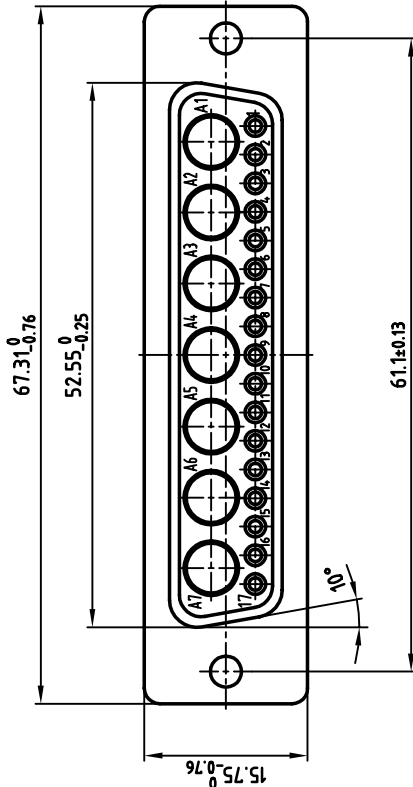


used for: D-SUB COMBINATION CRIMP



Directive 2002/95/EC
"RoHS"
Compliant

- NOTES:**
- METALSHELLS: STEEL: TIN PLATED
 - INSULATORS: PBTP GF UL 94 V-0; BLACK
 - PRODUCT MARKING: PART-NO. / YEAR / DATE

CARLBERG & SON		tolerance		scale: 2:1	
DO NOT ALTER CAD DRAWING BY HAND		material: SEE NOTES		title: D-SUB COMBINATION FEMALE	
OWNERSHIP AND COPYRIGHT OF CONEC GMBH		1998		CRIMP STYLE 24-W7S	
WRITTEN PERMISSION		drawn 02.07. Barcinski		dwg no: 13K11H8A	
BE PASSED ON TO A THIRD PARTY WITHOUT		appd. 02.07. Mickenbecker		[CAD/ REL.13] DIN-A	
REPRODUCED IN ANY WAY, AND MAY NOT		norm DIN 41652		sh: 1/1	
THIS DRAWING MAY NOT BE COPIED OR		6-old		product no: 3024W7SXX99A10X	
rev.	description	date	name		



F 1 2 3 4 5 6 7 8

E

D

C

B

A