

DUAL-IN-LINE SOCKETS

SERIES 296, 299, 594 • DISPLAY SOCKETS

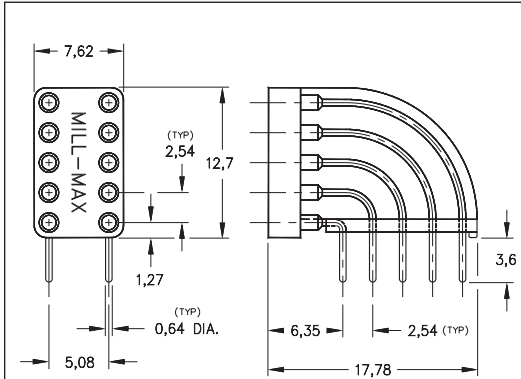
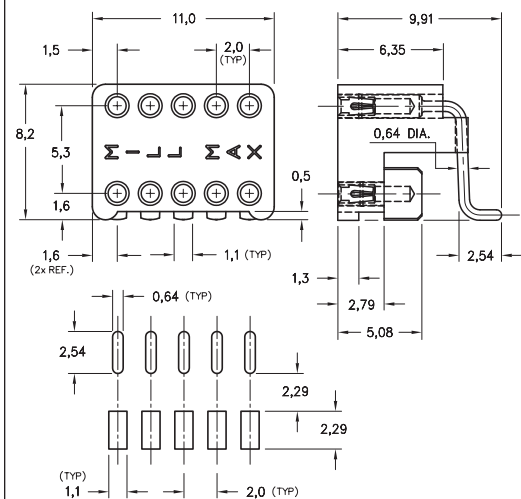


FIG. 1



FOOTPRINT

FIG. 2

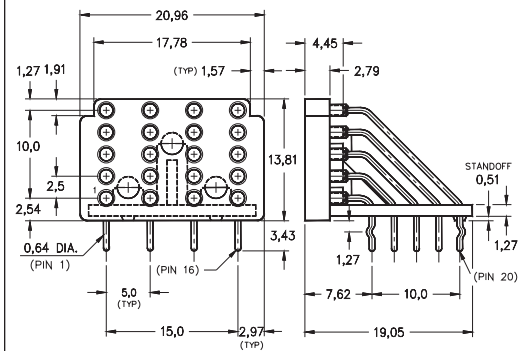
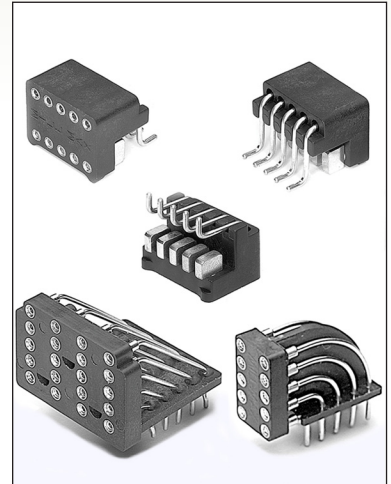


FIG. 3

- Series 296, 299 and 594 display sockets are used to mount dot matrix and 7-segment LED displays at the edge of and perpendicular to a printed circuit board. This positions the display directly behind the translucent front panel of the equipment
- Series 299 & 594 are through-hole mount and can be wave or intrusive reflow soldered
- Series 296 is surface mount and can be supplied on carrier tape for automated "pick 'n place" assembly
- Hi-Rel, 4-finger BeCu #30 contact is rated at 3 amps. See page 253 for details
- See also page 129 for Right Angle DIP Sockets
- Insulators are high temp. Nylon 46, suitable for all soldering processes including "lead-free"
- For Electrical, Mechanical and Environmental Data, see page 264 for details



ORDERING INFORMATION

FIG. 1	Series 299...001	10 Pin Vertical Display Socket
	Discrete Sockets	
	299-99-210-12-001800	Plating Code
FIG. 2	Series 296...691	10 Pin Horizontal Display Socket
	Discrete Sockets	
	296-XX-010-30-691800	Plating Code
FIG. 3	Series 296...692	10 Pin Horizontal Display Socket
	Supplied on 24mm wide carrier tape per EIA-481: 450 per 330mm reel	
	296-XX-010-30-692800	Plating Code
FIG. 3	Series 594...007	20 Pin Vertical Display Socket
	Discrete Sockets	
	594-XX-020-01-007032	Plating Code



XX=Plating Code
See Below

SPECIFY PLATING CODE XX=			99		44
Sleeve (Pin)			5,08µm Sn/Pb		5,08µm Sn
Contact (Clip)			5,08µm Sn/Pb		5,08µm Sn

