

ATLANTIC VERSION TERMINATOR INTERFACE ADAPTER. PART NUMBER, REVISION, DESCRIPTION, FEED TYPE, CONVERT TO, PART NUMBERS REQUIRED. Includes a technical drawing of the terminator interface adapter.

APPLICATOR DATA. CRIMP SIZE, WIRE SIZE, INSUL. SIZE, WIRE TYPE. APPLICATOR INSTRUCTIONS 408-10389.

TERMINAL DATA: LEAR TERMINAL LEAR CRIMP SPECIFICATION. WIRE STRIP LENGTH, INSULATION DIAMETER RANGE. TERMINALS APPLIED table with TE terminal and LEAR terminal columns.

WIRE SIZE, CRIMP HEIGHT mm [INCH], CRIMP HEIGHT REFERENCE SETTING. Table with 4 columns: Wire Size, Crimp Height (mm), Crimp Height (inch), Reference Setting.

- RECOMMENDED SPARE PARTS. GREASE BEARING SURFACES LIGHTLY. LUBRICATE DAILY PER THE APPLICATOR INSTRUCTION SHEET SUPPLIED WITH THE APPLICATOR. APPLICATOR SPECIFIC DATA TO BE ENTERED INTO BLANK MEMORY CHIP AT ASSEMBLY. ADJUSTMENT OF THE STRIPPER MAY BE REQUIRED WHEN MOVING THE APPLICATOR BETWEEN BENCH AND LEADMAKER APPLICATIONS. APPLY PART NUMBER 1-23419-5 LOCTITE TO THREADS OF ITEMS 62, 180 & 242. GREASE THREADS, GROOVE AND O-RING ON ITEMS 35 & 252. MAGNET, ITEM 166 MUST BE ORIENTED CORRECTLY IN ORDER TO PROPERLY ACTUATE THE COUNTER. CRIMP HEIGHT REFERENCE SETTING WAS THE SETTING USED WHEN THE APPLICATOR WAS QUALIFIED AT THE FACTORY. SPARE FEED CAM STORAGE LOCATION REFER TO INSTRUCTION SHEET FOR ADDITIONAL INFORMATION. TO CONVERT THE APPLICATOR TO A NON-CARRIER CUTTING STYLE, REMOVE ITEM 13 AND ATTACH TO THE LOCATION ON THE BACK SIDE OF THE HOUSING. WHEN ASSEMBLING A NON CRIMP HEIGHT ADJUST APPLICATOR (-6) USE SHIMS FROM ITEM 260 TO ACHIEVE A NOMINAL SHIM HEIGHT OF 3.95.

*WARNING ON INSTALLATION, SET WIRE DISC, ITEM 40 TO LARGEST WIRE SIZE SETTING. USE OF SETTINGS BELOW MINIMUM REQUIRED CRIMP HEIGHT SETTING WILL CAUSE DAMAGE TO CRIMP TOOLING.

Table with 7 columns: Part No, Description, Item No. Lists various components like APPLICATOR SHIM PACK, O-RING, PUSH ROD, BUSHING, FEED CAM, DETENT PIN, SPRING, RAM, CAM, WASHER.

ATLANTIC VERSION Shown on sheets 1 of 4 & 2 of 4 (Pacific version shown on sheets 3 of 4 & 4 of 4)

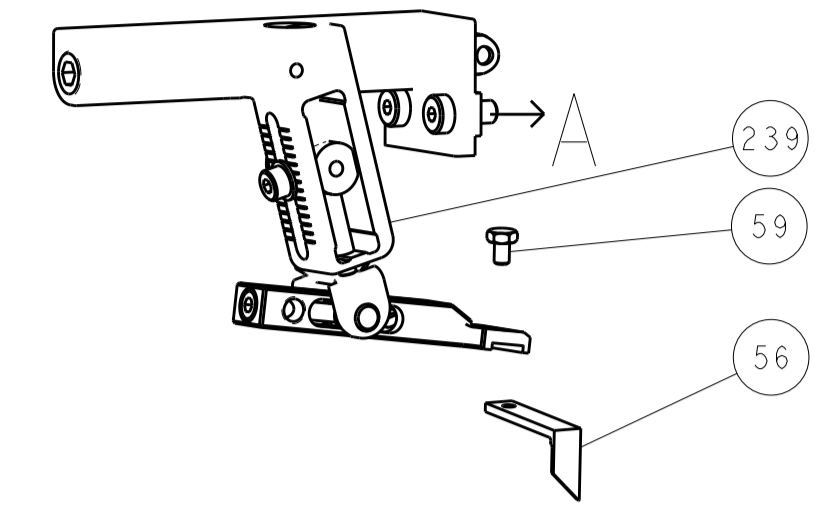
SET UP GAUGE 2119599-1. LOC A, DIST 66. REVISIONS table with columns for Part, LTR, Description, Date, Dwn, App'd.

Large assembly table with columns: Part No, Description, Item No. Lists hundreds of components such as RETAINER, SHCS, MECHANICAL FEED ASSEMBLY, AIR FEED MODULE, TAG IDENTIFICATION, SPACER, STANDOFF, SPRING, GUIDE PIN, RING, MAGNET, COUNTER, SPRING, FEED FINGER, PIN, RETAIN, GRVD, HOLDER, MEMORY CHIP, SERVO FEED LATCH ASM, WASHER, FEED FINGER ASSEMBLY, SPRINGER, SPRINGER, DOCUMENTATION PACKAGE, DEPRESSOR, WASHER, TAG, SCREW, LIMITER, SCR, SET, SCR, BHSC, SCR, HEX HD CAP, PIN, SLOTTED SPRING, FEED PAWL, SHCS, NUT, HOLDDOWN, SCR, FEED CAM, FEED CAM, APPLICATOR BASIC ASSEMBLY, RAM, SCR, DISC, APPLICATOR SHIM PACK, RAM WASHER, FA HEAD, BOLT, SUPPORT, SCR, HEX HEAD, SPACER, STRIP GUIDE, ASSEMBLY, STRIP GUIDE, SPACER, CRIMPER, STRIP GUIDE, SCR, SKT HD CAP, WASHER, STRIPPER, INSERT, SPRING, STOP, SHEAR, SHEAR HOLDER, FLOATING SHEAR, ANVIL, DEPRESSOR, BLOCK, CRIMPER SPACER, CRIMPER, SPACER, CRIMPER, CRIMPER, WIRE PREMIUM.

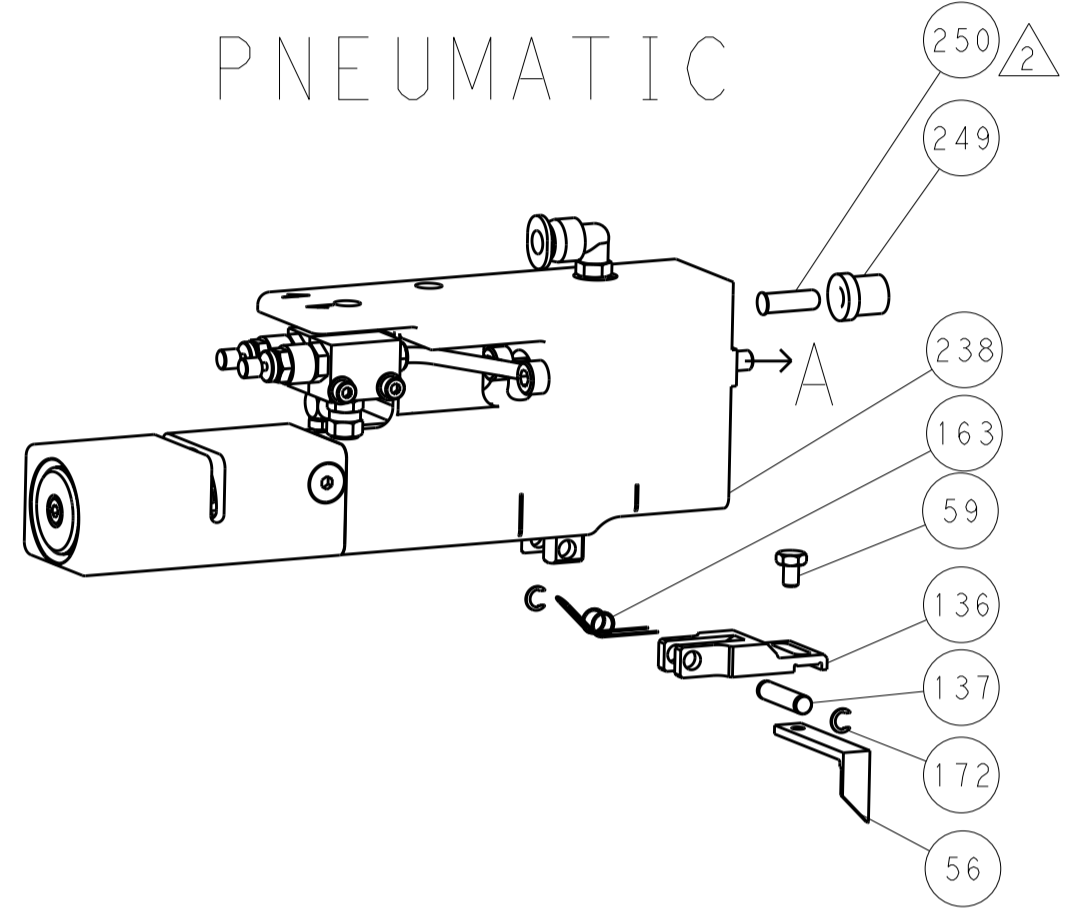
Company information for STC TE Connectivity, including dimensions, tolerances, materials, and drawing details like DIMENSIONS, TOLERANCES UNLESS OTHERWISE SPECIFIED, MATERIAL, FINISH, WEIGHT, SCALE 1:2, SHEET 1 OF 4.

LOC		DIST		REVISIONS			
A	66	P	LTM	DESCRIPTION	DATE	DWN	APVD
		-	-	SEE SHEET 1	-	-	-

FEED TYPE MECHANICAL



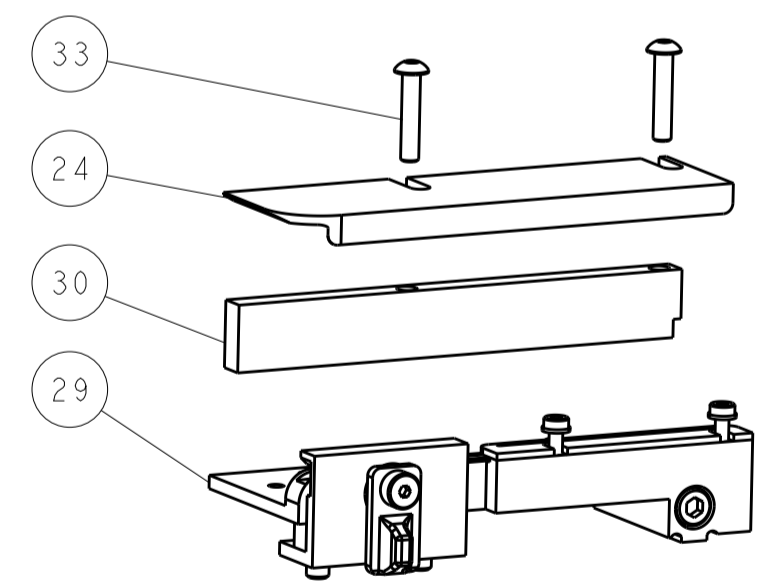
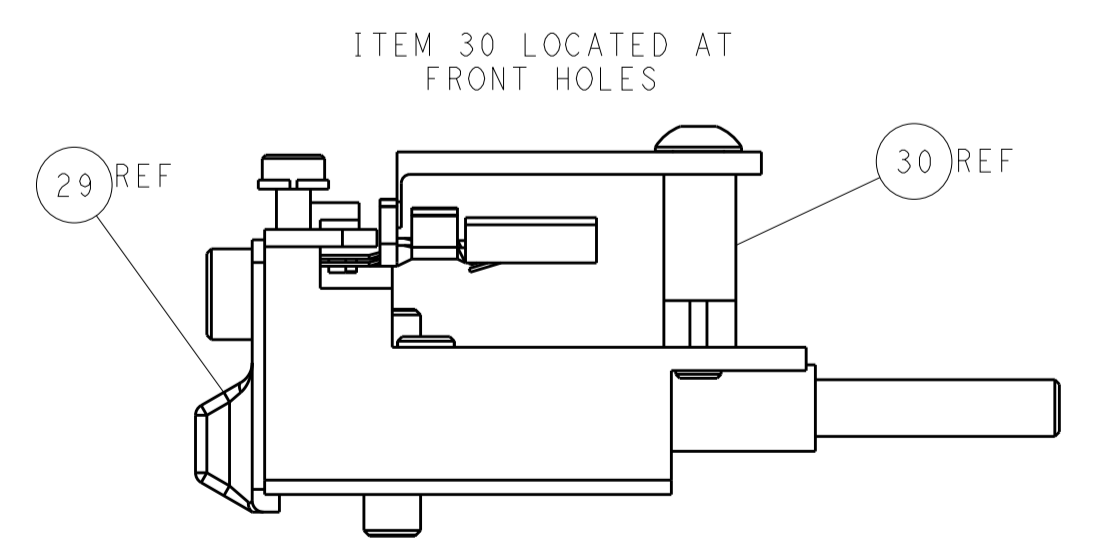
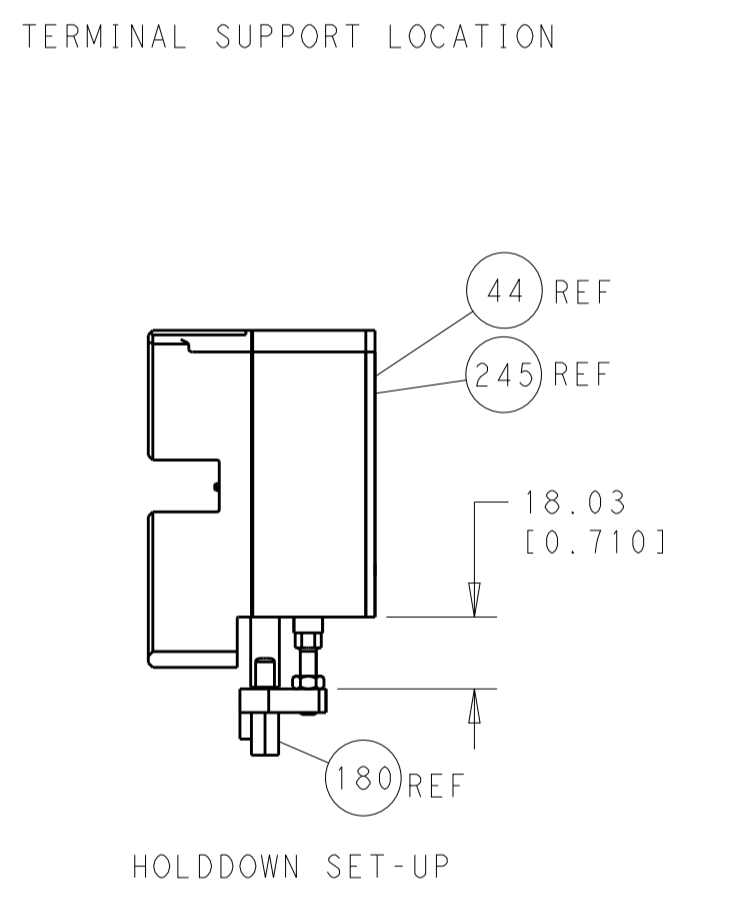
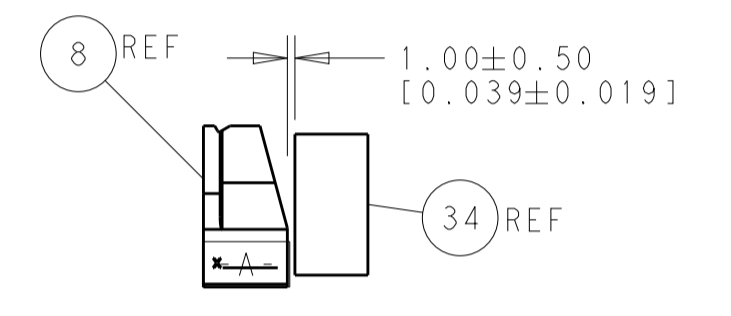
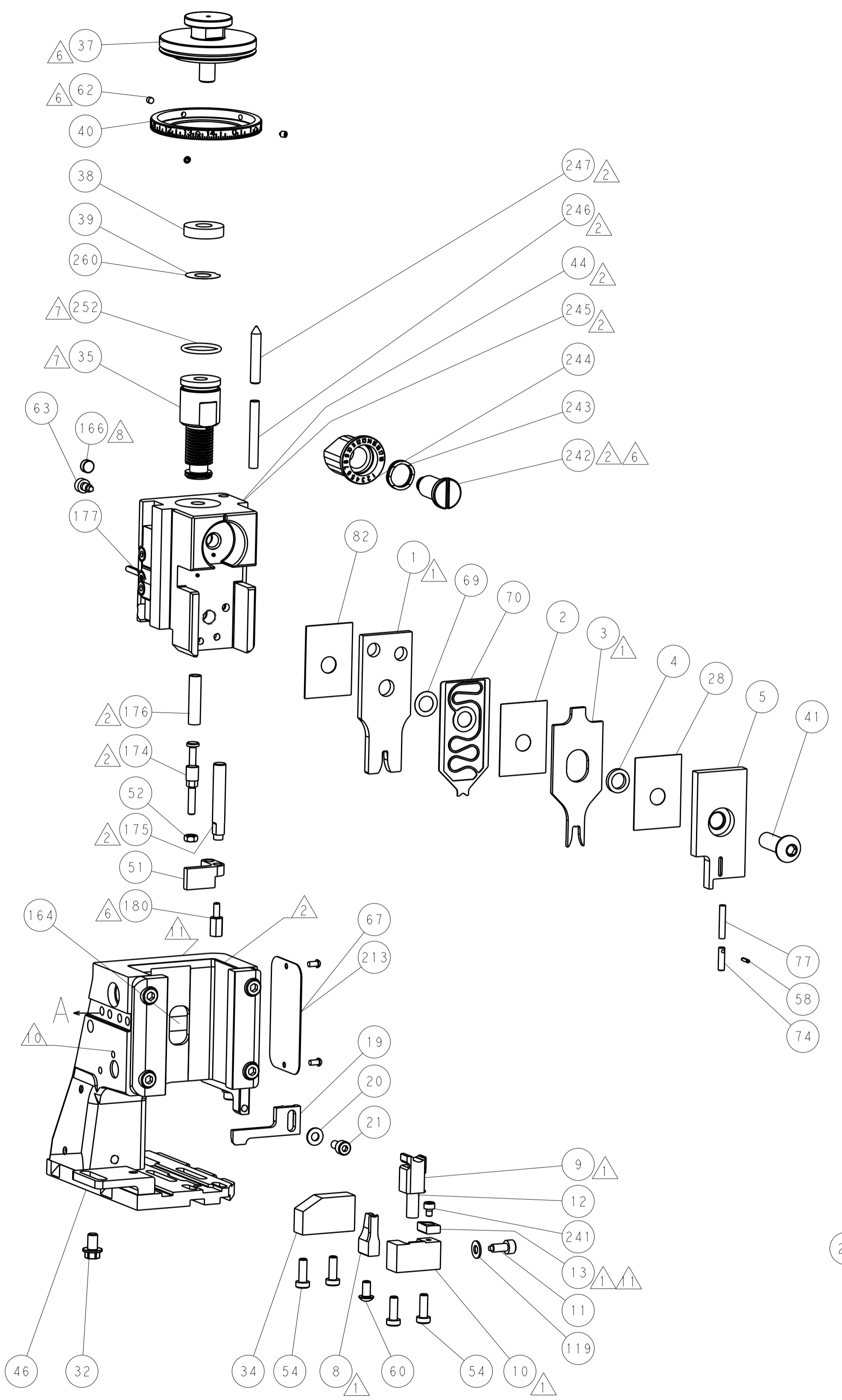
PNEUMATIC



SERVO LATCH PLATE



CAM POSITIONS

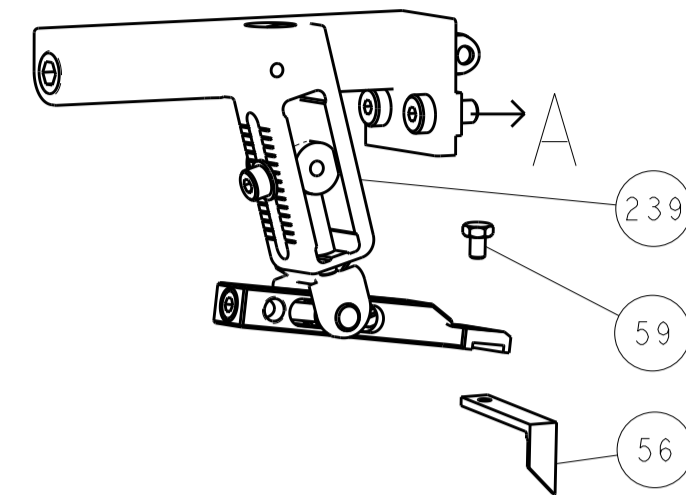


ATLANTIC VERSION
 Shown on sheets 1 of 4 & 2 of 4
 (Pacific version shown on sheets 3 of 4 & 4 of 4)

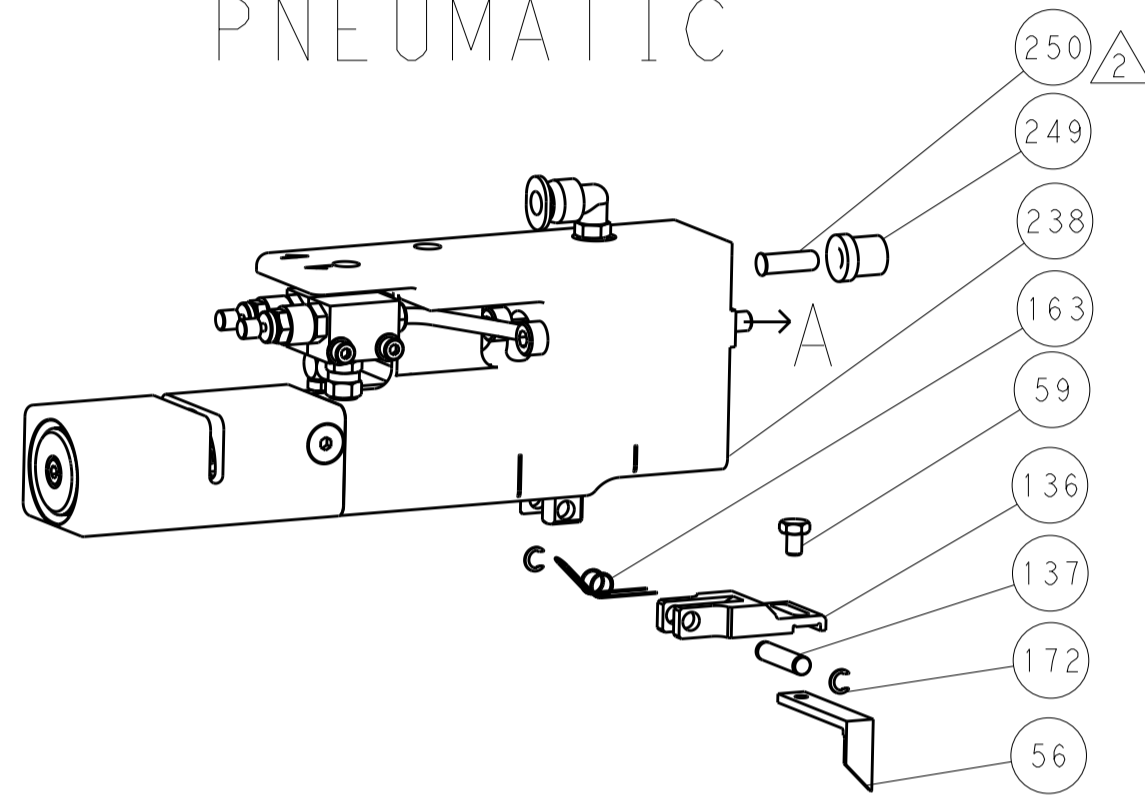
DIMENSIONS:		TOLERANCES UNLESS OTHERWISE SPECIFIED:		DWN X ZHAO 16OCT2013		TE Connectivity	
mm	0 PLC ±0.5	1 PLC ±0.5	2 PLC ±0.13	3 PLC ±0.013	4 PLC ±0.001	APVD T. ELBIN 16OCT2013	Harrisburg, PA 17105-3608
MATERIAL:		FINISH:		NAME		Ocean Side Feed Applicator	
Customer Accessible Production Drawing		SCALE 1:2		SHEET 2 of 4		REV A	

LOC		DIST		REVISIONS			
A	66	P	LTM	DESCRIPTION	DATE	DMN	APVD
		-		SEE SHEET 1			

FEED TYPE MECHANICAL



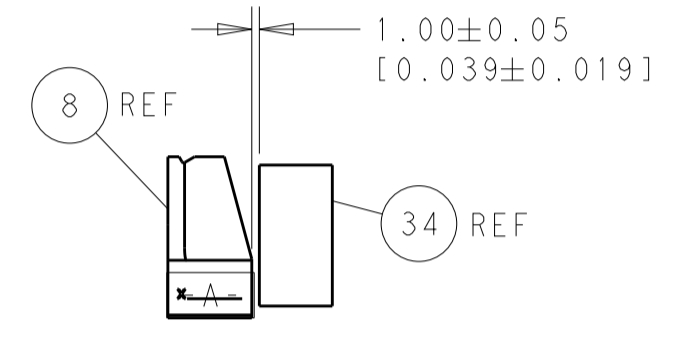
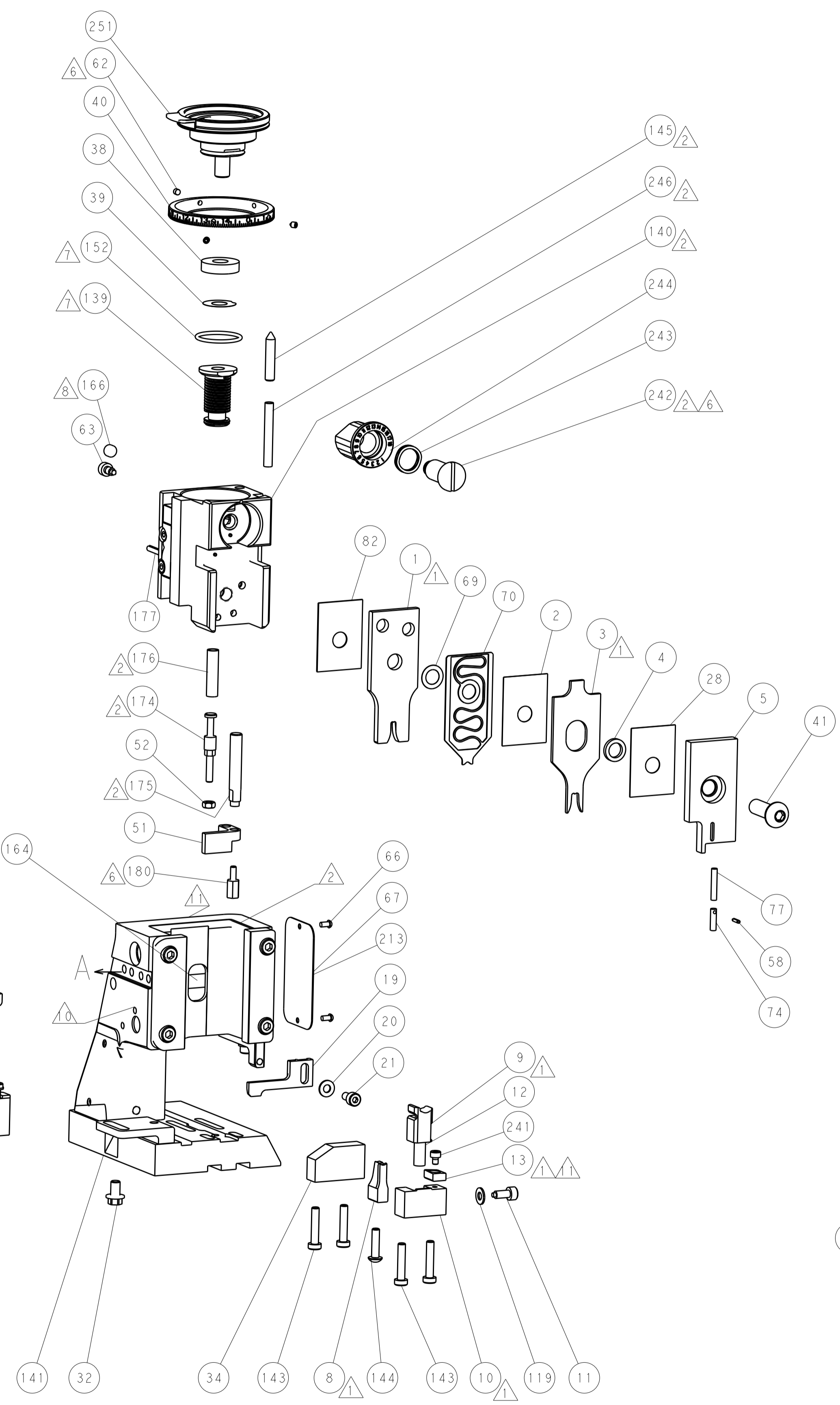
PNEUMATIC



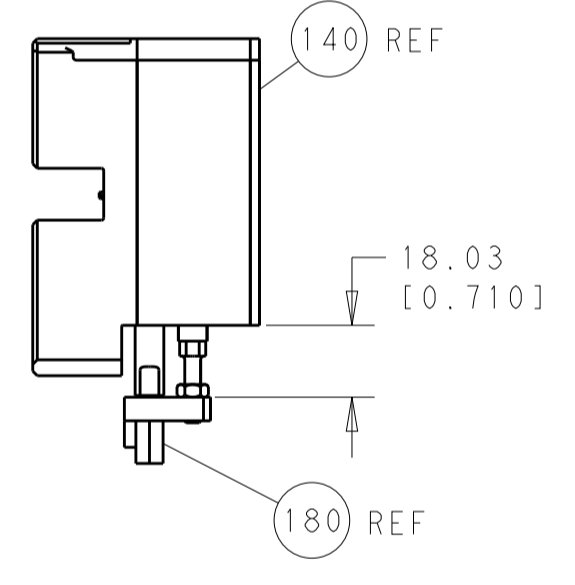
SERVO LATCH PLATE



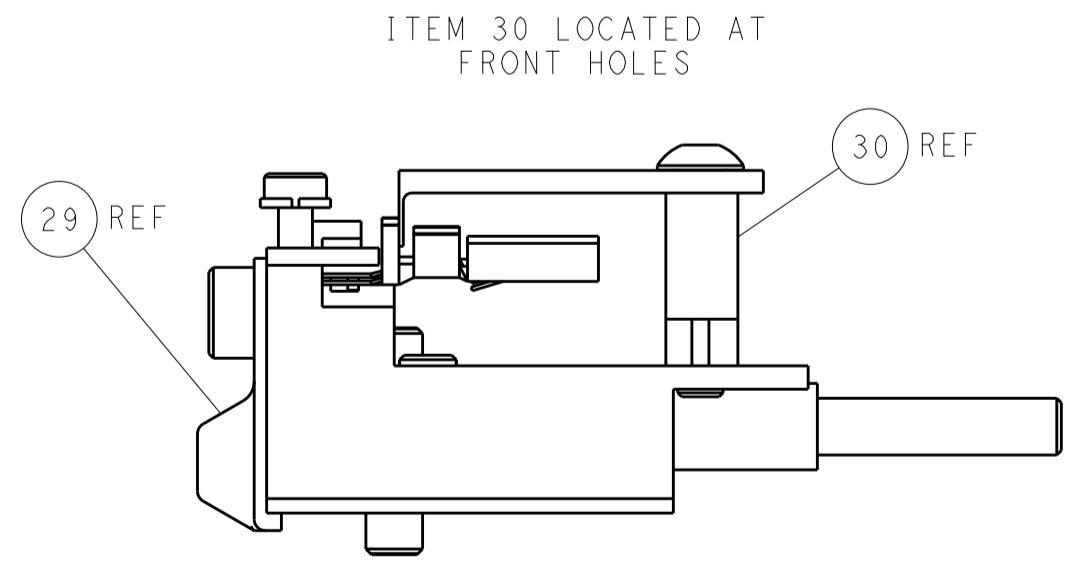
CAM POSITIONS



TERMINAL SUPPORT LOCATION



HOLDDOWN SET-UP



FEED TRACK POSITION GUIDE BY INSULATION BARREL

PACIFIC VERSION
 Shown on sheets 3 of 4 & 4 of 4
 (Atlantic version shown on sheets 1 of 4 & 2 of 4)

DIMENSIONS:		TOLERANCES UNLESS OTHERWISE SPECIFIED:		DWG: X_ZHAO 16OCT2013		REV: T_ELBIN 16OCT2013		NAME: Ocean Side Feed Applicator	
mm	0 PLC ±0.5	1 PLC ±0.13	2 PLC ±0.013	3 PLC ±0.001	4 PLC ±0.001	APVD: L_ZHANG 16OCT2013	PRODUCT SPEC:	APPLICATION SPEC:	RESTRICTED TO:
MATERIAL:	FINISH:	WEIGHT:	SCALE: 1:2	SHEET: 4	OF: 4	REV: A	Customer Accessible Production Drawing		