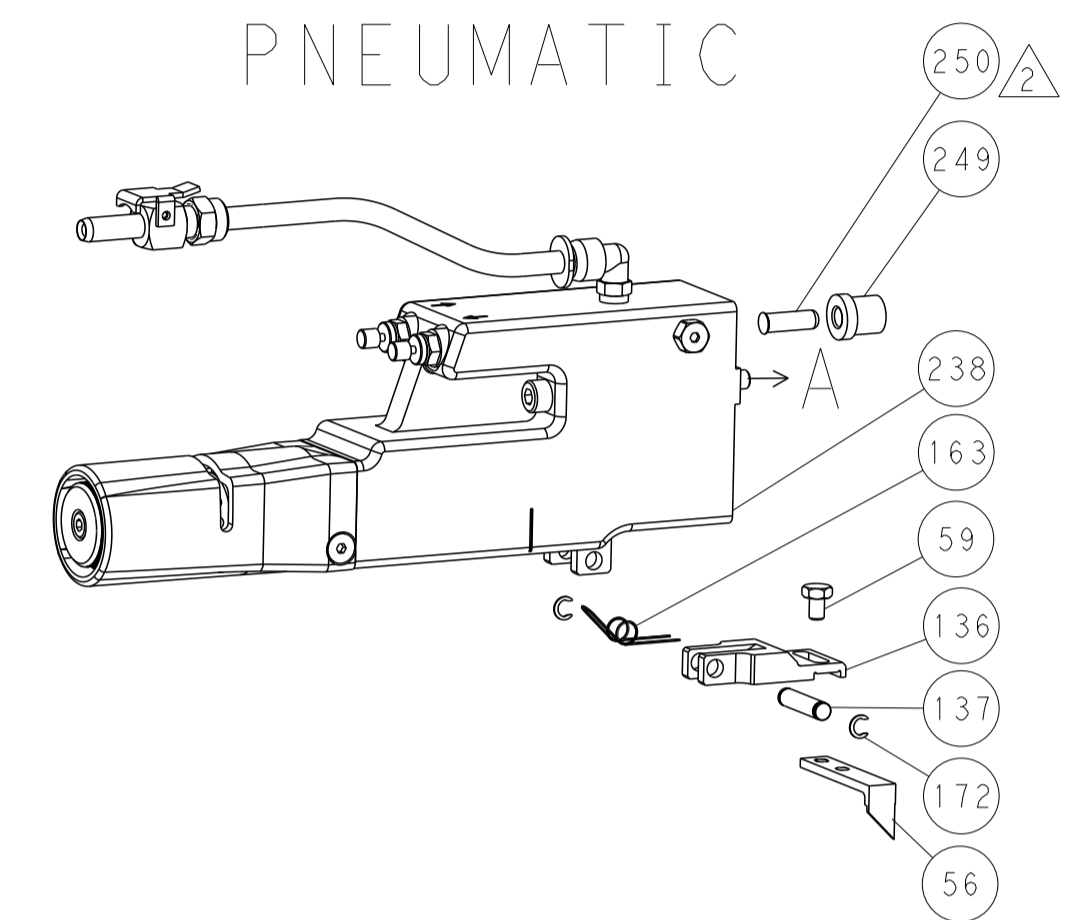


| LOC | DIST | REV | DATE | BY | APPD |
|-----|------|-----|------|----|------|
| A | 66 | | | | |

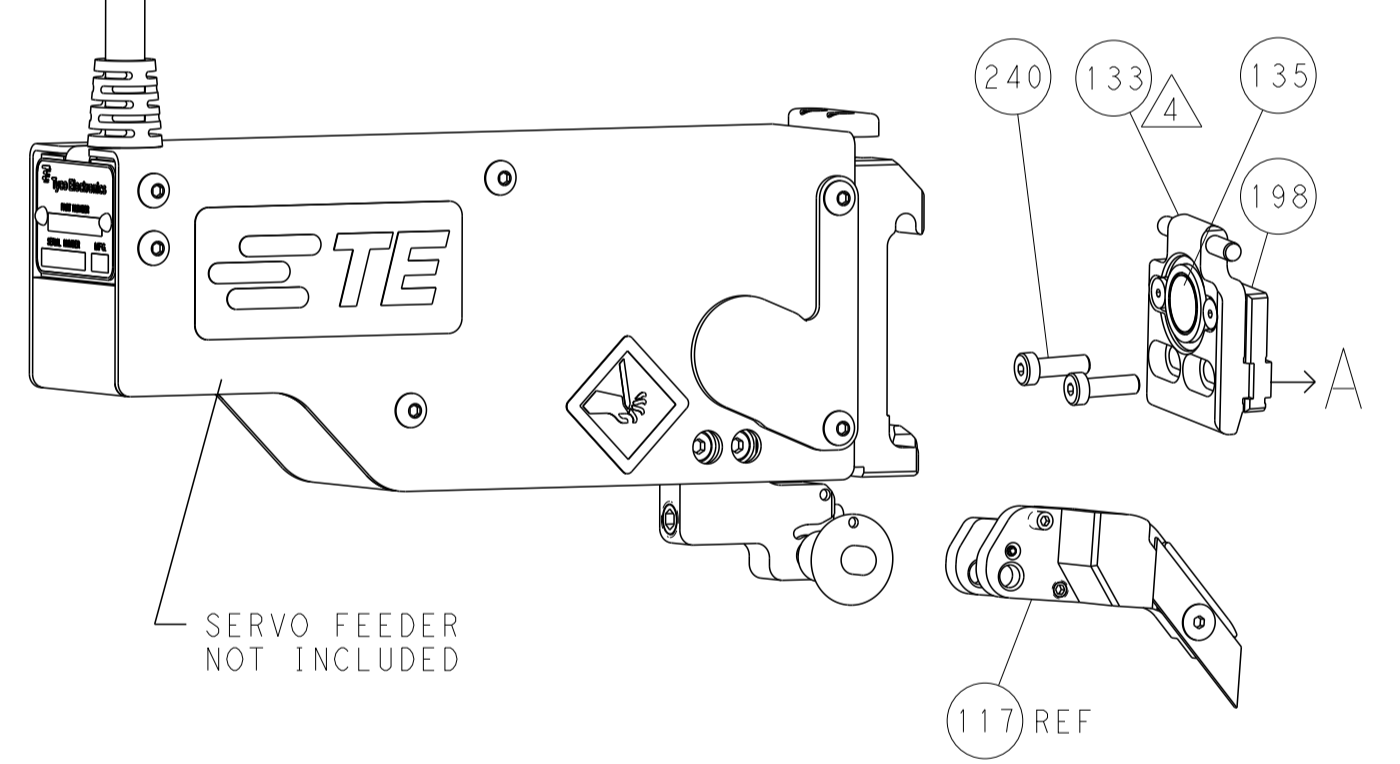
| REVISIONS | | | |
|-----------|-------------|----|------|
| REV | DATE | BY | APPD |
| - | SEE SHEET 1 | - | - |

FEED TYPE

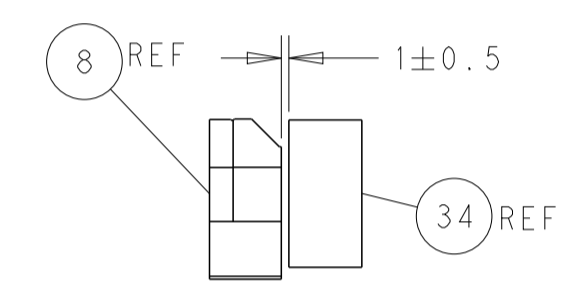
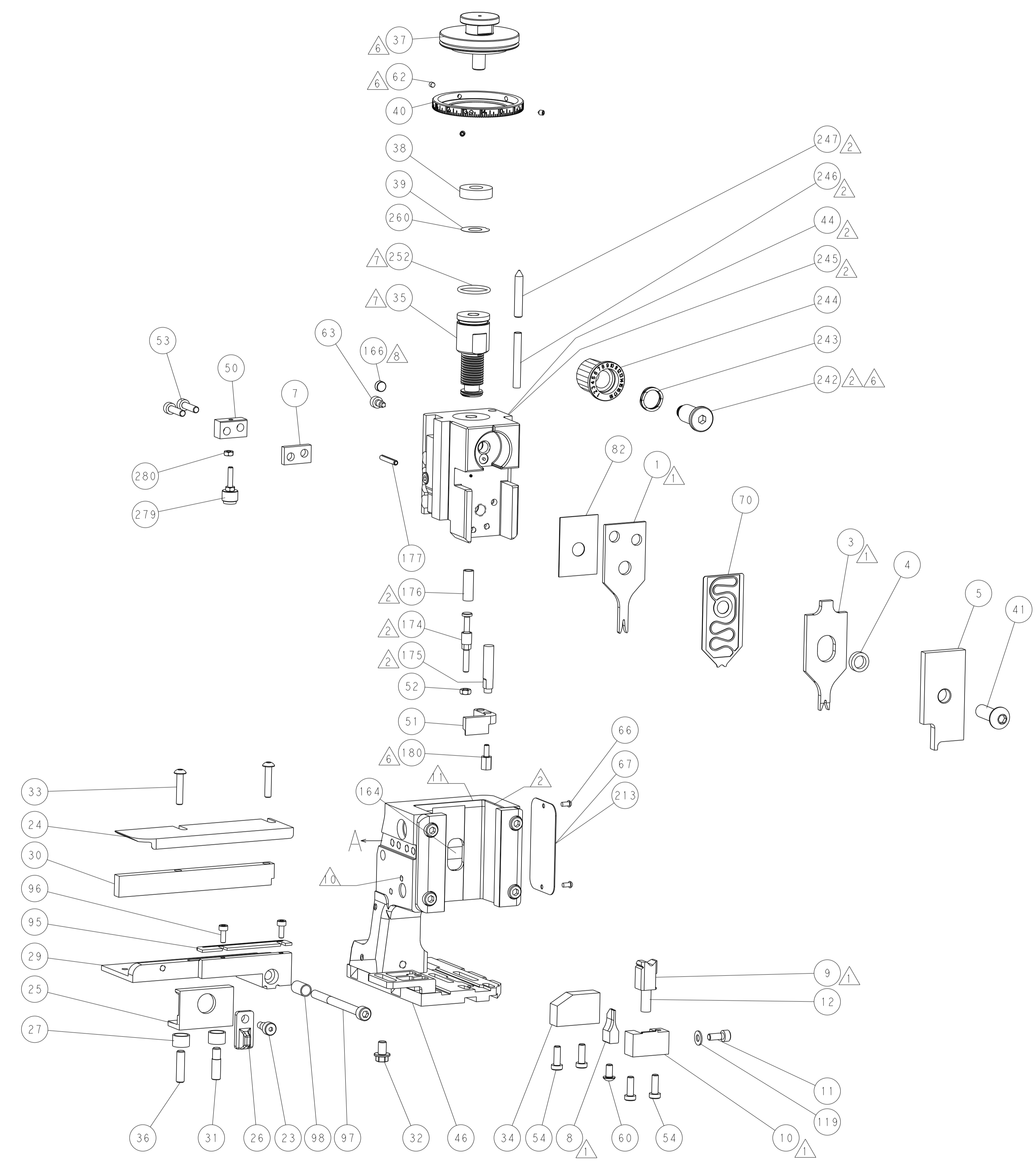
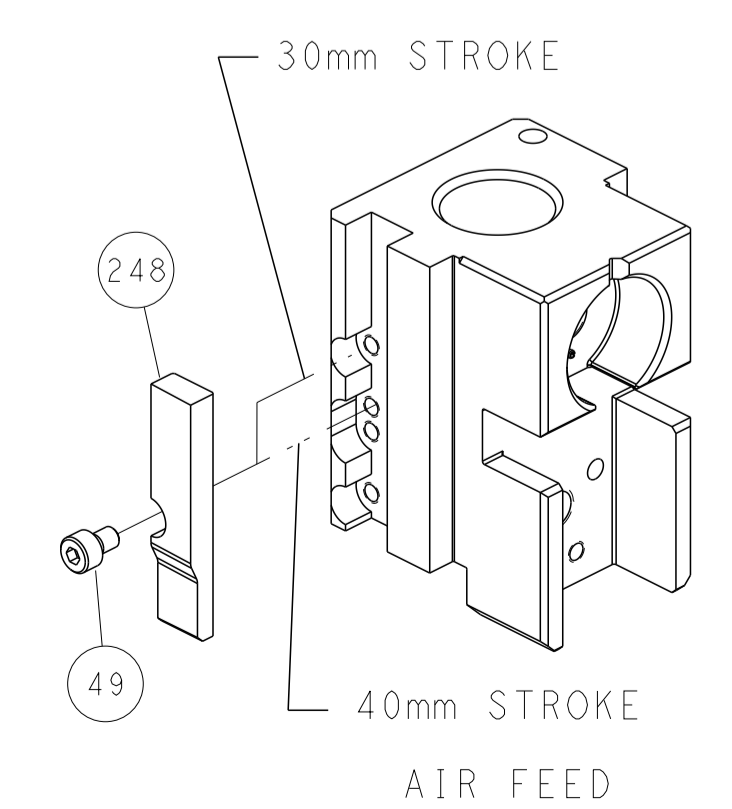
PNEUMATIC



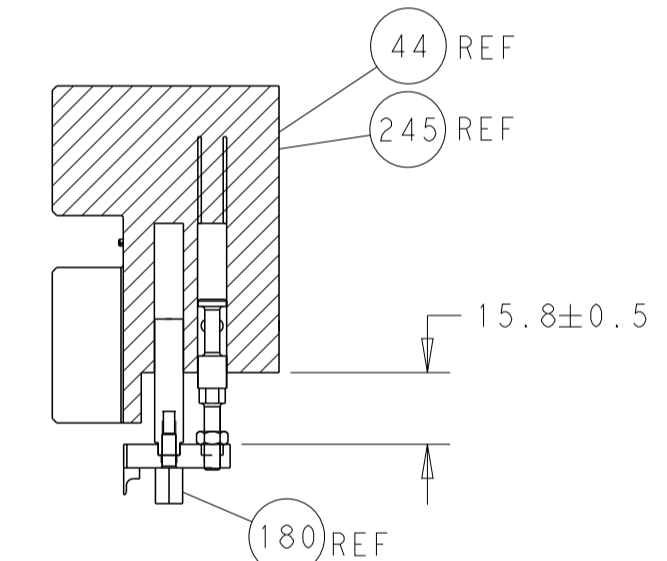
SERVO LATCH PLATE



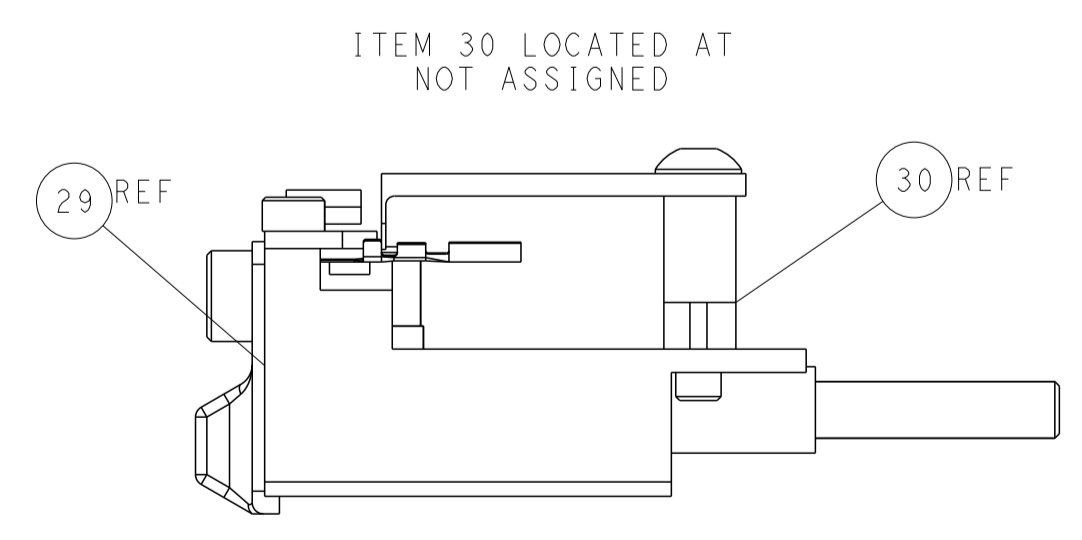
CAM POSITION



TERMINAL SUPPORT LOCATION



HOLDDOWN SET-UP



FEED TRACK POSITION GUIDE BY GUIDE_BY_STR

ATLANTIC VERSION
 Shown on sheets 1 of 4 & 2 of 4
 (Pacific version shown on sheets 3 of 4 & 4 of 4)

| | | | | | | | |
|--|---------|--|---------|-----------------------|------------|-----------------|---|
| DIMENSIONS: | | TOLERANCES UNLESS OTHERWISE SPECIFIED: | | DWG: Y. YIN 24APR2014 | | TE Connectivity | |
| mm | 0 PLC ± | 1 PLC ± | 2 PLC ± | 3 PLC ± | 4 PLC ± | ANGLES ± | TE Connectivity Harrisburg, PA 17105-3608 |
| MATERIAL: | FINISH: | WEIGHT: | SCALE: | SIZE: | CAGE CODE: | DRAWING NO: | RESTRICTED TO: |
| | | | 1:2 | A1 | 00779 | ©=2266278 | |
| Customer Accessible Production Drawing | | | | SHEET 2 OF 4 | | REV C | |

Table with columns: PACIFIC VERSION TERMINATOR INTERFACE ADAPTER, PART NUMBER, REVISION, DESCRIPTION, FEED TYPE, CONVERT TO, PART NUMBERS REQUIRED.

Table with columns: CRIMP, SIZE, TYPE; APPLICATOR INSTRUCTIONS 408-10389.

Terminal data table: TE TERMINAL, TE CRIMP SPECIFICATION, WIRE STRIP LENGTH, INSULATION DIAMETER RANGE, TERMINAL APPLICATION SPECIFICATION, TERMINALS APPLIED.

Terminal data table: TE TERMINAL, TE CRIMP SPECIFICATION, WIRE STRIP LENGTH, INSULATION DIAMETER RANGE, TERMINAL APPLICATION SPECIFICATION, TERMINALS APPLIED.

Table with columns: WIRE SIZE, CRIMP HEIGHT mm [INCH], CRIMP HEIGHT REFERENCE SETTING.



- 1 RECOMMENDED SPARE PARTS
2 GREASE BEARING SURFACES LIGHTLY
3 LUBRICATE DAILY PER THE APPLICATOR INSTRUCTION SHEET SUPPLIED WITH THE APPLICATOR.
4 APPLICATOR SPECIFIC DATA TO BE ENTERED INTO BLANK MEMORY CHIP AT ASSEMBLY...
5 ADJUSTMENT OF THE STRIPPER MAY BE REQUIRED WHEN MOVING THE APPLICATOR BETWEEN BENCH AND LEADMAKER APPLICATIONS.
6 APPLY PART NUMBER 1-23419-5 LOCTITE TO THREADS OF ITEMS 62 & 180.
7 GREASE THREADS, GROOVE AND O-RING ON ITEMS 139 & 152.
8 MAGNET MUST BE ORIENTED CORRECTLY IN ORDER TO PROPERLY ACTUATE THE COUNTER.
9 CRIMP HEIGHT REFERENCE SETTING WAS THE SETTING USED WHEN THE APPLICATOR WAS QUALIFIED AT THE FACTORY...
10 TERMINAL PITCH NOT COMPATIBLE WITH MECHANICAL FEED.
11 TO CONVERT THE APPLICATOR TO A NON-CARRIER CUTTING STYLE, REMOVE ITEM 13 AND ATTACH TO THE LOCATION ON BACK SIDE OF THE HOUSING...

*WARNING
ON INSTALLATION, SET WIRE DISC, ITEM 40 TO LARGEST WIRE SIZE SETTING. USE OF SETTINGS BELOW MINIMUM REQUIRED CRIMP HEIGHT SETTING WILL CAUSE DAMAGE TO CRIMP TOOLING.

Table with columns: -77 -27 -25 -22 -21 PART NO, DESCRIPTION, ITEM NO.

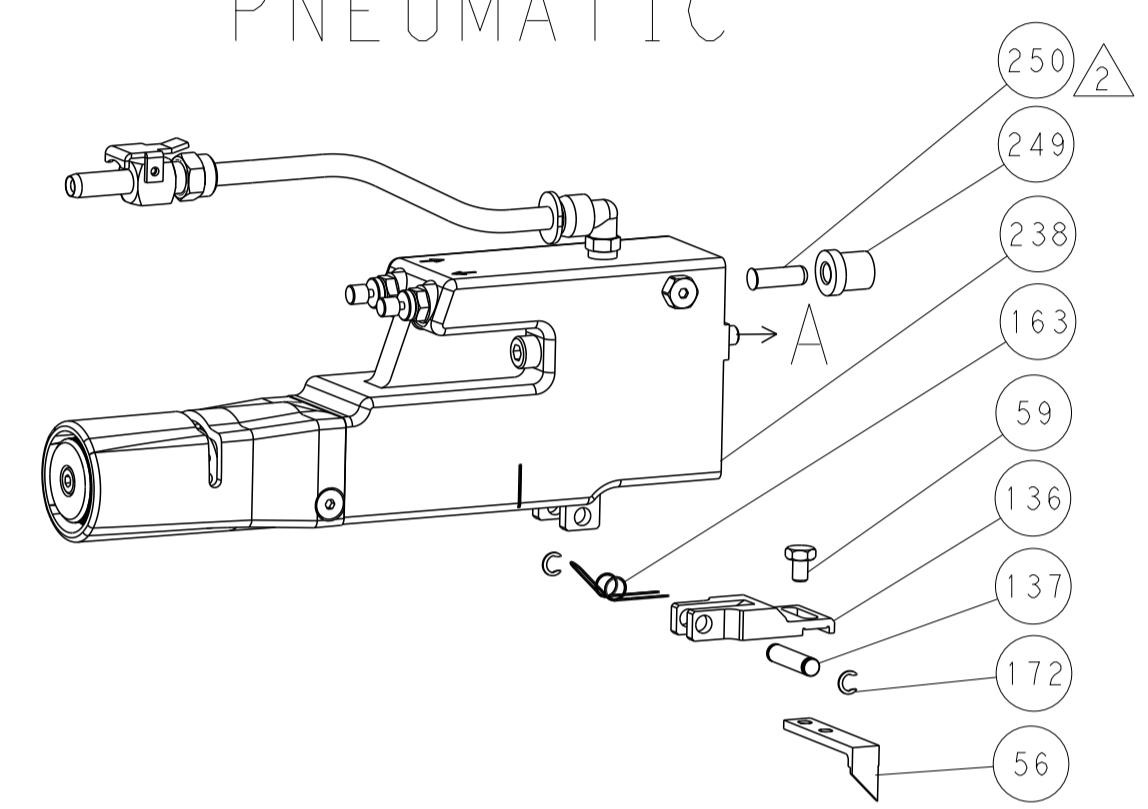
PACIFIC VERSION
Shown on sheets 3 of 4 & 4 of 4
(ATlantic version shown on sheets 1 of 4 & 2 of 4)

Large table with columns: P, LHM, DESCRIPTION, DATE, DWN, APVD. Contains a list of parts and their quantities.

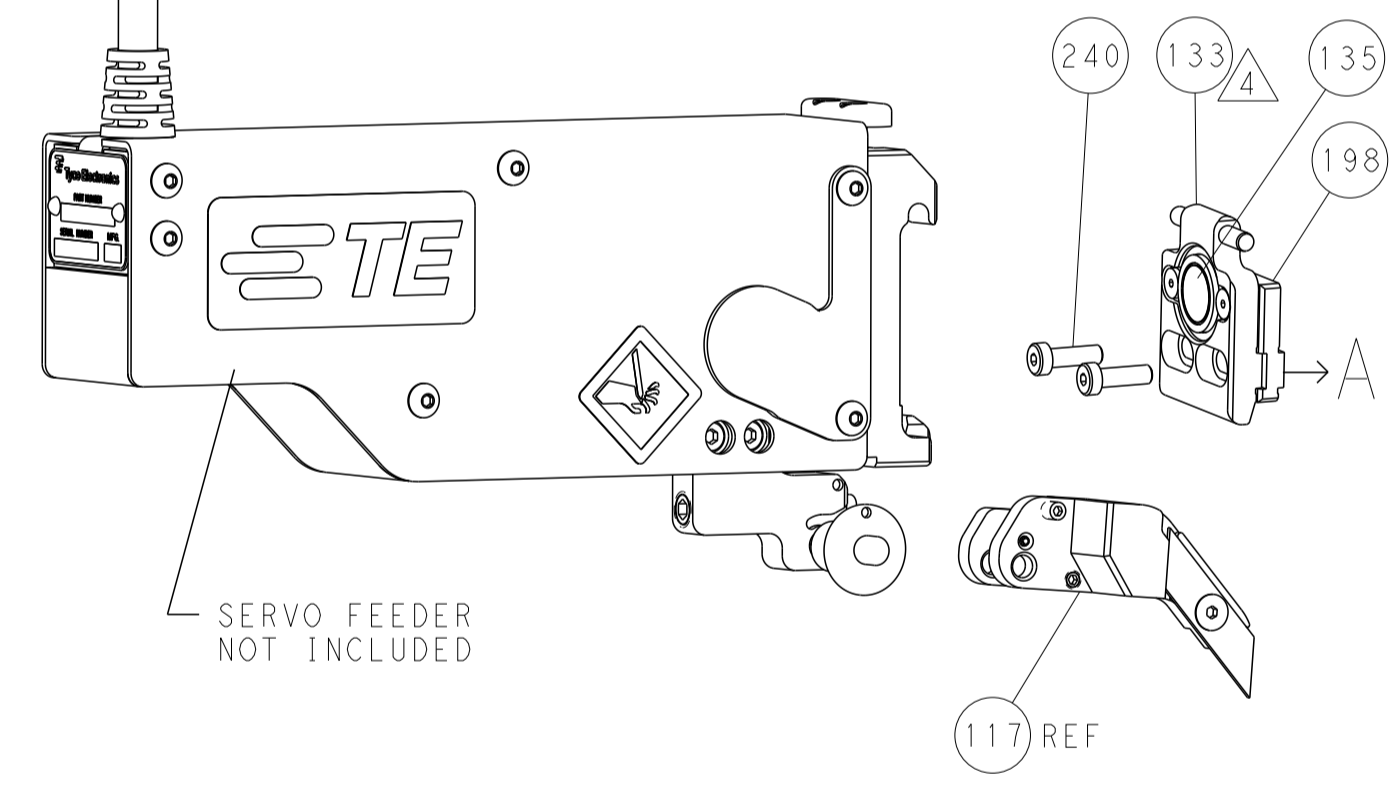
Product information block including dimensions, tolerances, material, weight, and company logo (STE).

| LOC | | DIST | | REVISIONS | | | |
|-----|----|------|-----|-------------|------|-----|------|
| A | 66 | P | LTM | DESCRIPTION | DATE | OWN | APVD |
| | | - | | SEE SHEET 1 | | | |

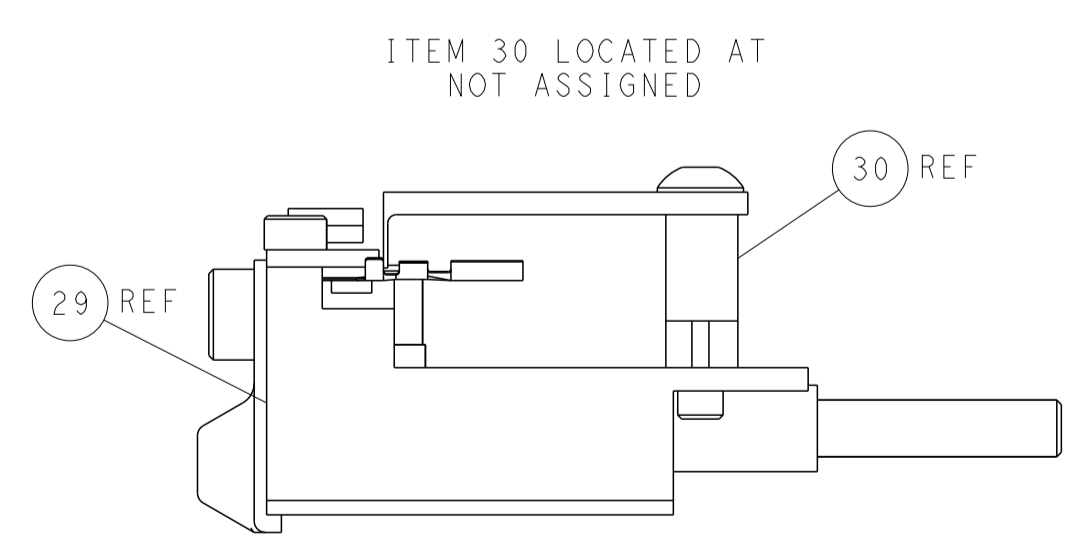
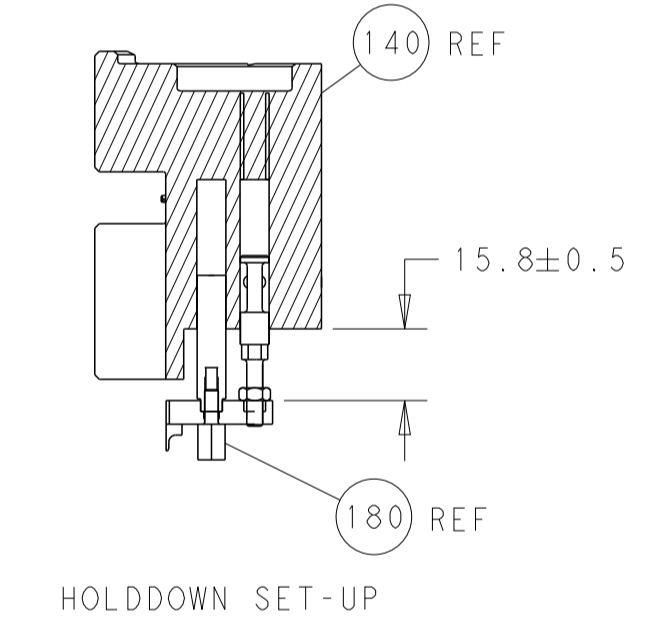
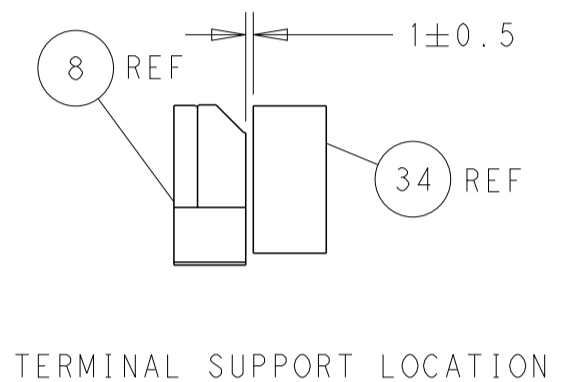
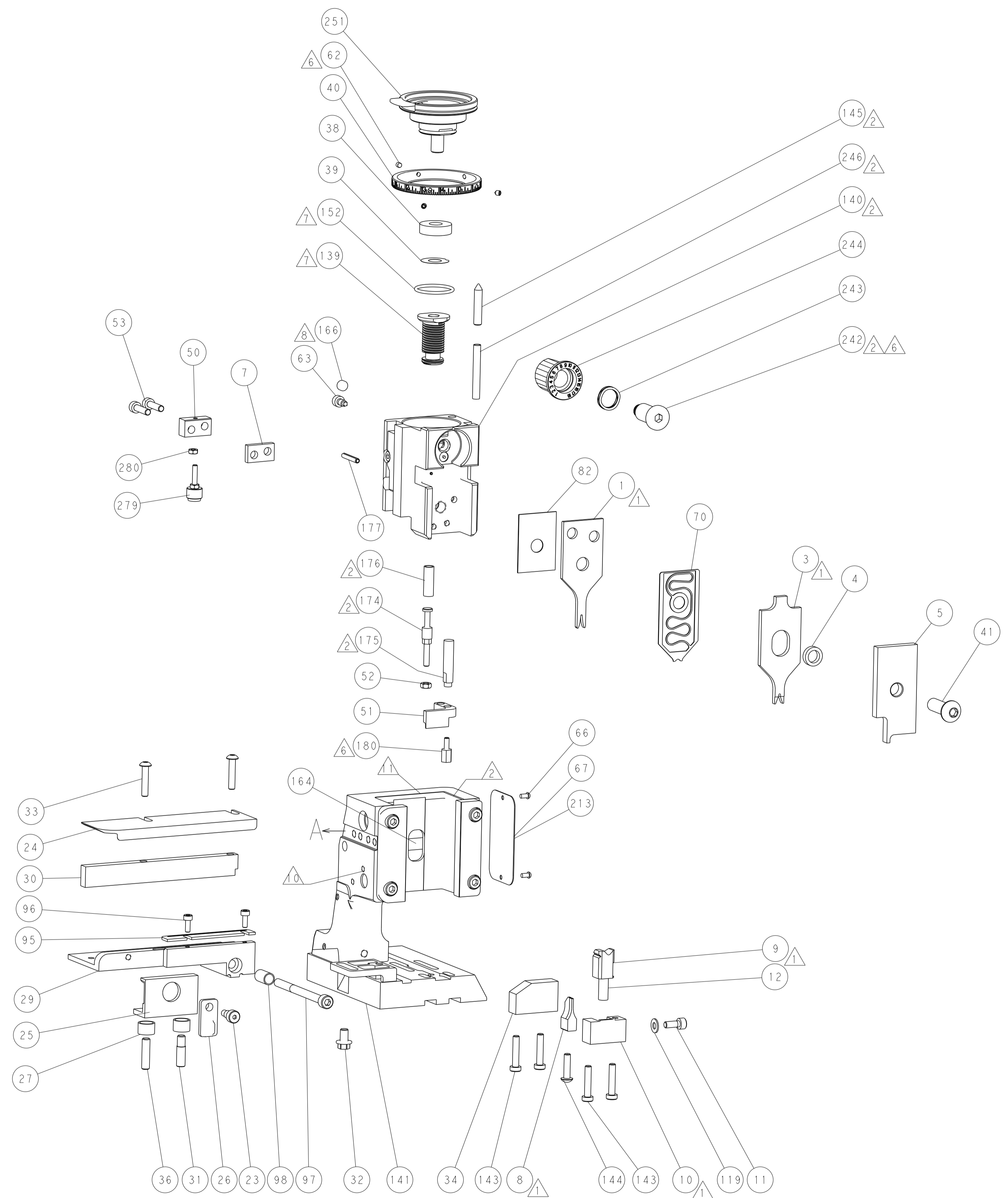
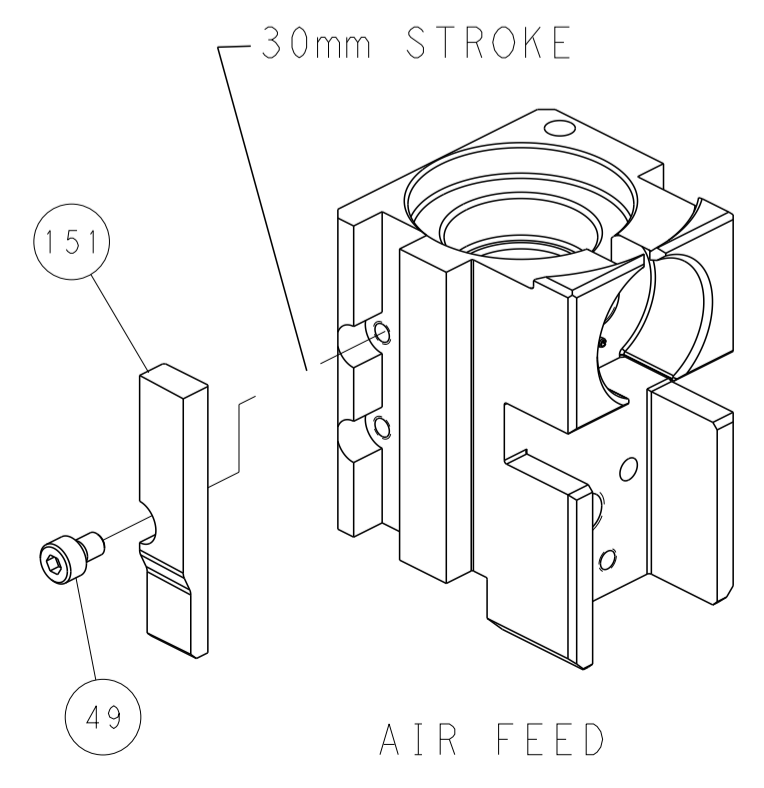
FEED TYPE PNEUMATIC



SERVO LATCH PLATE



CAM POSITION



PACIFIC VERSION
 Shown on sheets 3 of 4 & 4 of 4
 (Atlantic version shown on sheets 1 of 4 & 2 of 4)

| | | | | | | | | | | | |
|-------------|---------|--|---------|-----------------------|---------|--------------------------|--------|------------------------|------------|----------------------------------|-------|
| DIMENSIONS: | | TOLERANCES UNLESS OTHERWISE SPECIFIED: | | DWG: Y. YIN 24APR2014 | | CHK: G. BAILEY 24APR2014 | | APVD: J. GUO 24APR2014 | | NAME: Ocean Side Feed Applicator | |
| mm | 0 PLC ± | 1 PLC ± | 2 PLC ± | 3 PLC ± | 4 PLC ± | ANGLES | FINISH | WEIGHT | SCALE: 1:2 | SHEET: 4 | OF: 4 |
| MATERIAL: | | | | | | | | | | | |