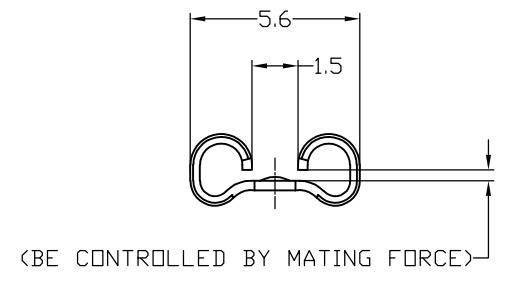
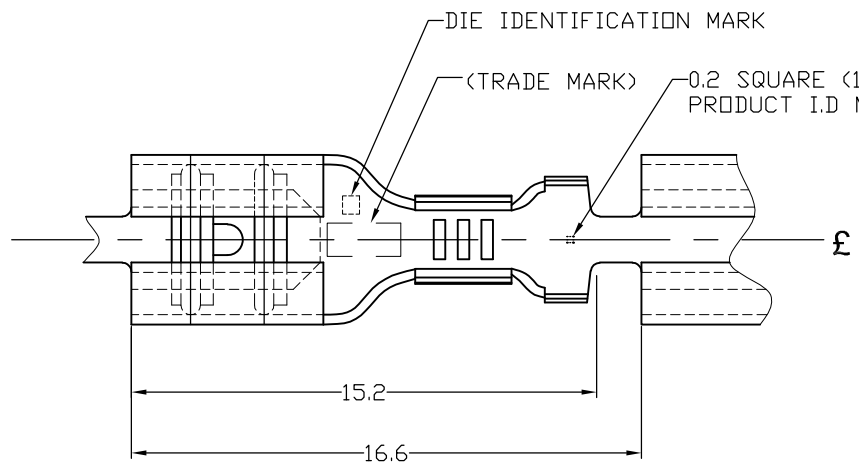


THIS DRAWING IS UNPUBLISHED. RELEASED FOR PUBLICATION
 © COPYRIGHT - By - ALL RIGHTS RESERVED.

| LOC | DIST | REVISIONS | | | | | |
|-----|------|-----------|-----|---------------------------|---------|-----|------|
| J | - | P | LTR | DESCRIPTION | DATE | DWN | APVD |
| | | # | L1 | REVISED PER ECO-11-005030 | 11MAR11 | RK | HMR |



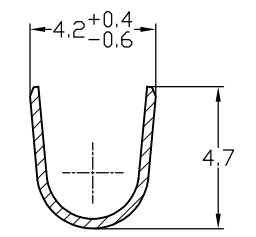
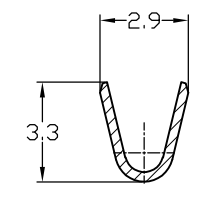
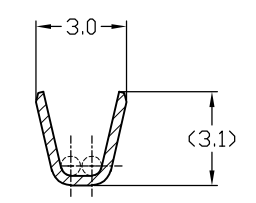
NOTE:

- SEE PRODUCT SPEC FOR THE DETAIL OF MATING TAB

△ STRESS RELIEVING

FINISH IS SUBJECT TO CHANGE BY THE TYPE OF STRESS RELIEVING PROCESS

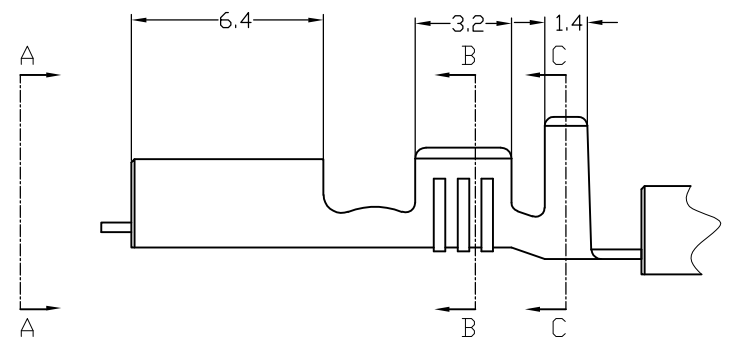
- * INERT GAS FURNACE.....MATTE
- * ATMOSPHERIC FURNACE FOLLOWING BY ACID PICKLE...BRIGHT



SECT. "B"-"B"
(-6 ONLY)

SECT. "B"-"B"

SECT. "C"-"C"



| MATING TAB THK. | PRODUCT SPEC NO. | L.P P/N | MATERIAL | FINISH | P/N |
|-----------------|------------------|----------|---------------|--|----------|
| | 108-5178 | --- | BRASS 0.32t | ELECTRICAL TIN PLATED WITHOUT STRESS RELIEVE | 170037-9 |
| | 108-5178 | --- | BRASS 0.32t | ELECTRICAL TIN PLATED | 170037-6 |
| | 108-5178 | 170038-5 | PRE-TIN BRASS | | 170037-5 |
| | 108-5178 | 170038-4 | PHOSBRO 0.32t | ELECTRICAL TIN PLATED | 170037-4 |
| | 108-5178 | 170038-3 | PHOSBRO 0.32t | --- | 170037-3 |
| | 108-5178 | 170038-2 | BRASS 0.32t | ELECTRICAL TIN PLATED | 170037-2 |
| 0.51t | 108-5008 | 170038-1 | BRASS 0.32t | --- | 170037-1 |

| | | | | | |
|---|--|----------------------------|--|--|------------------------------|
| WIRE RANGE 0.5~1.42 mm ^f (AWG #20~#16) | THIS DRAWING IS A CONTROLLED DOCUMENT. | | DWN LI HELEN 27AUG2004 | TE Connectivity 187 SERIES FASTON RECEPTACLE | |
| | INSULATION DIA 2.29~3.3 | DIMENSIONS: 単位: 耗 mm | TOLERANCES UNLESS OTHERWISE SPECIFIED: 一般公差 | | |
| TOLERANCES ±0.4 | MATERIAL 材料 SEE TABLE | FINISH 仕上 SEE TABLE | PRODUCT SPEC 製品規格 108-5008 | APPLICATION SPEC 取付適用規格 114-5084 | NAME 名称 |
| | | | WEIGHT 0.35g/ea | SIZE A3 | CAGE CODE 00779 |
| | | | CUSTOMER DRAWING | | DRAWING NO 番号 C-170037 |
| | | | SCALE 尺度 4:1 | SHEET 1 OF 1 | REV L1 |