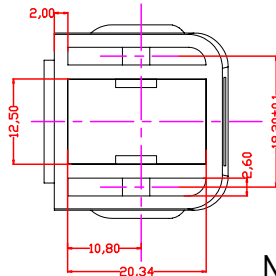
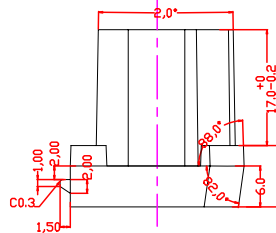
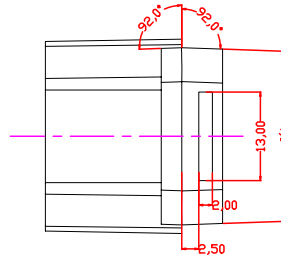
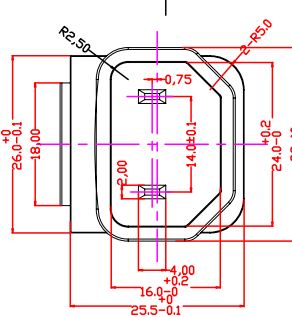
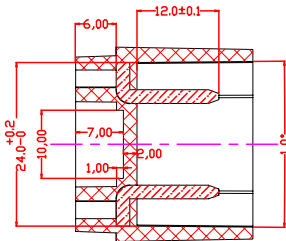
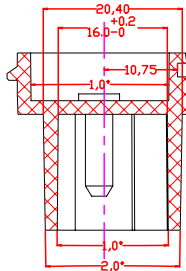
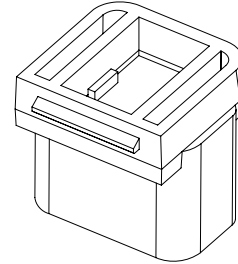
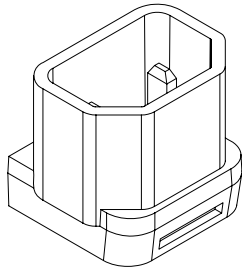


PROPRIETARY INFORMATION:
 PROPRIETARY OF GLOBTEK, INC. ANY REPRODUCTION, DISCLOSURE OR USE OF THIS DRAWING, IN WHOLE OR IN PART, IS HEREBY PROHIBITED EXCEPT AS SPECIFIED IN WRITING BY GLOBTEK, INC.

| REVISION | | | |
|----------|---------------------------------|----------|----------|
| REV | DESCRIPTION | DATE | APPROVED |
| A | INITIAL RELEASE, RFS. 12913, BS | 01/31/08 | HM |
| B | REVISE DRAWING, RFS. 13071, BS | 02/28/08 | HM |
| C | REVISE DRAWING, RFS. 13758, BS | 05/28/08 | HM |




NOTE: ALL DIMENSIONS ARE IN MILLIMETERS.

Foot Note:
 Globtek Inc. will not be liable for the safety and performance of these power supplies if unauthorized access and repair occurs. End user should consult applicable UL, CSA or EN standards for proper installation instructions

| DASH NO. | PART NO | REV. | DESCRIPTION | NOTES |
|-------------------------|---------|------|-------------|-------|
| TABULATION BLOCK | | | | |

Limitation of Use:
 Globtek product are not authorized for use as mission critical components in life support, hazardous environment, nuclear or aircraft applications without prior written approval from the CEO of Globtek Inc.

| | | | | | |
|--|--|----------------|---|--------------------------|---|
| INIT.BY: BS | | DATE: 01/31/08 | TOLERANCES: DECIMALS ANGULAR .xx +/- 0.1 +/- 1° .xxx +/- .005 | |  186 Veterans Dr. Northvale, NJ 07647 Tel. 201-784-1000 Fax 201.784.0111 |
| DRAWN: NF | | DATE: 01/31/08 | MILLIMETERS ANGULAR .xx +/- 0.3 +/- 1° .xxx +/- .013 | | |
| APRVD: HS | | DATE: 01/31/08 | FSCN No.: G, CC | SIZE A | DWG TITLE: IEC320-C18 REV. C |
| CONTENTS OF THIS DOCUMENT ARE SUBJECT TO CHANGE WITHOUT PRIOR NOTICE | | SCALE: NONE | | PART NO: Q-C18(R) | SHEET 1/ 1 |