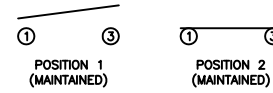


**SCHEMATIC**



**SPECIFICATIONS**

**FUNCTION:**  
1P1T OFF-ON

**RATINGS:**  
ANSI/UL 1054 and CAN/CSA C22.2 No.55 (E194579):  
16A 125VAC [UR, cUR]  
1/2HP 125VAC [UR, cUR]  
3/4HP 250VAC [UR, cUR]

EN 61058-1:2002:  
16(6)A 250V~ 1E4 T125/55 [ENEC14, SEMKO]  
10(4)A 250V~ 5E4 T125/55 [ENEC14, SEMKO]

**CONTACT RESISTANCE:**  
Initial: 35mΩ Max. at 50VAC

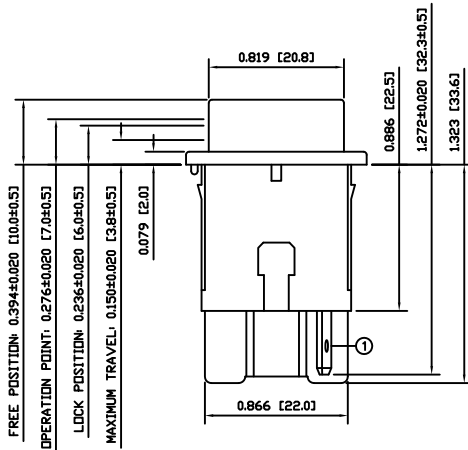
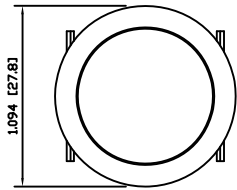
**INSULATION RESISTANCE:**  
100MΩ Min. at 500VDC

**DIELECTRIC STRENGTH:**  
1,500VAC For 1 Minute

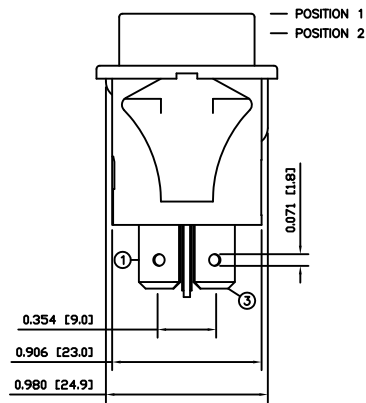
**ELECTRICAL LIFE:**  
6,000 Cycles [UR, cUR]  
10,000 Cycles [VDE]  
50,000 Cycles [VDE]

**TEMPERATURE:**  
Operating: -20°C to 105°C [UR, cUR]  
Operating: -20°C to 125°C [VDE]

**APPROVALS:**



FREE POSITION: 0.394±0.020 [10.0±0.5]  
OPERATION POINT: 0.276±0.020 [7.0±0.5]  
LOCK POSITION: 0.236±0.020 [6.0±0.5]  
MAXIMUM TRAVEL: 0.150±0.020 [3.8±0.5]



**COLORS AND MARKINGS**

**BODY:**  
Black

**ACTUATOR:**  
Red  
Glossy Finish

**MARKINGS:**  
None

**MARKING COLOR:**  
None

**MATERIALS**

**BODY:**  
Polyamide 6/6 (PA66), UL94 V-2

**ACTUATOR:**  
Polyamide 6/6 (PA66), UL94 V-2

**CONTACT CARRIER:**  
Polyamide 6/6 (PA66), UL94 V-2

**SPRINGS:**  
Steel

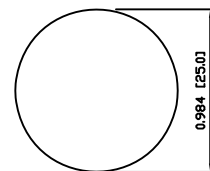
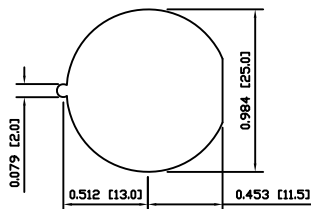
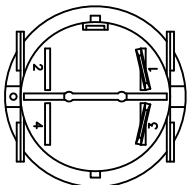
**MOBILE CONTACT:**  
Silver Plated Copper

**CONTACTS:**  
Silver Plated Copper

**TERMINALS:**  
Silver Plated Copper

**SUGGESTED PANEL CUTOUT**

**ALTERNATE PANEL CUTOUT**



BODY	A	09/08/07	CAB
COLORS	A	09/08/07	CAB
MATERIALS	A	09/08/07	CAB
SPECIFICATIONS	A	09/08/07	CAB
REFERENCE	REV.	DATE	BY

THE INFORMATION CONTAINED IN THIS DOCUMENT IS PROPRIETARY TO E-SWITCH AND IS NOT TO BE COPIED OR TRANSFERRED

INITIAL RELEASE	PCRD0051	09/08/07	CAB
DESCRIPTION	PCR	DATE	DRAWN BY

<b>DIMENSIONS</b>	INCHES [MILLIMETERS]
<b>GENERAL TOLERANCES</b>	±0.008 [±0.2] / ±1°
<b>SCALE</b>	DRAWING NOT TO SCALE
<b>PROJECTION</b>	First Angle

PR141C1900

<b>DRAWING NUMBER</b> 38-PR141C1900	<b>DATE</b> AUGUST 7, 2009	<b>REVISION</b> A
--	-------------------------------	----------------------