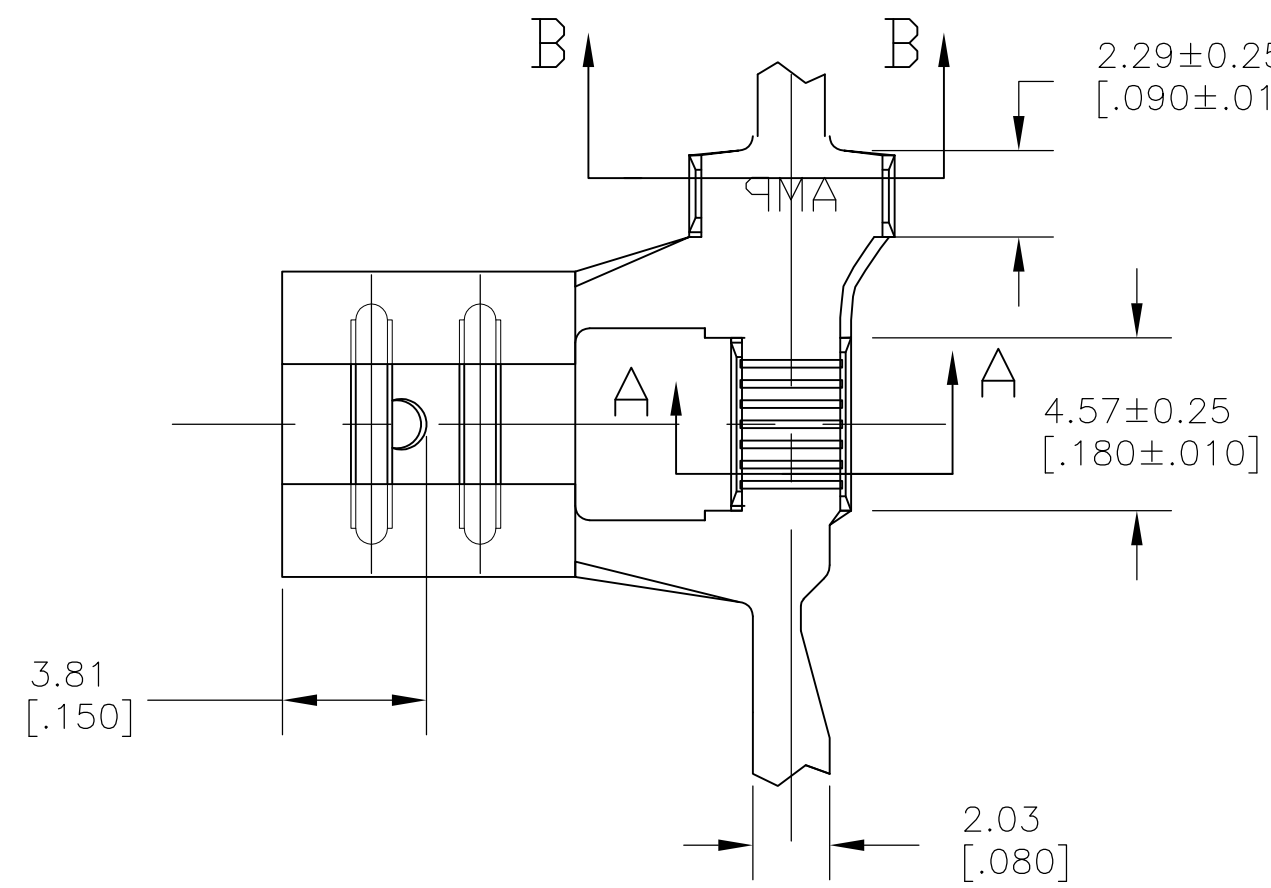
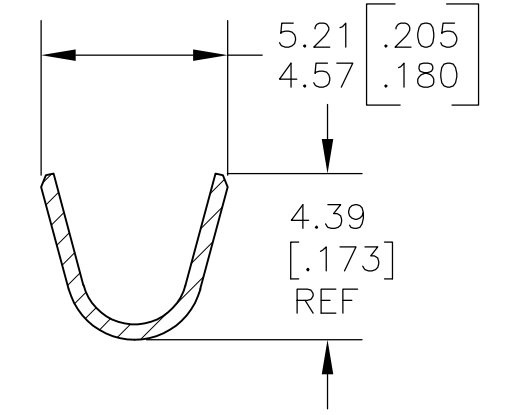
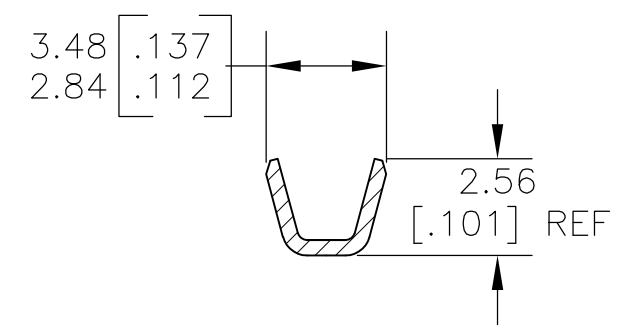
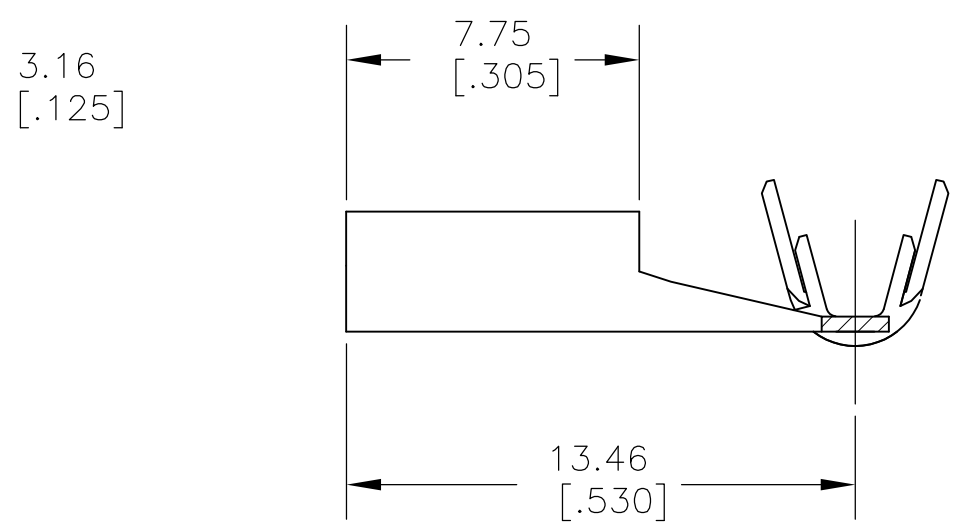
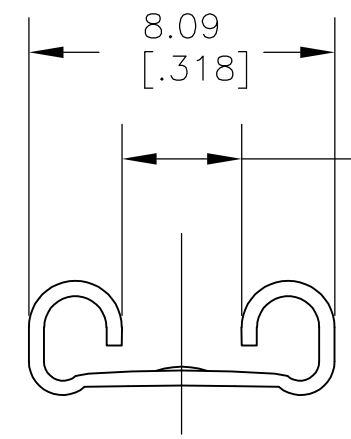


THIS DRAWING IS UNPUBLISHED. RELEASED FOR PUBLICATION
 © COPYRIGHT - By - ALL RIGHTS RESERVED.

LOC	DIST	REVISIONS			
P	LTR	DESCRIPTION	DATE	DWN	APVD
AF	50	A2	RELEASED PER ECO 11-022700	10NOV11	JR PD



- 1 CONTINUOUS STRIP ON REELS
- 2 WIRE SIZE IS 1000-2700 CMA (2 WIRES)
(0.6+0.6mm) to (1.0+0.85mm) DIA
CRIMP WIDTH IS 2.29 [.090], F TYPE
- 3 INSULATION RANGE 2.54-3.05 [.100-.120] DIA
CRIMP WIDTH IS 3.56 [.140], OVERLAP TYPE
- 4 0.002032 [.00080] MIN TIN PLATE
- 5 MATING TAB THK IS 0.81±0.025 [.032±.001].



SECTION A-A SECTION B-B

1742882-1
PART NO

THIS DRAWING IS A CONTROLLED DOCUMENT.		DWN jr_ruth 08DEC10	TE Connectivity		
DIMENSIONS: MM [INCHES]		CHK PETE_DESANTIS 08DEC10			
TOLERANCES UNLESS OTHERWISE SPECIFIED:		APVD PETE_DESANTIS 08DEC10	RECEPTACLE, FASTON, FLAG, AMPLIVAR, 6.35 [.250] SERIES		
0 PLC ± - 1 PLC ± - 2 PLC ± 0.25 [.010] 3 PLC ± - 4 PLC ± - ANGLES ± 5°		PRODUCT SPEC	RESTRICTED TO		
MATERIAL 4M BRASS		APPLICATION SPEC	SIZE	CAGE CODE	DRAWING NO
FINISH -4		WEIGHT	A3	00779	C-1742882
CUSTOMER DRAWING			SCALE	SHEET	REV
			5:1	1 OF 1	A2