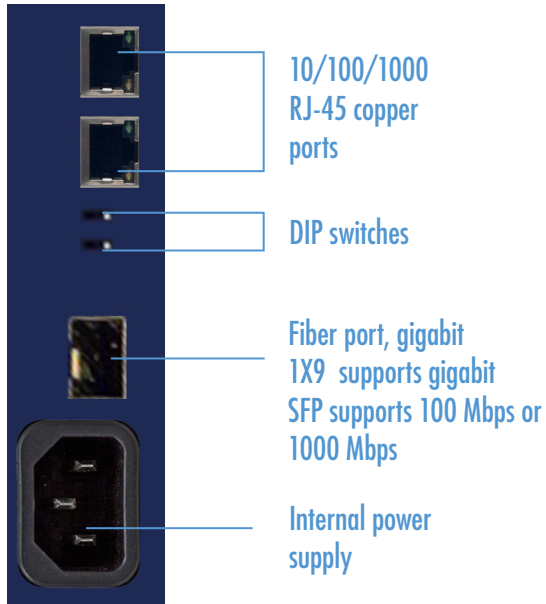


Product Overview



1 Connect Your Converter

Copper ports (RJ-45 port) The media converter can handle CAT 5 or better.

FX: (Fiber Port) if using a duplex fiber cable, connect transmit port of one unit to receive port on the other. Make sure the fiber types match on both sides of the link.

LNK/ACT: (Above RJ45s) Glows green with a valid link. Blinks Green when activity is detected.

LNK:(FX LED Stack) Glows green with a valid Link.

SSF (Single Strand Fiber) requires one strand of fiber but two mated products.

2 Set the DIP Switches

The SFP version of the Giga-McBasic II supports a LOW SPD dip switch located on the front on the unit.

LOW SPD SWITCH ON THE SFP VERSION	Switch
SFP forced to 100 Mbps	UP
SFP recognizes 1000 Mbps	DOWN

The Giga-McBasic II includes a Link Fault Pass-Through (LFPT) DIP Switch, located on the front of the unit.

Link Fault Pass-Through (LFPT) is a troubleshooting feature that combines TX and FX LinkLoss from both the local and remote Giga-McBasic II, TX-FX/SFP modules.

LFPT is enabled by setting the DIP Switch to ON. This feature allows either end of the conversion to detect a link fault occurring at the other end of the media conversion chain.

On the Giga-McBasic II LFPT is supported on the connector closest to the dip switch.

LFPT	Switch
LFPT ON	UP
LFPT OFF	DOWN



Modules can be connected to other B&B Media converters

3 LED Operation

Fiber LEDs



The fiber LED stack is located on top of the device.

FLT	Glows red when a fault has been detected on the unit
LNK	Glows green with a valid fiber link
1000 Mbps	Glows green when running at 1000 Mbps
PWR	Glows green when unit is powered

RJ-45 LEDs



The RJ-45 LEDs are located on the RJ-45 connectors.

LNK/ACT	Glows green with a valid link Blinks green when activity is detected
FDX	Glows amber when port is running full duplex

Troubleshooting

Check Type of Cable Used

A CAT 5 or higher Ethernet cable is required for the RJ-45 port. Make sure pins are not pulled out of the connector's casing, which will cause damage to the media converter's copper port.

Check Fiber Type and Speed

Make sure fiber types match on both sides of the fiber connection; confirm speed capability at each end of the installation.

Using LFPT

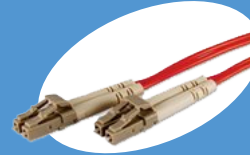
When troubleshooting media converters, it is advisable to disable any diagnostic features such as LFPT. Disable LFPT front dip switch.

For information about warranty and product specifications, please refer to the datasheet or the website.

Recommended Accessories

Fiber Optic Cable

<http://www.bb-elec.com/Products/Power-Supplies-Accessories/Fiber-Optic-Cables.aspx>



Ethernet Cable

<http://www.bb-elec.com/Products/Power-Supplies-Accessories/Ethernet-Cables.aspx>



Fast, Easy Answers...

- Please double check Step 2.
- You can also use your smart phone to access complete documentation on our website. Simply scan code to the right.



1-888-948-2248 | Europe: +353 91 792444

www.bb-smartworx.com

707 Dayton Road | PO Box 1040 | Ottawa, IL 61350
Phone: 815-433-5100 | Fax: 815-433-5109
www.bb-smartworx.com | E-mail: info@bb-elec.com

© 2015 B+B SmartWorx

Document number – pn56-85501-00_R1_Giga-McBasic_II_2415qsg

B+B SMARTWORX. QUICK START GUIDE



Giga-McBasic II Media Converter

✓ First Things First...

Before you begin, be sure you have the following:

- Giga-McBasic II
- Additional Items Required But Not Included:
 - Fiber cabling, dependent on fiber type
 - CAT 5 Ethernet cable



Fast and easy on the web: www.bb-smartworx.com