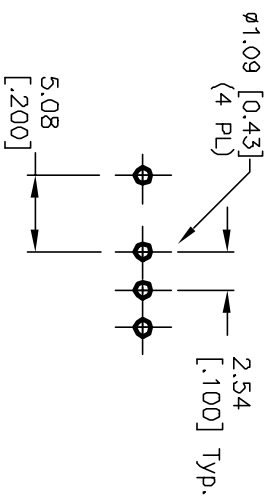
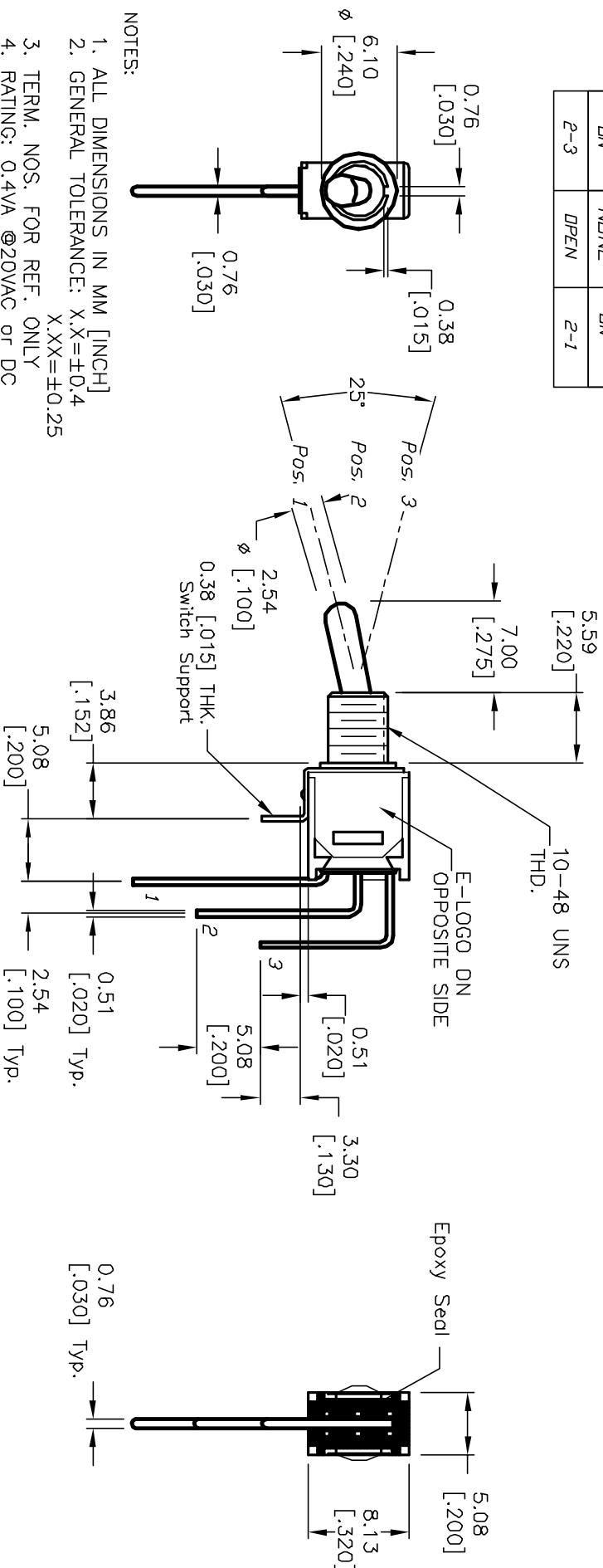


CIRCUIT: SPDT
CONTACT CONFIGURATION

| SWITCH FUNCTION | | |
|-----------------|--------|--------|
| POS. 1 | POS. 2 | POS. 3 |
| DN | NONE | DN |
| 2-3 | OPEN | 2-1 |



RECOMMENDED P.C.B. LAYOUT



NOTES:

1. ALL DIMENSIONS IN MM [INCH]
2. GENERAL TOLERANCE: X.X=±0.4 X.XX=±0.25
3. TERM. NOS. FOR REF. ONLY
4. RATING: 0.4VA @20VAC or DC
5. FIXED TERM. MOVING CONTACT:
Copper Alloy w/GOLD plating over Nickel plate.
6. ELECTRICAL LIFE: 30,000 make-and-break cycle at full load.
7. DIELECTRIC STRENGTH: 1,000 V RMS @sea level.
8. OPERATING TEMP.: -30°C to 85°C
9. ▲ DESIGNATE MAJOR FEATURE:

E-SWITCH®

| | | | | | | | | | | | | | | | |
|---|---------|---------------------|-------------|--|-----|--------|-----|---------|---|----|--|-----|--|-----|--|
| REV. B | | REVISED AND REDRAWN | | TITLE | | SCALE | | DATE | | DR | | DWG | | REV | |
| 12110 | ECN NO. | 5/3/02 | DESCRIPTION | 200 MSP-1 T3 B3 M7 R E (GOLD CONTACTS) | 2:1 | 5/3/02 | CJB | T211004 | B | | | | | | |
| <p>THE INFORMATION CONTAINED IN THIS DOCUMENT IS PROPRIETARY TO E-SWITCH AND IS NOT TO BE COPIED OR TRANSMITTED</p> | | | | | | | | | | | | | | | |