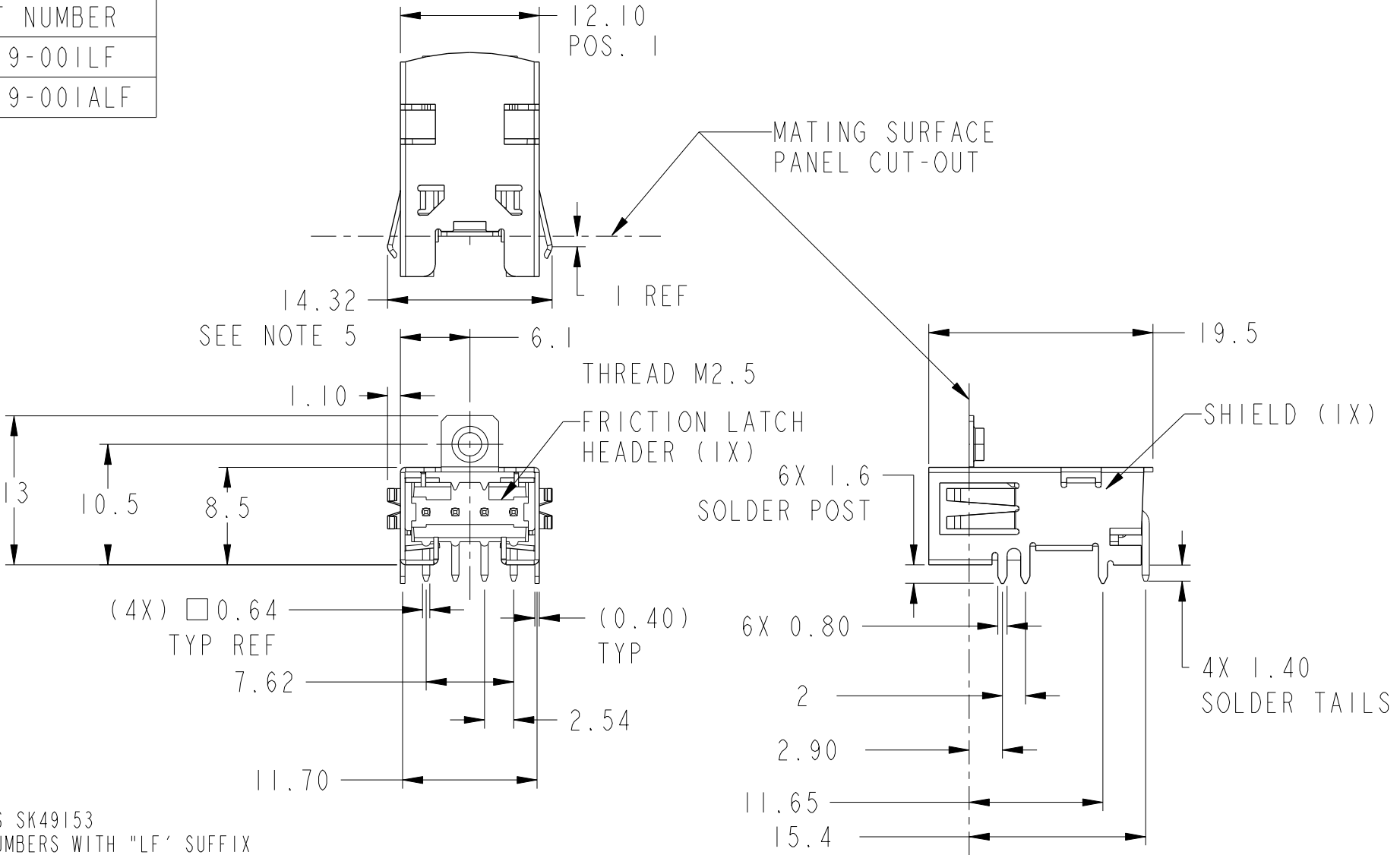


PRODUCT NUMBER  
 10066619-001LF  
 10066619-001ALF



- NOTES:
1. P/N WAS SK49153
  2. PART NUMBERS WITH "LF" SUFFIX ARE LEAD FREE.
  3. PACKAGING OPTIONS: PART NUMBER WITHOUT A SUFFIX ARE PACKAGED WITH TRAY. PART NUMBER FOLLOWED BY AN "A" SUFFIX ARE PACKAGED WITH TAPE&REEL.
  4. SHIELD MATERIAL ONLY, IS PHOSPOR BRONZE H04 TEMPER. 0.4mm THICK WITH 1.27-2.54um THICK NICKEL OVER PLATE.
  5. EDGES OF THE SHIELD WILL BE UNPLATED.
  6. COMPRESSED 13.6 WHEN ASSEMBLED TO PANEL CUT OUT.

| rev | ecn no   | dr  | date       |
|-----|----------|-----|------------|
| A   | V06-0554 | DAI | 2006-06-12 |
| B   | M06-0418 | MHT | 2006-10-23 |
| C   | V07-0050 | MHT | 2007-01-30 |
| D   | M07-0207 | MHT | 2007-05-04 |
| E   | N10-0380 | R.B | 2010-11-09 |
| F   | N11-0061 | J.Z | 2011-03-03 |
| -   | -        | -   | -          |

|                    |  |                           |                             |                 |              |
|--------------------|--|---------------------------|-----------------------------|-----------------|--------------|
| www.fciconnect.com |  | surface - ✓<br>ASME Y14.5 | tolerance std<br>ASME Y14.5 | projection<br>⊕ | MM           |
| Dr D. INGRAM       |  | 03/29/06                  |                             | ANGULAR         | LINEAR       |
| Eng H. SUNDY       |  | 03/29/06                  |                             | 0.X ±.3         | 0.XX ±.10    |
| Chr H. SUNDY       |  | 03/29/06                  |                             | 0° ±2°          | 0.XXX ±.050  |
| Appr H. SUNDY      |  | 03/29/06                  |                             | Product family  | HEADER       |
| FCI                |  | POWER HEADER ASSEMBLY     |                             | size            | A4           |
| title              |  | -                         |                             | Scale           | 2:1          |
| catalog no         |  | -                         |                             | ECN             | N11-0061     |
| -                  |  | -                         |                             | Spec ref        | -            |
| -                  |  | -                         |                             | dwg no          | 10066619     |
| -                  |  | -                         |                             | Rev.            | F            |
| -                  |  | -                         |                             | CUSTOMER        | sheet 1 of 4 |



Copyright FCI.

|                 |
|-----------------|
| PRODUCT NUMBER  |
| 10066619-001LF  |
| 10066619-001ALF |

7.62

3X 2.54

1.27

POS 1

☉ OF DATUM B  
AND  
DATUM C

POS 4

☉ Ø 0.10 A B C

(15.4)

12.50

8.75

2.00

1.50

PANEL INSIDE SURFACE

Ø 1.02 REF

☉ Ø 0.10 A B

C

10 X Ø 1.02

☉ Ø 0.10 A

B

5.85

11.70

**RECOMMENDED BOARD LAYOUT**

SCALE 3:1



|       |                       |   |        |          |              |      |   |
|-------|-----------------------|---|--------|----------|--------------|------|---|
| title | POWER HEADER ASSEMBLY |   | dwg no | 10066619 |              | Rev. | F |
|       | catalog no            | - |        | CUSTOMER | sheet 2 of 4 |      |   |

REV F - 2006-04-17



Copyright FCI.

|                 |
|-----------------|
| PRODUCT NUMBER  |
| 10066619-001LF  |
| 10066619-001ALF |

A

B

C

D

2

3

4

13.60  
 $\oplus$  0.10 A B C

12.60 ± 0.05  
 $\oplus$  0.10 A C  
 B

∅ 2.90  
 $\oplus$  ∅ 0.10 A B C

4.400  
 $\oplus$  0.10 A C B

A

C

10.70

8.90

$\oplus$  0.10 A C B

4.90

∅ OF DATUM B

**RECOMMENDED  
 PANEL CUT-OUT**  
 SCALE 2:1



|            |                       |          |              |      |   |
|------------|-----------------------|----------|--------------|------|---|
| title      | POWER HEADER ASSEMBLY | dwg no   | 10066619     | Rev. | F |
| catalog no | -                     | CUSTOMER | sheet 3 of 4 |      |   |

REV F - 2008-04-17

2

3 PDM: Rev:F

STATUS: Released

4 Printed: Mar 08, 2011



Copyright FCI.

PRODUCT NUMBER

10066619-001LF

10066619-001ALF

A

B

C

D

A

B

C

D

15.40

1.00 MAX

PCB

PANEL

1.50±0.10

(10.50)

8.70

(0.20)

TOP SURFACE  
PCB BOARD

C

DATUM C  
PANEL CUT-OUT

RECOMMENDED PCB LAYOUT  
AND  
PANEL CUT-OUT SHOWN

SCALE 2:1



title POWER HEADER ASSEMBLY

-

catalog no

dwg no

10066619

Rev.

F

CUSTOMER

sheet 4 of 4



Copyright FCI.