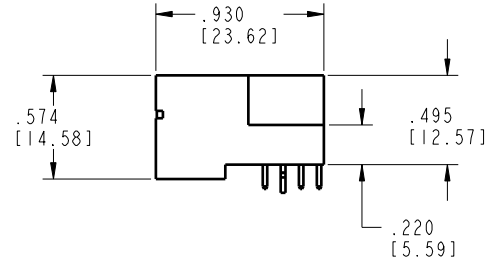
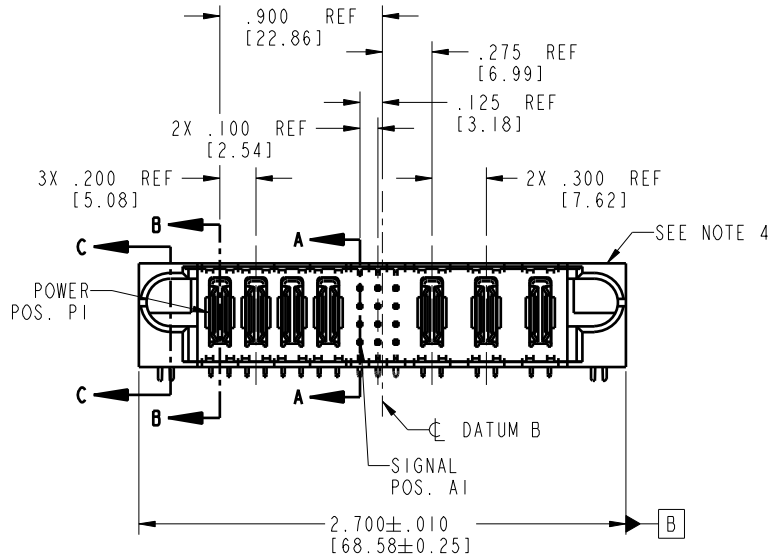
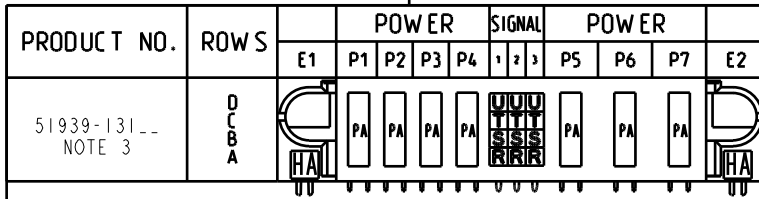


Tous droits strictement réservés. Reproduction ou communication à des tiers interdite sans quelque forme que ce soit sans autorisation écrite du propriétaire. Propriété de c FCI. Droits de reproduction FCI.

All rights strictly reserved. Reproduction or issue to third parties in any form whatsoever is not permitted without written authority from the proprietor. Property of FCI. Copyright FCI.



CODE	DIM "M" MATING LENGTH	CONTACT TYPE
R	.270 [6.86]	SIGNAL
S	.270 [6.86]	SIGNAL
T	.270 [6.86]	SIGNAL
U	.270 [6.86]	SIGNAL
PA	N/A [N/A]	POWER
HA	N/A [N/A]	HOLD-DOWN

mat'l code				SEE NOTE 2		tolerances unless otherwise specified		CUSTOMER	
lir	ecr no.	dr	date	linear	.XX±.01/0.X±0.3	COPY		A FCI www.fciconnect.com	
A	V04-0748	TAB	07/21/04		.XXX±.005/0.XX±0.13	projection		title 4P + 12S + 3ACP	
B	DG06-0013	RYAN	01/11/06		.XXX±.002/0.XXX±0.051	INCH/MM		RIGHT ANGLE SOLDER HEADER	
				angles	0°±2°	scale		product family PwrBlade code 213	
				dr	T. BRUNGARD 07/21/04	1:1		size dwg no 51939-131	
				engr	M. GRAY 07/21/04			sheet 1 of 4	
				chr	M. GRAY 07/21/04				
				opqd	M. GRAY 07/21/04				
sheet index	revision	B	B	B	B				
	sheet	1	2	3	4				

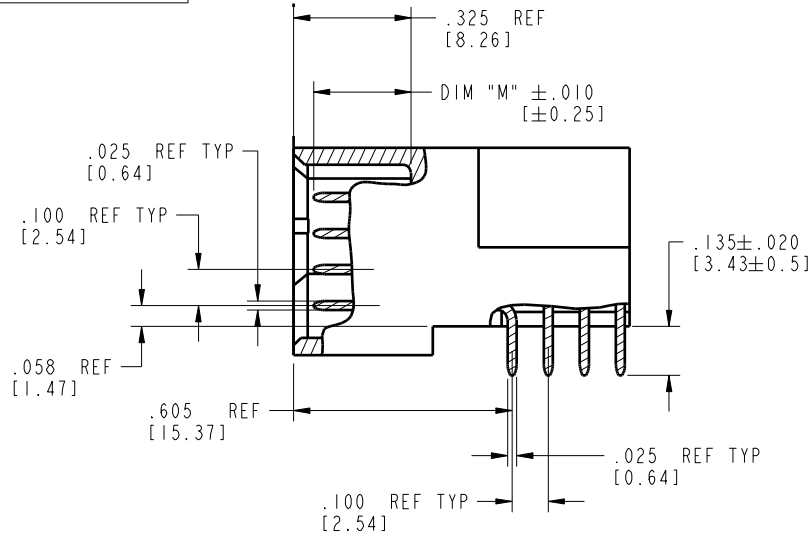
code code 22526

Pro/E

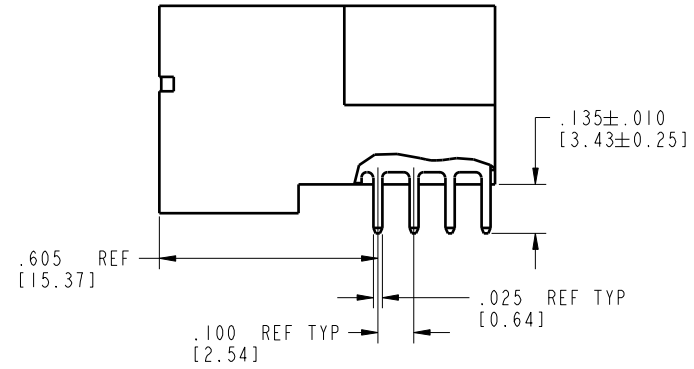
Tous droits strictement réservés. Reproduction ou communication à des tiers interdite sous quelque forme que ce soit sans autorisation écrite du propriétaire. Propriété de c FCI. Droits de reproduction FCI.

All rights strictly reserved. Reproduction or issue to third parties in any form whatsoever is not permitted without written authority from the proprietor. Property of FCI. Copyright FCI.

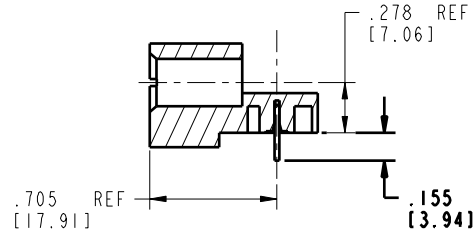
**PRODUCT NUMBER**  
51939-131\_\_  
NOTE 3



BROKEN-OUT SECTION A-A  
SCALE 2:1



BROKEN-OUT SECTION B-B  
SCALE 2:1



SECTION C-C

mat'l code SEE NOTE 2				tolerances unless otherwise specified		CUSTOMER		<b>FCI</b>		www.fciconnect.com	
lir	ecr no.	dr	date	linear	.XX±.01/0.X±0.3	COPY		projection		title 4P + 12S + 3ACP	
B					.XXX±.005/0.XX±0.13			RIGHT ANGLE		SOLDER HEADER	
				angles	.XXX±.002/0.XXX±0.051			INCH/MM		product family PwrBlade	
				dr	0°±2°			scale 1:1		code 213	
				eng	T. BRUNGARD 07/21/04			size A		sheet 2 of 4	
				chr	M. GRAY 07/21/04			dwg no 51939-131			
				appd	M. GRAY 07/21/04						
sheet index	revision sheet										

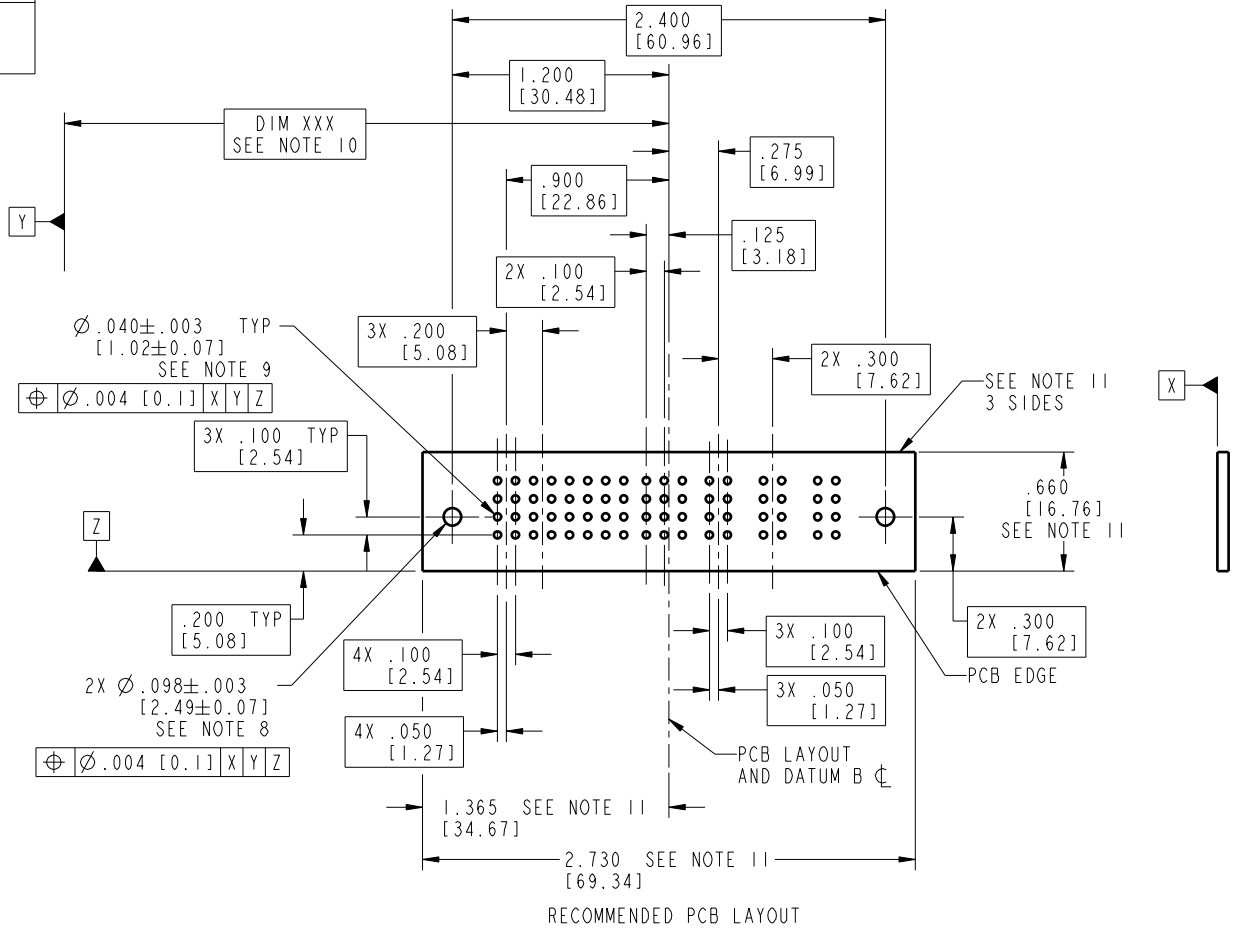
code code 22526

Pro/E

Tous droits strictement réservés. Reproduction ou communication à des tiers interdite sous quelque forme que ce soit sans autorisation écrite du propriétaire. Propriété de c FCI. Droits de reproduction FCI.

All rights strictly reserved. Reproduction or issue to third parties in any form whatsoever is not permitted without written authority from the proprietor. Property of FCI. Copyright FCI.

**PRODUCT NUMBER**  
51939-131--  
NOTE 3



mat'l code				SEE NOTE 2	tolerances unless otherwise specified		CUSTOMER		 www.fciconnect.com
lir	ecn no.	dr	date	linear	.XX±.01/0.X±0.3	COPY		projection	
B					.XXX±.005/0.XX±0.13	INCH/MM		title	
				angles	.XXX±.002/0.XXX±0.051	scale		4P + 12S + 3ACP	
				dr	0°±2°	1:1		RIGHT ANGLE SOLDER HEADER	
				enr	T. BRUNGARD 07/21/04	product family		PwrBlade	
				chr	M. GRAY 07/21/04	size		code	
				appd	M. GRAY 07/21/04	A		213	
sheet index	revision sheet					51939-131		sheet	
						3 of 4			

code code 22526

Pro/E

Tous droits strictement réservés. Reproduction ou communication o des liers interdite sous quelque forme que ce soit sans autorisation écrite du propriétaire. Propriété de c FCI. Droits de reproduction FCI.



All rights strictly reserved. Reproduction or issue to third parties in any form whatsoever is not permitted without written authority from the proprietor. Property of FCI. Copyright FCI.

1 | 2

3 |

4

**PRODUCT NUMBER**

51939-131\_\_  
NOTE 3

NOTES:

1. DIMENSIONS AND TOLERANCES ARE IN ACCORDANCE WITH ASME Y14.5M, 1994 UNLESS OTHERWISE SPECIFIED.

CONNECTOR NOTES:

- 2. HOUSING MATERIAL: UL 94 V-0 GLASS FILLED HIGH-TEMP THERMOPLASTIC  
POWER CONTACT MATERIAL: COPPER ALLOY  
SIGNAL PIN MATERIAL: COPPER ALLOY
- 3. PLATING:  
51939-131; 51939-131ILF; 51939-131GLF SEE PRINT 10064183
- 4. MANUFACTURER'S NAME, P/N, AND DATE CODE TO APPEAR ON THIS SURFACE.
- 5. PRODUCT SPECIFICATION GS-12-149.  
APPLICATION SPECIFICATION BUS-20-067.
- 6. PACKAGED IN TRAYS.

PCB NOTES:

- 7. ALL HOLE DIAMETERS ARE FINISHED HOLE SIZE.
- 8. MOUNTING HOLES, WHERE APPLICABLE, ARE UNPLATED.
- 9.  $\varnothing .0453 \pm .0010$  [1.151  $\pm$  0.025] DRILLED HOLES PLATED WITH .0003 [0.008] MIN SnPb OVER .001 [0.03] TO .003 [0.08] Cu PLATING TO ACHIEVE  $\varnothing .040 \pm .003$  [1.02  $\pm$  .07] HOLE.
- 10. "DIM XXX" TO BE DETERMINED BY THE CUSTOMER.
- 11. CONNECTOR KEEP-OUT ZONE.

mat'l code		SEE NOTE 2		tolerances unless otherwise specified		CUSTOMER		A FCI		www.fciconnect.com	
lir	ecr no.	dr	date	linear	.XX±.01/0.X±0.3	COPY		projection		title	
B					.XXX±.005/0.XX±0.13	INCH/MM		RIGHT ANGLE		4P + 12S + 3ACP	
				angles	.XXX±.002/0.XXX±0.051	1:1		PwrBlade		code	
				dr	0° ± 2°	A		product family		213	
				eng	T. BRUNGARD 07/21/04	size		PwrBlade		sheet	
				chr	M. GRAY 07/21/04	51939-131		code		4 of 4	
				appd	M. GRAY 07/21/04	A		sheet		4 of 4	
sheet index	revision sheet										

1 | 2

Pro/E

3 |

code code 22526

4